

Apr.13,2007

Temperature increase of main components: 主要部品温度上昇

Cosel.co.,ltd.

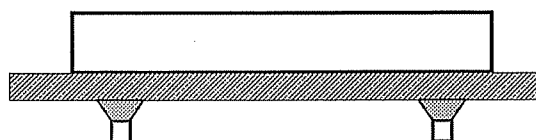
Model: ZUS324/ZUW324

## 1. Conditions

- (1) Input :DC 18 ~ 36 [V]  
 (2) Output :Rated output  
 (3) Mounting method :Shown as Fig.1.1

## 2. Result

No.	Parts name	Symbol No.	Increase ( $\Delta T$ )					Rated temp. [°C]	Reference
			[deg]						
			5V	12V	15V	$\pm 12V$	$\pm 15V$		
1	Transformer	T11	44	46	36	38	38	120	
2	Switching Transistor	TR11	45	41	40	41	42	150	Junction Temp.
3	Rectified Diode(Output)	D51	45	43	31	34	38	150	Junction Temp.
4	Photocoupler	PC11	38	36	34	34	34	125	Junction Temp.
5	Output Choke	L51	37	33	27	29	33	105	
6	Output Capacitor	C54	33	32	26	—	—	125	
7	Output Capacitor	C55,C56	—	—	—	27	30	125	
8									
9									
10									
11									
12									
13									
14									
15									
16									
17									
18									
19									
20									



(Side view)

Fig.1.1 Mounting method  
(Normal position)