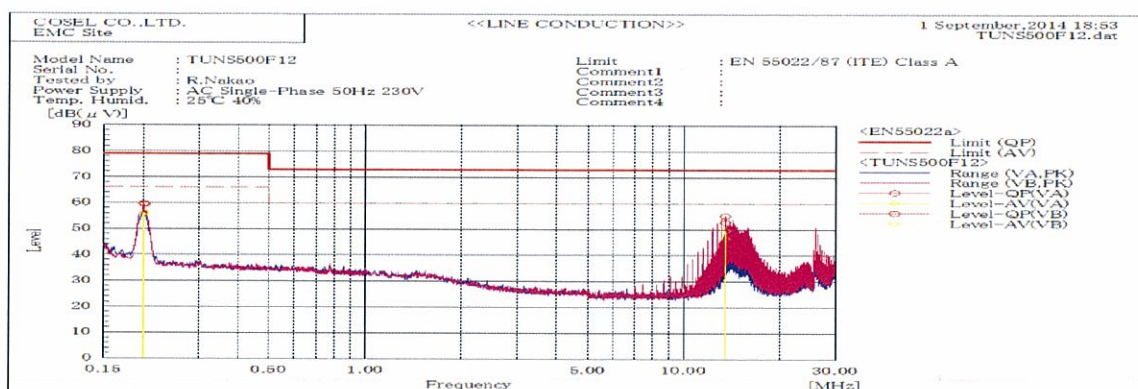
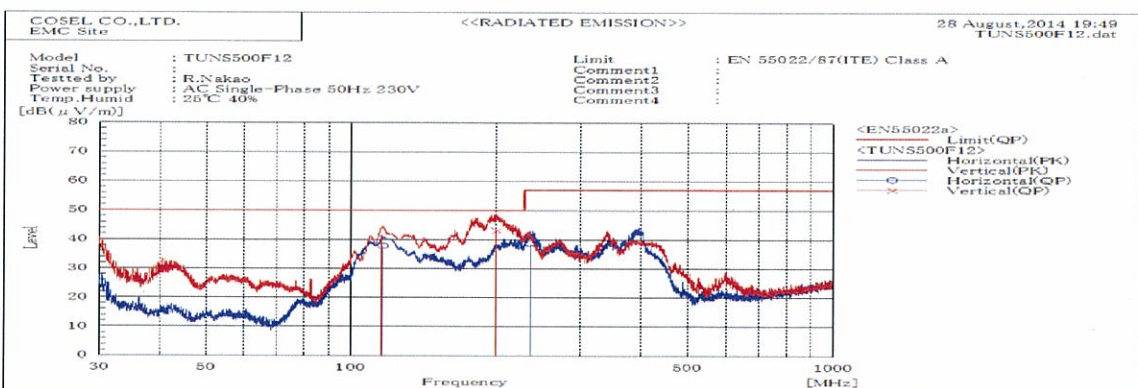




DATA SHEET		Date	14-Sep-14
Model	TUNS500F12	Temp.	25 degreeC
Test	EMI	Humid.	40 %RH
	Line conduction & Radiated emission	Tested by	R.Nakao



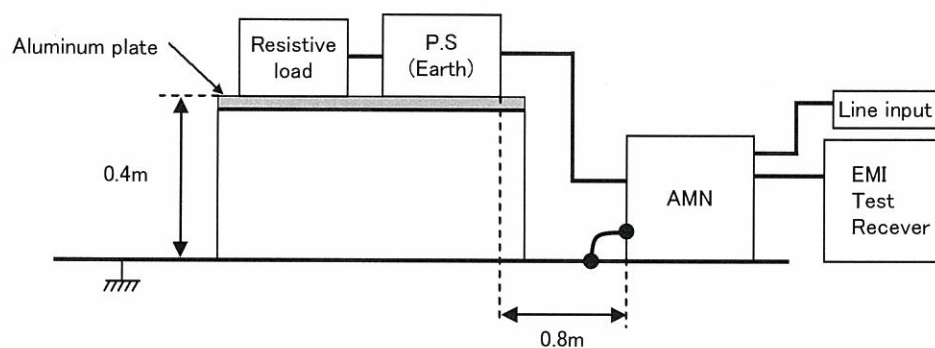
Frequency MHz	Harm	Line Phase	Reading dB(uV)		Factor dB	Level dB(uV)		Limit dB(uV)		Margin dB		Pass/ Fail	Remark
			QP	AV		QP	AV	QP	AV	QP	AV		
0.20205		VA	39.3	36.0	20.2	59.5	56.2	79.0	66.0	19.5	9.8	Pass	
0.20064		VB	39.4	35.9	20.2	59.6	56.1	79.0	66.0	19.4	9.9	Pass	
13.48245		VA	31.9	25.8	20.8	52.7	46.6	73.0	60.0	20.3	13.4	Pass	
13.48335		VB	34.5	28.9	20.7	55.2	49.6	73.0	60.0	17.8	10.4	Pass	



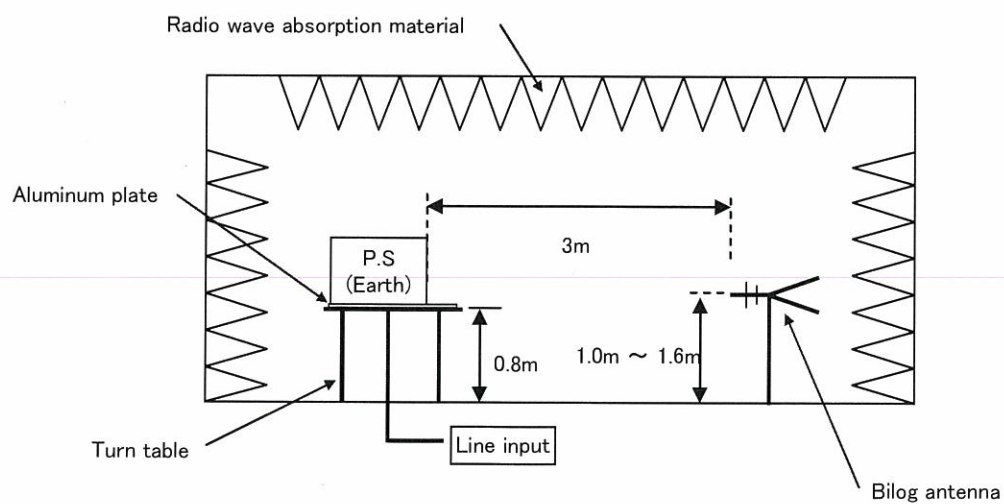
Frequency MHz	Polarization	Stability	Reading dB(uV)		Space Loss dB	Level dB(mW)	Limit dB(mW)	Margin dB	Pass/Fail	Height cm	Angle deg	Remark
			QP	AV		QP	QP	QP				
115.69	V	Stable	59.0	-17.8		41.2	50.0	8.8	Pass	104	98	
116.251	H	Stable	57.1	-19.4		37.7	50.0	12.3	Pass	153	330	
200.433	V	Stable	58.8	-15.7		43.1	50.0	6.9	Pass	104	349	
235.74	H	Stable	57.6	-19.0		38.6	57.0	18.4	Pass	106	78	

DATA SHEET		Date	14-Sep-14
Model	Circuit used for measurement	Temp.	25 degreeC
Test	EMI Line conduction & Radiated emission	Humid.	40 %RH
		Tested by	R.Nakao

1. Line conduction



2. Radiated emission

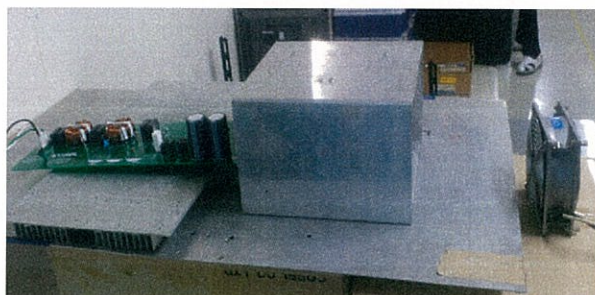


Test: EMI

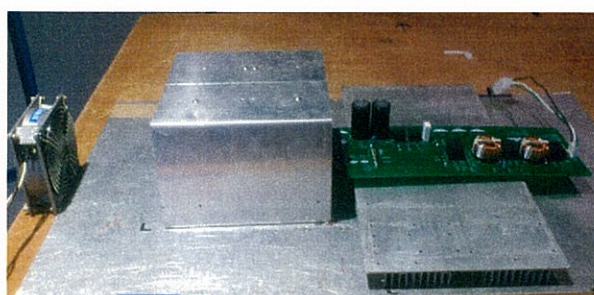
Model Name: TUNS500F Series

○ Photographs of Test Set-Up

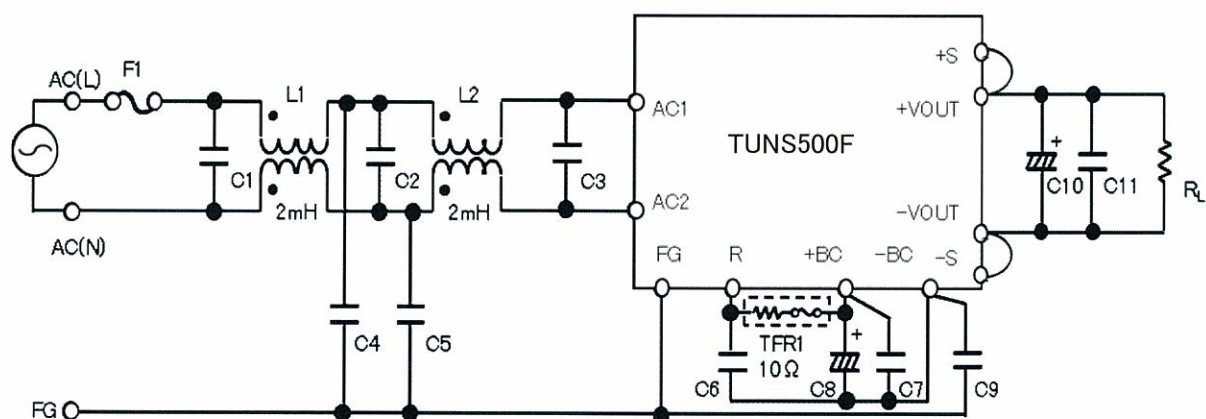
LINE CONDUCTION



RADIATED EMISSION



○ Test circuit



- L1,L2 : SC-15-200(NEC TOKIN)
- C1,C2 : $0.68 \mu\text{F}$ 310V Film Capacitor $\times 2$
- C3 : $1.0 \mu\text{F}$ 310V Film Capacitor $\times 2$
- C4,C5,C9 : 2200pF Ceramic Capacitor
- C6,C7 : $0.68 \mu\text{F}$ 450V Film Capacitor $\times 2$
- C8 : $390 \mu\text{F}$ 450V Electrolytic Capacitor $\times 2$
- C10 : TUNS500F12 $2200 \mu\text{F}$ 25V Electrolytic Capacitor
- TUNS500F28 $1000 \mu\text{F}$ 50V Electrolytic Capacitor
- TUNS500F48 $470 \mu\text{F}$ 63V Electrolytic Capacitor

- C11 : TUNS500F12 $10 \mu\text{F}$ Ceramic Capacitor
- TUNS500F28 $4.7 \mu\text{F}$ Ceramic Capacitor
- TUNS500F48 $2.2 \mu\text{F}$ Ceramic Capacitor