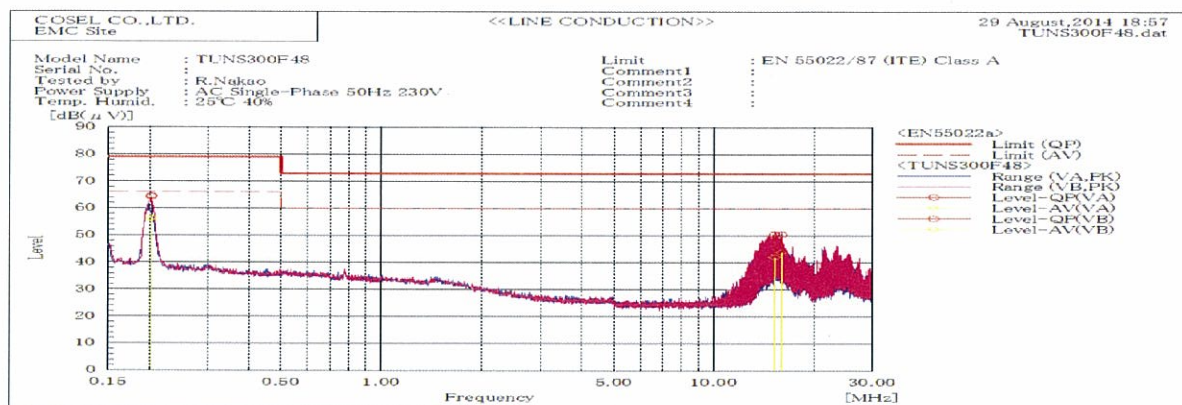
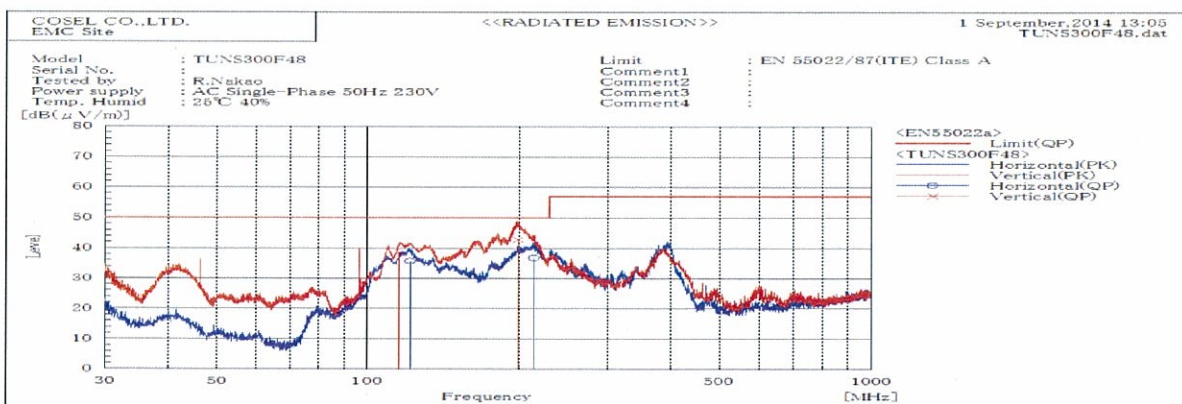


DATA SHEET		Date	14-Sep-14
Model	TUNS300F48	Temp.	25 degreeC
Test	EMI	Humid.	40 %RH
	Line conduction & Radiated emission	Tested by	R.Nakao



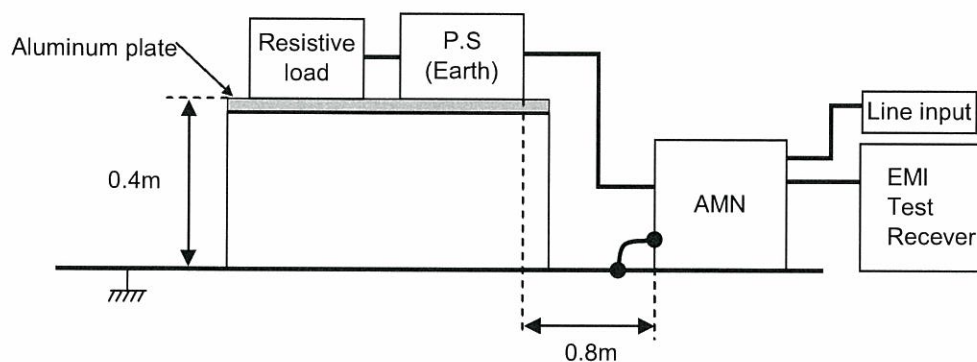
Frequency MHz	Harm	Line Phase	Reading dB(μV)		Factor dB	Level dB(μV)		Limit dB(μV)		Margin dB		Pass/ Fail	Remark
			QP	AV		QP	AV	QP	AV	QP	AV		
0.20108		VA	44.1	36.1	20.2	64.3	56.3	79.0	66.0	14.7	9.7	Pass	
0.20149		VB	44.4	36.2	20.2	64.6	56.4	79.0	66.0	14.4	9.6	Pass	
15.2033		VB	29.6	21.2	21.0	50.6	42.2	73.0	60.0	22.4	17.8	Pass	
15.9103		VA	29.5	22.9	21.1	50.6	44.0	73.0	60.0	22.4	16.0	Pass	



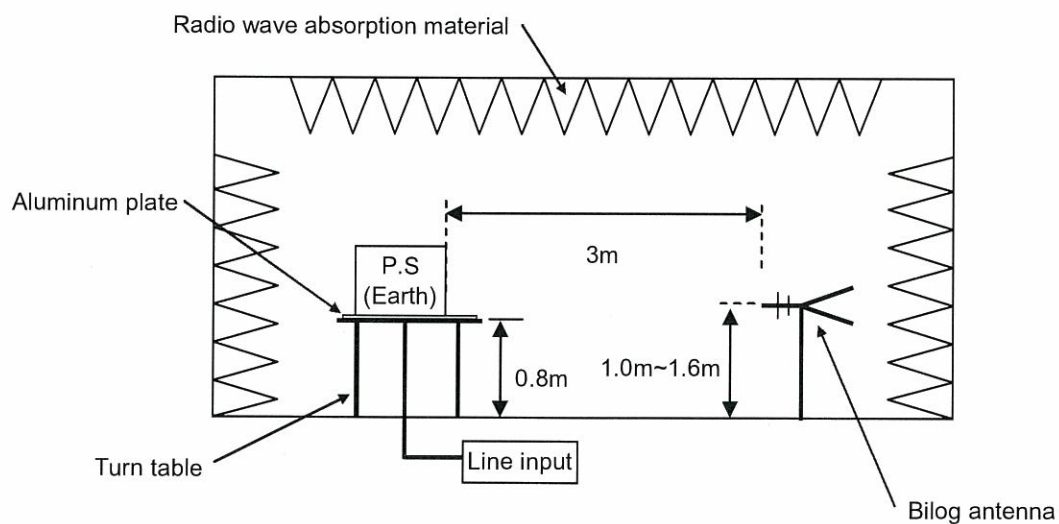
Frequency MHz	Polarization	Stability	Reading dB(μV)		Space Loss dB	Level dB(mW)		Limit dB(mW)	Margin dB	Pass/Fail	Height cm	Angle deg	Remark
			QP	AV		QP	AV						
115.529	V	Stable	56.4	-17.9		38.5		50.0	11.5	Pass	109	101	
121.26	H	Stable	55.0	-19.3		35.7		50.0	14.3	Pass	155	337	
198.806	V	Stable	58.5	-15.7		42.8		50.0	7.2	Pass	102	0	
213.806	H	Stable	57.8	-21.0		36.8		50.0	13.2	Pass	157	80	

DATA SHEET		Date	14-Sep-14
Model	Circuit used for measurement	Temp.	25 degreeC
Test	EMI Line conduction & Radiated emission	Humid.	40 %RH
		Tested by	R.Nakao

## 1. Line conduction



## 2. Radiated emission





Test: EMI

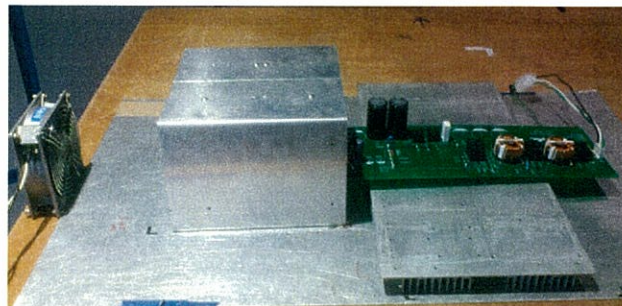
Model Name: TUNS300F Series

## ○ Photographs of Test Set-Up

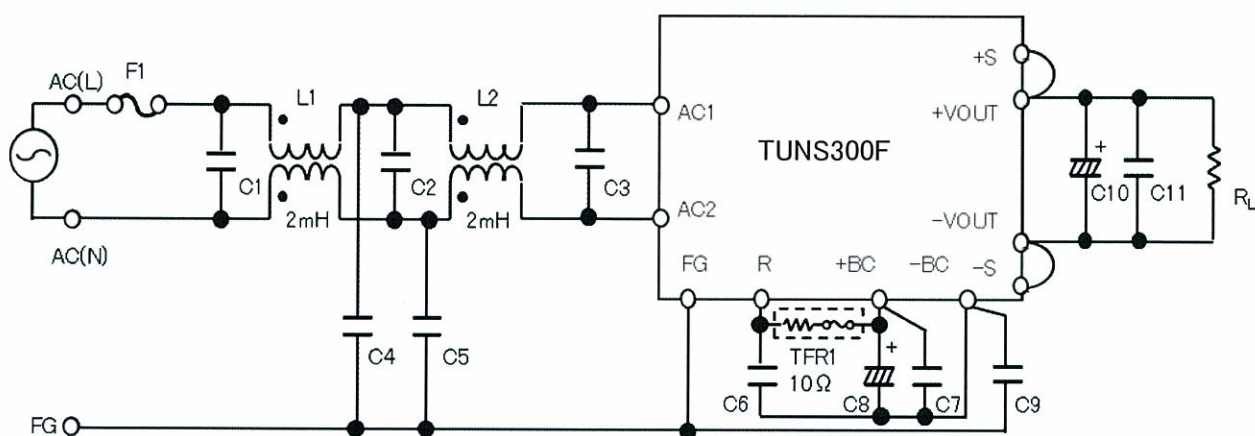
LINE CONDUCTION



RADIATED EMISSION



## ○ Test circuit



- L1,L2 : SC-15-200(NEC TOKIN)
- C1,C2 : 0.68  $\mu$ F 310V Film Capacitor  $\times$  2
- C3 : 1.0  $\mu$ F 310V Film Capacitor  $\times$  2
- C4,C5,C9 : 2200pF Ceramic Capacitor
- C6,C7 : 0.68  $\mu$ F 450V Film Capacitor  $\times$  2
- C8 : 470  $\mu$ F 420V Electrolytic Capacitor
- C10 : TUNS300F12 2200  $\mu$ F 25V Electrolytic Capacitor
- TUNS300F28 1000  $\mu$ F 50V Electrolytic Capacitor
- TUNS300F48 470  $\mu$ F 63V Electrolytic Capacitor

- C11 : TUNS300F12 10  $\mu$ F Ceramic Capacitor
- TUNS300F28 4.7  $\mu$ F Ceramic Capacitor
- TUNS300F48 2.2  $\mu$ F Ceramic Capacitor