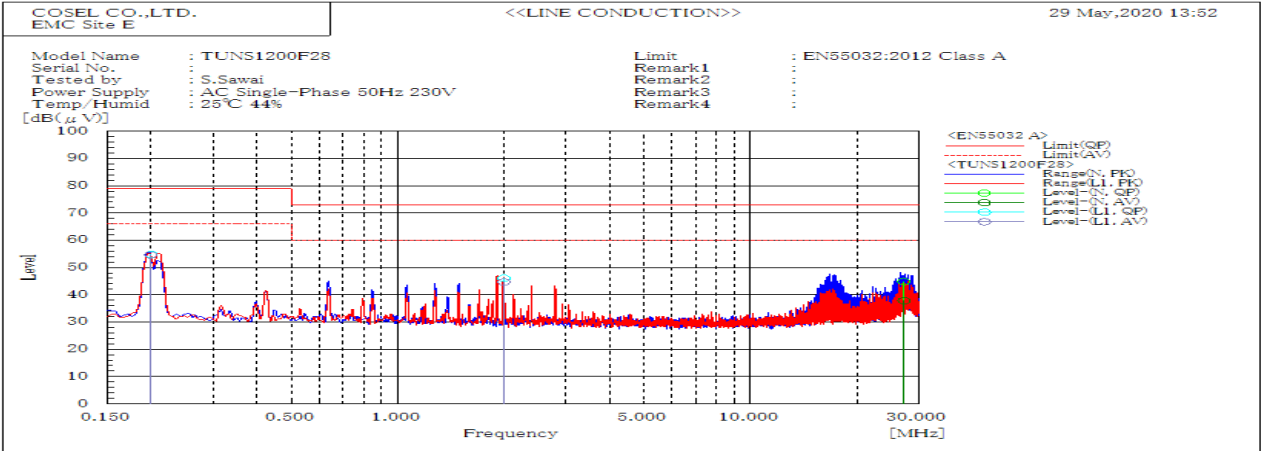
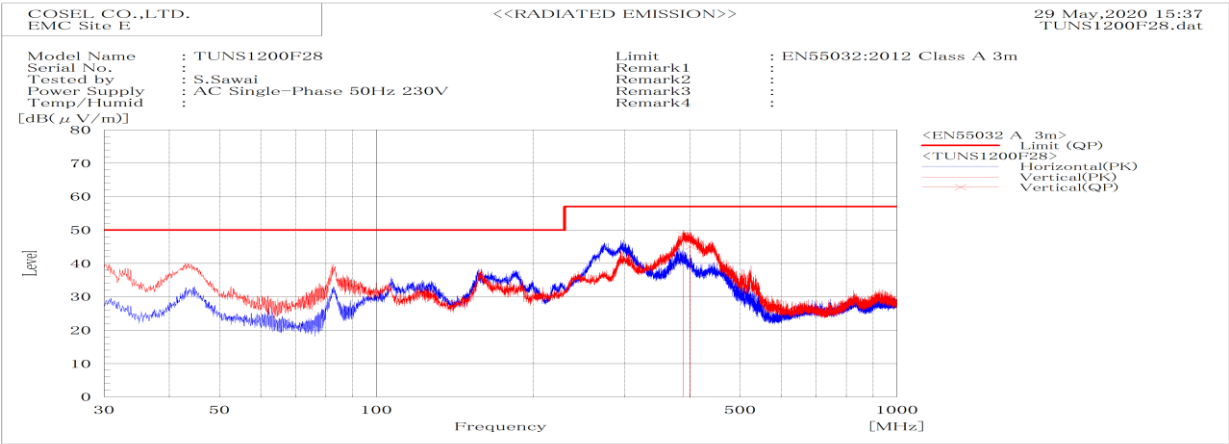


DATA SHEET		Date	17-Jul-20
Model	TUNS1200F28	Temp.	25 degreeC
Test	EMI Line conduction & Radiated emission	Humid.	40 %RH
		Tested by	S.Sawai



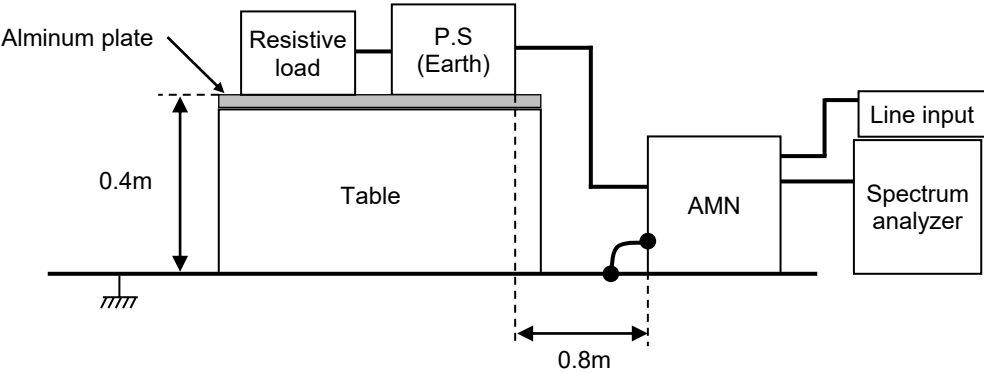
Frequency	Line	Level		Limit		Margin		Pass/Fail	Remark
MHz		dB(μV)		dB(μV)		dB			
		QP	AV	QP	AV	QP	AV		
0.2	L1	54.8	54.6	79	66	24.2	11.4	Pass	
0.2	L1	54.8	54.6	79	66	24.2	11.4	Pass	
2	L1	46	44.7	73	60	27	15.3	Pass	
27.196	N	44.9	37.8	73	60	28.1	22.2	Pass	



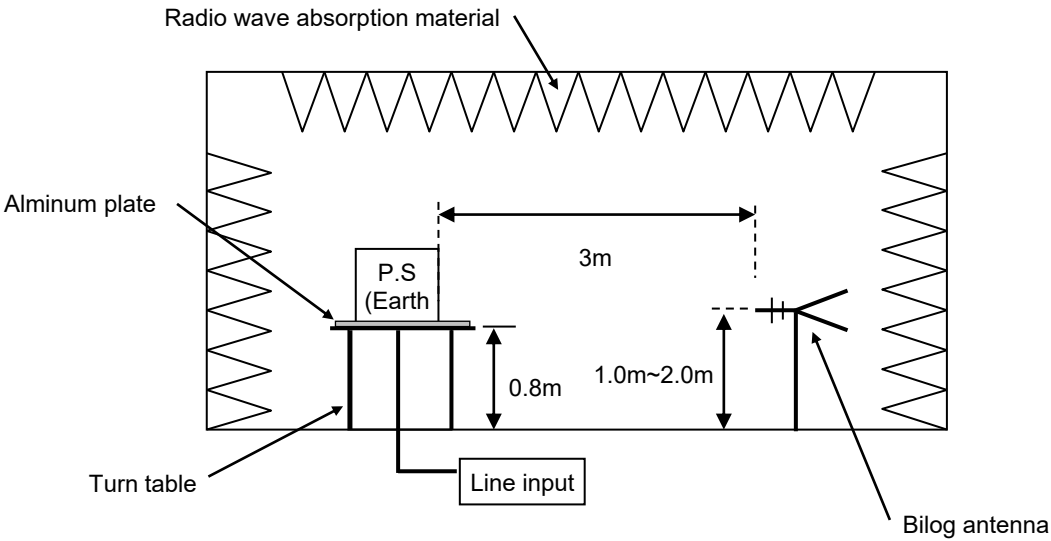
Frequency MHz	Polarization	Stability	Level	Limit	Margin	Pass/Fail	Height cm	Angle deg	Remark
			dB(μV/m) QP	dB(μV/m) QP	dB QP				
387.974	V	Stable	48.5	57	8.5	Pass	126.9	253.6	
400.311	V	Stable	45.1	57	11.9	Pass	148.4	94.1	

DATA SHEET		Date	17-Jul-20
Model	Circuit used for measurement	Temp.	25 degreeC
Test	EMI Line conduction & Radiated emission	Humid.	40 %RH
		Tested by	S.Sawai

1. Line conduction



2. Radiated emission

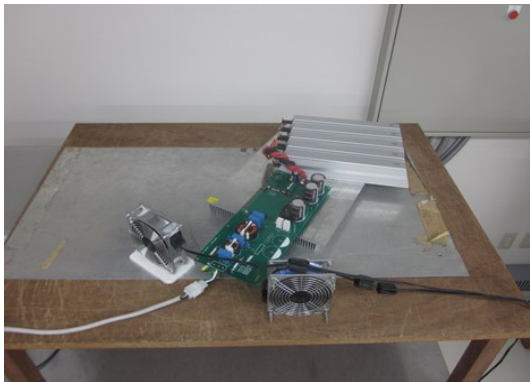


Conditions

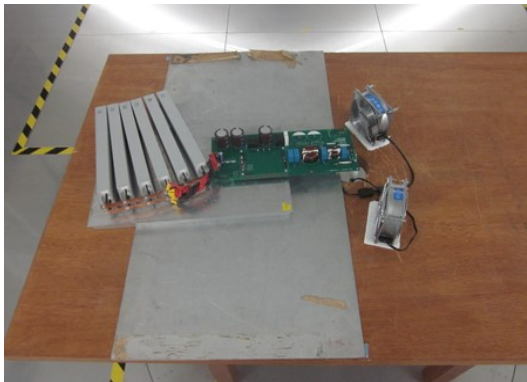
Test : EMI
Model Name: TUNS1200F

○Photographs of Test Set-Up

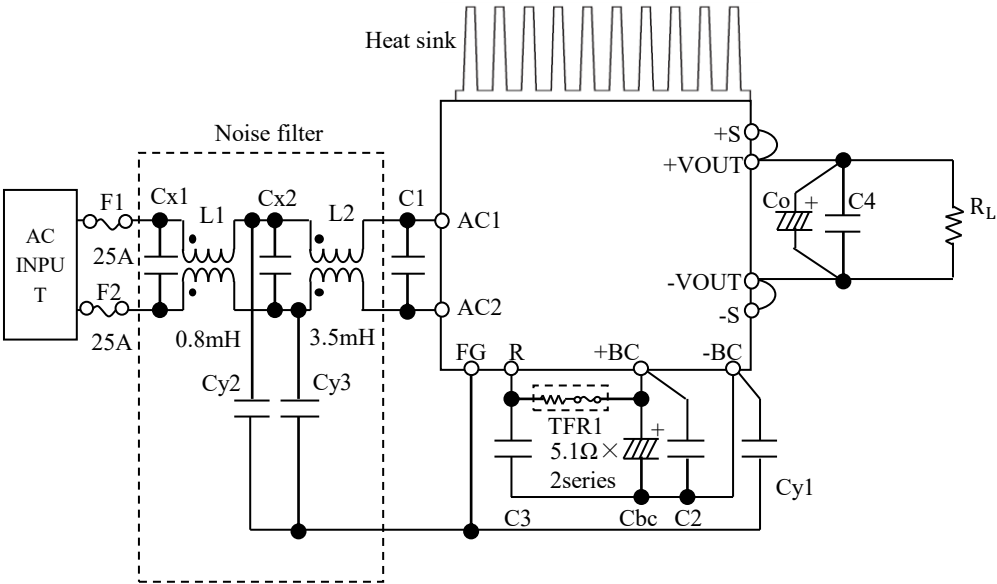
LINE CONDUCTION



RADIATED EMISSION



○Testing circuitry



- L1 : SCR25-200-1R7A008JH
- L2 : SC15-E350H
- Cx1,Cx2 : 1.5uF 310V Film Capacitor
- Cy1 : 2200pF 400V
- Cy2,Cy3 : 1500pF 400V
- C1 : 1.5uF 310V Film Capacitor × 2parallel
- C2,C3 : 1.0uF 630V Film Capacitor × 2parallel
- C4 : 1.0uF Ceramic Capacitor
- Cbc : 470uF 450V Electrolytic Capacitor × 3parallel
- Co : TUNS1200F12 2200uF 25V Electrolytic Capacitor
TUNS1200F28 1000uF 50V Electrolytic Capacitor
TUNS1200F48 470uF 63V Electrolytic Capacitor

Fig.1 Testing circuitry