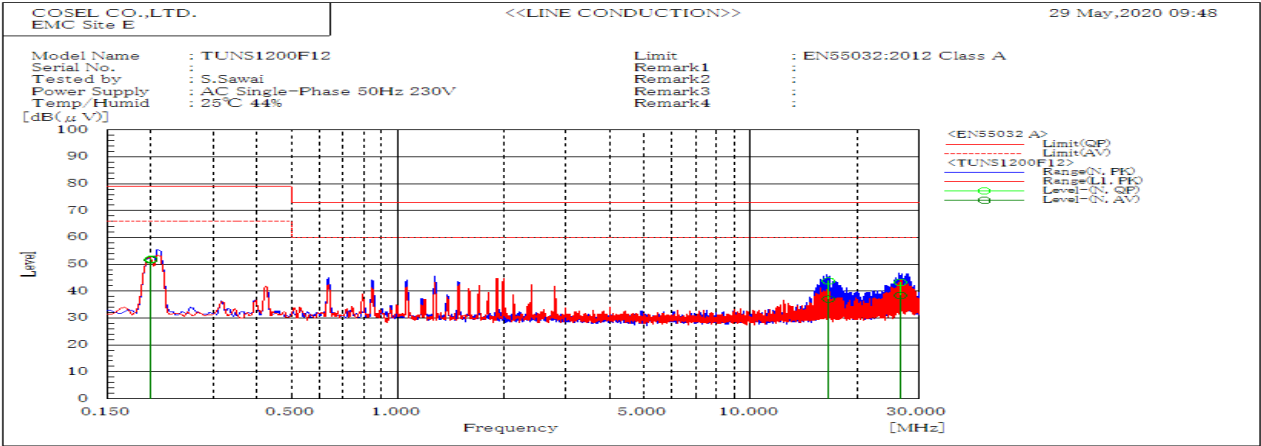
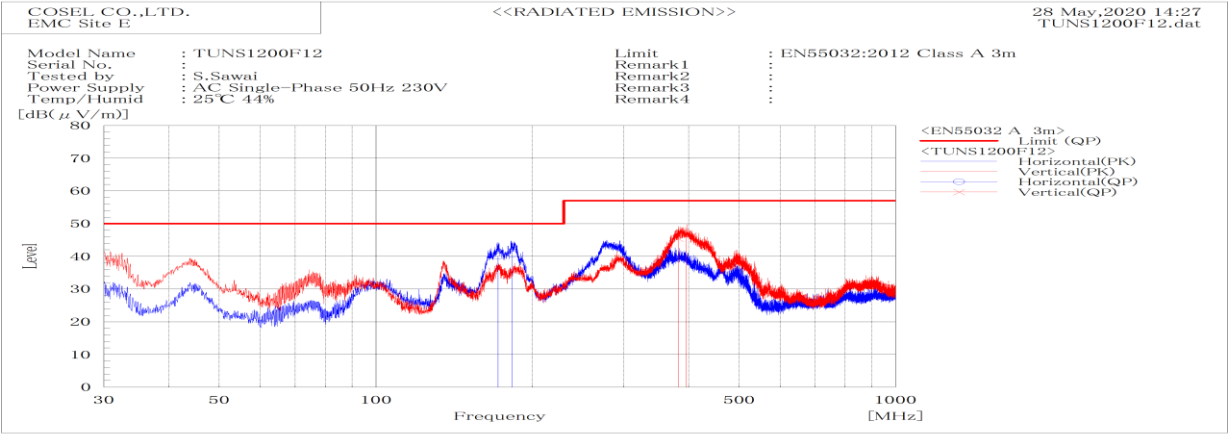


DATA SHEET		Date	17-Jul-20
Model	TUNS1200F12	Temp.	25 degreeC
Test	EMI Line conduction & Radiated emission	Humid.	40 %RH
		Tested by	S.Sawai



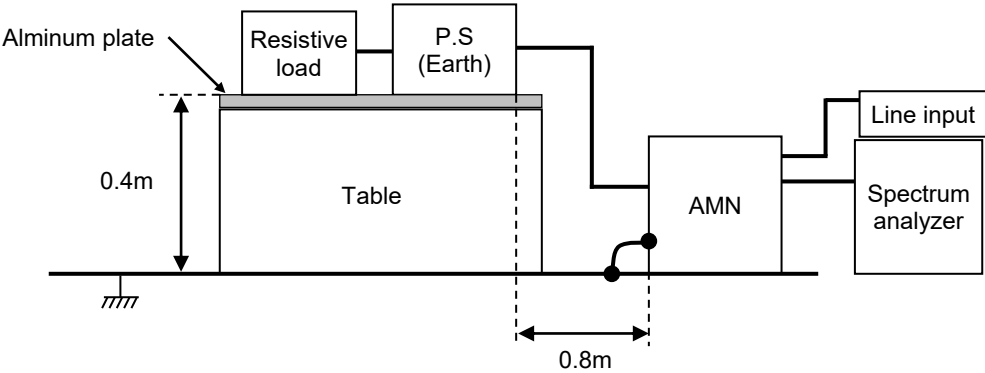
Frequency MHz	Line	Level dB(μV)		Limit dB(μV)		Margin dB		Pass/Fail	Remark
		QP	AV	QP	AV	QP	AV		
0.2	N	51.9	51.6	79	66	27.1	14.4	Pass	
0.2	N	51.9	51.6	79	66	27.1	14.4	Pass	
16.628	N	43.8	37.1	73	60	29.2	22.9	Pass	
26.581	N	43.3	38.4	73	60	29.7	21.6	Pass	



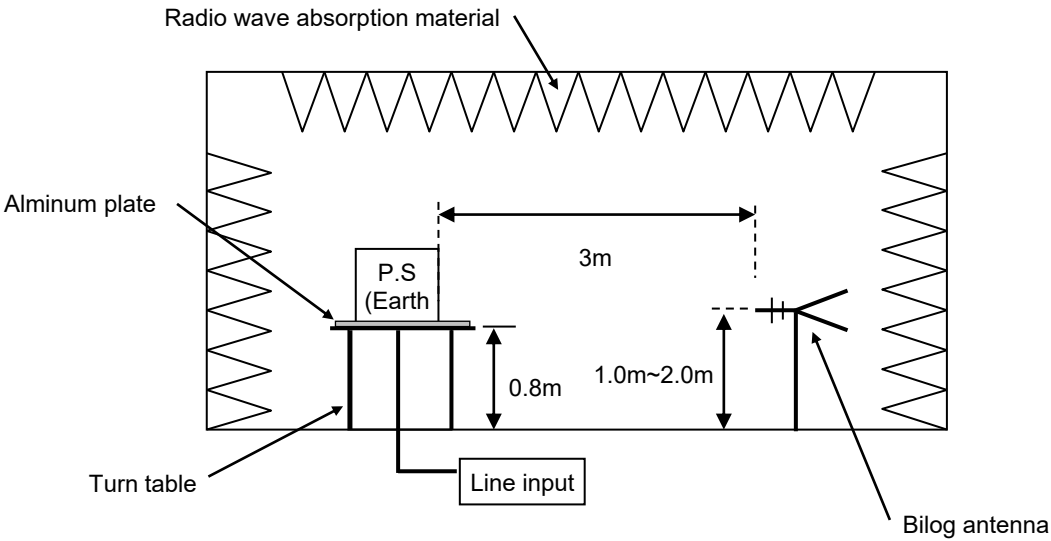
Frequency MHz	Polarization	Stability	Level dB(μV/m)		Limit dB(μV/m)	Margin dB	Pass/Fail	Height cm	Angle deg	Remark
			QP	QP						
171.909	H	Stable	40.1	50	9.9	Pass	188.5	31.9		
182.876	H	Stable	40.7	50	9.3	Pass	200	341.1		
395.81	V	Stable	46.6	57	10.4	Pass	123.5	251.7		
382.116	V	Stable	45.4	57	11.6	Pass	200	101.2		

DATA SHEET		Date	17-Jul-20
Model	Circuit used for measurement	Temp.	25 degreeC
Test	EMI Line conduction & Radiated emission	Humid.	40 %RH
		Tested by	S.Sawai

1. Line conduction



2. Radiated emission



Conditions

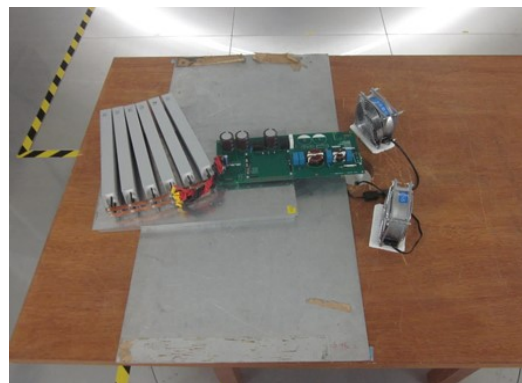
Test : EMI
Model Name: TUNS1200F

Photographs of Test Set-Up

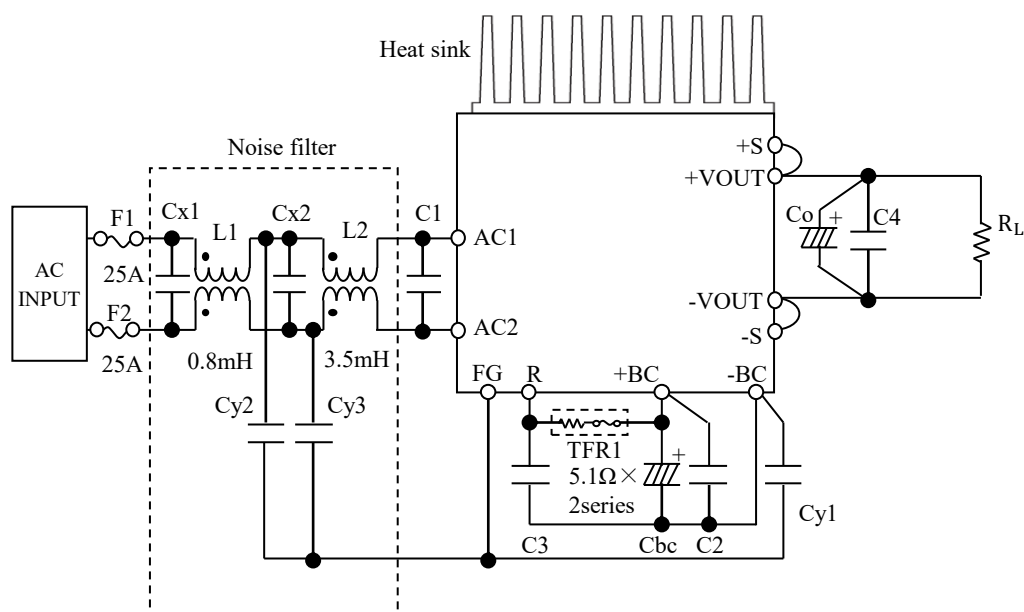
LINE CONDUCTION



RADIATED EMISSION



Testing circuitry



- L1 : SCR25-200-1R7A008JH
- L2 : SC15-E350H
- Cx1,Cx2 : 1.5uF 310V Film Capacitor
- Cy1 : 2200pF 400V
- Cy2,Cy3 : 1500pF 400V
- C1 : 1.5uF 310V Film Capacitor × 2parallel
- C2,C3 : 1.0uF 630V Film Capacitor × 2parallel
- C4 : 1.0uF Ceramic Capacitor
- Cbc : 470uF 450V Electrolytic Capacitor × 3parallel
- Co : TUNS1200F12 2200uF 25V Electrolytic Capacitor
TUNS1200F28 1000uF 50V Electrolytic Capacitor
TUNS1200F48 470uF 63V Electrolytic Capacitor

Fig.1 Testing circuitry