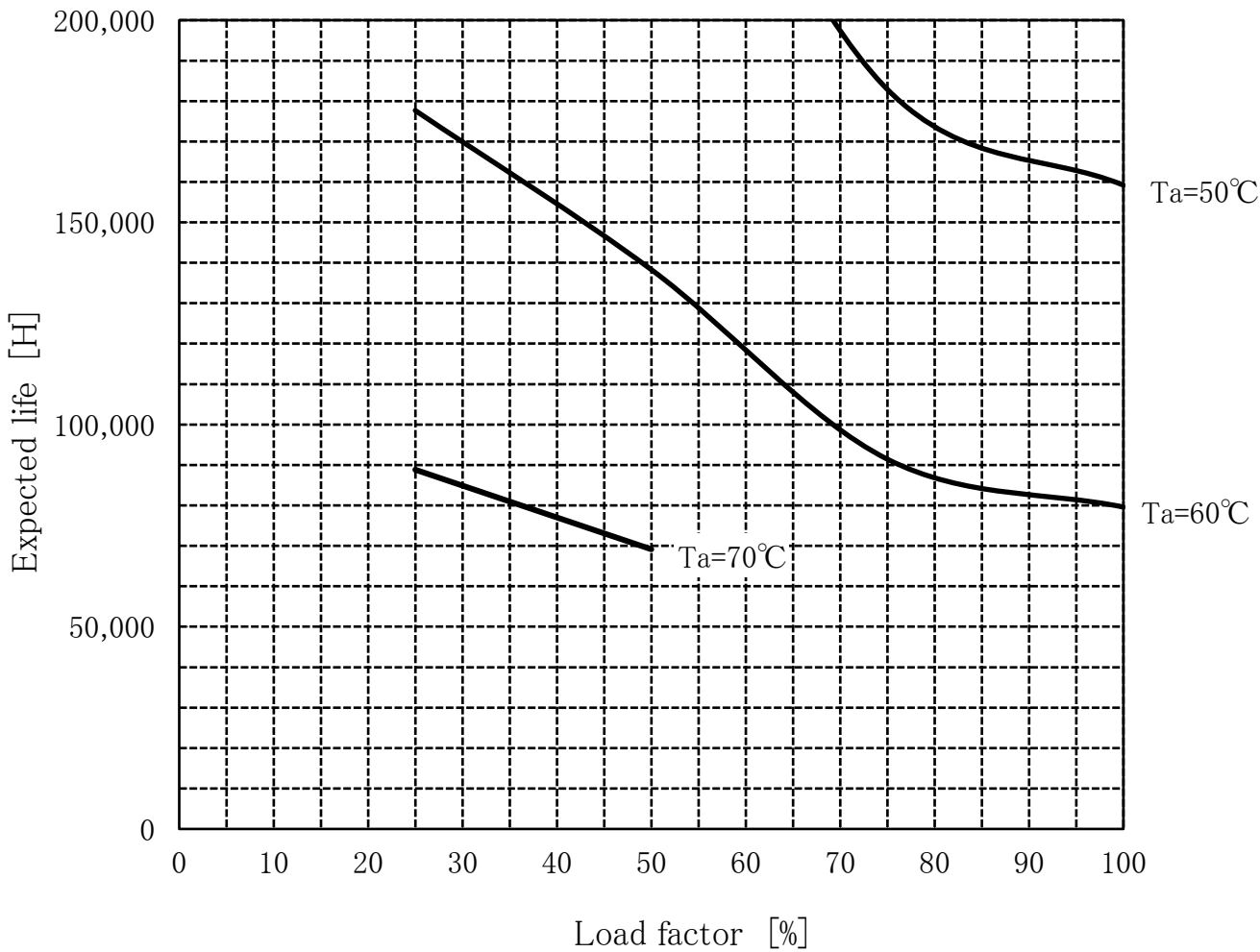


TECS10F-15 Expected Life : 推定寿命



- Above expected life time is calculated according our calculation standard.  
上記推定寿命は、当社算出基準に従い算出したものです。
- Over the area of 100,000 hours, the degradation of sealing rubber, etc., is not included in the calculation.  
10万時間以上の領域では、封ロゴムの劣化等の影響は、計算式には含まれていません。

Conditions

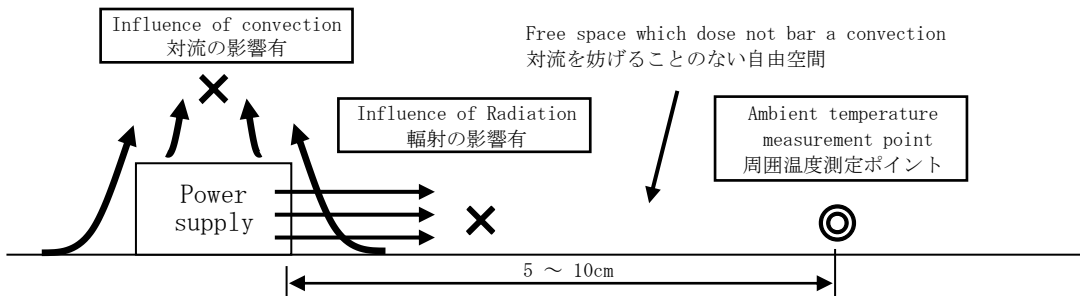
(1) Input voltage 90 ~ 264VAC 60Hz

(2) Output voltage  
Output current

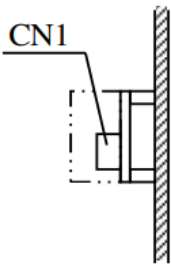
| DC<br>OUTPUT | Load factor |       |       |       |
|--------------|-------------|-------|-------|-------|
|              | 100%        | 75%   | 50%   | 25%   |
| 15V          | 0.70A       | 0.53A | 0.35A | 0.18A |

(3) Cooling method Convection

(4) Mounting method Refer below



With the ambient temperature of graph, it measures in the environment of a figure.  
グラフの周囲温度とは、図の環境で測定したものです。



Mounting method (C)