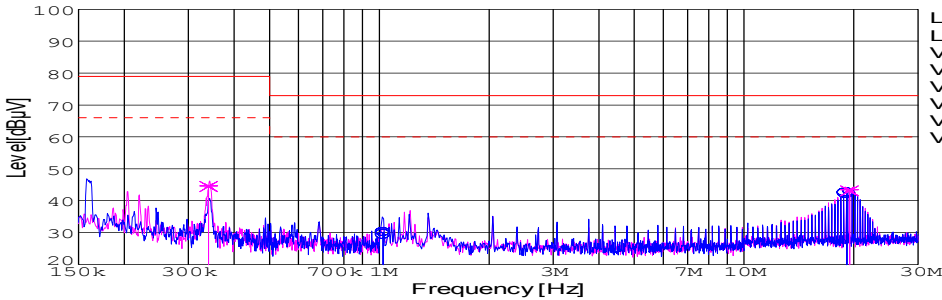
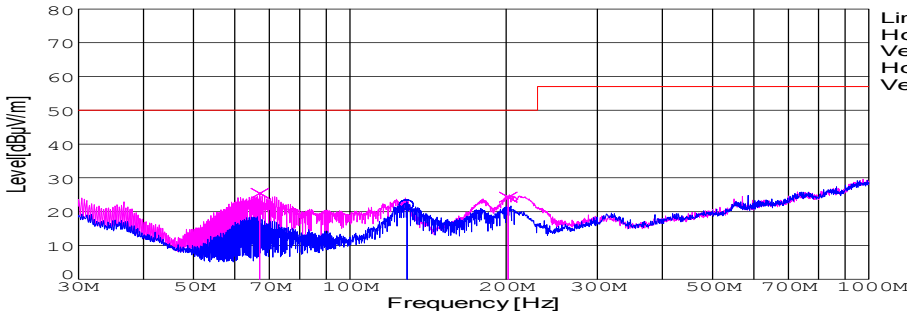


DATA SHEET							Date	18-Feb-05		
Model	SUW60515						Temp.	25 degreeC		
Test	EMI Line conduction & Radiated emission						Humid.	45 %RH		
							Tested by	Y.Hirose		
LINE CONDUCTION										
Model Name		SUW60515			Temp.		25			
Model No.					Humi.		45			
Serial No.					Date		2005/2/18 16:21			
Points		4			Test Equip.		R3132,ESPC			
Detector		PEAK/QP/Ave.			Comment		Y.Hirose			
Line Mode		VA/VB			+15V0.2A					
Power Supply		DC 5V			-15V0.2A					
Limit1: [EN 55022]		Class A(QP)								
Limit2: [EN 55022]		Class A(Ave.)								
							Limit1(QP)		—	
							Limit2(Ave.)		- - -	
							VA(PEAK)		—	
							VB(PEAK)		- - -	
							VA(QP)		o	
							VA(Ave.)		x	
							VB(QP)		o	
							VB(Ave.)		x	
							DC 5V			
							+15V0.2A			
							-15V0.2A			
Frequency [MHz]	Meter Reading (Ave.) [dBuV]	Meter Reading (QP) [dBuV]	Factor [dB]	Level(Ave.) [dBuV]	Level(QP) [dBuV]	Line	Limit(Ave.) [dBuV]	Limit(QP) [dBuV]	Margin(Ave.) [dB]	Margin(QP) [dB]
1.0245	19.5	20.2	9.9	29.4	30.1	VA	60	73	30.6	42.9
19.0993	32.3	32	10.3	42.6	42.3	VA	60	73	17.4	30.7
0.3406	34.8	34.7	9.8	44.6	44.5	VB	66	79	21.4	34.5
19.4431	33.2	32.8	10.3	43.5	43.1	VB	60	73	16.5	29.9
RADIATED EMISSION										
Model Name		SUW60515			Temp.		25			
Model No.					Humi.		45			
Serial No.					Date		2005/2/21 17:44			
Points		3			Test Equip.		R3132,ESPC			
Detector		PEAK/QP			Comment		Y.Hirose			
Polarization		Hori. & Vert.			+15V0.2A					
Power Supply		DC 5V			-15V0.2A					
Limit: [EN 55022]		Class A<3m>								
							Limit(QP)		—	
							Horizontal(PEAK)		—	
							Vertical(PEAK)		- - -	
							Horizontal(QP)		o	
							Vertical(QP)		x	
							DC 5V			
							+15V0.2A			
							-15V0.2A			
Frequency [MHz]	MeterReading (QP) [dBuV]	Ant. Type	Antenna Factor [dB/m]	Cable & Preamp [dB]	Level(QP) [dBuV/m]	Angle [°]	Height [cm]	Polar.	Limit [dBuV/m]	Margin [dB]
128.953	42.2	BL	11.2	-31.6	21.8	220	156	Hori.	50	28.2
67.058	52.4	BL	5	-32	25.4	115	121	Vert.	50	24.6
201.867	47.1	BL	8.5	-31.3	24.3	240	127	Vert.	50	25.7

COSEL

Conditions

Test : EMI
Model Name : SUS/SUW 605□□

○Photographs of Test Set-Up

LINE CONDUCTION



RADIATED EMISSION



○Testing circuitry

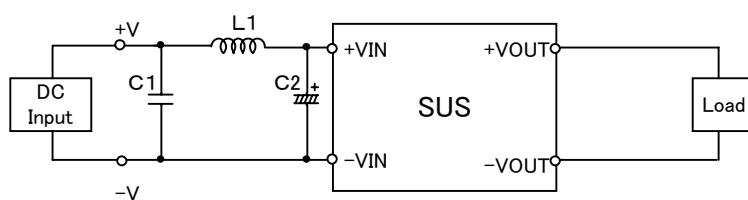


Fig.1 Testing circuitry 1

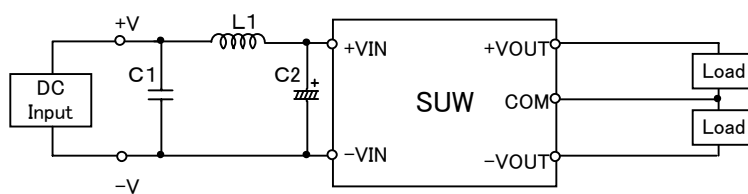


Fig.2 Testing circuitry 2

L1 :	0.5 μ H	CY3H-R50	(KORIN ELECTRONICS)
C1 :	25V 2.2 μ F	C3216JB1E225M	(TDK)
C2 :	16V 470 μ F	LXZ16VB470(M)	(NIPPON CHEMI-COM)