

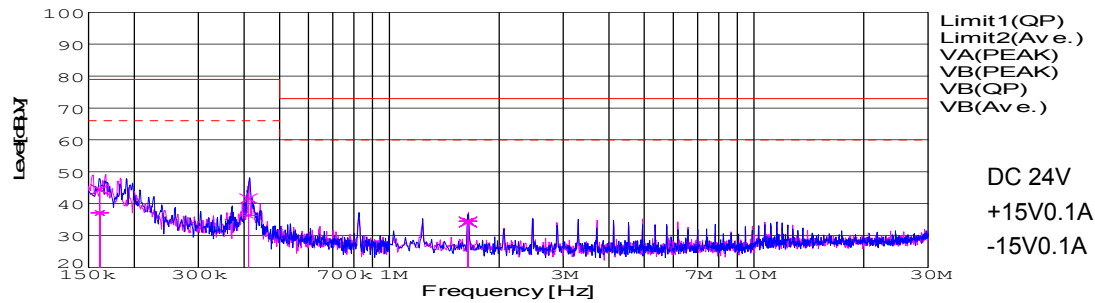
## DATA SHEET

Date		16-May-05	
Model	SUW32415	Temp.	25 degreeC
Test	EMI Line conduction & Radiated emission	Humid.	45 %RH
		Tested by	T.Ohara

### LINE CONDUCTION

Model Name : SUW32415  
 Model No. :  
 Serial No. :  
 Points : 3  
 Detector : PEAK/QP/Ave.  
 Line Mode : VB  
 Power Supply : DC 24V  
 Limit1: [EN 55022] Class A(QP)  
 Limit2: [EN 55022] Class A(Ave.)

Temp. : 25  
 Humi. : 45  
 Date : 2005/5/16 16:11  
 Test Equip. : R3132,ESPC  
 Load Line : 10mm  
 Comment : T.Ohara

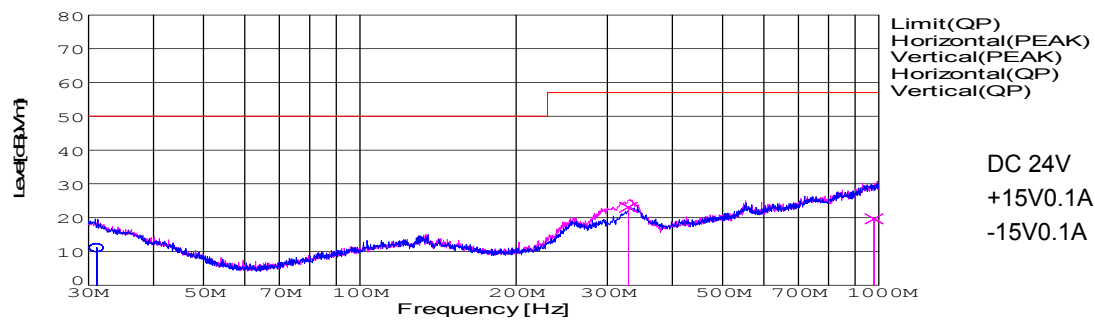


Frequency [MHz]	Meter Reading (Ave.) [dBuV]	Meter Reading (QP) [dBuV]	Factor [dB]	Level(Ave.) [dBuV]	Level(QP) [dBuV]	Line	Limit(Ave.) [dBuV]	Limit(QP) [dBuV]	Margin(Ave.) [dB]	Margin(QP) [dB]
0.1608	27.3	34.6	9.8	37.1	44.4	VB	66	79	28.9	34.6
0.4113	26.4	31.7	9.9	36.3	41.6	VB	66	79	29.7	37.4
1.6441	24.6	24.4	9.9	34.5	34.3	VB	60	73	25.5	38.7

### RADIATED EMISSION

Model Name : SUW32415  
 Model No. :  
 Serial No. :  
 Points : 3  
 Detector : PEAK/QP  
 Polarization : Hori. & Vert.  
 Power Supply : DC 24V  
 Limit: [EN 55022] Class A<3m>

Temp. : 25  
 Humi. : 45  
 Date : 2005/5/16 16:58  
 Test Equip. : R3132,ESPC  
 Load Line : 10mm  
 Comment :



Frequency [MHz]	Meter Reading (QP) [dBuV]	Ant. Type	Antenna Factor [dB/m]	Cable & Preamp [dB]	Level(QP) [dBuV/m]	Angle [°]	Height [cm]	Polar.	Limit [dBuV/m]	Margin [dB]
31.124	25.7	BL	17.6	-32.3	11	310	130	Hori.	50	39
978.782	23.7	BL	25.2	-29.3	19.6	213	152	Vert.	57	37.4
329.153	40.1	BL	13.9	-30.9	23.1	202	112	Vert.	57	33.9



## Conditions

Test : EMI  
Model Name : SUS/SUW 324

○Photographs of Test Set-Up

### LINE CONDUCTION



### RADIATED EMISSION



○Testing circuitry

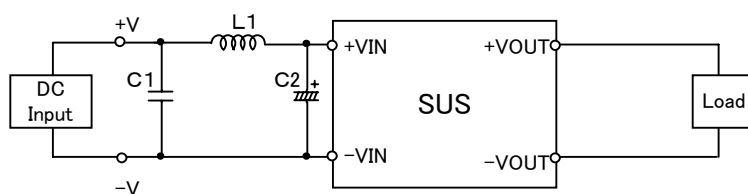


Fig.1 Testing circuitry 1

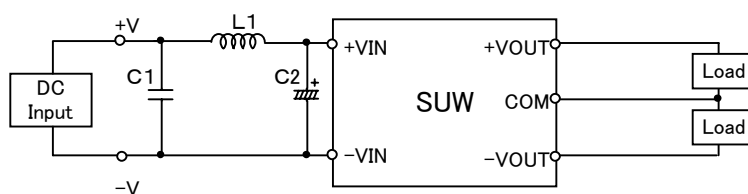


Fig.2 Testing circuitry 2

L1 :	10 $\mu$ H	CY3H-100	(KORIN ELECTRONICS)
C1 :	50V 0.47 $\mu$ F	C2012JB1H474K	(TDK)
C2 :	50V 47 $\mu$ F	UPW1H470M	(NICHICON)