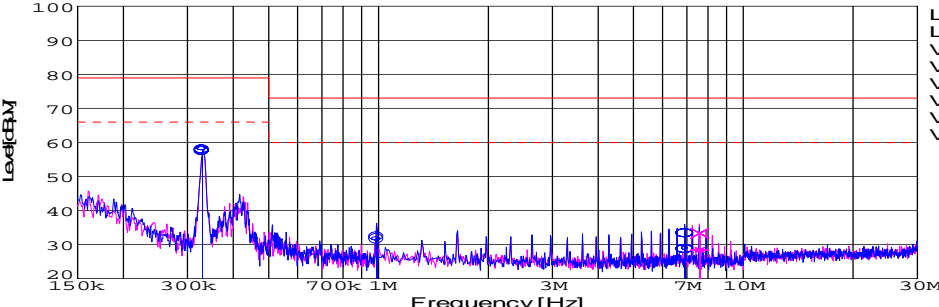
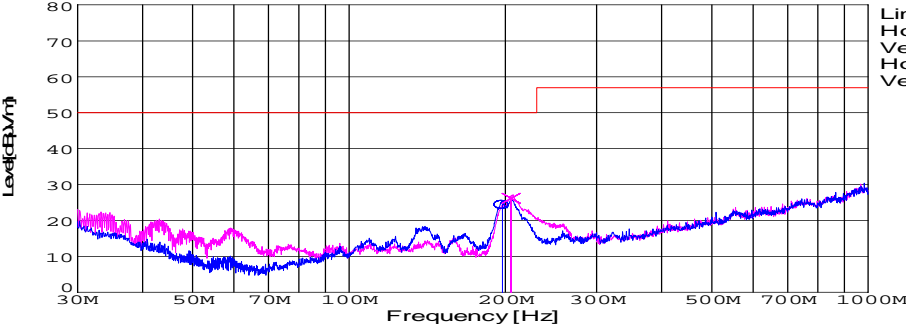


DATA SHEET							Date	10-Feb-09		
Model	SUTS61205						Temp.	25 degreeC		
Test	EMI Line conduction & Radiated emission						Humid.	45 %RH		
							Tested by	D.Joboji		
LINE CONDUCTION										
Model Name : SUTS61205			Power Supply : DC 12V							
Model No. :			Temp. : 25							
Serial No. :			Humi. : 45							
Points : 4			Date : 2009/2/10 15:25							
Detector : PEAK/QP/Ave.			Test Equip. : R3132,ESPC							
Line Mode : VA/VB			Comment :							
Limit1: [EN 55022] Class A(QP)										
Limit2: [EN 55022] Class A(Ave.)										
							Limit1(QP)		—	
							Limit2(Ave.)		- - -	
							VA(PEAK)		—	
							VB(PEAK)		—	
							VA(QP)		o	
							VA(Ave.)		o	
							VB(QP)		x	
							VB(Ave.)		x	
DC 12V										
Frequency [MHz]	Meter Reading (Ave.) [dBuV]	Meter Reading (QP) [dBuV]	Factor [dB]	Level(Ave.) [dBuV]	Level(QP) [dBuV]	Line	Limit(Ave.) [dBuV]	Limit(QP) [dBuV]	Margin(Ave.) [dB]	Margin(QP) [dB]
0.3296	48.2	47.7	9.8	58	57.5	VA	66	79	8	21.5
0.9918	21.7	22.3	9.9	31.6	32.2	VA	60	73	28.4	40.8
6.9302	18.7	23.3	10	28.7	33.3	VA	60	73	31.3	39.7
7.591	18.3	23.2	10.1	28.4	33.3	VB	60	73	31.6	39.7

RADIATED EMISSION										
Model Name : SUTS61205			Power Supply : DC 12V							
Model No. :			Temp. : 25							
Serial No. :			Humi. : 45							
Points : 2			Date : 2009/2/11 15:39							
Detector : PEAK/QP			Test Equip. : R3132,ESPC							
Polarization : Hori. & Vert.			Comment :							
Limit: [EN 55022] Class A<3m>										
							Limit(QP)		—	
							Horizontal(PEAK)		—	
							Vertical(PEAK)		—	
							Horizontal(QP)		o	
							Vertical(QP)		x	
DC 12V										
Frequency [MHz]	MeterReading (QP) [dBuV]	Ant. Type	Antenna Factor [dB/m]	Cable & Preamp [dB]	Level(QP) [dBuV/m]	Angle [°]	Height [cm]	Polar.	Limit [dBuV/m]	Margin [dB]
197.54	47.1	BL	8.5	-31.3	24.3	193	135	Hori.	50	25.7
205.223	48.8	BL	8.6	-31.3	26.1	27	121	Vert.	50	23.9

DATA SHEET

Model	Circuit used for measurement
Test	EMI Line conduction & Radiated emission

1. Line conduction



2. Radiated emission





Conditions

Test : EMI
Model Name : SUTS/SUTW 612□□

○Photographs of Test Set-Up

LINE CONDUCTION



RADIATED EMISSION



○Testing circuitry

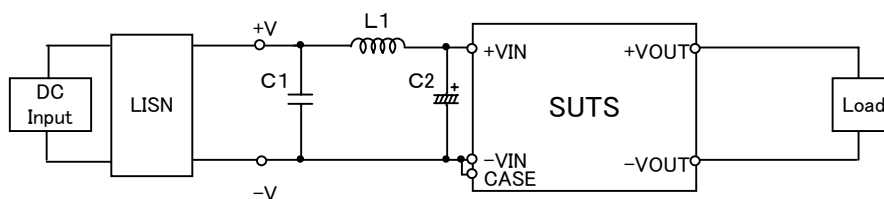


Fig.1 Testing circuitry 1

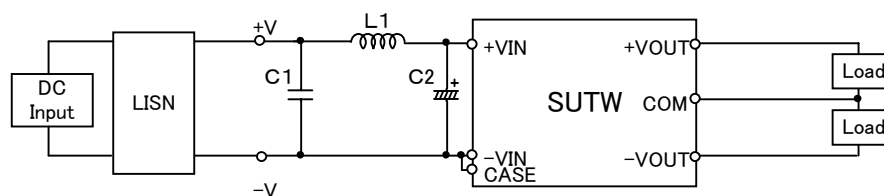


Fig.2 Testing circuitry 2

L1 :	1 μ H	CY3H-1R0	(KORIN ELECTRONICS)
C1 :	25V 1 μ F	C3216JB1E105M	(TDK)
C2 :	25V 220 μ F	LXZ25VB220(M)	(NIPPON CHEMI-COM)