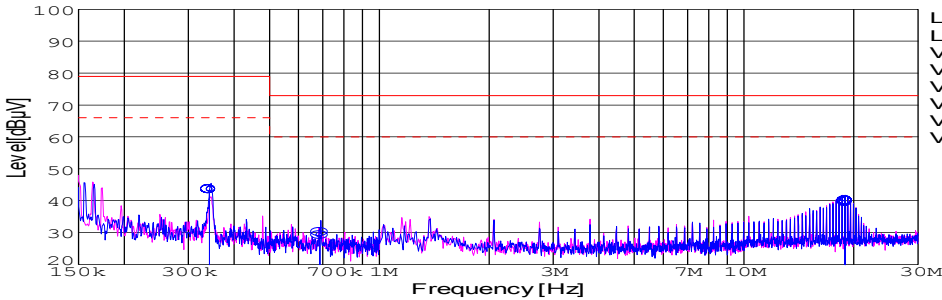
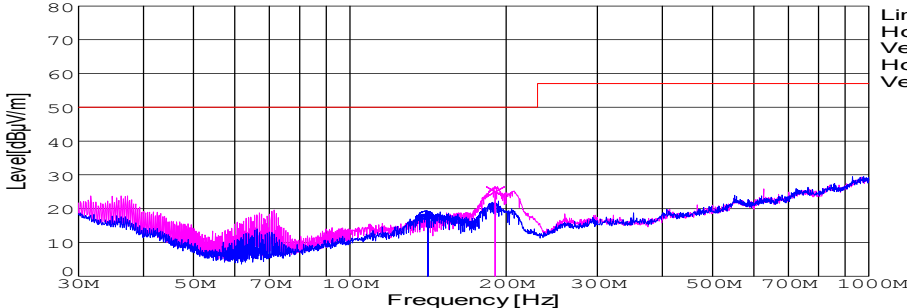


DATA SHEET							Date	18-Feb-05		
Model	SUS60512						Temp.	25 degreeC		
Test	EMI Line conduction & Radiated emission						Humid.	45 %RH		
							Tested by	Y.Hirose		
LINE CONDUCTION										
Model Name : SUS60512			Temp. : 25							
Model No. :			Humi. : 45							
Serial No. :			Date : 2005/2/18 16:06							
Points : 4			Test Equip. : R3132,ESPC							
Detector : PEAK/QP/Ave.			Comment : Y.Hirose							
Line Mode : VA/VB										
Power Supply : DC 5V										
Limit1: [EN 55022] Class A(QP)										
Limit2: [EN 55022] Class A(Ave.)										
							Limit1(QP) Limit2(Ave.) VA(PEAK) VB(PEAK) VA(QP) VA(Ave.) VB(QP) VB(Ave.)			
							DC 5V 12V0.5A			
Frequency [MHz]	Meter Reading (Ave.) [dBuV]	Meter Reading (QP) [dBuV]	Factor [dB]	Level(Ave.) [dBuV]	Level(QP) [dBuV]	Line	Limit(Ave.) [dBuV]	Limit(QP) [dBuV]	Margin(Ave.) [dB]	Margin(QP) [dB]
0.3423	33.7	33.6	9.8	43.5	43.4	VA	66	79	22.5	35.6
0.6876	19.3	20.4	9.9	29.2	30.3	VA	60	73	30.8	42.7
18.9072	29.9	29.5	10.3	40.2	39.8	VA	60	73	19.8	33.2
RADIATED EMISSION										
Model Name : SUS60512			Temp. : 25							
Model No. :			Humi. : 45							
Serial No. :			Date : 2005/2/21 18:26							
Points : 2			Test Equip. : R3132,ESPC							
Detector : PEAK/QP			Comment : Y.Hirose							
Polarization : Hori. & Vert.										
Power Supply : DC 5V										
Limit: [EN 55022] Class A<3m>										
							Limit(QP) Horizontal(PEAK) Vertical(PEAK) Horizontal(QP) Vertical(QP)			
							DC 5V 12V0.5A			
Frequency [MHz]	MeterReading (QP) [dBuV]	Ant. Type	Antenna Factor [dB/m]	Cable & Preamp [dB]	Level(QP) [dBuV/m]	Angle [°]	Height [cm]	Polar.	Limit [dBuV/m]	Margin [dB]
141.221	38.7	BL	10.8	-31.6	17.9	204	154	Hori.	50	32.1
190.704	48	BL	8.3	-31.3	25	354	116	Vert.	50	25

COSEL

Conditions

Test : EMI
Model Name : SUS/SUW 605□□

○Photographs of Test Set-Up

LINE CONDUCTION



RADIATED EMISSION



○Testing circuitry

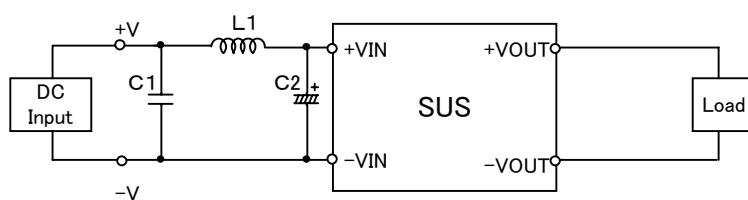


Fig.1 Testing circuitry 1

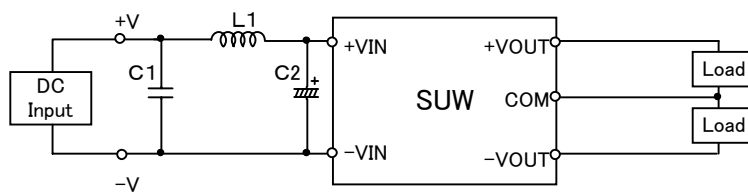


Fig.2 Testing circuitry 2

L1 :	0.5 μ H	CY3H-R50	(KORIN ELECTRONICS)
C1 :	25V 2.2 μ F	C3216JB1E225M	(TDK)
C2 :	16V 470 μ F	LXZ16VB470(M)	(NIPPON CHEMI-COM)