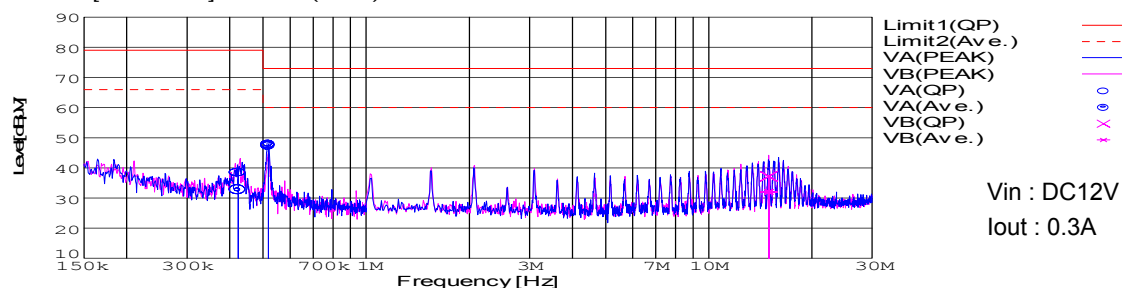


Date	17-May-05
Temp.	25degreeC
Humid.	45 %RH
Tested by	T.Ohara

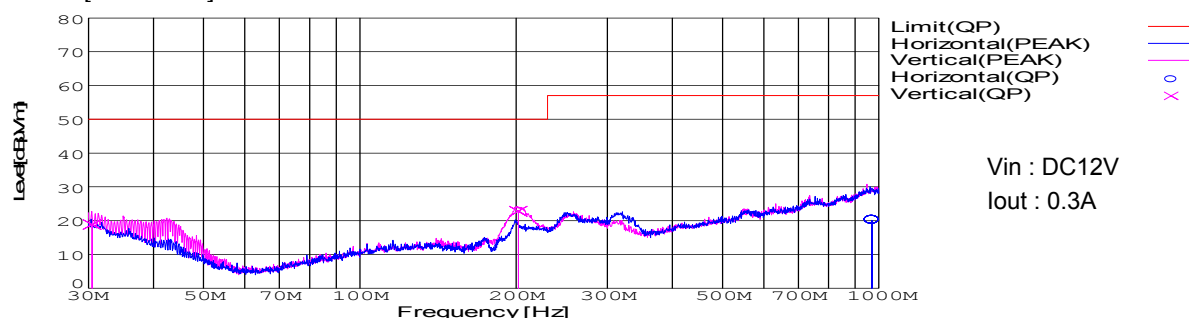
Model	SUS1R51205
Test	EMI Line conduction & Radiated emission

Model Name	SUS1R51205	Temp.	25degreeC
Model No.	-	Humi.	45%
Serial No.	-	Date	2004/10/7 18:46
Points	3	Test Equip.	R3132,ESPC
Detector	PEAK/QP/Ave.	Load Line	10mm
Line Mode	VA/VB	Comment	-
Power Supply	DC 12V		
Limit1: [EN 55022]	Class A(QP)		
Limit2: [EN 55022]	Class A(Ave.)		



Frequency [MHz]	Meter Reading (Ave.)[dBuV]	Meter Reading (QP)[dBuV]	Factor [dB]	Level(Ave.) [dBuV]	Level(QP) [dBuV]	Line	Limit(Ave.) [dBuV]	Limit(QP) [dBuV]	Margin(Ave.) [dB]	Margin(QP) [dB]
0.4237	22.7	28.4	9.9	32.6	38.3	VA	66	79	33.4	40.7
0.518	37.9	37.4	9.9	47.8	47.3	VA	60	73	12.2	25.7
14.9859	21.9	27.1	10.2	32.1	37.3	VB	60	73	27.9	35.7

Model Name	SUS1R51205	Temp.	25degreeC
Model No.		Humi.	45%
Serial No.		Date	2005/5/10 10:38
Points	3	Test Equip.	R3132,ESPC
Detector	PEAK/QP	Load Line	10mm
Polarization	Hori. & Vert.	Comment	
Power Supply	DC 12V		
Limit: IEN_550221	Class A<3m>		



Frequency [MHz]	MeterReading (QP)[dBuV]	Ant. Type	Antenna Factor[dB/m]	Cable & Preamp[dB]	Level(QP) [dBuV/m]	Angle [°]	Height[cm]	Polar.	Limit [dBuV/m]	Margin [dB]
969.027	24.1	BL	25.3	-29.3	20.1	353	103	Hori.	57	36.9
30.479	33.2	BL	18	-32.3	18.9	261	102	Vert.	50	31.1
201.96	45.6	BL	8.5	-31.3	22.8	16	115	Vert.	50	27.2

COSEL

Conditions

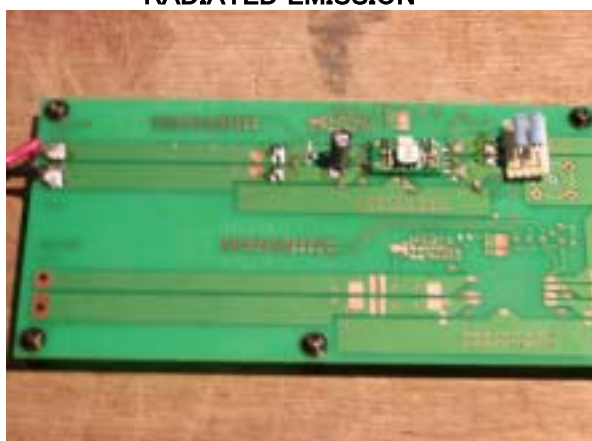
Test : EMI
Model Name : SUS/SUW 1R512

○Photographs of Test Set-Up

LINE CONDUCTION



RADIATED EMISSION



○Testing circuitry

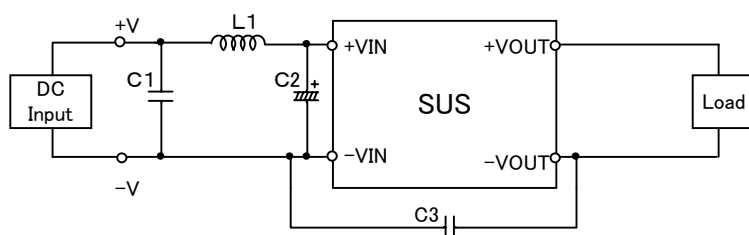


Fig.1 Testing circuitry 1

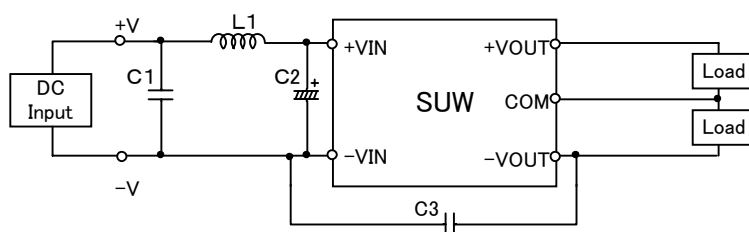


Fig.2 Testing circuitry 2

L1 :	4.7 μ H	GLF2518T4R7M	(TDK)
C1 :	25V 1 μ F	C2012JB1E105K	(TDK)
C2 :	25V 47 μ F	UPW1E470M	(NICHICON)
C3 :	1000V 100pF	GRM31AR33A101K	(MURATA)