

DATA SHEET							Date	18-Feb-05		
Model	SUCW60515						Temp.	25 degreeC		
Test	EMI Line conduction & Radiated emission						Humid.	45 %RH		
							Tested by	Y.Hirose		
LINE CONDUCTION										
Model Name : SUCW60515			Temp. : 25							
Model No. :			Humi. : 45							
Serial No. :			Date : 2005/2/18 16:28							
Points : 4			Test Equip. : R3132,ESPC							
Detector : PEAK/QP/Ave.			Comment : Y.Hirose							
Line Mode : VA/VB			+15V0.2A							
Power Supply : DC 5V			-15V0.2A							
Limit1: [EN 55022] Class A(QP)										
Limit2: [EN 55022] Class A(Ave.)										
							Limit1(QP) Limit2(Ave.) VA(PEAK) VB(PEAK) VA(QP) VA(Ave.) VB(QP) VB(Ave.)			
							DC 5V +15V0.2A -15V0.2A			
Frequency [MHz]	Meter Reading (Ave.) [dBuV]	Meter Reading (QP) [dBuV]	Factor [dB]	Level(Ave.) [dBuV]	Level(QP) [dBuV]	Line	Limit(Ave.) [dBuV]	Limit(QP) [dBuV]	Margin(Ave.) [dB]	Margin(QP) [dB]
20.214	29.7	29.8	10.3	40	40.1	VA	60	73	20	32.9
0.3419	35.7	35.4	9.8	45.5	45.2	VB	66	79	20.5	33.8
0.9787	9.2	10.4	9.9	19.1	20.3	VB	60	73	40.9	52.7
19.872	29.6	29.6	10.3	39.9	39.9	VB	60	73	20.1	33.1

RADIATED EMISSION										
Model Name : SUCW60515			Temp. : 25							
Model No. :			Humi. : 45							
Serial No. :			Date : 2005/2/21 18:04							
Points : 3			Test Equip. : R3132,ESPC							
Detector : PEAK/QP			Comment : Y.Hirose							
Polarization : Hori. & Vert.			+15V0.2A							
Power Supply : DC 5V			-15V0.2A							
Limit: [EN 55022] Class A<3m>										
							Limit(QP) Horizontal(PEAK) Vertical(PEAK) Horizontal(QP) Vertical(QP)			
							DC 5V +15V0.2A -15V0.2A			
Frequency [MHz]	MeterReading (QP) [dBuV]	Ant. Type	Antenna Factor [dB/m]	Cable & Preamp [dB]	Level(QP) [dBuV/m]	Angle [°]	Height [cm]	Polar.	Limit [dBuV/m]	Margin [dB]
135.424	44.9	BL	11	-31.6	24.3	207	154	Hori.	50	25.7
67.377	49.6	BL	5.1	-32	22.7	122	124	Vert.	50	27.3
200.709	48.4	BL	8.5	-31.3	25.6	244	119	Vert.	50	24.4

# COSEL

## Conditions

Test : EMI  
Model Name : SUCS/SUCW 605□□

○Photographs of Test Set-Up

### LINE CONDUCTION



### RADIATED EMISSION



○Testing circuitry

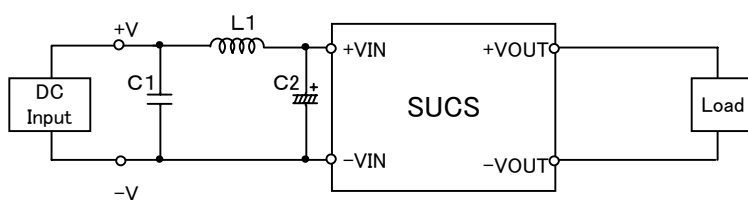


Fig.1 Testing circuitry 1

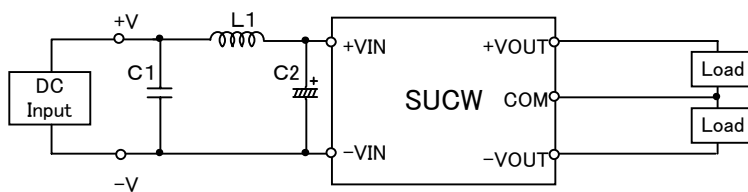


Fig.2 Testing circuitry 2

L1 :	0.5 $\mu$ H	CY3H-R50	(KORIN ELECTRONICS)
C1 :	25V    2.2 $\mu$ F	C3216JB1E225M	(TDK)
C2 :	16V    470 $\mu$ F	LXZ16VB470(M)	(NIPPON CHEMI-COM)