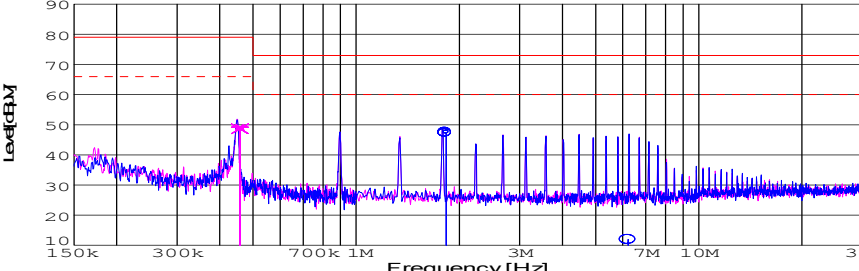
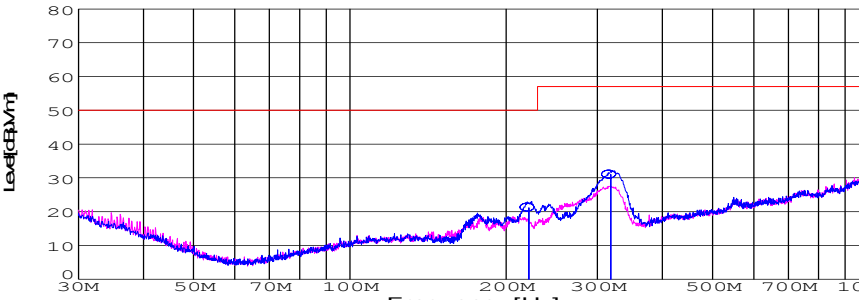


DATA SHEET							Date	17-May-05																																														
Model	SUCW1R52415						Temp.	25degreeC																																														
Test	EMI Line conduction & Radiated emission						Humid.	45 %RH																																														
							Tested by	T.Ohara																																														
LINE CONDUCTION																																																						
Model Name : SUCW1R52415			Temp. : 25degreeC																																																			
Model No. : -			Humi. : 45%																																																			
Serial No. : -			Date : 2004/10/8 17:05																																																			
Points : 3			Test Equip. : R3132,ESPC																																																			
Detector : PEAK/QP/Ave.			Load Line : 10mm																																																			
Line Mode : VA/VB			Comment : -																																																			
Power Supply : DC 24V																																																						
Limit1: [EN 55022] Class A(QP)																																																						
Limit2: [EN 55022] Class A(Ave.)																																																						
							Limit1(QP) : —																																															
							Limit2(Ave.) : - - -																																															
							VA(PEAK) : —																																															
							VB(PEAK) : —																																															
							VA(QP) : ○																																															
							VA(Ave.) : ○																																															
							VB(QP) : ○																																															
							VB(Ave.) : X																																															
							Vin : DC24V																																															
							Iout : 0.05A																																															
<table><tr><th>Frequency [MHz]</th><th>Meter Reading (Ave.) [dBuV]</th><th>Meter Reading (QP) [dBuV]</th><th>Factor [dB]</th><th>Level(Ave.) [dBuV]</th><th>Level(QP) [dBuV]</th><th>Line</th><th>Limit(Ave.) [dBuV]</th><th>Limit(QP) [dBuV]</th><th>Margin(Ave.) [dB]</th><th>Margin(QP) [dB]</th></tr><tr><td>1.8329</td><td>37.6</td><td>37.3</td><td>9.9</td><td>47.5</td><td>47.2</td><td>VA</td><td>60</td><td>73</td><td>12.5</td><td>25.8</td></tr><tr><td>6.2177</td><td>-2.4</td><td>2</td><td>10</td><td>7.6</td><td>12</td><td>VA</td><td>60</td><td>73</td><td>52.4</td><td>61</td></tr><tr><td>0.4573</td><td>39.4</td><td>38.8</td><td>9.9</td><td>49.3</td><td>48.7</td><td>VB</td><td>66</td><td>79</td><td>16.7</td><td>30.3</td></tr></table>											Frequency [MHz]	Meter Reading (Ave.) [dBuV]	Meter Reading (QP) [dBuV]	Factor [dB]	Level(Ave.) [dBuV]	Level(QP) [dBuV]	Line	Limit(Ave.) [dBuV]	Limit(QP) [dBuV]	Margin(Ave.) [dB]	Margin(QP) [dB]	1.8329	37.6	37.3	9.9	47.5	47.2	VA	60	73	12.5	25.8	6.2177	-2.4	2	10	7.6	12	VA	60	73	52.4	61	0.4573	39.4	38.8	9.9	49.3	48.7	VB	66	79	16.7	30.3
Frequency [MHz]	Meter Reading (Ave.) [dBuV]	Meter Reading (QP) [dBuV]	Factor [dB]	Level(Ave.) [dBuV]	Level(QP) [dBuV]	Line	Limit(Ave.) [dBuV]	Limit(QP) [dBuV]	Margin(Ave.) [dB]	Margin(QP) [dB]																																												
1.8329	37.6	37.3	9.9	47.5	47.2	VA	60	73	12.5	25.8																																												
6.2177	-2.4	2	10	7.6	12	VA	60	73	52.4	61																																												
0.4573	39.4	38.8	9.9	49.3	48.7	VB	66	79	16.7	30.3																																												
RADIATED EMISSION																																																						
Model Name : SUCW1R52415			Temp. : 25degreeC																																																			
Model No. : -			Humi. : 45%																																																			
Serial No. : -			Date : 2005/5/12 13:26																																																			
Points : 2			Test Equip. : R3132,ESPC																																																			
Detector : PEAK/QP			Load Line : 10mm																																																			
Polarization : Horizontal			Comment : -																																																			
Power Supply : DC 24V																																																						
Limit: [EN 55022] Class A<3m>																																																						
							Limit(QP) : —																																															
							Horizontal(PEAK) : —																																															
							Vertical(PEAK) : —																																															
							Horizontal(QP) : ○																																															
							Vin : DC24V																																															
							Iout : 0.05A																																															
<table><tr><th>Frequency [MHz]</th><th>MeterReading (QP) [dBuV]</th><th>Ant. Type</th><th>Antenna Factor [dB/m]</th><th>Cable & Preamp [dB]</th><th>Level(QP) [dBuV/m]</th><th>Angle [°]</th><th>Height [cm]</th><th>Polar.</th><th>Limit [dBuV/m]</th><th>Margin [dB]</th></tr><tr><td>318.174</td><td>48.4</td><td>BL</td><td>13.5</td><td>-30.9</td><td>31</td><td>333</td><td>103</td><td>Hori.</td><td>57</td><td>26</td></tr><tr><td>221.131</td><td>43.3</td><td>BL</td><td>9</td><td>-31.2</td><td>21.1</td><td>357</td><td>132</td><td>Hori.</td><td>50</td><td>28.9</td></tr></table>											Frequency [MHz]	MeterReading (QP) [dBuV]	Ant. Type	Antenna Factor [dB/m]	Cable & Preamp [dB]	Level(QP) [dBuV/m]	Angle [°]	Height [cm]	Polar.	Limit [dBuV/m]	Margin [dB]	318.174	48.4	BL	13.5	-30.9	31	333	103	Hori.	57	26	221.131	43.3	BL	9	-31.2	21.1	357	132	Hori.	50	28.9											
Frequency [MHz]	MeterReading (QP) [dBuV]	Ant. Type	Antenna Factor [dB/m]	Cable & Preamp [dB]	Level(QP) [dBuV/m]	Angle [°]	Height [cm]	Polar.	Limit [dBuV/m]	Margin [dB]																																												
318.174	48.4	BL	13.5	-30.9	31	333	103	Hori.	57	26																																												
221.131	43.3	BL	9	-31.2	21.1	357	132	Hori.	50	28.9																																												

COSEL

Conditions

Test : EMI
Model Name : SUCS/SUCW 1R524

○Photographs of Test Set-Up

LINE CONDUCTION



RADIATED EMISSION



○Testing circuitry

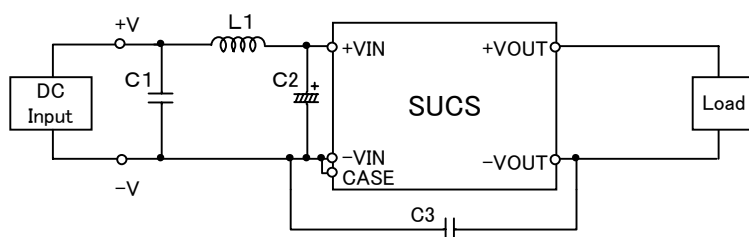


Fig.1 Testing circuitry 1

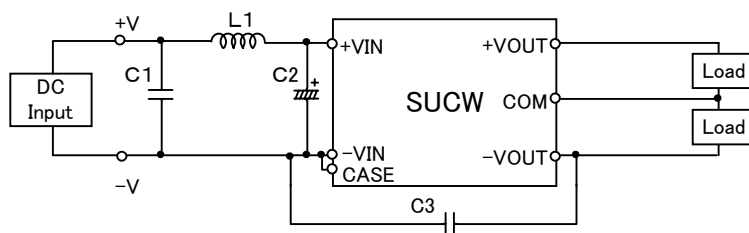


Fig.2 Testing circuitry 2

L1 :	10 μ H	GLF2518T100K	(TDK)
C1 :	50V 0.47 μ F	C2012JB1H474K	(TDK)
C2 :	50V 33 μ F	UPW1H330M	(NICHICON)
C3 :	1000V 100pF	GRM31AR33A101K	(MURATA)