

DATA SHEET							Date	17-May-05																																																									
Model	SUCS1R52412						Temp.	25degreeC																																																									
Test	EMI Line conduction & Radiated emission						Humid.	45 %RH																																																									
							Tested by	T.Ohara																																																									
LINE CONDUCTION																																																																	
Model Name		SUCS1R52412			Temp.		25degreeC																																																										
Model No.		-			Humi.		45%																																																										
Serial No.		-			Date		2004/10/8 16:52																																																										
Points		3			Test Equip.		R3132,ESPC																																																										
Detector		PEAK/QP/Ave.			Load Line		10mm																																																										
Line Mode		VA/VB			Comment		-																																																										
Power Supply		DC 24V																																																															
Limit1: [EN 55022] Class A(QP)																																																																	
Limit2: [EN 55022] Class A(Ave.)																																																																	
							Limit1(QP)		—																																																								
							Limit2(Ave.)		---																																																								
							VA(PEAK)		—																																																								
							VB(PEAK)		—																																																								
							VA(QP)		○																																																								
							VA(Ave.)		+																																																								
							VB(QP)		○																																																								
							VB(Ave.)		+																																																								
							Vin : DC24V																																																										
							Iout : 0.13A																																																										
<table><tr><th>Frequency [MHz]</th><th>Meter Reading (Ave.) [dBuV]</th><th>Meter Reading (QP) [dBuV]</th><th>Factor [dB]</th><th>Level(Ave.) [dBuV]</th><th>Level(QP) [dBuV]</th><th>Line</th><th>Limit(Ave.) [dBuV]</th><th>Limit(QP) [dBuV]</th><th>Margin(Ave.) [dB]</th><th>Margin(QP) [dB]</th></tr><tr><td>0.4988</td><td>40.6</td><td>40.1</td><td>9.9</td><td>50.5</td><td>50</td><td>VA</td><td>66</td><td>79</td><td>15.5</td><td>29</td></tr><tr><td>4.4939</td><td>28.2</td><td>32.5</td><td>10</td><td>38.2</td><td>42.5</td><td>VA</td><td>60</td><td>73</td><td>21.8</td><td>30.5</td></tr><tr><td>1.497</td><td>35.7</td><td>35.3</td><td>9.9</td><td>45.6</td><td>45.2</td><td>VB</td><td>60</td><td>73</td><td>14.4</td><td>27.8</td></tr></table>											Frequency [MHz]	Meter Reading (Ave.) [dBuV]	Meter Reading (QP) [dBuV]	Factor [dB]	Level(Ave.) [dBuV]	Level(QP) [dBuV]	Line	Limit(Ave.) [dBuV]	Limit(QP) [dBuV]	Margin(Ave.) [dB]	Margin(QP) [dB]	0.4988	40.6	40.1	9.9	50.5	50	VA	66	79	15.5	29	4.4939	28.2	32.5	10	38.2	42.5	VA	60	73	21.8	30.5	1.497	35.7	35.3	9.9	45.6	45.2	VB	60	73	14.4	27.8											
Frequency [MHz]	Meter Reading (Ave.) [dBuV]	Meter Reading (QP) [dBuV]	Factor [dB]	Level(Ave.) [dBuV]	Level(QP) [dBuV]	Line	Limit(Ave.) [dBuV]	Limit(QP) [dBuV]	Margin(Ave.) [dB]	Margin(QP) [dB]																																																							
0.4988	40.6	40.1	9.9	50.5	50	VA	66	79	15.5	29																																																							
4.4939	28.2	32.5	10	38.2	42.5	VA	60	73	21.8	30.5																																																							
1.497	35.7	35.3	9.9	45.6	45.2	VB	60	73	14.4	27.8																																																							
RADIATED EMISSION																																																																	
Model Name		SUCS1R52412			Temp.		25degreeC																																																										
Model No.		-			Humi.		45%																																																										
Serial No.		-			Date		2005/5/12 10:09																																																										
Points		4			Test Equip.		R3132,ESPC																																																										
Detector		PEAK/QP			Load Line		10mm																																																										
Polarization		Hori. & Vert.			Comment		-																																																										
Power Supply		DC 24V																																																															
Limit: [EN 55022] Class A<3m>																																																																	
							Limit(QP)		—																																																								
							Horizontal(PEAK)		—																																																								
							Vertical(PEAK)		—																																																								
							Horizontal(QP)		○																																																								
							Vertical(QP)		+																																																								
							Vin : DC24V																																																										
							Iout : 0.13A																																																										
<table><tr><th>Frequency [MHz]</th><th>Meter Reading (QP) [dBuV]</th><th>Ant. Type</th><th>Antenna Factor [dB/m]</th><th>Cable & Preamp [dB]</th><th>Level(QP) [dBuV/m]</th><th>Angle [°]</th><th>Height [cm]</th><th>Polar.</th><th>Limit [dBuV/m]</th><th>Margin [dB]</th></tr><tr><td>313.27</td><td>43.7</td><td>BL</td><td>13.4</td><td>-30.9</td><td>26.2</td><td>0</td><td>104</td><td>Hori.</td><td>57</td><td>30.8</td></tr><tr><td>220.765</td><td>40</td><td>BL</td><td>9</td><td>-31.2</td><td>17.8</td><td>348</td><td>137</td><td>Hori.</td><td>50</td><td>32.2</td></tr><tr><td>958.763</td><td>24</td><td>BL</td><td>25.1</td><td>-29.3</td><td>19.8</td><td>164</td><td>102</td><td>Vert.</td><td>57</td><td>37.2</td></tr><tr><td>36.596</td><td>34.1</td><td>BL</td><td>14.9</td><td>-32.2</td><td>16.8</td><td>146</td><td>116</td><td>Vert.</td><td>50</td><td>33.2</td></tr></table>											Frequency [MHz]	Meter Reading (QP) [dBuV]	Ant. Type	Antenna Factor [dB/m]	Cable & Preamp [dB]	Level(QP) [dBuV/m]	Angle [°]	Height [cm]	Polar.	Limit [dBuV/m]	Margin [dB]	313.27	43.7	BL	13.4	-30.9	26.2	0	104	Hori.	57	30.8	220.765	40	BL	9	-31.2	17.8	348	137	Hori.	50	32.2	958.763	24	BL	25.1	-29.3	19.8	164	102	Vert.	57	37.2	36.596	34.1	BL	14.9	-32.2	16.8	146	116	Vert.	50	33.2
Frequency [MHz]	Meter Reading (QP) [dBuV]	Ant. Type	Antenna Factor [dB/m]	Cable & Preamp [dB]	Level(QP) [dBuV/m]	Angle [°]	Height [cm]	Polar.	Limit [dBuV/m]	Margin [dB]																																																							
313.27	43.7	BL	13.4	-30.9	26.2	0	104	Hori.	57	30.8																																																							
220.765	40	BL	9	-31.2	17.8	348	137	Hori.	50	32.2																																																							
958.763	24	BL	25.1	-29.3	19.8	164	102	Vert.	57	37.2																																																							
36.596	34.1	BL	14.9	-32.2	16.8	146	116	Vert.	50	33.2																																																							

COSEL

Conditions

Test : EMI
Model Name : SUCS/SUCW 1R524

○Photographs of Test Set-Up

LINE CONDUCTION



RADIATED EMISSION



○Testing circuitry

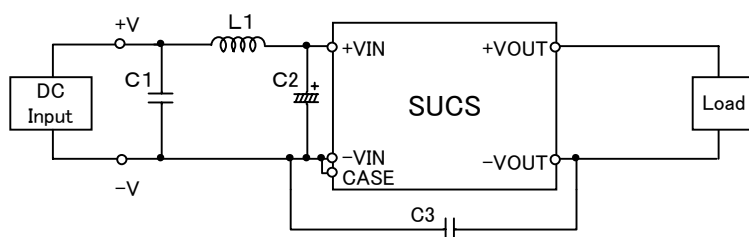


Fig.1 Testing circuitry 1

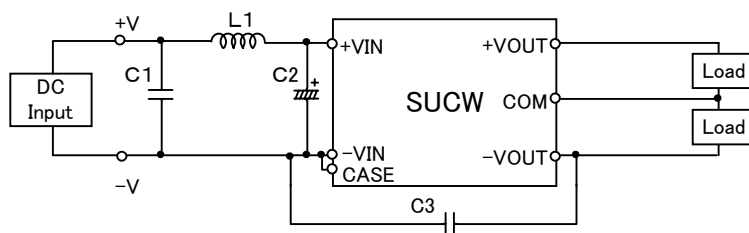


Fig.2 Testing circuitry 2

L1 :	10 μ H	GLF2518T100K	(TDK)
C1 :	50V 0.47 μ F	C2012JB1H474K	(TDK)
C2 :	50V 33 μ F	UPW1H330M	(NICHICON)
C3 :	1000V 100pF	GRM31AR33A101K	(MURATA)