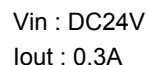


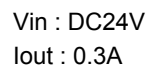
Date	17-May-05
Temp.	25degreeC
Humid.	45 %RH
Tested by	T.Ohara

Limit1: [EN 55022] Class A(QP)  
Limit2: [EN 55022] Class A(Ave.)



Frequency [MHz]	Meter Reading (Ave.)[dBuV]	Meter Reading (QP)[dBuV]	Factor [dB]	Level(Ave.) [dBuV]	Level(QP) [dBuV]	Line	Limit(Ave.) [dBuV]	Limit(QP) [dBuV]	Margin(Ave.) [dB]	Margin(QP) [dB]
0.1611	26.3	31.4	9.8	36.1	41.2	VA	66	79	29.9	37.8
0.5113	41.5	41.1	9.9	51.4	51	VA	60	73	8.6	22
2.0452	37.6	37.3	9.9	47.5	47.2	VB	60	73	12.5	25.8

Power Supply : DC 24V  
Limit: [EN 55022] Class A<3m>

[illegible]

# COSEL

## Conditions

Test : EMI  
Model Name : SUCS/SUCW 1R524

○Photographs of Test Set-Up

LINE CONDUCTION



RADIATED EMISSION



○Testing circuitry

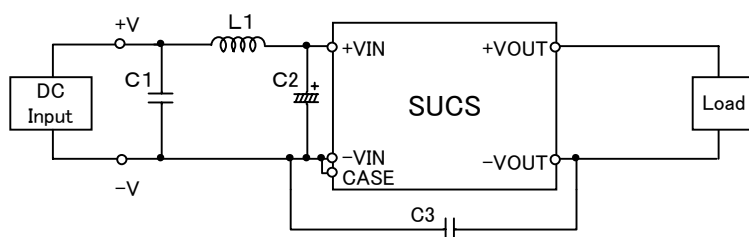


Fig.1 Testing circuitry 1

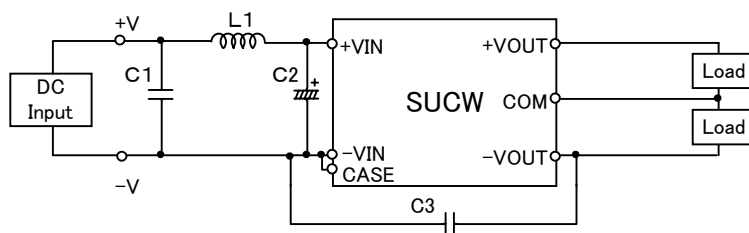


Fig.2 Testing circuitry 2

L1 :	10 $\mu$ H	GLF2518T100K	(TDK)
C1 :	50V 0.47 $\mu$ F	C2012JB1H474K	(TDK)
C2 :	50V 33 $\mu$ F	UPW1H330M	(NICHICON)
C3 :	1000V 100pF	GRM31AR33A101K	(MURATA)