

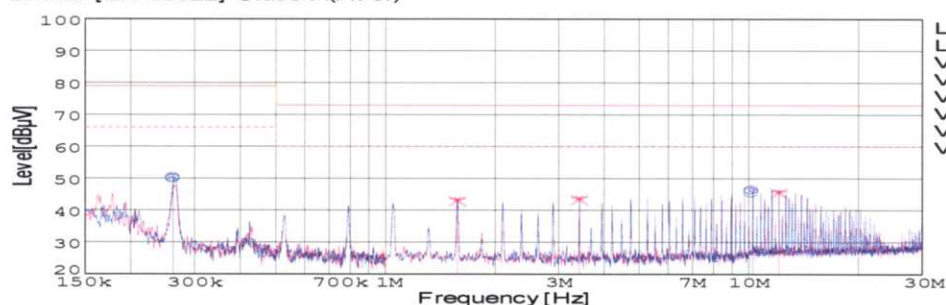
DATA SHEET

Model		SUCS104805	Date	28-Jan-05
Test		EMI Line conduction & Radiated emission	Temp.	25degreeC
			Humid.	45 %RH
			Tested by	C.Makino

LINE CONDUCTION

Model Name : SUCS104805
 Model No. :
 Serial No. :
 Points : 5
 Detector : PEAK/QP/Ave.
 Line Mode : VA/VB
 Power Supply : DC 48V
 Limit1: [EN 55022] Class A(QP)
 Limit2: [EN 55022] Class A(Ave.)

Temp. : 25degreeC
 Humi. : 45%
 Date : 2005/1/28 15:41
 Test Equip. : R3132,ESPC
 Load Line : 50mm
 Comment : C.Makino



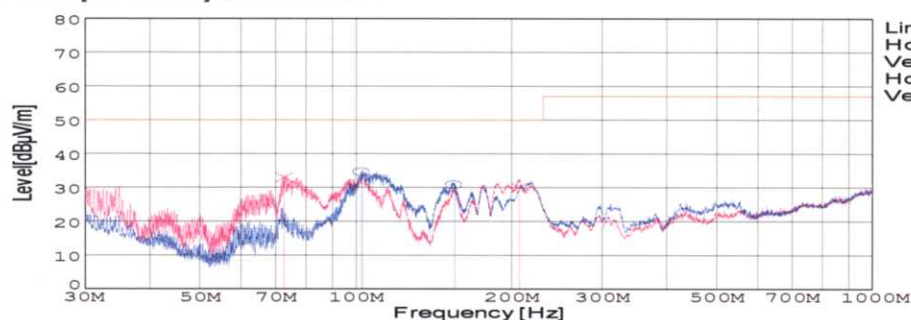
Limit1(QP)
 Limit2(Ave.)
 VA(PEAK)
 VB(PEAK)
 VA(QP)
 VA(Ave.)
 VB(QP)
 VB(Ave.)

Frequency [MHz]	Meter Reading (Ave.) [dBuV]	Meter Reading (QP) [dBuV]	Factor [dB]	Level(Ave.) [dBuV]	Level(QP) [dBuV]	Line	Limit(Ave.) [dBuV]	Limit(QP) [dBuV]	Margin(Ave.) [dB]	Margin(QP) [dB]
0.261	40.8	40.2	9.8	50.6	50	VA	66	79	15.4	29
10.2101	36.3	35.6	10.1	46.4	45.7	VA	60	73	13.6	27.3
1.5712	33.7	33.1	9.9	43.6	43	VB	60	73	16.4	30
3.4031	34	33.4	10	44	43.4	VB	60	73	16	29.6
12.0419	35.9	35.3	10.1	46	45.4	VB	60	73	14	27.6

RADIATED EMISSION

Model Name : SUCS104805
 Model No. :
 Serial No. :
 Points : 4
 Detector : PEAK/QP
 Polarization : Hori. & Vert.
 Power Supply : DC 48V
 Limit: [EN 55022] Class A<3m>

Temp. : 25degreeC
 Humi. : 45%
 Date : 2005/1/28 15:58
 Test Equip. : R3132,ESPC
 Load Line : 50mm
 Comment : C.Makino



Limit(QP)
 Horizontal(PEAK)
 Vertical(PEAK)
 Horizontal(QP)
 Vertical(QP)

Frequency [MHz]	Meter Reading (QP) [dBuV]	Ant. Type	Antenna Factor [dB/m]	Cable & Preamp [dB]	Level(QP) [dBuV/m]	Angle [°]	Height [cm]	Polar.	Limit [dBuV/m]	Margin [dB]
102.454	56.5	BL	9.9	-31.7	34.7	351	150	Hori.	50	15.3
154.829	52.2	BL	10.3	-31.5	31	193	160	Hori.	50	19
206.729	52.8	BL	8.6	-31.3	30.1	10	103	Vert.	50	19.9
72.576	59.1	BL	5.9	-31.9	33.1	58	113	Vert.	50	16.9

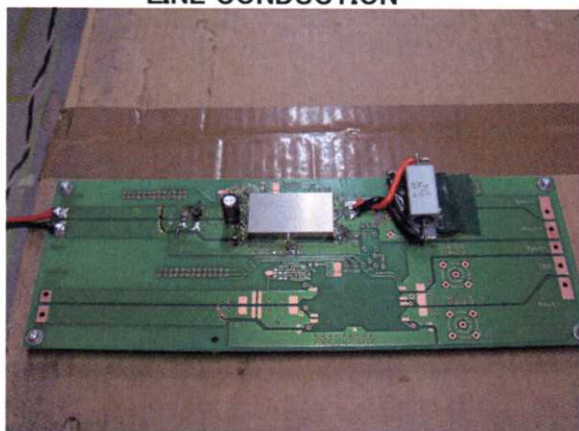
COSEL

Conditions

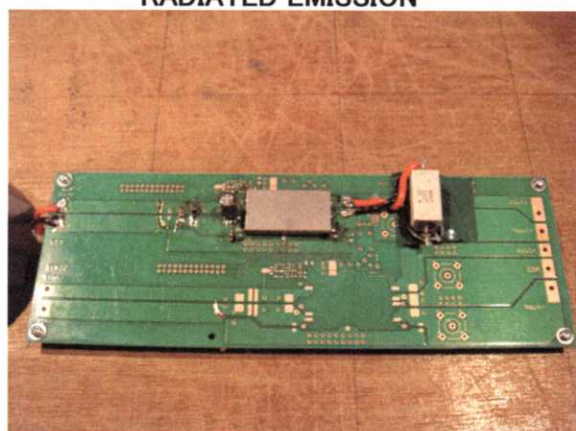
Test : EMI
Model Name : SUCS/SUCW1048

○Photographs of Test Set-Up

LINE CONDUCTION



RADIATED EMISSION



○Testing circuitry

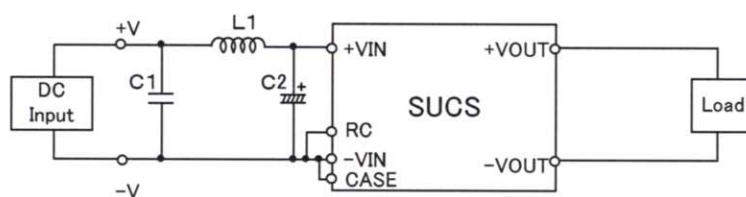


Fig.1 Testing circuitry 1

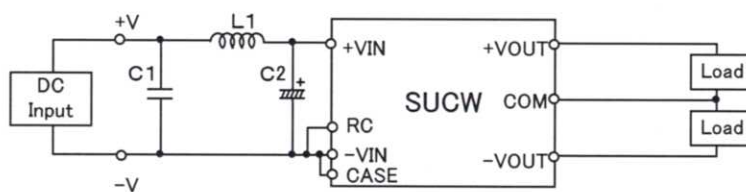


Fig.2 Testing circuitry 2

L1 : 10 μ H	CY3H-100	(KORIN ELECTRONICS)
C1 : 100V 2.2 μ F	C4532JB2A225M	(TDK)
C2 : 100V 47 μ F	UPW2A470M	(NICHICON)

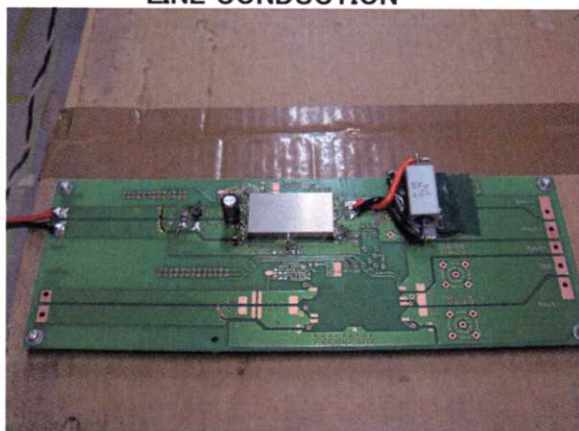


Conditions

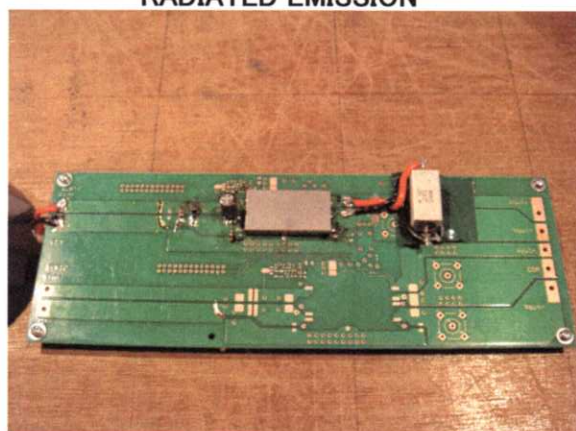
Test : EMI
Model Name : SUCS/SUCW1048

○Photographs of Test Set-Up

LINE CONDUCTION



RADIATED EMISSION



○Testing circuitry

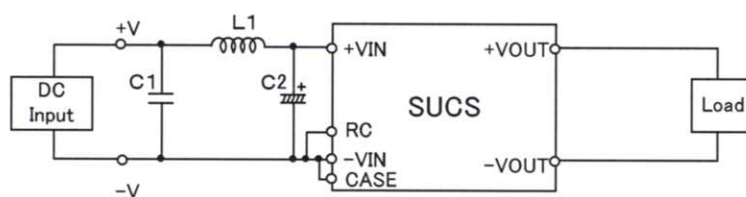


Fig.1 Testing circuitry 1

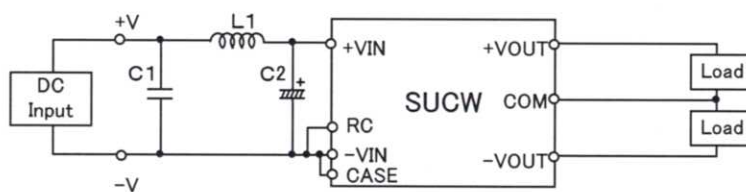


Fig.2 Testing circuitry 2

L1 : 10 μ H	CY3H-100	(KORIN ELECTRONICS)
C1 : 100V 2.2 μ F	C4532JB2A225M	(TDK)
C2 : 100V 47 μ F	UPW2A470M	(NICHICON)