

DATA SHEET							Date	28-Jan-05		
Model	SUCS102405						Temp.	25degreeC		
Test	EMI Line conduction & Radiated emission						Humid.	45 %RH		
							Tested by	C.Makino		
LINE CONDUCTION										
Model Name		SUCS102405			Temp.		25degreeC			
Model No.					Humi.		45%			
Serial No.					Date		2005/1/28 13:46			
Points		2			Test Equip.		R3132,ESPC			
Detector		PEAK/QP/Ave.			Load Line		50mm			
Line Mode		VA			Comment		C.Makino			
Power Supply		DC 24V								
Limit1: [EN 55022]		Class A(QP)								
Limit2: [EN 55022]		Class A(Ave.)								
							Limit1(QP) Limit2(Ave.) VA(PEAK) VB(PEAK) VA(QP) VA(Ave.)			
							Vin : DC24V			
Frequency [MHz]	Meter Reading (Ave.) [dBuV]	Meter Reading (QP) [dBuV]	Factor [dB]	Level(Ave.) [dBuV]	Level(QP) [dBuV]	Line	Limit(Ave.) [dBuV]	Limit(QP) [dBuV]	Margin(Ave.) [dB]	Margin(QP) [dB]
0.1627	25.7	31.4	9.8	35.5	41.2	VA	66	79	30.5	37.8
0.2702	37.5	37	9.8	47.3	46.8	VA	66	79	18.7	32.2

RADIATED EMISSION										
Model Name		SUCS102405			Temp.		25degreeC			
Model No.					Humi.		45%			
Serial No.					Date		2005/1/28 11:47			
Points		3			Test Equip.		R3132,ESPC			
Detector		PEAK/QP			Load Line		50mm			
Polarization		Hori. & Vert.			Comment		C.Makino			
Power Supply		DC 24V								
Limit: [EN 55022]		Class A<3m>								
							Limit(QP) Horizontal(PEAK) Vertical(PEAK) Horizontal(QP) Vertical(QP)			
							Vin : DC24V			
Frequency [MHz]	MeterReading (QP) [dBuV]	Ant. Type	Antenna Factor[dB/m]	Cable & Preamp[dB]	Level(QP) [dBuV/m]	Angle [°]	Height[cm]	Polar.	Limit [dBuV/m]	Margin [dB]
171.349	54.9	BL	8.8	-31.4	32.3	177	157	Hori.	50	17.7
59.636	60.9	BL	4.8	-32	33.7	104	120	Vert.	50	16.3
73.131	58.9	BL	6	-31.9	33	125	100	Vert.	50	17

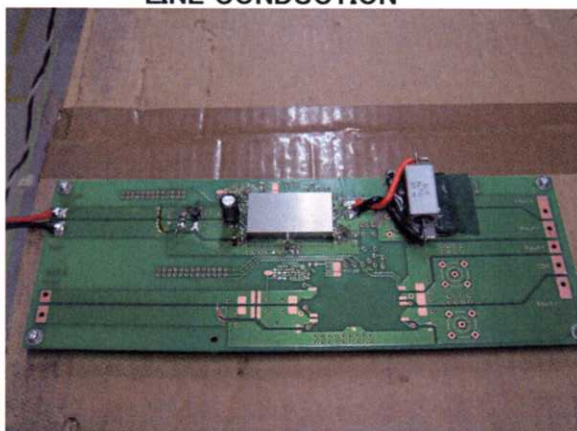
COSEL

Conditions

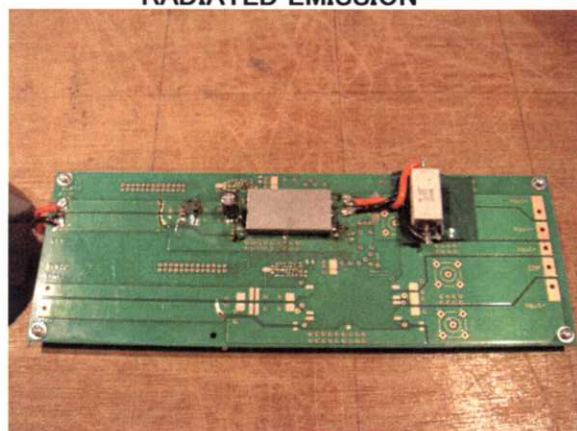
Test : EMI
Model Name : SUCS/SUCW1024

○Photographs of Test Set-Up

LINE CONDUCTION



RADIATED EMISSION



○Testing circuitry

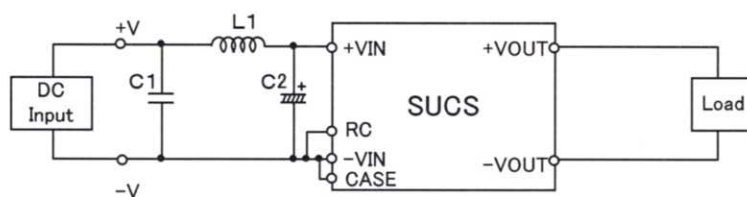


Fig.1 Testing circuitry 1

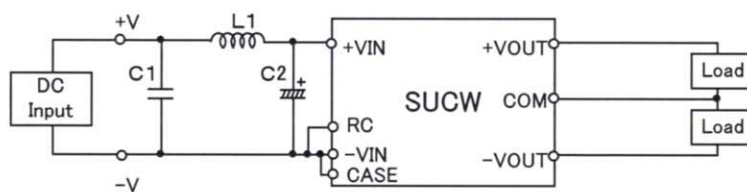


Fig.2 Testing circuitry 2

L1 : 2.2 μ H	CY3H-2R2	(KORIN ELECTRONICS)
C1: 50V 3.3 μ F	C3225JB1H335M	(TDK)
C2: 50V 100 μ F	UPM1H101M	(NICHICON)