

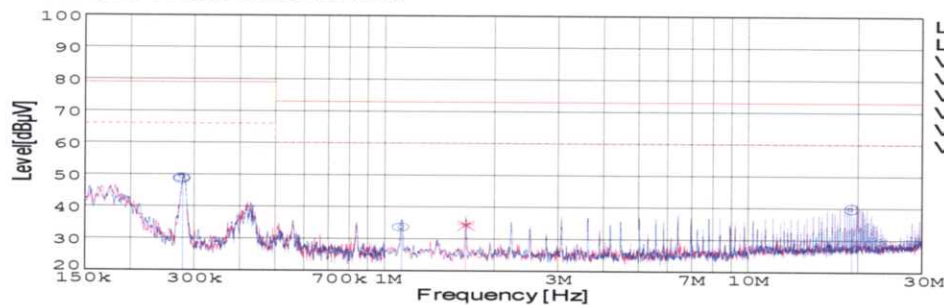
DATA SHEET

Model		SUCS101205	Date	12-Mar-05
Test		EMI Line conduction & Radiated emission	Temp.	25degreeC
			Humid.	45 %RH
			Tested by	C.Makino

LINE CONDUCTION

Model Name : SUCS101205
Model No. :
Serial No. :
Points : 4
Detector : PEAK/QP/Ave.
Line Mode : VA/VB
Power Supply : DC 12V
Limit1: [EN 55022] Class A(QP)
Limit2: [EN 55022] Class A(Ave.)

Temp. : 25degreeC
Humi. : 45%
Date : 2005/3/12 15:42
Test Equip. : R3132,ESPC
Load Line : 50mm
Comment : C.Makino



Limit1(QP)
Limit2(Ave.)
VA(PEAK)
VB(PEAK)
VA(QP)
VA(Ave.)
VB(QP)
VB(Ave.)

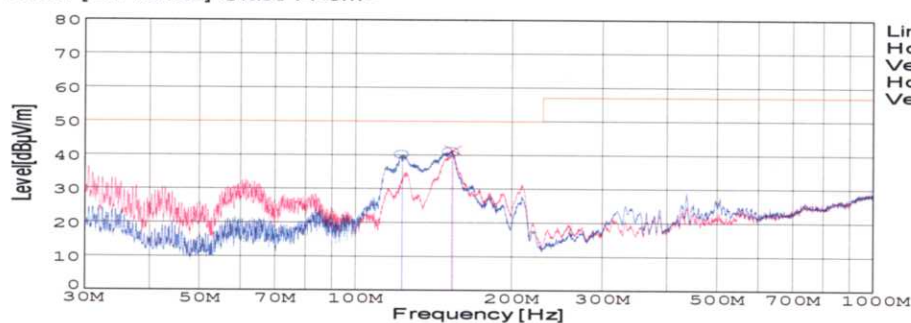
Vin: DC12V
Iout: 2A

Frequency [MHz]	Meter Reading (Ave.) [dBuV]	Meter Reading (QP) [dBuV]	Factor [dB]	Level(Ave.) [dBuV]	Level(QP) [dBuV]	Line	Limit(Ave.) [dBuV]	Limit(QP) [dBuV]	Margin(Ave.) [dB]	Margin(QP) [dB]
0.2779	39.4	38.8	9.8	49.2	48.6	VA	66	79	16.8	30.4
1.1114	23.7	23.6	9.9	33.6	33.5	VA	60	73	26.4	39.5
19.193	29.6	29.5	10.3	39.9	39.8	VA	60	73	20.1	33.2
1.6699	24.7	24.4	9.9	34.6	34.3	VB	60	73	25.4	38.7

RADIATED EMISSION

Model Name : SUCS101205
Model No. :
Serial No. :
Points : 3
Detector : PEAK/QP
Polarization : Hori. & Vert.
Power Supply : DC 12V
Limit: [EN 55022] Class A<3m>

Temp. : 25degreeC
Humi. : 45%
Date : 2005/3/15 14:41
Test Equip. : R3132,ESPC
Load Line : 50mm
Comment : C.Makino



Limit(QP)
Horizontal(PEAK)
Vertical(PEAK)
Horizontal(QP)
Vertical(QP)

Vin: DC12V
Iout: 2A

Frequency [MHz]	Meter Reading (QP) [dBuV]	Ant. Type	Antenna Factor [dB/m]	Cable & Preamp [dB]	Level(QP) [dBuV/m]	Angle [°]	Height [cm]	Polar.	Limit [dBuV/m]	Margin [dB]
122.962	60.8	BL	11	-31.7	40.1	193	146	Hori.	50	9.9
153.195	62	BL	10.4	-31.5	40.9	215	157	Hori.	50	9.1
154.042	62.8	BL	10.3	-31.5	41.6	101	156	Vert.	50	8.4

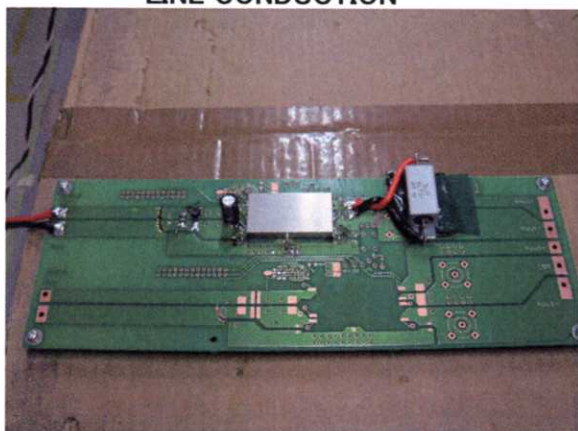


Conditions

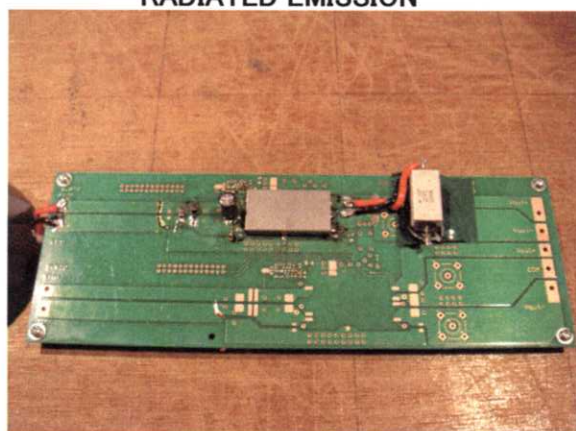
Test : EMI
Model Name : SUCS/SUCW1012

○Photographs of Test Set-Up

LINE CONDUCTION



RADIATED EMISSION



○Testing circuitry

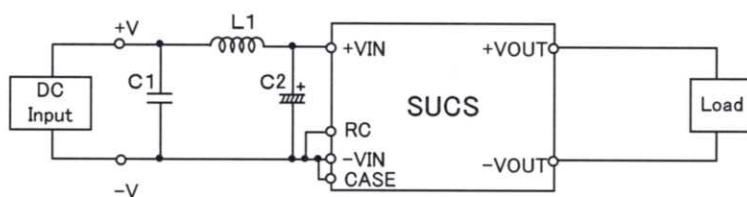


Fig.1 Testing circuitry 1

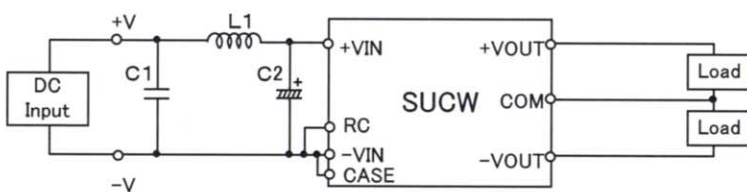


Fig.2 Testing circuitry 2

L1 : 1 μ H	CI4-1R0	(KORIN ELECTRONICS)
C1: 25V 10 μ F	C3225JB1E106M	(TDK)
C2: 25V 220 μ F	UPW1E221M	(NICHICON)