

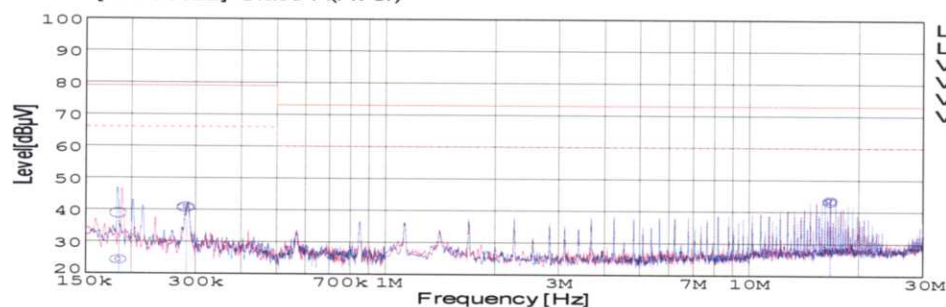
DATA SHEET

Model		SUCS100512	Date	01-Mar-05
Test		EMI	Temp.	25degreeC
		Line conduction & Radiated emission	Humid.	45 %RH
			Tested by	C.Makino

LINE CONDUCTION

Model Name : SUCS100512
 Model No. :
 Serial No. :
 Points : 4
 Detector : PEAK/QP/Ave.
 Line Mode : VA
 Power Supply : DC 5V
 Limit1: [EN 55022] Class A(QP)
 Limit2: [EN 55022] Class A(Ave.)

Temp. : 25degreeC
 Humi. : 45%
 Date : 2005/3/1 16:00
 Test Equip. : R3132,ESPC
 Load Line : 50mm
 Comment : C.Makino



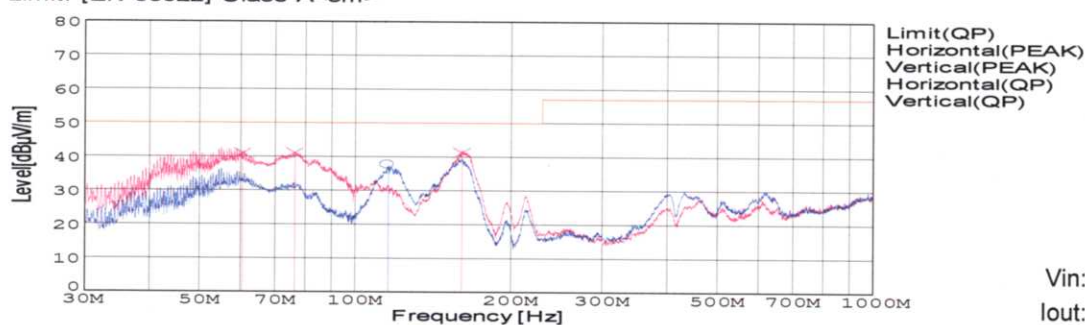
Vin: DC5V
Iout: 0.9A

Frequency [MHz]	Meter Reading (Ave.) [dBuV]	Meter Reading (QP) [dBuV]	Factor [dB]	Level(Ave.) [dBuV]	Level(QP) [dBuV]	Line	Limit(Ave.) [dBuV]	Limit(QP) [dBuV]	Margin(Ave.) [dB]	Margin(QP) [dB]
0.1849	14.4	29	9.8	24.2	38.8	VA	66	79	41.8	40.2
0.2828	31	30.7	9.8	40.8	40.5	VA	66	79	25.2	38.5
16.6485	33.3	32.8	10.2	43.5	43	VA	60	73	16.5	30
16.6463	33.4	32.8	10.2	43.6	43	VA	60	73	16.4	30

RADIATED EMISSION

Model Name : SUCS100512
 Model No. :
 Serial No. :
 Points : 4
 Detector : PEAK/QP
 Polarization : Hori. & Vert.
 Power Supply : DC 5V
 Limit: [EN 55022] Class A<3m>

Temp. : 25degreeC
 Humi. : 45%
 Date : 2005/2/22 20:31
 Test Equip. : R3132,ESPC
 Load Line : 50mm
 Comment : C.Makino



Vin: DC5V
Iout: 0.9A

Frequency [MHz]	MeterReading (QP) [dBuV]	Ant. Type	Antenna Factor [dB/m]	Cable & Preamp [dB]	Level(QP) [dBuV/m]	Angle [°]	Height [cm]	Polar.	Limit [dBuV/m]	Margin [dB]
116.075	58.5	BL	10.9	-31.7	37.7	39	152	Hori.	50	12.3
60.454	68.3	BL	4.7	-32	41	119	122	Vert.	50	9
76.352	66.5	BL	6.6	-31.9	41.2	121	114	Vert.	50	8.8
160.94	63	BL	9.8	-31.5	41.3	49	160	Vert.	50	8.7

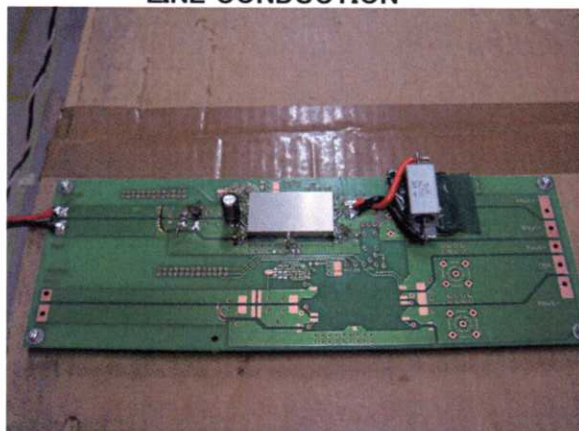


Conditions

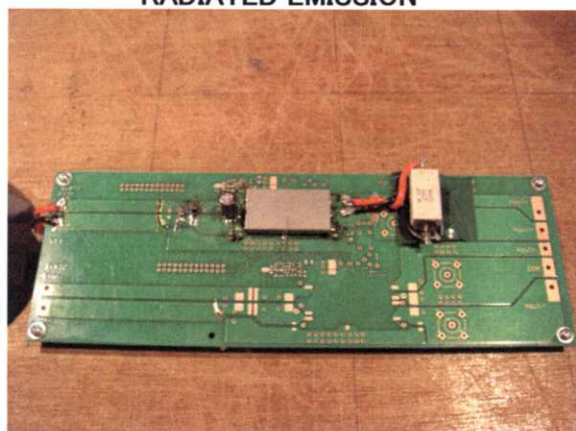
Test : EMI
Model Name : SUCS/SUCW1005

○Photographs of Test Set-Up

LINE CONDUCTION



RADIATED EMISSION



○Testing circuitry

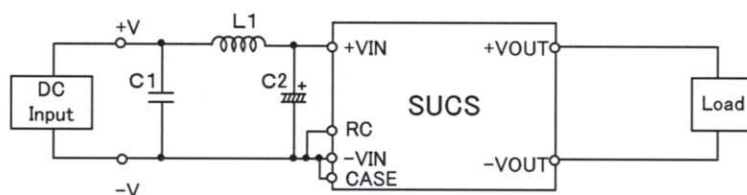


Fig.1 Testing circuitry 1

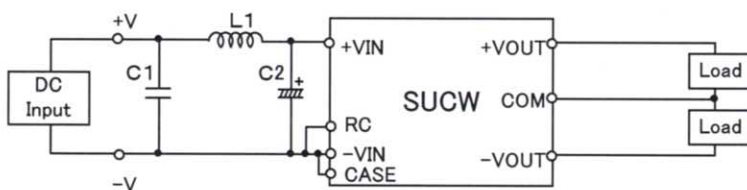


Fig.2 Testing circuitry 2

L1 : 0.5 μ H	CI4-0R5	(KORIN ELECTRONICS)
C1: 25V 22 μ F	GRM32ER71C226K	(MURATA)
C2: 25V 470 μ F	UPM1E471M	(NICHICON)