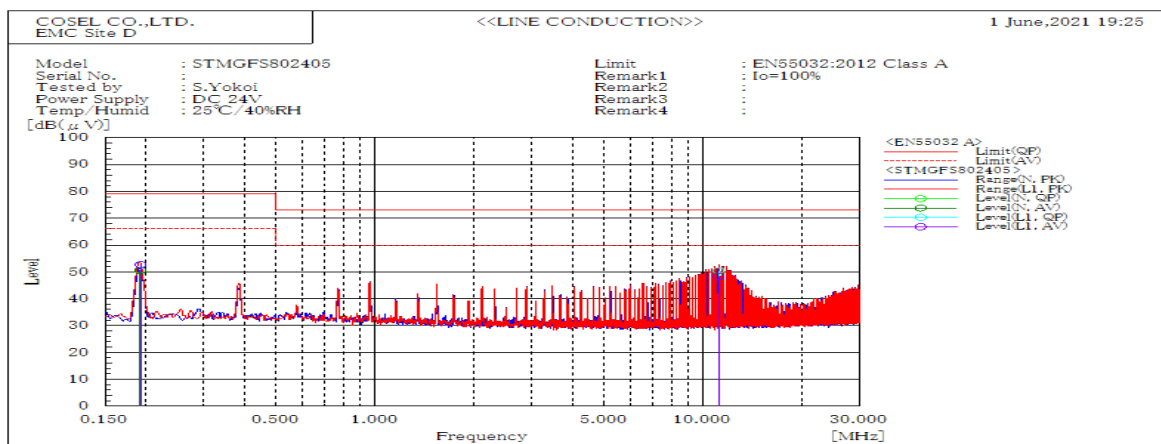
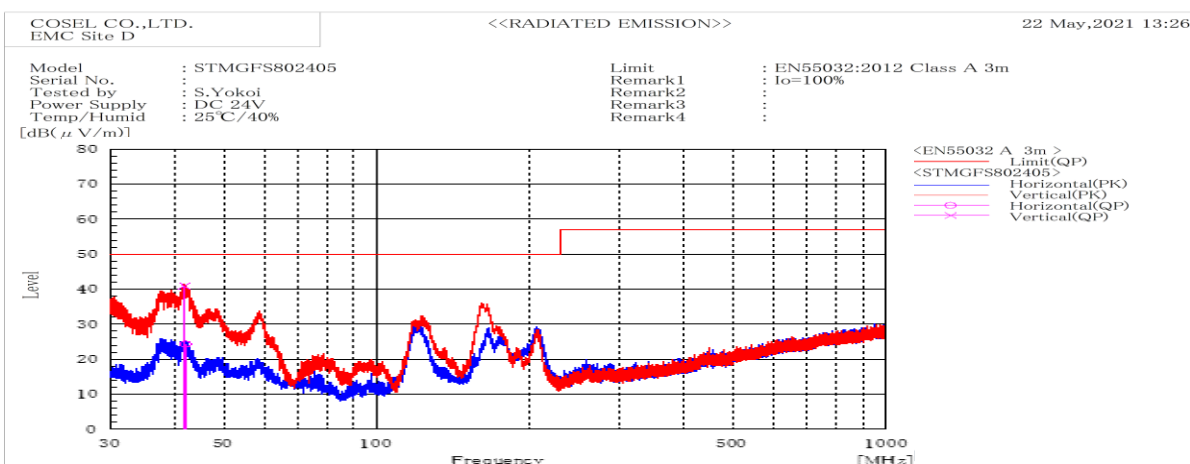


## DATA SHEET

Model	STMGFS802405	Date	08-Jul-21
Test	EMI	Temp.	25 degreeC
	Line conduction & Radiated emission	Humid.	40 %RH
		Tested by	S.Yokoi



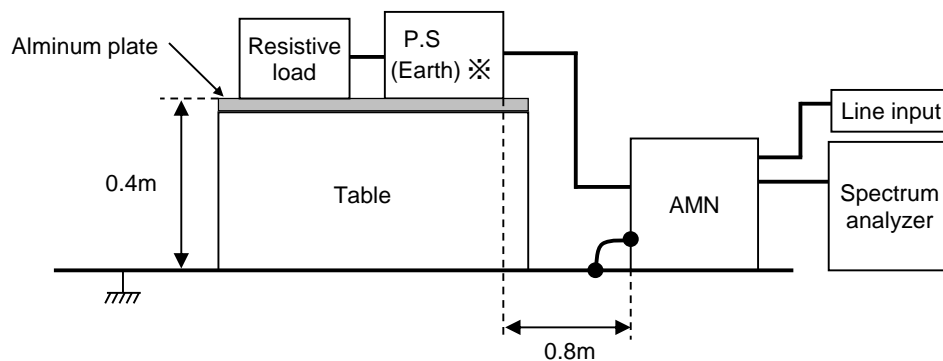
Frequency	Line	Level		Limit		Margin		Pass/Fail	Remark
MHz		dB(μV)		dB(μV)		dB			
		QP	AV	QP	AV	QP	AV		
0.192	L1	52.8	52.7	79	66	26.2	13.3	Pass	
11.148	L1	50.5	48.3	73	60	22.5	11.7	Pass	
0.192	N	50.7	50.6	79	66	28.3	15.4	Pass	
11.147	N	50.4	48.4	73	60	22.6	11.6	Pass	



Frequency	Polarization	Stability	Level	Limit	Margin	Pass/Fail	Height	Angle	Remark
MHz			dB(μV/m)	dB(μV/m)	dB		cm	deg	
			QP	QP	QP				
41.837	V	Stable	40.9	50	9.1	Pass	100	350	
42.009	H	Stable	24.3	50	25.7	Pass	107.5	0	

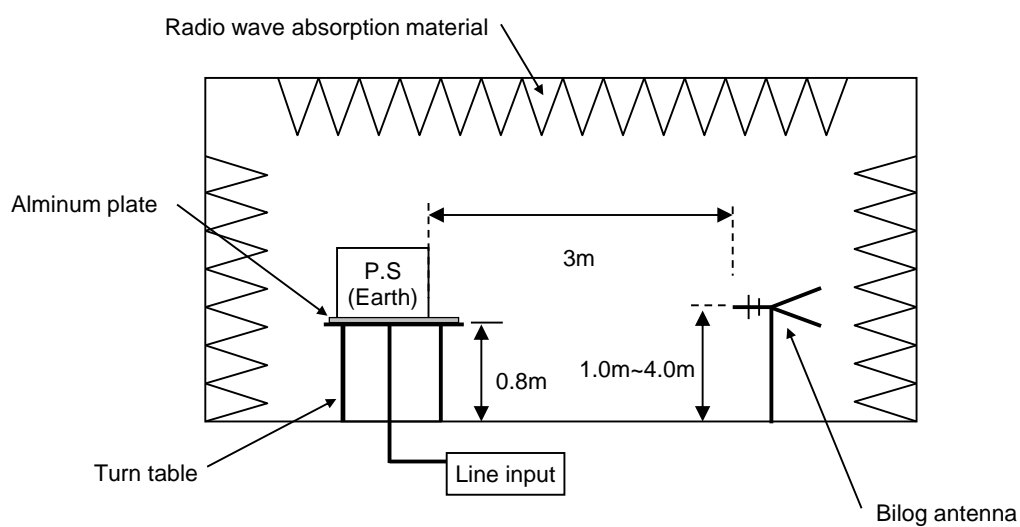
DATA SHEET		Date	08-Jul-21
Model	Circuit used for measurement	Temp.	25 degreeC
Test	EMI Line conduction & Radiated emission	Humid.	40 %RH
		Tested by	S.Yokoi

## 1. Line conduction



※External capacitor on the input side : 220 $\mu$ F

## 2. Radiated emission



# Conditions

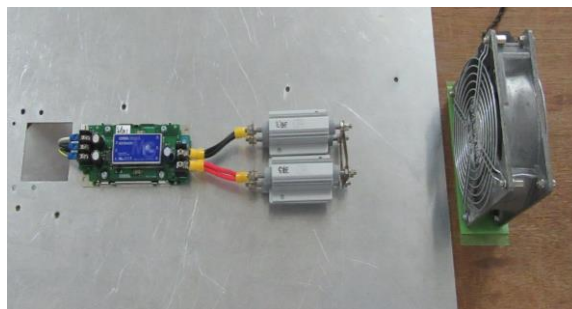
Test : EMI

Model Name : STMGFS80□□

## ○Photographs of Test Set-Up LINE CONDUCTION



## RADIATED EMISSION



## ○Testing circuitry

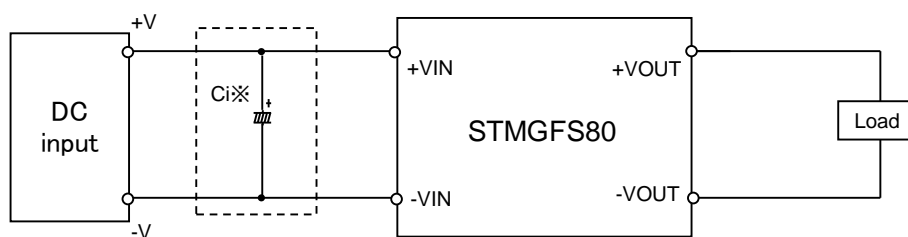


Fig.1 Testing circuitry

※Ci : External capacitor on the input side when LINE CONDUCTION

Ci : STMGFS8024□□ 220  $\mu$  F  
STMGFS8048□□ 120  $\mu$  F