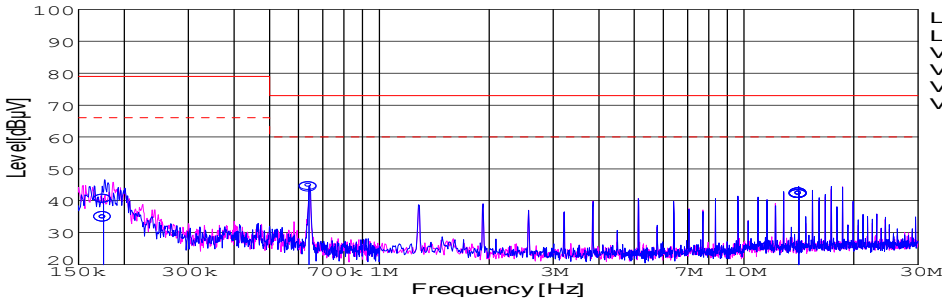
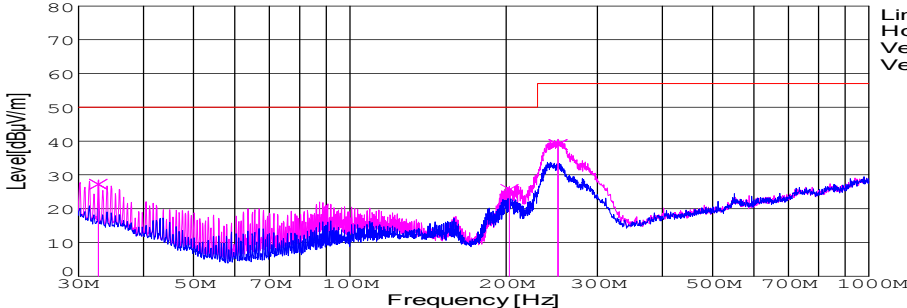


| DATA SHEET | | | | | | | Date | 12-Oct-07 | | |
|--|--|---------------------------|----------------------------------|---------------------|--------------------|-----------|---|------------------|-------------------|-----------------|
| Model | SFS154815 | | | | | | Temp. | 25 degreeC | | |
| Test | EMI Line conduction & Radiated emission | | | | | | Humid. | 45 %RH | | |
| | | | | | | | Tested by | Y.Miyawaki | | |
| LINE CONDUCTION | | | | | | | | | | |
| Model Name : SFS154815 | | | Temp. : 25degreeC | | | | | | | |
| Model No. : | | | Humi. : 45% | | | | | | | |
| Serial No. : | | | Date : 2007/10/12 15:59 | | | | | | | |
| Points : 3 | | | Test Equip. : R3132,ESPC | | | | | | | |
| Detector : PEAK/QP/Ave. | | | Load Line : 100mm | | | | | | | |
| Line Mode : VA | | | Comment : Vo = 15.0V , Io = 1.0A | | | | | | | |
| Power Supply : DC 48V | | | | | | | | | | |
| Limit1: [CISPR Pub11] Class A Gr.1(QP) | | | | | | | | | | |
| Limit2: [CISPR Pub11] Class A Gr.1(Ave.) | | | | | | | | | | |
|  | | | | | | | <div>Limit1(QP) ———</div> <div>Limit2(Ave.) - - -</div> <div>VA(PEAK) ———</div> <div>VB(PEAK) ———</div> <div>VA(QP) ○</div> <div>VA(Ave.) ●</div> | | | |
| Frequency [MHz] | Meter Reading (Ave.) [dBuV] | Meter Reading (QP) [dBuV] | Factor [dB] | Level(Ave.) [dBuV] | Level(QP) [dBuV] | Line | Limit(Ave.) [dBuV] | Limit(QP) [dBuV] | Margin(Ave.) [dB] | Margin(QP) [dB] |
| 0.1756 | 25.1 | 30.9 | 9.8 | 34.9 | 40.7 | VA | 66 | 79 | 31.1 | 38.3 |
| 0.6419 | 34.7 | 34.4 | 9.9 | 44.6 | 44.3 | VA | 60 | 73 | 15.4 | 28.7 |
| 14.1134 | 32 | 32.1 | 10.2 | 42.2 | 42.3 | VA | 60 | 73 | 17.8 | 30.7 |
| RADIATED EMISSION | | | | | | | | | | |
| Model Name : SFS154815 | | | Temp. : 25degreeC | | | | | | | |
| Model No. : | | | Humi. : 45% | | | | | | | |
| Serial No. : | | | Date : 2007/10/12 16:13 | | | | | | | |
| Points : 3 | | | Test Equip. : R3132,ESPC | | | | | | | |
| Detector : PEAK/QP | | | Load Line : 100mm | | | | | | | |
| Polarization : Vertical | | | Comment : Vo = 15.0V , Io = 1.0A | | | | | | | |
| Power Supply : DC 48V | | | | | | | | | | |
| Limit: [CISPR 11] Class A Group 1<3m> | | | | | | | | | | |
|  | | | | | | | <div>Limit(QP) ———</div> <div>Horizontal(PEAK) ———</div> <div>Vertical(PEAK) ———</div> <div>Vertical(QP) ×</div> | | | |
| Frequency [MHz] | MeterReading (QP) [dBuV] | Ant. Type | Antenna Factor [dB/m] | Cable & Preamp [dB] | Level(QP) [dBuV/m] | Angle [°] | Height [cm] | Polar. | Limit [dBuV/m] | Margin [dB] |
| 32.768 | 42.6 | BL | 16.8 | -32.2 | 27.2 | 37 | 103 | Vert. | 50 | 22.8 |
| 203.005 | 48.4 | BL | 8.6 | -31.3 | 25.7 | 204 | 103 | Vert. | 50 | 24.3 |
| 251.857 | 57.5 | BL | 12.6 | -31.1 | 39 | 203 | 154 | Vert. | 57 | 18 |

| DATA SHEET | | Date | 12-Oct-07 |
|------------|--|-----------|------------|
| Model | SFS154815 | Temp. | 25 degreeC |
| Test | EMI Line conduction & Radiated emission | Humid. | 45 %RH |
| | | Tested by | Y.Miyawaki |

1.Conditions

(1)Photograph of Test Set-Up

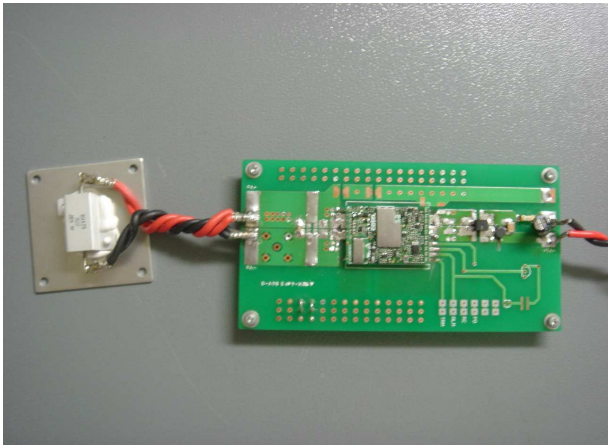
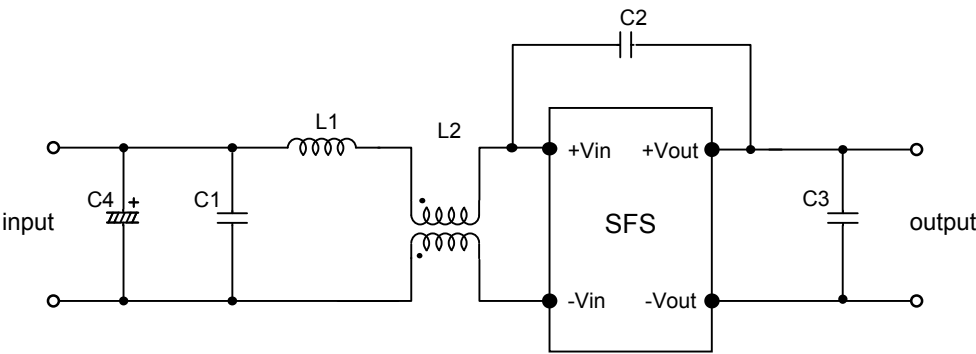


Fig1. Photograph of Test Set-Up

(2)Testing circuitry



- C1: 1 μ F 100V Ceramic capacitor

C2: 2200pF 630V Ceramic capacitor

C3: 0.1 μ F 50V Ceramic capacitor

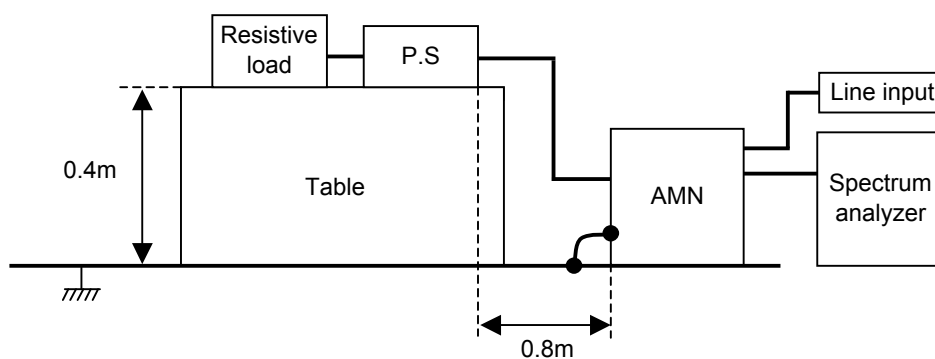
C4: 10 μ F 100V Electric capacitor
- L1: 1 μ H 2.4A Inductor

L2: ZJYS51R5-2PT : TDK

Fig2. Testing circuitry

| DATA SHEET | | Date | 12-Oct-07 |
|------------|--|-----------|------------|
| Model | Circuit used for measurement | Temp. | 25 degreeC |
| Test | EMI Line conduction & Radiated emission | Humid. | 45 %RH |
| | | Tested by | Y.Miyawaki |

1. Line conduction



2. Radiated emission

