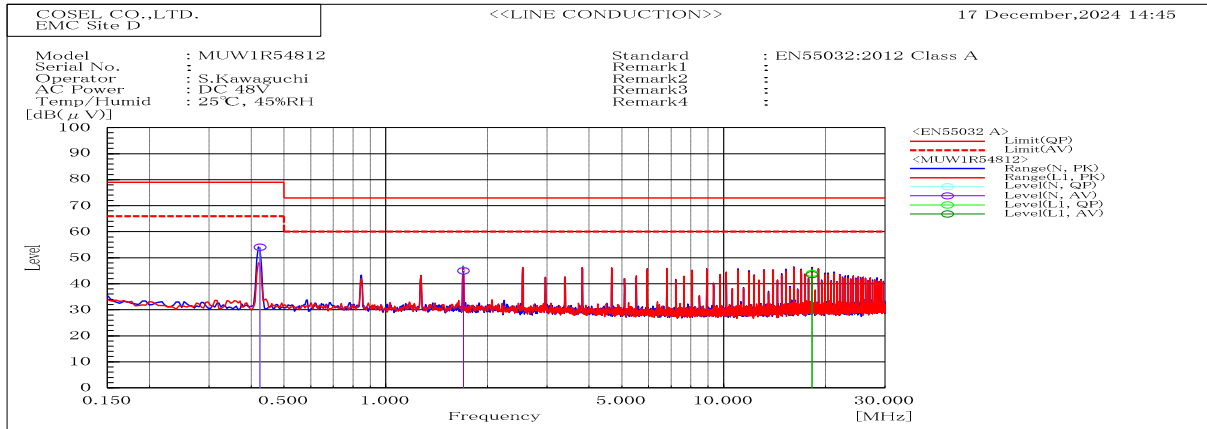
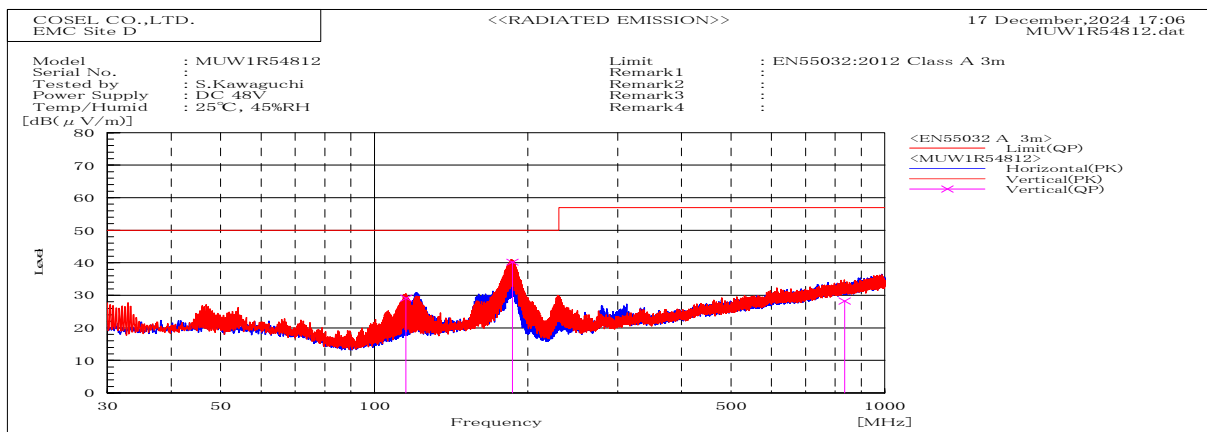


## DATA SHEET

DATA SHEET		Date	05-Mar-25
Model	MUW1R54812	Temp.	25 degreeC
Test	EMI Line conduction & Radiated emission	Humid.	45 %RH
		Tested by	S.Kawaguchi



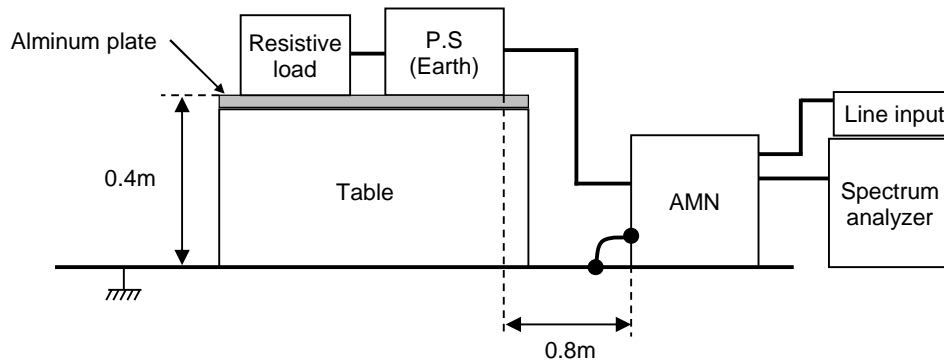
Frequency MHz	Line	Level dB(μV)		Limit dB(μV)		Margin dB		Pass/Fail	Remark
		QP	AV	QP	AV	QP	AV		
18.263	L1	44	43.5	73	60	29	16.5	Pass	
0.425	N	54.2	54	79	66	24.8	12	Pass	
1.699	N	45.2	45	73	60	27.8	15	Pass	



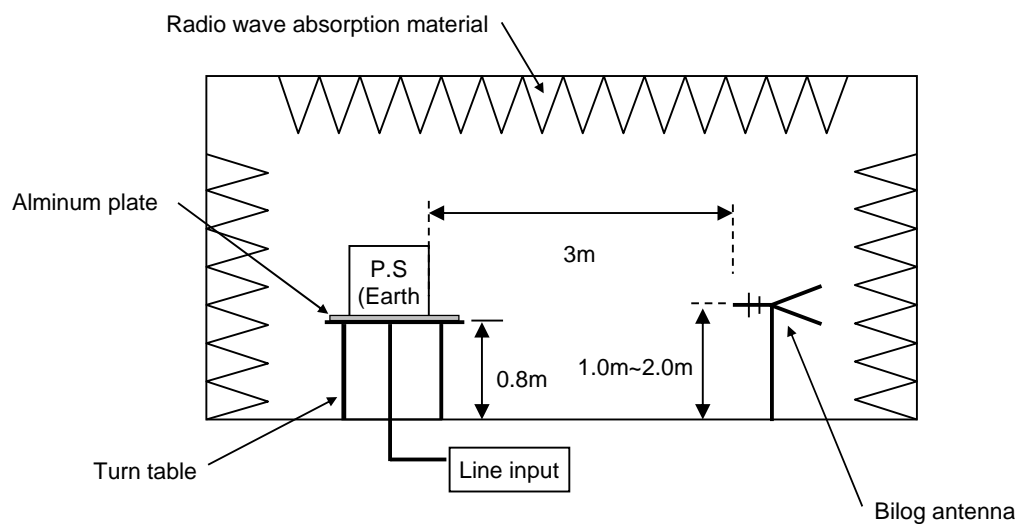
Frequency MHz	Polarization	Stability	Level dB(μV/m)		Limit dB(μV/m)	Margin dB	Pass/Fail	Height cm	Angle deg	Remark
			QP	QP						
186.35	V	Stable	40.2	50	9.8	Pass	101.6	341.4		
115.35	V	Stable	29.1	50	20.9	Pass	100.2	328.4		
835.121	V	Stable	28.3	57	28.7	Pass	101.7	118.5		

DATA SHEET		Date	05-Mar-25
Model	Circuit used for measurement	Temp.	25 degreeC
Test	EMI Line conduction & Radiated emission	Humid.	45 %RH
		Tested by	S.Kawaguchi

### 1. Line conduction



### 2. Radiated emission



## Conditions

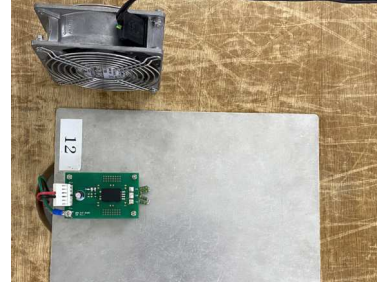
Test : EMI  
Model Name: MUW1R5□□

## ○Photographs of Test Set-Up

### LINE CONDUCTION



### RADIATED EMISSION



## ○Testing circuitry

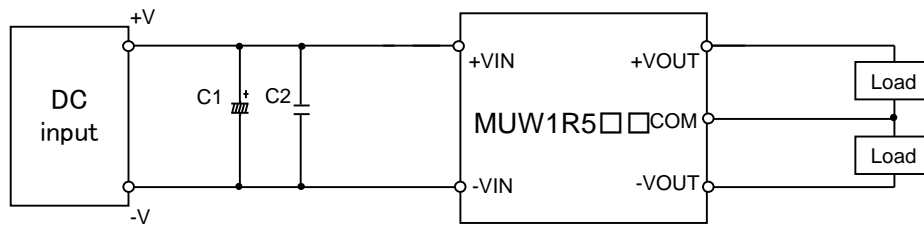


Fig.1 MUW1R505□, MUW1R512□, MUW1R524□ Testing circuitry

- |      |           |                 |   |
|------|-----------|-----------------|---|
| C1 : | MUW1R505□ | 16V 220 $\mu$ F | Electric capacitor (UPWseries NICHICON)                 |
|      | MUW1R512□ | 50V 100 $\mu$ F | Electric capacitor (UPWseries NICHICON)                 |
|      | MUW1R524□ | -               |   |
| C2 : | MUW1R505□ | 16V 22 $\mu$ F  | Ceramic capacitor (GRM31CC71C226M MURATA MANUFACTURING) |
|      | MUW1R512□ | 25V 22 $\mu$ F  | Ceramic capacitor (C3216JB1E226MT TDK)                  |
|      | MUW1R524□ | 50V 10 $\mu$ F  | Ceramic capacitor (C3216X7R1H106KT TDK)                 |

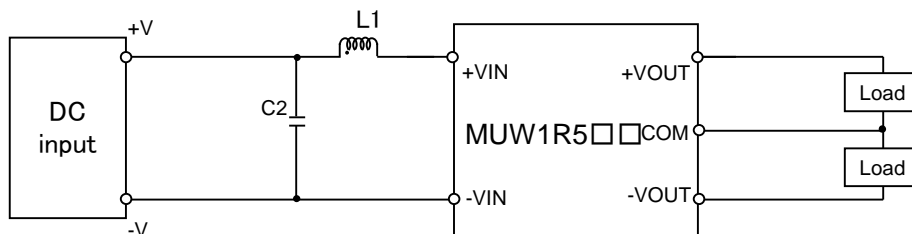


Fig.2 MUW1R548□ Testing circuitry

- |      |           |                  |  |
|------|-----------|------------------|--|
| C2 : | MUW1R548□ | 100V 2.2 $\mu$ F | Ceramic capacitor (C3216X7S2A225KT TDK)        |
| L1 : | MUW1R548□ | 520mA 15 $\mu$ H | Inductor (LQH32PN150MN0L MURATA MANUFACTURING) |