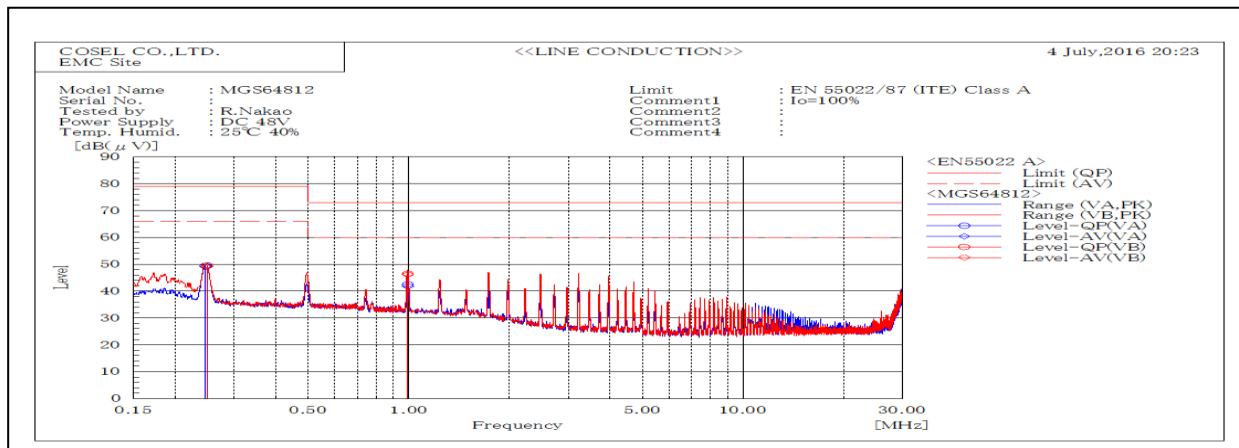


DATA SHEET

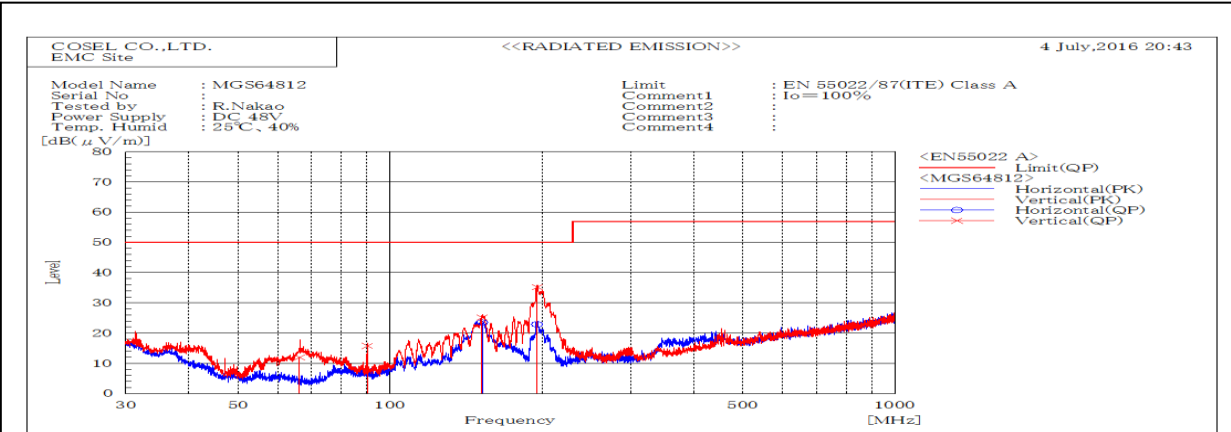
Model MGS64812

Date 14-Jul-16
Temp. 25 degreeC
Humid. 40 %RH
Tested by R.Nakao

Test EMI
Line conduction & Radiated emission

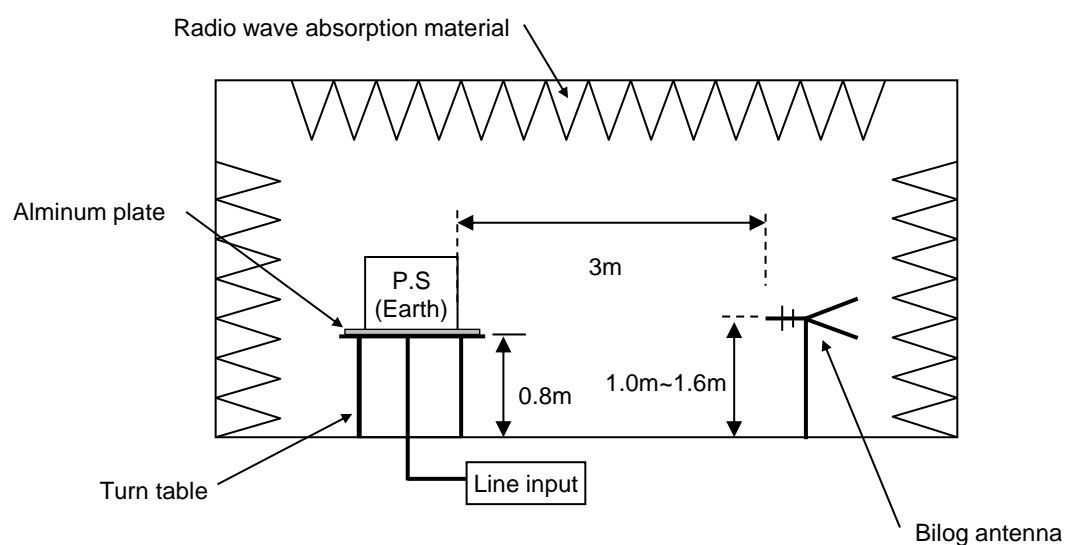


Frequency MHz	Harm	Line Phase	Reading dB(μV)		Factor dB	Level dB(μV)		Limit dB(μV)		Margin dB		Pass/ Fail	Remark
			QP	AV		QP	AV	QP	AV	QP	AV		
0.2488		VB	29.6	29.1	20.0	49.6	49.1	79	66	29.4	16.9	Pass	
0.24652		VA	29.5	29.1	20.0	49.5	49.1	79	66	29.5	16.9	Pass	
0.99375		VB	26.5	26.3	19.9	46.4	46.2	73	60	26.6	13.8	Pass	
0.99309		VA	22.5	21.8	19.9	42.4	41.7	73	60	30.6	18.3	Pass	



Frequency MHz	Polarization	Stability	Reading dB(μV)	Limit dB(μV/m)	Margin dB(μV/m)	Pass/Fail	Height cm	Angle deg	Remark
			QP	QP	QP				
66.280	V	Stable	12.0	50.0	38.0	Pass	129	223	
90.217	V	Stable	15.8	50.0	34.2	Pass	108	83	
152.367	H	Stable	23.5	50.0	26.5	Pass	150	305	
152.293	V	Stable	25.2	50.0	24.8	Pass	106	17	
195.524	H	Stable	22.9	50.0	27.1	Pass	113	77	
195.740	V	Stable	35.2	50.0	14.8	Pass	103	165	

1. Line conduction

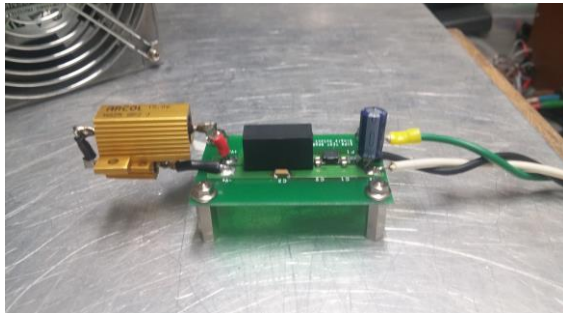


Conditions

Test : EMI
Model Name : MGS6□□

○Photographs of Test Set-Up

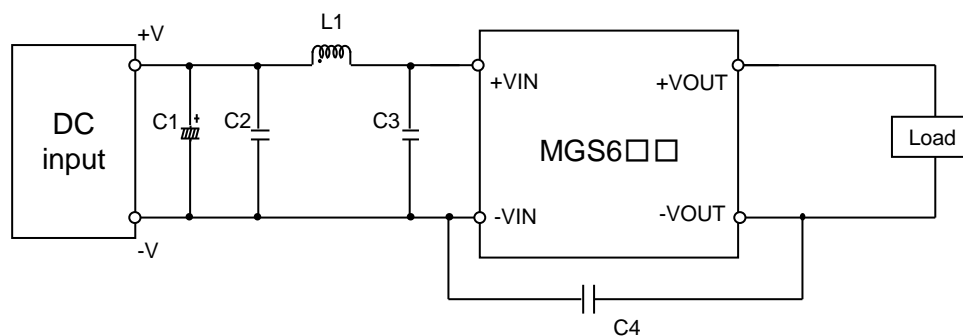
LINE CONDUCTION



RADIATED EMISSION



○Testing circuitry



C1 :	MGS605□□	25V 220 μ F	Electric capacitor (LXZseries NIPPON CHEMI-CON)
	MGS612□□	50V 100 μ F	Electric capacitor (LXZseries NIPPON CHEMI-CON)
	MGS624□□	—	
	MGS648□□	—	
C2 :	MGS605□□	16V 22 μ F	Ceramic capacitor (GRM31CC71C226K MURATA MANUFACTURING)
	MGS612□□	25V 10 μ F	Ceramic capacitor (GRM31CR71E106K MURATA MANUFACTURING)
	MGS624□□	50V 4.7 μ F	Ceramic capacitor (GRM31CR71H475K MURATA MANUFACTURING)
	MGS648□□	100V 2.2 μ F	Ceramic capacitor (GRM31CC72A225K MURATA MANUFACTURING)
C3 :	MGS605□□	—	
	MGS612□□	25V 10 μ F	Ceramic capacitor (GRM31CR71E106K MURATA MANUFACTURING)
	MGS624□□	50V 4.7 μ F	Ceramic capacitor (GRM31CR71H475K MURATA MANUFACTURING)
	MGS648□□	100V 2.2 μ F	Ceramic capacitor (GRM31CC72A225K MURATA MANUFACTURING)
C4 :	MGS605□□	2kV 470pF	Ceramic capacitor (GR442QR73D471K MURATA MANUFACTURING)
	MGS612□□	2kV 470pF	Ceramic capacitor (GR442QR73D471K MURATA MANUFACTURING)
	MGS624□□	2kV 470pF	Ceramic capacitor (GR442QR73D471K MURATA MANUFACTURING)
	MGS648□□	2kV 1000pF	Ceramic capacitor (GR442QR73D102K MURATA MANUFACTURING)
L1 :	MGS605□□	3000mA 1.5 μ H	Inductor(LQH5BPN1R5NT0 MURATA MANUFACTURING)
	MGS612□□	2600mA 2.2 μ H	Inductor(LQH5BPN2R2NT0 MURATA MANUFACTURING)
	MGS624□□	1600mA 10 μ H	Inductor(LQH5BPN100MT0 MURATA MANUFACTURING)
	MGS648□□	1050mA 22 μ H	Inductor(LQH5BPN220MT0 MURATA MANUFACTURING)