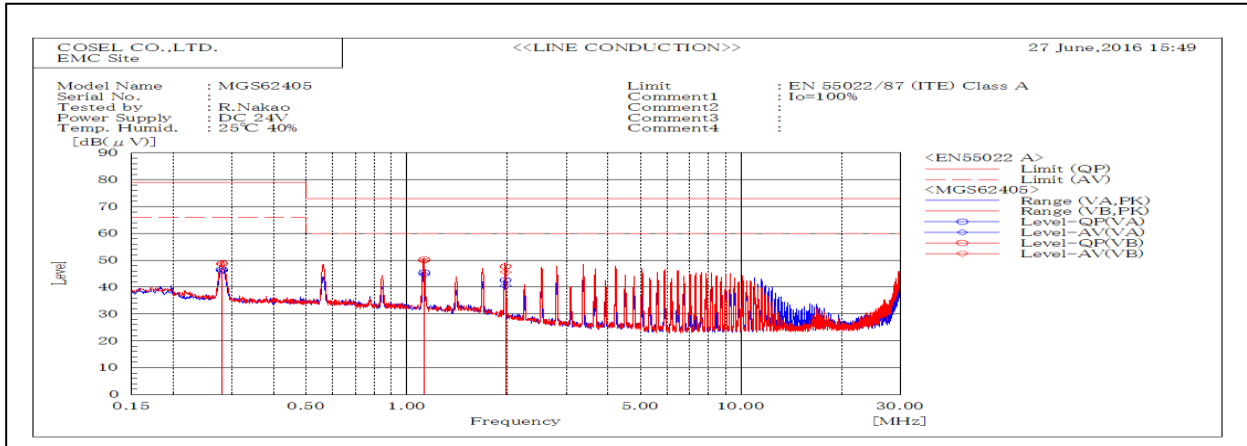
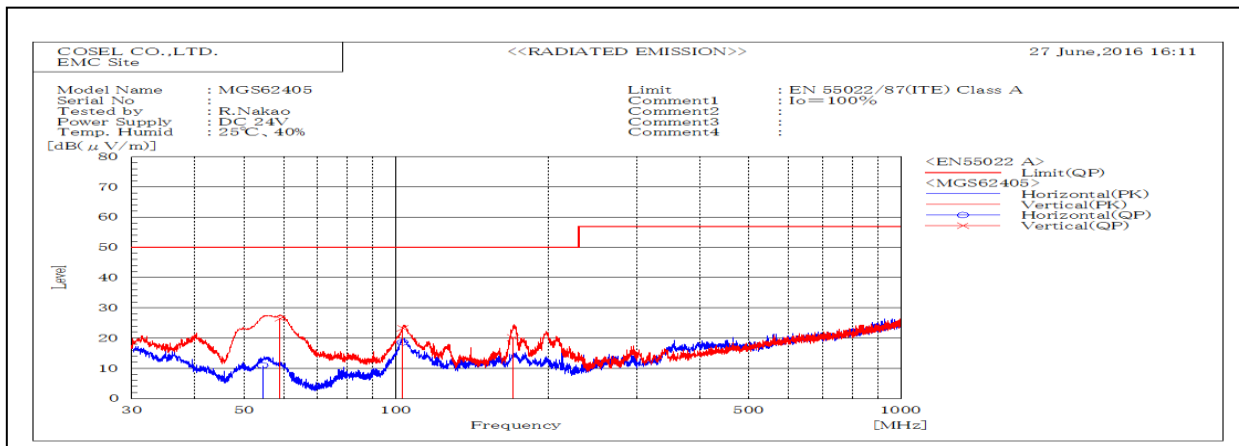


DATA SHEET		Date	14-Jul-16
Model	MGS62405	Temp.	25 degreeC
Test	EMI Line conduction & Radiated emission	Humid.	40 %RH
		Tested by	R.Nakao



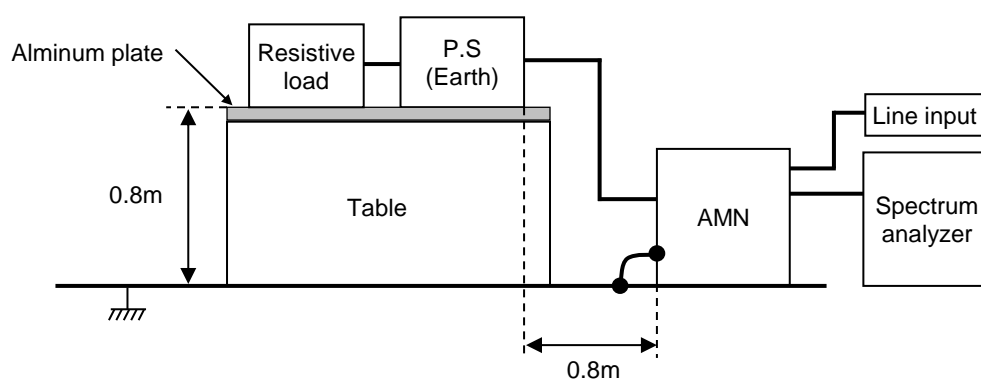
Frequency MHz	Harm	Line Phase	Reading dB(μV)		Factor dB	Level dB(μV)		Limit dB(μV)		Margin dB		Pass/ Fail	Remark
			QP	AV		QP	AV	QP	AV	QP	AV		
0.28036		VB	28.8	28.6	20.0	48.8	48.6	79	66	30.2	17.4	Pass	
0.27985		VA	26.6	26.1	20.0	46.6	46.1	79	66	32.4	19.9	Pass	
1.12677		VB	30.4	29.8	19.9	50.3	49.7	73	60	22.7	10.3	Pass	
1.12681		VA	25.5	24.8	19.9	45.4	44.7	73	60	27.6	15.3	Pass	
1.97475		VA	22.6	20.4	20.0	42.6	40.4	73	60	30.4	19.6	Pass	
1.97493		VB	27.7	25.6	20.0	47.7	45.6	73	60	25.3	14.4	Pass	



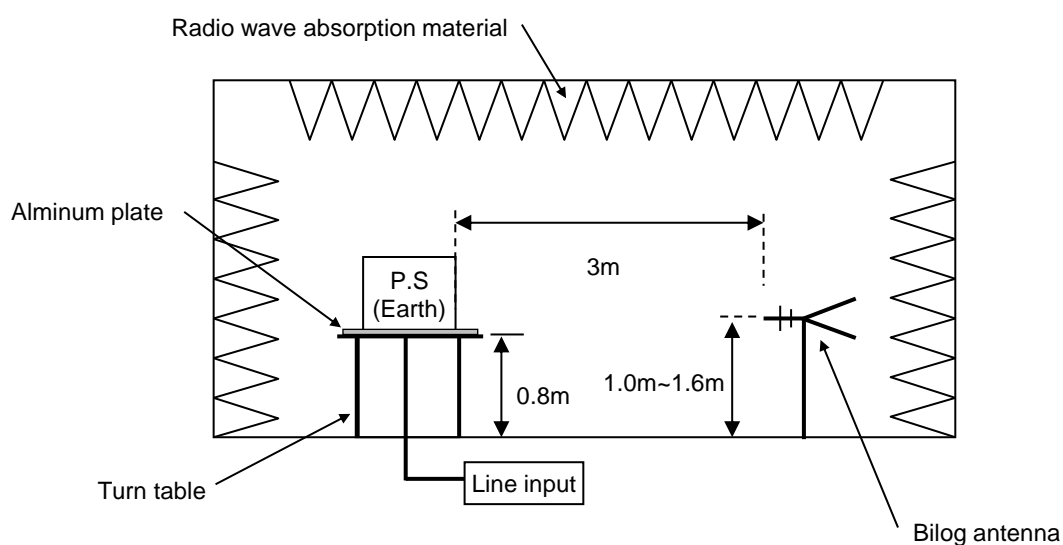
Frequency MHz	Polarization	Stability	Reading dB(μV)	Limit dB(μV/m)	Margin dB(μV/m)	Pass/Fail	Height cm	Angle deg	Remark
			QP	QP	QP				
54.455	H	Stable	10.9	50.0	39.1	Pass	139	169	
59.017	V	Stable	26.5	50.0	23.5	Pass	121	35	
103.147	H	Stable	18.6	50.0	31.4	Pass	136	196	
103.240	V	Stable	23.2	50.0	26.8	Pass	104	43	
170.556	V	Stable	20.2	50.0	29.8	Pass	125	340	

DATA SHEET		Date	14-Jul-16
Model	Circuit used for measurement	Temp.	25 degreeC
Test	EMI Line conduction & Radiated emission	Humid.	40 %RH
		Tested by	R.Nakao

1. Line conduction



2. Radiated emission

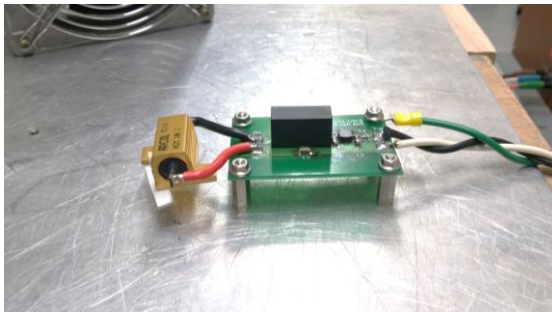


Conditions

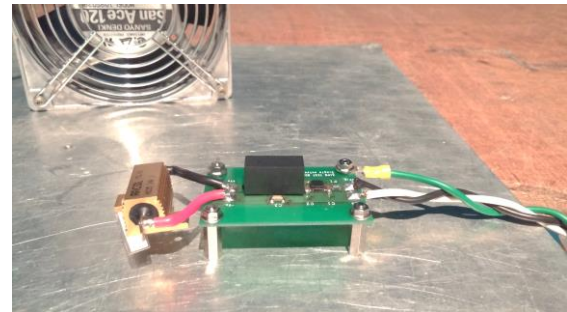
Test : EMI
Model Name : MGS6□□

○Photographs of Test Set-Up

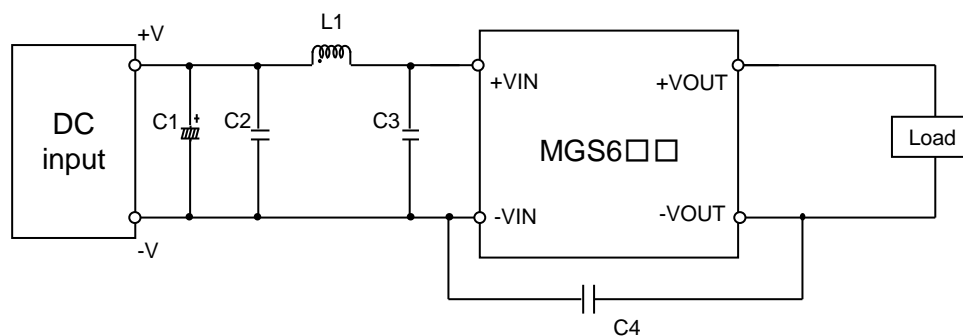
LINE CONDUCTION



RADIATED EMISSION



○Testing circuitry



C1 :	MGS605□□	25V 220 μ F	Electric capacitor (LXZseries NIPPON CHEMI-CON)
	MGS612□□	50V 100 μ F	Electric capacitor (LXZseries NIPPON CHEMI-CON)
	MGS624□□	—	
	MGS648□□	—	
C2 :	MGS605□□	16V 22 μ F	Ceramic capacitor (GRM31CC71C226K MURATA MANUFACTURING)
	MGS612□□	25V 10 μ F	Ceramic capacitor (GRM31CR71E106K MURATA MANUFACTURING)
	MGS624□□	50V 4.7 μ F	Ceramic capacitor (GRM31CR71H475K MURATA MANUFACTURING)
	MGS648□□	100V 2.2 μ F	Ceramic capacitor (GRM31CC72A225K MURATA MANUFACTURING)
C3 :	MGS605□□	—	
	MGS612□□	25V 10 μ F	Ceramic capacitor (GRM31CR71E106K MURATA MANUFACTURING)
	MGS624□□	50V 4.7 μ F	Ceramic capacitor (GRM31CR71H475K MURATA MANUFACTURING)
	MGS648□□	100V 2.2 μ F	Ceramic capacitor (GRM31CC72A225K MURATA MANUFACTURING)
C4 :	MGS605□□	2kV 470pF	Ceramic capacitor (GR442QR73D471K MURATA MANUFACTURING)
	MGS612□□	2kV 470pF	Ceramic capacitor (GR442QR73D471K MURATA MANUFACTURING)
	MGS624□□	2kV 470pF	Ceramic capacitor (GR442QR73D471K MURATA MANUFACTURING)
	MGS648□□	2kV 1000pF	Ceramic capacitor (GR442QR73D102K MURATA MANUFACTURING)
L1 :	MGS605□□	3000mA 1.5 μ H	Inductor(LQH5BPN1R5NT0 MURATA MANUFACTURING)
	MGS612□□	2600mA 2.2 μ H	Inductor(LQH5BPN2R2NT0 MURATA MANUFACTURING)
	MGS624□□	1600mA 10 μ H	Inductor(LQH5BPN100MT0 MURATA MANUFACTURING)
	MGS648□□	1050mA 22 μ H	Inductor(LQH5BPN220MT0 MURATA MANUFACTURING)