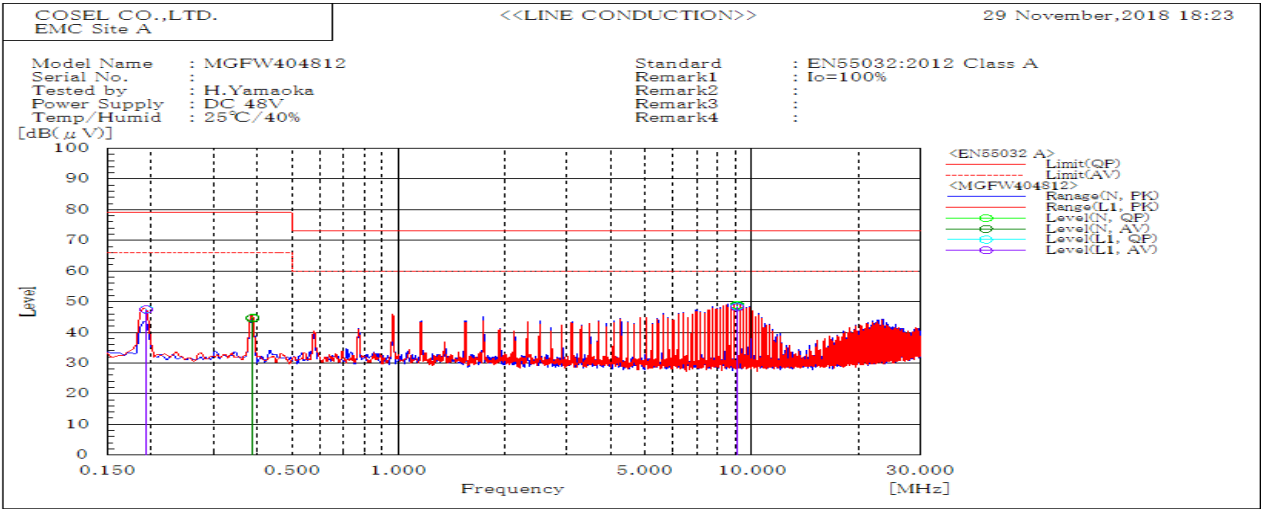
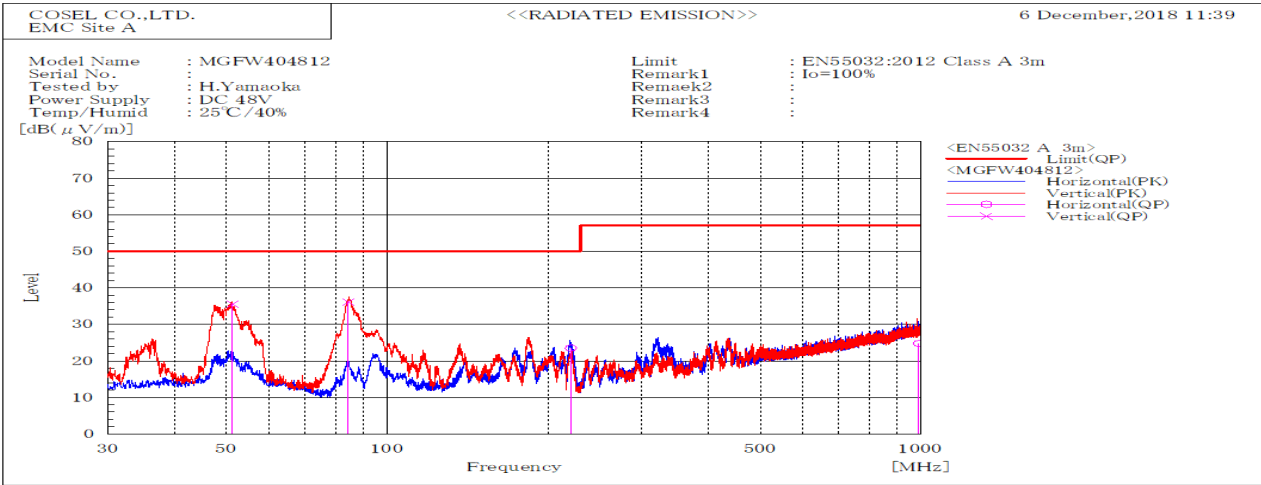


DATA SHEET		Date	15-Jan-19
Model	MGFW404812	Temp.	25 degreeC
Test	EMI Line conduction & Radiated emission	Humid.	40 %RH
		Tested by	H.Yamaoka



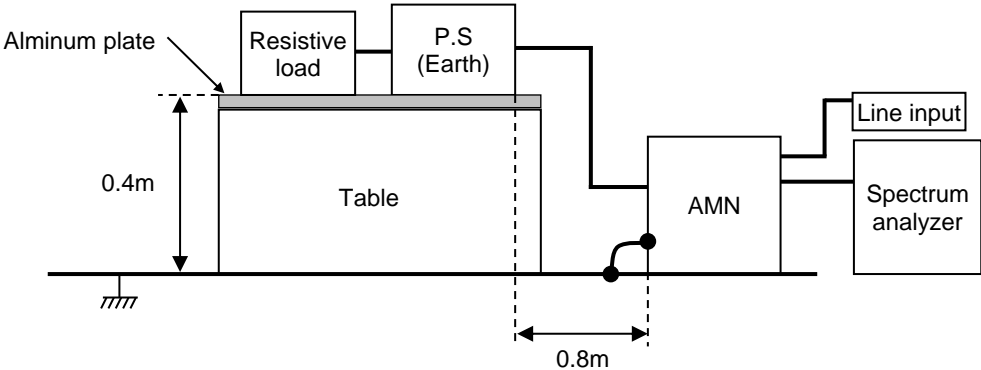
Frequency MHz	Line	Level dB(μV)		Limit dB(μV)		Margin dB		Pass/Fail	Remark
		QP	AV	QP	AV	QP	AV		
9.085	L1	48.5	48.2	73	60	24.5	11.8	Pass	
0.194	L1	47.5	47.4	79	66	31.5	18.6	Pass	
9.083	N	49	48.7	73	60	24	11.3	Pass	
0.387	N	44.8	44.6	79	66	34.2	21.4	Pass	



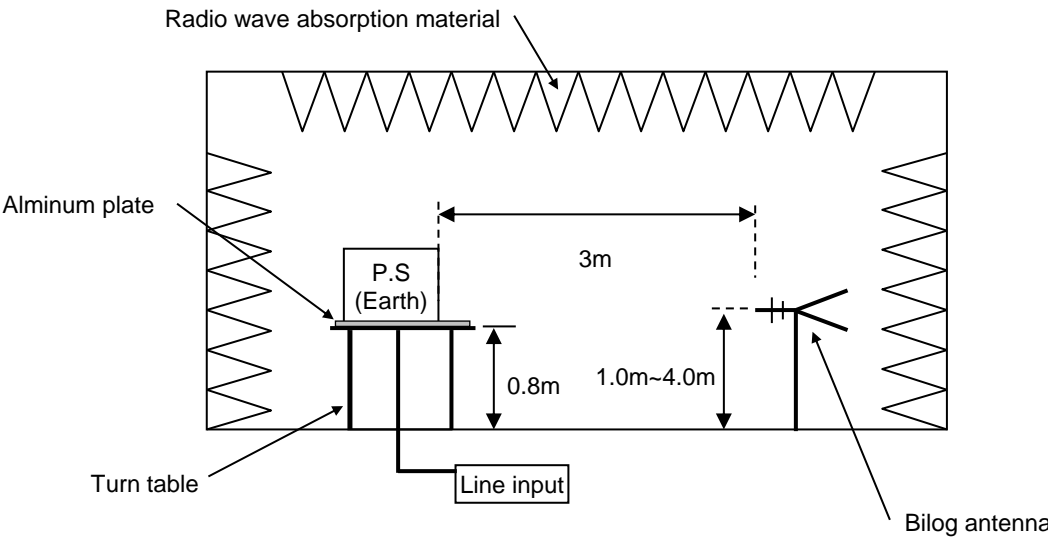
Frequency MHz	Polarization	Stability	Level dB(μV/m)	Limit dB(μV/m)	Margin dB	Pass/Fail	Height cm	Angle deg	Remark
			QP	QP	QP				
989.891	H	Stable	24.8	57	32.2	Pass	191.9	335.5	
220.834	H	Stable	23.5	50	26.5	Pass	140.7	211.5	
84.627	V	Stable	36.1	50	13.9	Pass	100	127.9	
51.314	V	Stable	35.6	50	14.4	Pass	100.2	325.8	

DATA SHEET		Date	15-Jan-19
Model	Circuit used for measurement	Temp.	25 degreeC
Test	EMI Line conduction & Radiated emission	Humid.	40 %RH
		Tested by	H.Yamaoka

1. Line conduction



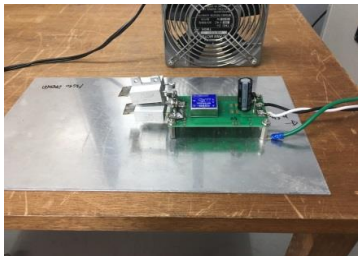
2. Radiated emission



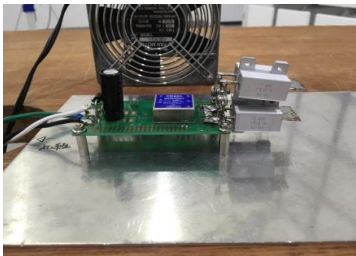
Conditions

Test : EMI  
Model Name : MGFW40□□

○Photographs of Test Set-Up  
LINE CONDUCTION



RADIATED EMISSION



○Testing circuitry

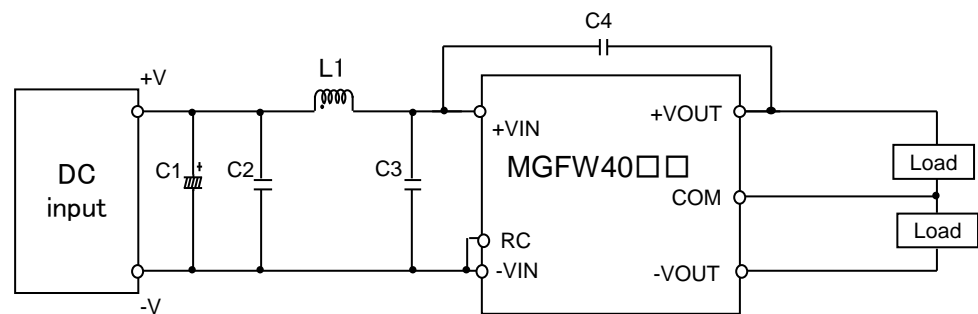


Fig.1 Testing circuitry

C1 :	MGFW4005□□	10V 4700μ F Electrolytic capacitor (UHWseries NICHICON CORPORATION)
	MGFW4024□□	63V 220μ F Electrolytic capacitor (KYseries NIPPON CHEMI-CON)
	MGFW4048□□	100V 220μ F Electrolytic capacitor (KYseries NIPPON CHEMI-CON)
C2 :	MGFW4005□□	16V 22μ F Ceramic capacitor (GRM32ER71C226K MURATA MANUFACTURING)
	MGFW4024□□	50V 10μ F Ceramic capacitor (GRM32ER71H106K MURATA MANUFACTURING)
	MGFW4048□□	100V 4.7μ F Ceramic capacitor (HMK325AC7475K TAIYOU YUDEN)
C3 :	MGFW4005□□	16V 22μ F Ceramic capacitor (GRM32ER71C226K MURATA MANUFACTURING)
	MGFW4024□□	50V 10μ F Ceramic capacitor (GRM32ER71H106K MURATA MANUFACTURING)
	MGFW4048□□	100V 4.7μ F Ceramic capacitor (HMK325AC7475K TAIYOU YUDEN)
C4 :	MGFW4005□□	2kV 1000pF Ceramic capacitor (GR431BR7LA102K MURATA MANUFACTURING)
	MGFW4024□□	2kV 1000pF Ceramic capacitor (GR431BR7LA102K MURATA MANUFACTURING)
	MGFW4048□□	2kV 1000pF Ceramic capacitor (GR431BR7LA102K MURATA MANUFACTURING)
L1 :	MGFW4005□□	15.0A 1.0μ H Inductor (SRP7050TA-1R0M BOURNS)
	MGFW4024□□	12.0A 1.8μ H Inductor (SRP7050TA-1R8M BOURNS)
	MGFW4048□□	6.0A 5.6μ H Inductor (SRP7050TA-5R6M BOURNS)