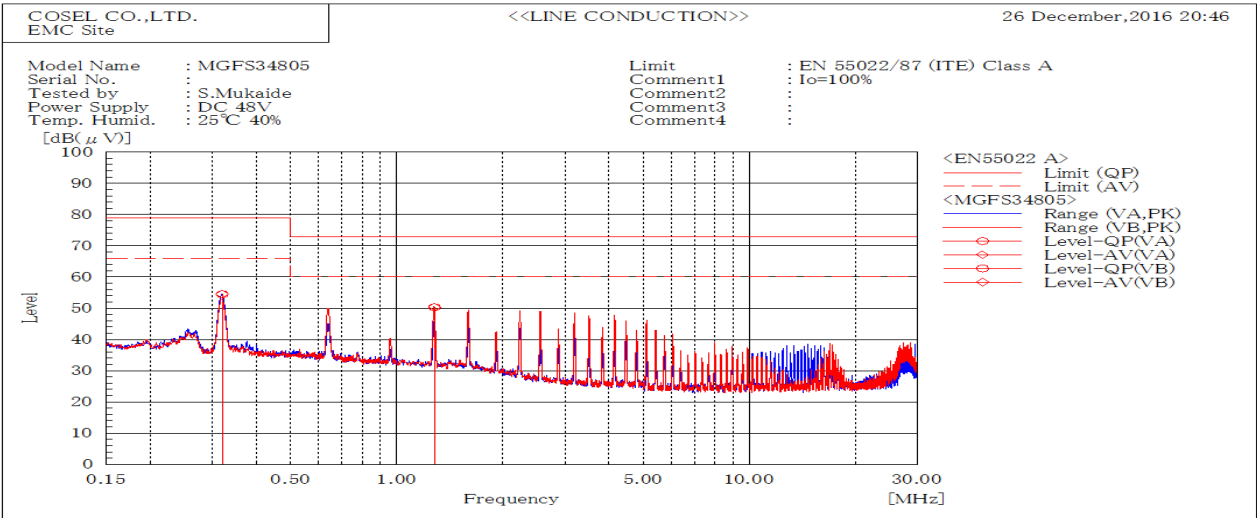
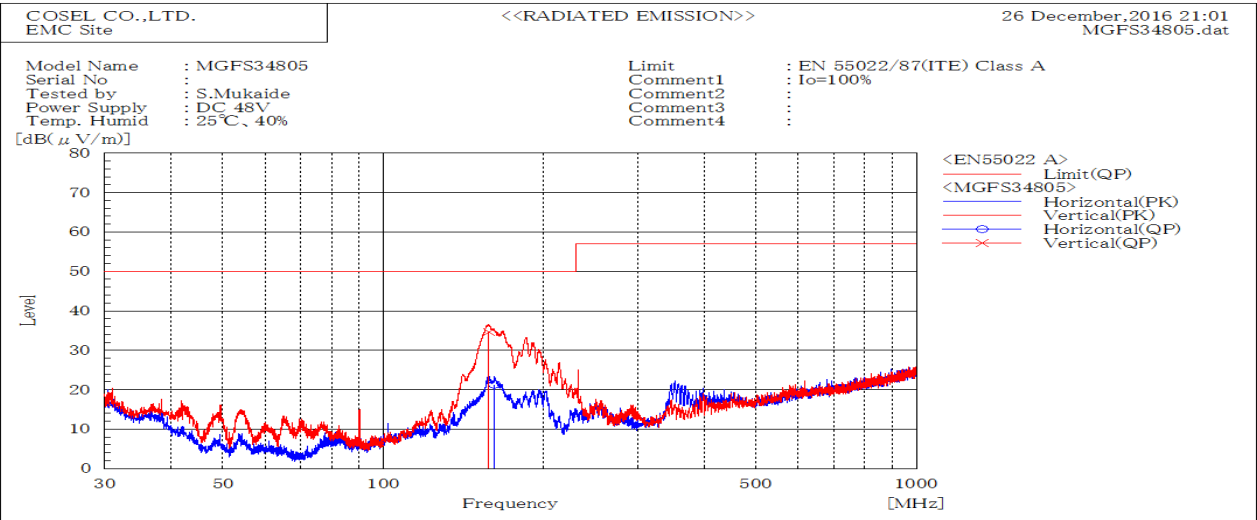


| DATA SHEET |  | Date      | 06-Jan-17  |
|------------|--|-----------|------------|
| Model      | MGFS34805                                  | Temp.     | 25 degreeC |
| Test       | EMI<br>Line conduction & Radiated emission | Humid.    | 40 %RH     |
|            |  | Tested by | S.Mukaide  |



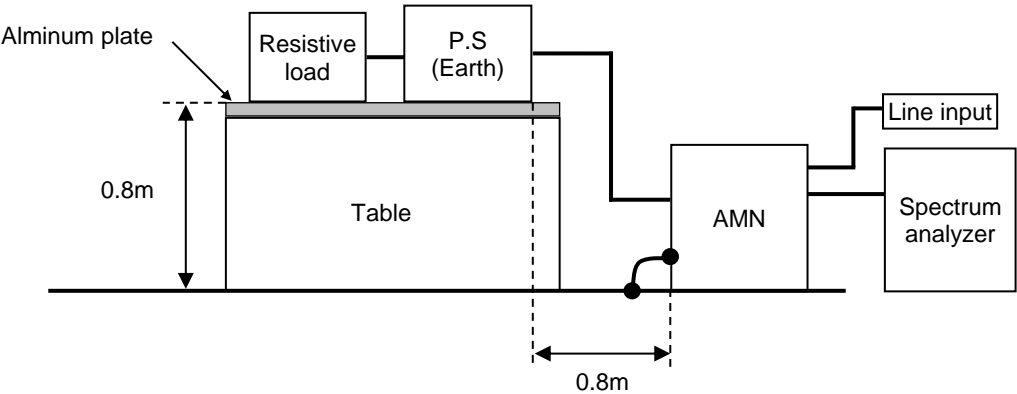
| Frequency<br>MHz | Line<br>Phase | Level<br>dB(μV) |      | Limit<br>dB(μV) |    | Margin<br>dB |      | Pass/Fail | Remark |
|------------------|---------------|-----------------|------|-----------------|----|--------------|------|-----------|--------|
|                  |               | QP              | AV   | QP              | AV | QP           | AV   |           |        |
| 0.31989          | VA            | 54.5            | 54.6 | 79              | 66 | 24.5         | 11.4 | Pass      |        |
| 1.27972          | VB            | 50.3            | 50.4 | 73              | 60 | 22.7         | 9.6  | Pass      |        |



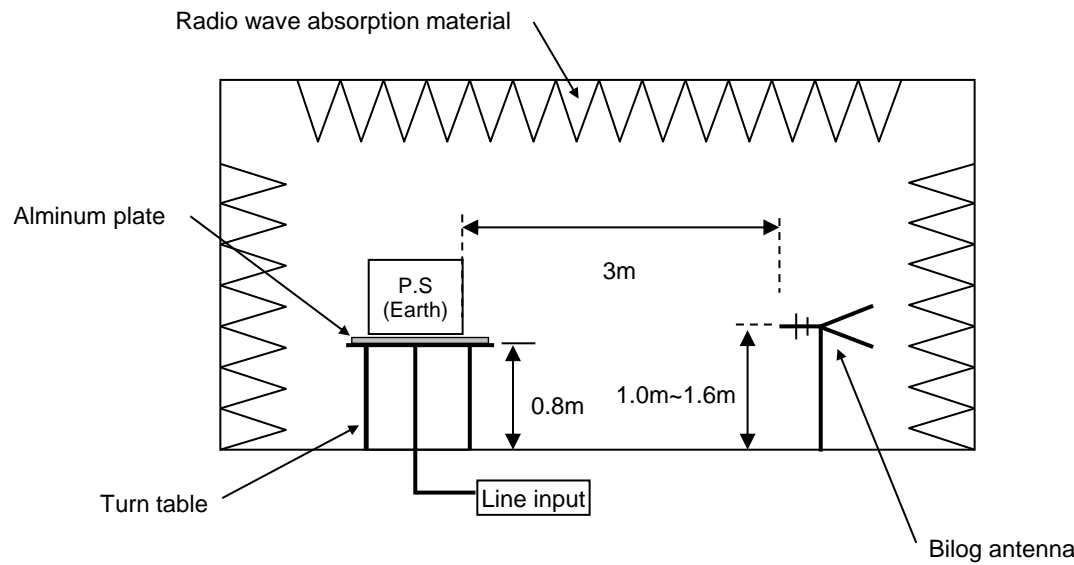
| Frequency<br>MHz | Polarization | Stability | Reading<br>dB(μV) | Limit<br>dB(μV/m) | Margin<br>dB(μV/m) | Pass/Fail | Height<br>cm | Angle<br>deg | Remark |
|------------------|--------------|-----------|-------------------|-------------------|--------------------|-----------|--------------|--------------|--------|
|                  |              |           | QP                | QP                | QP                 |           |              |              |        |
| 157.642          | V            | Stable    | 34.6              | 50.0              | 15.4               | Pass      | 122          | 103          |        |
| 161.620          | H            | Stable    | 21.3              | 50.0              | 28.7               | Pass      | 141          | 97           |        |

| DATA SHEET |  | Date      | 06-Jan-17  |
|------------|--|-----------|------------|
| Model      | Circuit used for measurement               | Temp.     | 25 degreeC |
| Test       | EMI<br>Line conduction & Radiated emission | Humid.    | 40 %RH     |
|            |  | Tested by | S.Mukaide  |

1. Line conduction



2. Radiated emission

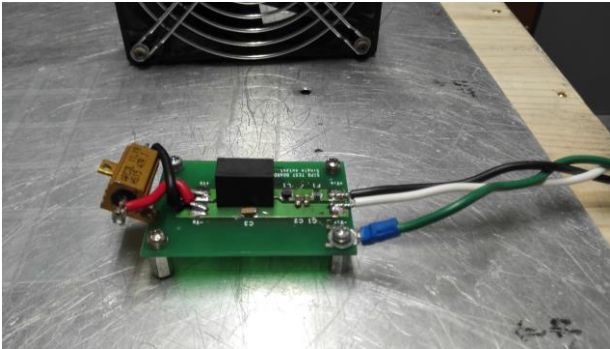


Conditions

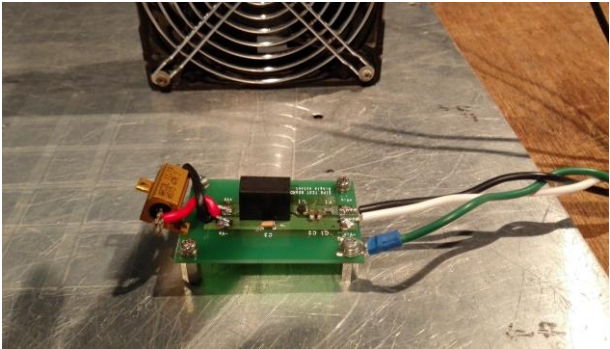
Test : EMI  
Model Name : MGFS3□□

○Photographs of Test Set-Up

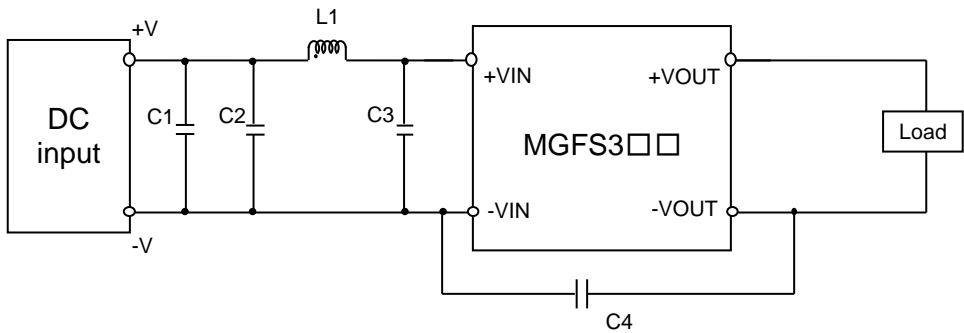
LINE CONDUCTION



RADIATED EMISSION



○Testing circuitry



- |      |           |  |
|------|-----------|--|
| C1 : | MGFS324□□ | 50V 4.7 $\mu$ F Ceramic capacitor (GRM31CR71H475K MURATA MANUFACTURING)  |
|      | MGFS348□□ | 100V 2.2 $\mu$ F Ceramic capacitor (GRM31CR72A225K MURATA MANUFACTURING) |
| C2 : | MGFS324□□ | 50V 4.7 $\mu$ F Ceramic capacitor (GRM31CR71H475K MURATA MANUFACTURING)  |
|      | MGFS348□□ | 100V 2.2 $\mu$ F Ceramic capacitor (GRM31CR72A225K MURATA MANUFACTURING) |
| C3 : | MGFS324□□ | 50V 4.7 $\mu$ F Ceramic capacitor (GRM31CR71H475K MURATA MANUFACTURING)  |
|      | MGFS348□□ | 100V 2.2 $\mu$ F Ceramic capacitor (GRM31CR72A225K MURATA MANUFACTURING) |
| C4 : | MGFS324□□ | 2kV 470pF Ceramic capacitor (GR442QR73D471K MURATA MANUFACTURING)        |
|      | MGFS348□□ | 2kV 1000pF Ceramic capacitor (GR442QR73D102K MURATA MANUFACTURING)       |
| L1 : | MGFS324□□ | 900mA 10 $\mu$ H Inductor(LQH32PN100MNCL MURATA MANUFACTURING)           |
|      | MGFS348□□ | 550mA 22 $\mu$ H Inductor(LQH32PN220MNCL MURATA MANUFACTURING)           |