

Date : May.9,2008

Temperature increase of main components: 主要部品温度上昇

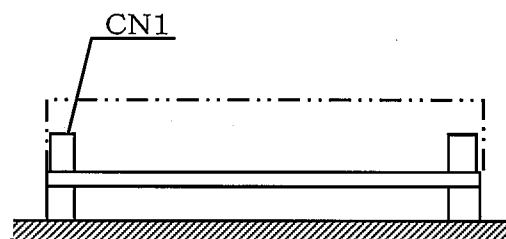
Model: LGA50A

1. Conditions

- (1) Input : AC 85 ~ 132 [V]
 (2) Output : Rated output
 (3) Mounting method : Shown as Fig.1.1

2. Result

No.	Parts name	Symbol No.	Increase (ΔT)						Rated temp. [°C]	Reference
			[deg]							
			5V	12V	24V					
1	Line Filter	L101	48	45	48				120	
2	Rectifier(Input)	SS101	58	60	64				150	Junction Temp.
3	Switching Transistor	TR201	67	59	69				150	Junction Temp.
4	Transformer	T101	47	45	50				130	
5	Rectified Diode(Output)	SS501	78	63	55				150	Junction Temp.
6	Output Choke	L507	54	38	41				130	
7	Input Capacitor	C111	26	27	31				105	
8	Input Capacitor	C112	36	37	42				105	
9	Output Capacitor	C506	32	20	—				105	
10	Output Capacitor	C507	35	23	22				105	
11										
12										
13										
14										
15										
16										
17										
18										
19										
20										



(Side view)

Fig.1.1 Mounting method
(Normal position)

*All information presented herein are not guaranteed.

*本資料は参考資料であり、その内容を保証するものではありません。