

Date : May.2,2008

Temperature increase of main components: 主要部品温度上昇

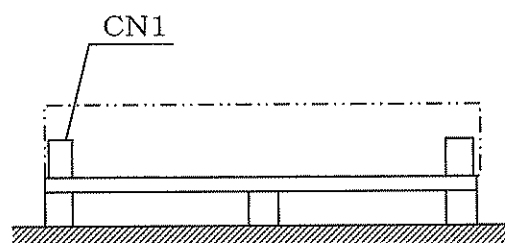
Model: LGA240A

1. Conditions

- (1) Input :AC 85 ~ 132 [V]
 (2) Output :Rated output
 (3) Mounting method :Shown as Fig.1.1

2. Result

| No. | Parts name | Symbol No. | Increase (ΔT) | | | | | | Rated temp. [°C] | Reference |
|-----|-------------------------|------------|-------------------------|--|--|--|--|--|------------------|----------------|
| | | | [deg] | | | | | | | |
| | | | 24V | | | | | | | |
| 1 | Line Filter | L101 | 33 | | | | | | 120 | |
| 2 | Rectifier(Input) | SS101 | 80 | | | | | | 150 | Junction Temp. |
| 3 | Thyristor | SCR101 | 72 | | | | | | 125 | Junction Temp. |
| 4 | Input Capacitor | C111 | 36 | | | | | | 105 | |
| 5 | Input Capacitor | C112 | 40 | | | | | | 105 | |
| 6 | Input Capacitor | C113 | 33 | | | | | | 105 | |
| 7 | Transformer | T101 | 64 | | | | | | 130 | |
| 8 | Switching Transistor | TR201 | 73 | | | | | | 150 | Junction Temp. |
| 9 | Rectified Diode(Output) | SS501 | 83 | | | | | | 150 | Junction Temp. |
| 10 | Output Choke | L507 | 67 | | | | | | 130 | |
| 11 | Output Capacitor | C506 | 32 | | | | | | 105 | |
| 12 | Output Capacitor | C507 | 40 | | | | | | 105 | |
| 13 | Output Capacitor | C508 | 33 | | | | | | 105 | |
| 14 | | | | | | | | | | |
| 15 | | | | | | | | | | |
| 16 | | | | | | | | | | |
| 17 | | | | | | | | | | |
| 18 | | | | | | | | | | |
| 19 | | | | | | | | | | |
| 20 | | | | | | | | | | |



(Side view)

Fig.1.1 Mounting method
(Normal position)

*All information presented herein are not guaranteed.

*本資料は参考資料であり、その内容を保証するものではありません。