

Jun.10,2011

Temperature increase of main components: 主要部品温度上昇

Cosel.co.,ltd.

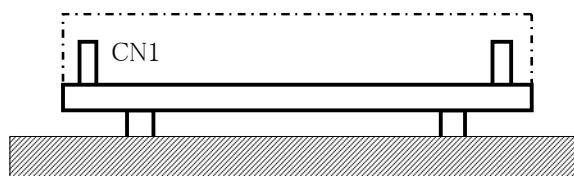
Model: LGA100A

## 1. Conditions

- (1) Input :AC 85 ~ 132 [V]  
 (2) Output :Rated output  
 (3) Mounting method :Shown as Fig.1.1

## 2. Result

No.	Parts name	Symbol No.	Increase ( $\Delta T$ )						Rated temp. [°C]	Reference
			[deg]							
			3.3V	15V	48V					
1	Line Filter	L101	31	52	50				120	
2	Rectifier(Input)	SS101	57	68	64				150	Junction Temp.
3	Thyristor	SCR101	47	56	60				125	Junction Temp.
4	Input Capacitor	C111	23	35	35				105	
5	Input Capacitor	C112	27	39	37				105	
6	Transformer	T101	43	56	58				130	
7	Switching Transistor	TR201	57	61	58				150	Junction Temp.
8	Transformer	SS501	74	64	57				150	Junction Temp.
9	Output Choke	L507	59	42	41				130	
10	Output Capacitor	C506	32	25	27				105	
11	Output Capacitor	C507	34	24	22				105	
12	Output Capacitor	C508	32	21	–				105	
13										
14										
15										
16										
17										
18										
19										
20										



(Side view)

Fig.1.1 Mounting method  
(Normal position)

\* All information presented herein are not guaranteed.

※ 本資料は参考資料であり、その内容を保証するものではありません。