

Temperature increase of main components: 主要部品温度上昇

LFP240F (Convection)

1. Conditions

- (1) Input : AC 85 ~ 264 [V]
 (2) Output : Rated output *Derating is required at AC85 - 90[V] input.
 (3) Mounting method : Shown as Fig.1.1

2. Result

No.	Parts name	Symbol No.	Increase (ΔT)				Rated temp. [°C]	Reference
			[deg]					
			24V	30V	36V	48V		
1	Line filter	L101	58	56	56	54	120	
2	Line filter	L102	48	48	48	41	120	
3	Rectifier(Input)	SS101	76	76	74	74	150	Junction Temp.
4	Inrush Current Limiting Thyristor	SCR101	77	77	77	76	150	Junction Temp.
5	Choke coil(PFC)	L104	67	66	66	66	130	
6	Input capacitor	C128	37	33	32	32	105	
7	Rectified diode(PFC)	SS102	62	59	57	55	150	Junction Temp.
8	Transistor(PFC)	TR101	64	63	60	58	150	Junction Temp.
9	Switching transistor	TR201	67	70	69	70	150	Junction Temp.
10	Transformer	T201	60	60	57	60	130	
11	Rectified Diode(Output)	SS502	75	73	66	60	150	Junction Temp.
12	Output Choke	L507	57	55	53	45	130	
13	Output Capacitor	C513	27	24	25	23	105	
14								
15								
16								
17								
18								
19								
20								

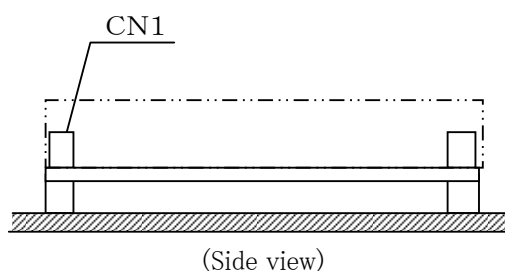


Fig.1.1 Mounting method
(Normal position)

*All information presented herein are not guaranteed.

*本資料は参考資料であり、その内容を保証するものではありません。

Temperature increase of main components: 主要部品温度上昇

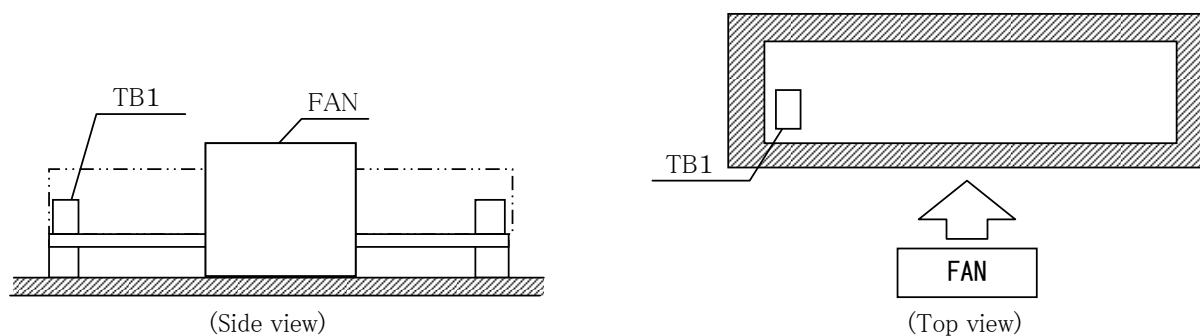
LFP240F (Forced air)

1. Conditions

- (1) Input : AC 85 ~ 264 [V]
 (2) Output : Rated output *Derating is required at AC85 - 90[V] input.
 (3) Mounting method : Shown as Fig.1.1

2. Result

No.	Parts name	Symbol No.	Increase (ΔT)				Rated temp. [°C]	Reference
			[deg]					
			24V	30V	36V	48V		
1	Line filter	L101	35	33	33	31	120	
2	Line filter	L102	29	32	32	25	120	
3	Rectifier(Input)	SS101	42	42	40	40	150	Junction Temp.
4	Inrush Current Limiting Thyristor	SCR101	47	47	47	46	150	Junction Temp.
5	Choke coil(PFC)	L104	41	40	40	40	130	
6	Input capacitor	C128	11	7	10	11	105	
7	Rectified diode(PFC)	SS102	30	27	25	26	150	Junction Temp.
8	Transistor(PFC)	TR101	33	32	30	29	150	Junction Temp.
9	Switching transistor	TR201	46	49	48	49	150	Junction Temp.
10	Transformer	T201	36	36	33	36	130	
11	Rectified Diode(Output)	SS502	60	58	53	54	150	Junction Temp.
12	Output Choke	L507	22	20	18	10	130	
13	Output Capacitor	C513	6	3	4	2	105	
14								
15								
16								
17								
18								
19								
20								

Fig.1.1 Mounting method
(Normal position)

*All information presented herein are not guaranteed.

*本資料は参考資料であり、その内容を保証するものではありません。