

Temperature increase of main components: 主要部品温度上昇

LFP150F

1. Conditions

- (1) Input : AC 85 ~ 264 [V]
 (2) Output : Rated output *Derating is required at AC85 - 90[V] input.
 (3) Mounting method : Shown as Fig.1.1

2. Result

No.	Parts name	Symbol No.	Increase (ΔT)			Rated temp. [°C]	Reference
			[deg]				
			24V	36V	48V		
1	Line filter	L101	51	51	51	120	
2	Line filter	L102	52	52	54	120	
3	Rectifier(Input)	SS101	73	74	77	150	Junction Temp.
4	Choke coil(PFC)	L104	62	60	59	130	
5	Input capacitor	C127	33	30	30	105	
6	Rectified diode(PFC)	D101	67	67	70	150	Junction Temp.
7	Transistor(PFC)	TR101	69	68	70	150	Junction Temp.
8	Switching transistor	TR201	68	67	70	150	Junction Temp.
9	Transformer	T201	58	55	55	130	
10	Rectified Diode(Output)	SS502	57	54	52	150	Junction Temp.
11	Output Choke	L507	45	42	45	130	
12	Output Capacitor	C513	24	22	22	105	
13							
14							
15							
16							
17							
18							
19							
20							

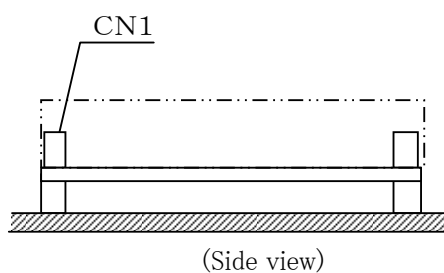


Fig.1.1 Mounting method
(Normal position)

*All information presented herein are not guaranteed.

*本資料は参考資料であり、その内容を保証するものではありません。