

## Temperature increase of main components: 主要部品温度上昇

## LFP100F

## 1. Conditions

- (1) Input : AC 85 ~ 264 [V]  
 (2) Output : Rated output \*Derating is required at AC85 - 90[V] input.  
 (3) Mounting method : Shown as Fig.1.1

## 2. Result

| No. | Parts name              | Symbol No. | Increase ( $\Delta T$ ) |     |     | Rated temp. [°C] | Reference      |
|-----|-------------------------|------------|-------------------------|-----|-----|------------------|----------------|
|     |                         |            | [deg]                   |     |     |                  |                |
|     |                         |            | 24V                     | 36V | 48V |                  |                |
| 1   | Line filter             | L101       | 43                      | 43  | 42  | 130              |                |
| 2   | Line filter             | L102       | 45                      | 45  | 43  | 130              |                |
| 3   | Rectifier(Input)        | SS101      | 65                      | 64  | 65  | 150              | Junction Temp. |
| 4   | Choke coil(PFC)         | L104       | 55                      | 55  | 56  | 130              |                |
| 5   | Input capacitor         | C127       | 30                      | 33  | 34  | 105              |                |
| 6   | Rectified diode(PFC)    | D101       | 66                      | 66  | 69  | 150              | Junction Temp. |
| 7   | Transistor(PFC)         | TR101      | 64                      | 63  | 61  | 150              | Junction Temp. |
| 8   | Switching transistor    | TR201      | 65                      | 62  | 61  | 150              | Junction Temp. |
| 9   | Transformer             | T201       | 56                      | 60  | 57  | 130              |                |
| 10  | Rectified Diode(Output) | SS502      | 48                      | 51  | 44  | 150              | Junction Temp. |
| 11  | Output Choke            | L507       | 36                      | 39  | 49  | 130              |                |
| 12  | Output Capacitor        | C513       | 28                      | 28  | 31  | 105              |                |
| 13  |                         |            |                         |     |     |                  |                |
| 14  |                         |            |                         |     |     |                  |                |
| 15  |                         |            |                         |     |     |                  |                |
| 16  |                         |            |                         |     |     |                  |                |
| 17  |                         |            |                         |     |     |                  |                |
| 18  |                         |            |                         |     |     |                  |                |
| 19  |                         |            |                         |     |     |                  |                |
| 20  |                         |            |                         |     |     |                  |                |

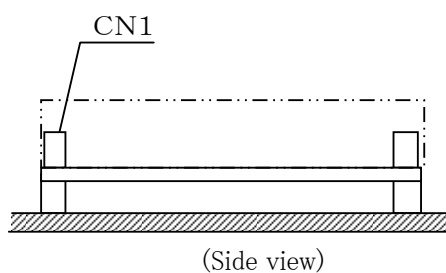


Fig.1.1 Mounting method  
(Normal position)

\*All information presented herein are not guaranteed.

\*本資料は参考資料であり、その内容を保証するものではありません。