

Date : Mar.24,2000

Temperature increase of main components: 主要部品温度上昇

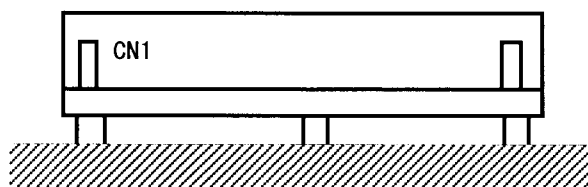
Model : LEB150F

1. Conditions

- (1) Input : AC 85~264V
 (2) Output : 115W(LEB150F-0512), 150W(LEB150F-0524)
 (3) Mounting method : Shown as Fig.1.1

2. Result

No.	Parts name	Symbo l No.	Increase (ΔT)						Rated temp. [°C]	Reference
			[deg]							
			0512	0524						
1	Input Diode	SS101	64	81					150	Junction Temp.
2	Line Filter	L102	34	52					120	
3	Choke Coil(Pfc)	L103	52	58					120	
4	Transistor(Pfc)	TR105	58	74					150	Junction Temp.
5	Rectified Diode(Pfc)	D102	59	72					150	Junction Temp.
6	Input Capacitor	C119	38	36					105	
7	Switching Transistor(V2)	TR201	64	73					150	Junction Temp.
8	Switching Transistor(V1)	TR301	53	58					150	Junction Temp.
9	Transformer(V2)	T201	62	62					130	
10	Transformer(V1)	T301	46	46					130	
11	Rectified Diode(V2 Output)	SS501	77	72					150	Junction Temp.
12	Rectified Diode(V1 Output)	SS601	81	81					150	Junction Temp.
13	Output Choke(V2)	L507	41	46					130	
14	Output Capacitor (V2)	C507	30	30					105	
15	Output Capacitor (V2)	C508	35	36					105	
16	Output Capacitor (V2)	C606	44	44					105	
17	Output Capacitor (V1)	C608	24	28					105	
18										
19										
20										



(Side view)

Fig.1.1 Mounting method
(Normal position)