

Temperature increase of main components: 主要部品温度上昇

Model: GHA300F (Convection)

1. Conditions

- (1) Input : AC 90 ~ 264 [V]
 (2) Output : Rated output
 (3) Mounting method : Shown as Fig.1.1

2. Result

No.	Parts name	Symbol No.	Increase (ΔT)						Rated temp. [°C]	Reference
			[deg]							
			12V	24V	48V					
1	Line Filter	L101	29	26	28				130	
2	Rectifier(Input)	SS11	93	90	91				150	Junction Temp.
3	Choke Coil(Pfc)	L11	54	53	54				130	
4	Input Capacitor	C106	34	30	32				105	
5	Rectified Diode(Pfc)	SS12	93	90	89				150	Junction Temp.
6	Transistor(Pfc)	TR11	88	83	86				150	Junction Temp.
7	Switching Transistor	TR21	88	83	79				150	Junction Temp.
8	Transformer	T11	56	43	40				130	
9	Rectified Transistor(Output)	TR54	54	47	—				175	Junction Temp.
10	Rectified Diode(Output)	D54	—	—	26				150	
11	Output Choke	L51	43	38	26				150	
12	Output Capacitor	C506	33	25	21				105	
13	Output Capacitor	C508	27	20	16				125	
14										
15										
16										
17										
18										
19										
20										

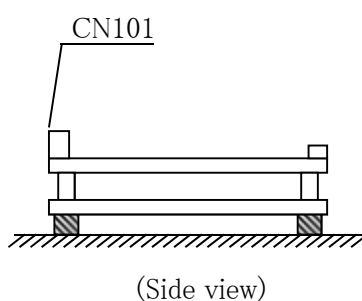


Fig.1.1 Mounting method
(Normal position)

Temperature increase of main components: 主要部品温度上昇

Model: GHA300F (Forced air)

1. Conditions

- (1) Input : AC 90 ~ 264 [V]
 (2) Output : Rated output
 (3) Mounting method : Shown as Fig.1.1

2. Result

No.	Parts name	Symbol No.	Increase (ΔT)						Rated temp. [°C]	Reference
			[deg]							
			12V	24V	48V					
1	Line Filter	L101	15	14	14				130	
2	Rectifier(Input)	SS11	68	65	63				150	Junction Temp.
3	Choke Coil(Pfc)	L11	24	23	26				130	
4	Input Capacitor	C106	20	24	22				105	
5	Rectified Diode(Pfc)	SS12	60	54	58				150	Junction Temp.
6	Transistor(Pfc)	TR11	44	40	43				150	Junction Temp.
7	Switching Transistor	TR21	42	45	47				150	Junction Temp.
8	Transformer	T11	30	26	25				130	
9	Rectified Transistor(Output)	TR54	47	39	—				175	Junction Temp.
10	Rectified Diode(Output)	D54	—	—	57				150	Junction Temp.
11	Output Choke	L51	34	32	22				150	
12	Output Capacitor	C506	8	6	7				105	
13	Output Capacitor	C508	7	5	7				125	
14										
15										
16										
17										
18										
19										
20										

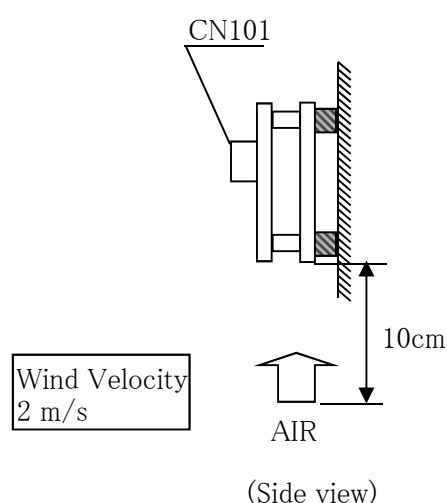


Fig.1.1 Mounting method
(Normal position)