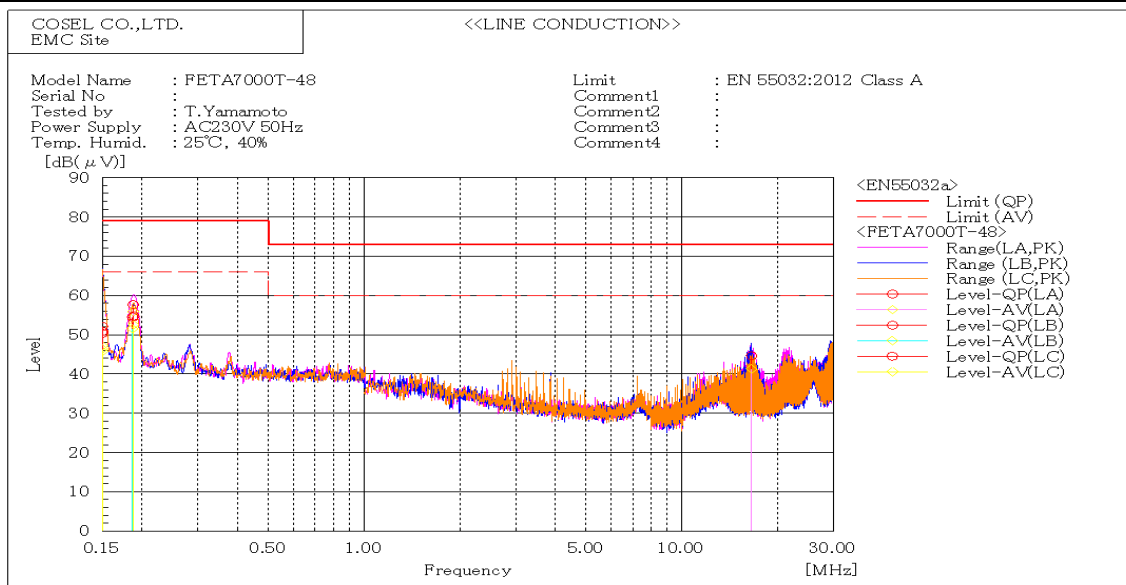
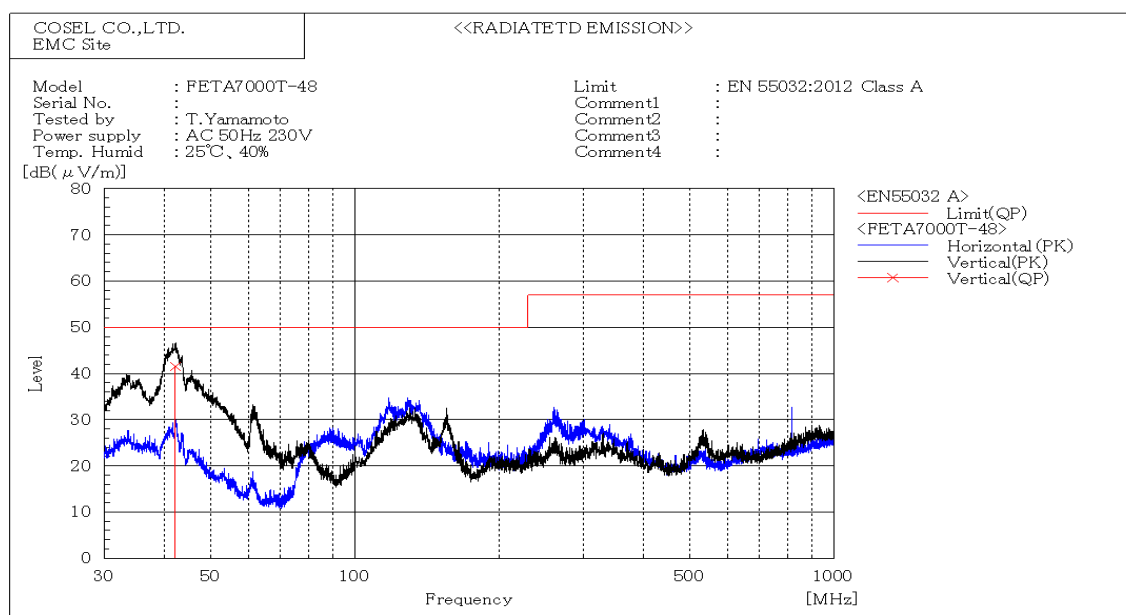


DATA SHEET		Date	20-May-17
Model	FETA7000T-48	Temp.	25 degreeC
Test	EMI Line conduction & Radiated emission	Humid.	40 %RH
		Tested by	T.Yamamoto



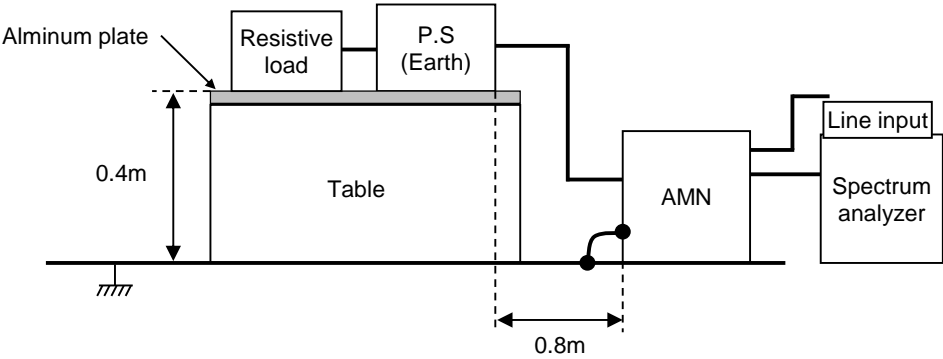
Frequency MHz	Line Phase	Reading dB(μV)		Factor dB	Level dB(μV)		Limit dB(μV)		Margin dB		Pass/Fail	Remark
		QP	AV		QP	AV	QP	AV	QP	AV		
0.15005	LA	30.0	25.4	20.4	50.4	45.8	79.0	66.0	28.6	20.2	Pass	
0.18746	LA	37.3	35.6	20.3	57.6	55.9	79.0	66.0	21.4	10.1	Pass	
16.56745	LA	23.3	20.0	21.3	44.6	41.3	73.0	60.0	28.4	18.7	Pass	
0.15004	LB	31.7	26.8	20.4	52.1	47.2	79.0	66.0	26.9	18.8	Pass	
0.18668	LB	34.1	31.2	20.3	54.4	51.5	79.0	66.0	24.6	14.5	Pass	
0.15003	LC	30.5	25.9	20.4	50.9	46.3	79.0	66.0	28.1	19.7	Pass	
0.18816	LC	34.5	32.3	20.3	54.8	52.6	79.0	66.0	24.2	13.4	Pass	



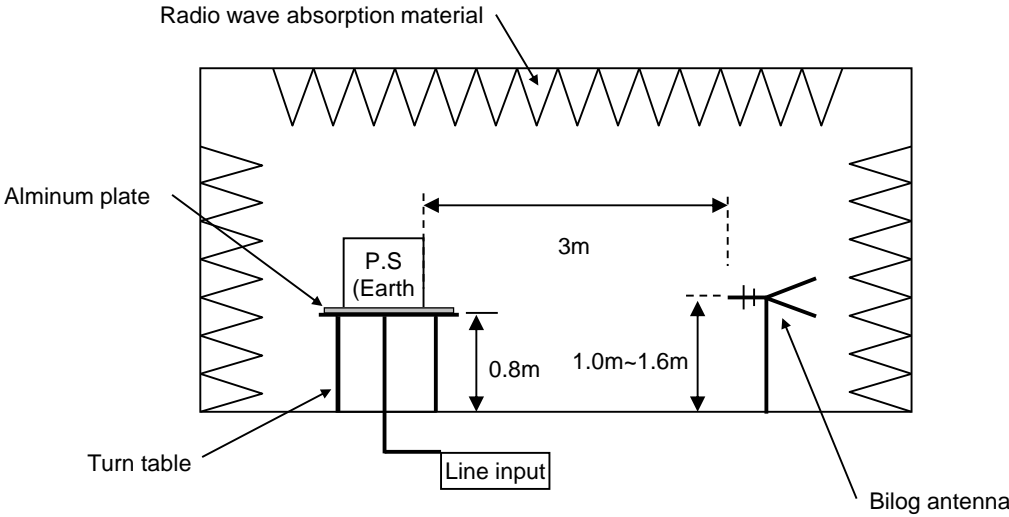
Frequency MHz	Polarization	Stability	Reading dB(μV)	Space Loss	Level dB(μV/m)	Limit dB(μV/m)	Margin dB	Pass/Fail	Height cm	Angle deg	Remark
			QP		QP	QP	QP				
42.265	V	Stable	55.1	-13.6	41.5	50.0	8.5	Pass	118	6	

DATA SHEET		Date	20-May-17
Model	Circuit used for measurement	Temp.	25 degreeC
Test	EMI Line conduction & Radiated emission	Humid.	40 %RH
		Tested by	T.Yamamoto

1. Line conduction



2. Radiated emission

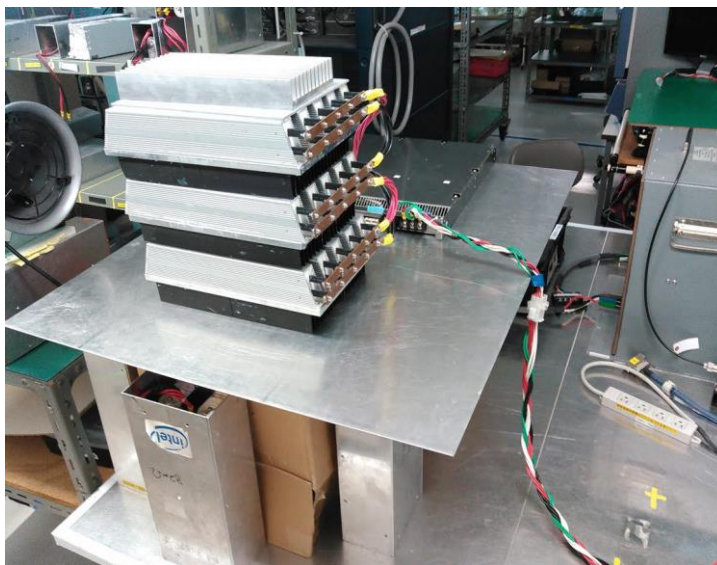


Conditions

Test : EMI
Model Name : FETA7000T

O Photographs of test set-up

1.LINE CONDUCTION



2.RADIATED EMISSION

