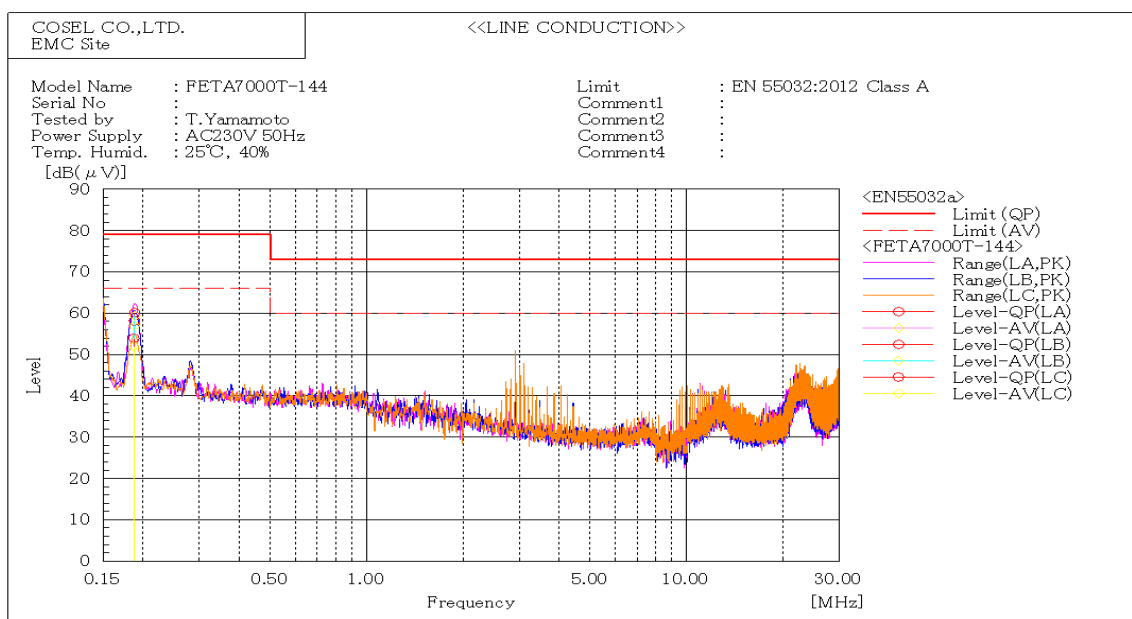
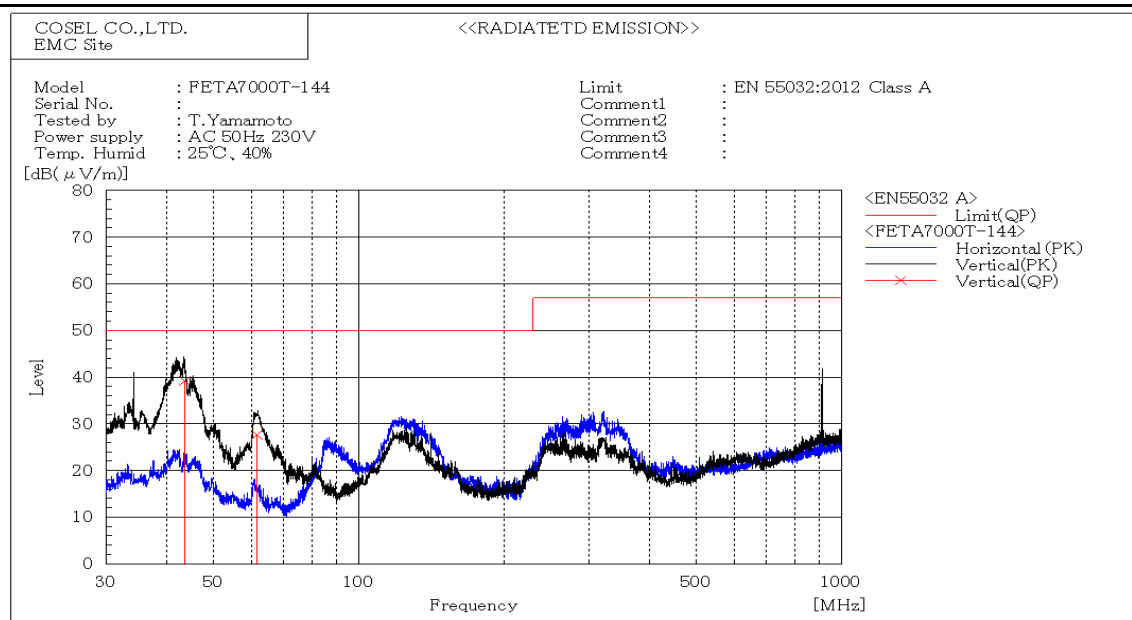


DATA SHEET		Date	22-May-17
Model	FETA7000T-144	Temp.	25 degreeC
Test	EMI Line conduction & Radiated emission	Humid.	40 %RH
		Tested by	T.Yamamoto



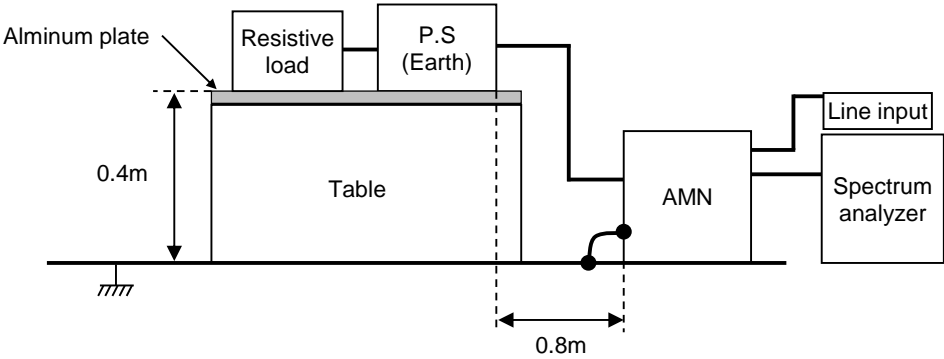
Frequency MHz	Line Phase	Reading dB(μV)		Factor dB	Level dB(μV)		Limit dB(μV)		Margin dB		Pass/Fail	Remark
		QP	AV		QP	AV	QP	AV	QP	AV		
0.18706	LC	33.6	31.6	20.3	53.9	51.9	79.0	66.0	25.1	14.1	Pass	
0.18818	LB	39.8	39.1	20.3	60.1	59.4	79.0	66.0	18.9	6.6	Pass	
0.18787	LA	37.8	36.6	20.3	58.1	56.9	79.0	66.0	20.9	9.1	Pass	



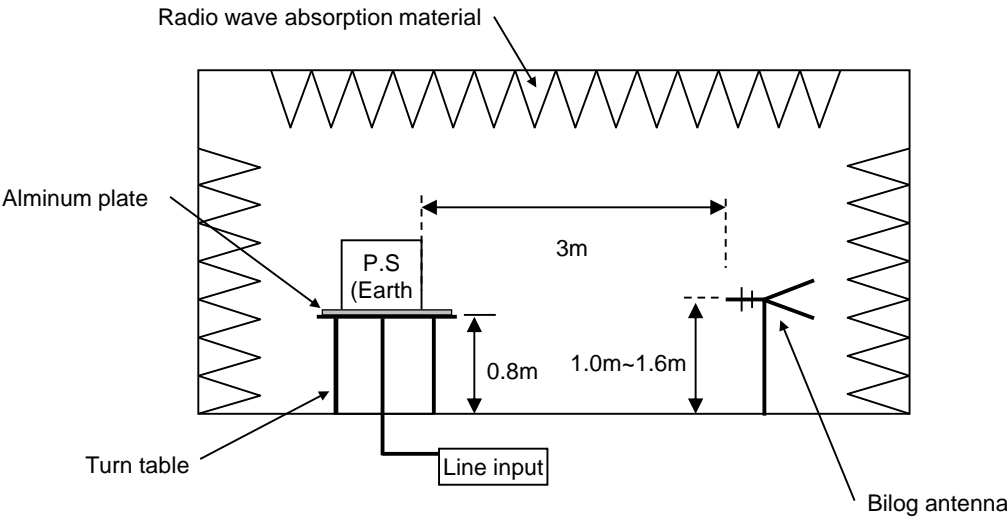
Frequency MHz	Polarization	Stability	Reading dB(μV)	Space Loss	Level dB(μV/m)	Limit dB(μV/m)	Margin dB	Pass/Fail	Height cm	Angle deg	Remark
			QP		QP	QP	QP				
43.659	V	Stable	52.8	-13.5	39.3	50.0	10.7	Pass	100	286	
61.644	V	Stable	43	-15.3	27.7	50.0	22.3	Pass	99	245	

DATA SHEET		Date	22-May-17
Model	Circuit used for measurement	Temp.	25 degreeC
Test	EMI Line conduction & Radiated emission	Humid.	40 %RH
		Tested by	T.Yamamoto

1. Line conduction



2. Radiated emission

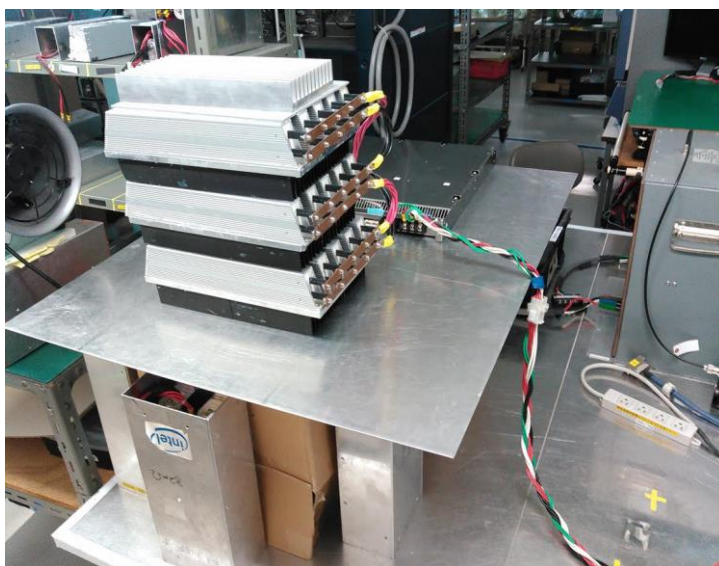


Conditions

Test : EMI
Model Name : FETA7000T

O Photographs of test set-up

1.LINE CONDUCTION



2.RADIATED EMISSION

