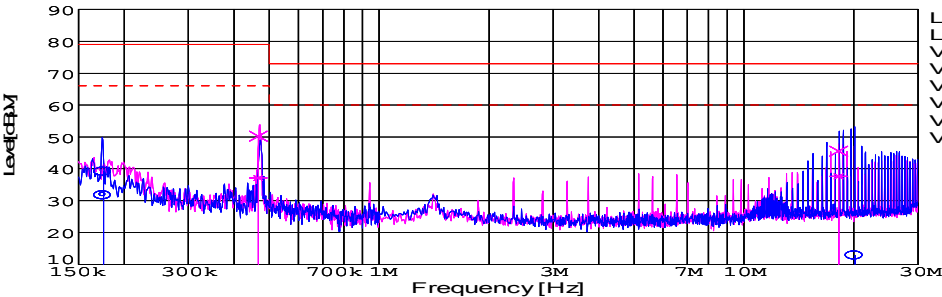
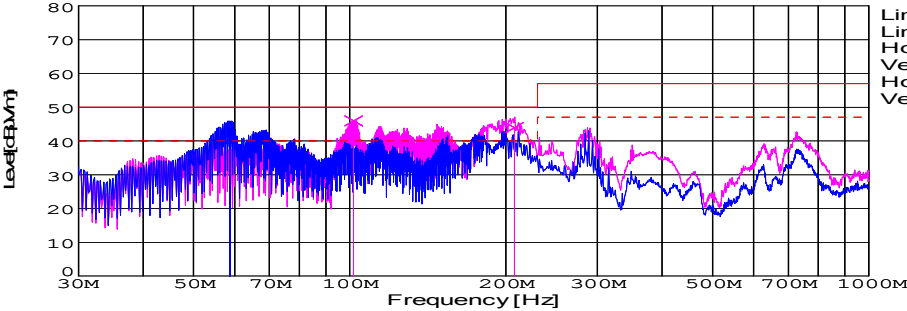
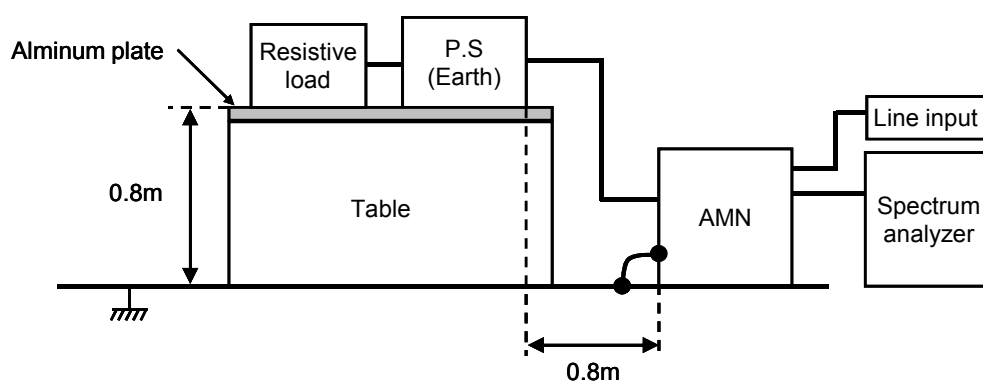


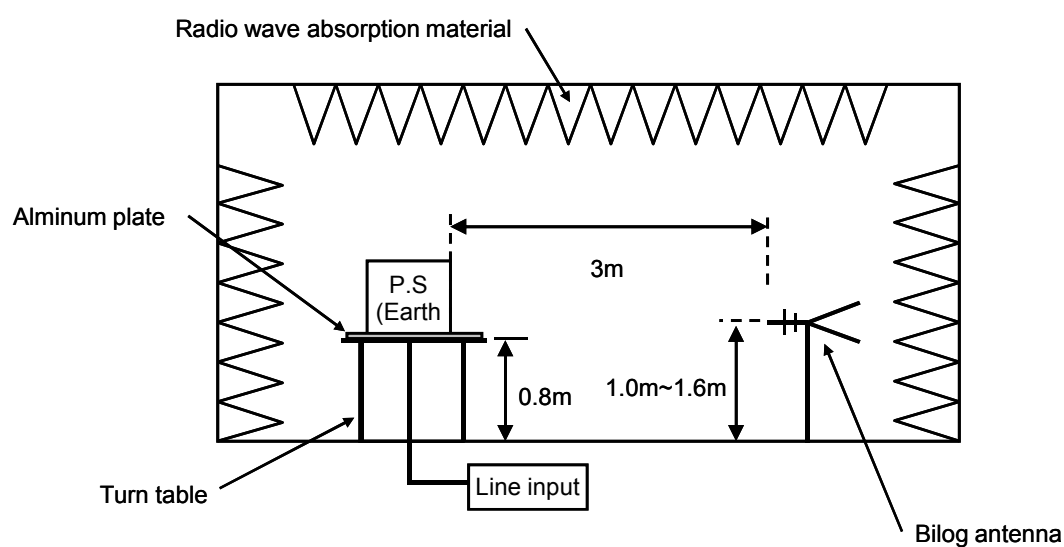
DATA SHEET							Date	17-Apr-09		
Model	DHS50B28						Temp.	25 degreeC		
Test	EMI Line conduction & Radiated emission						Humid.	45 %RH		
							Tested by	S.SAWADA		
LINE CONDUCTION										
Model Name : DHS50B28			Temp. : 25			:				
Model No. :			Humi. : 45			:				
Serial No. :			Date : 2009/4/17 15:44			:				
Points : 4			Test Equip. : R3132,ESPC			:				
Detector : PEAK/QP/Ave.			Load Line : 100mm			:				
Line Mode : VA/VB			Comment : S.SAWADA			:				
Power Supply : AC 230V 50Hz										
Limit1: [EN 55022] Class A(QP)										
Limit2: [EN 55022] Class A(Ave.)										
							Limit1(QP) Limit2(Ave.) VA(PEAK) VB(PEAK) VA(QP) VA(Ave.) VB(QP) VB(Ave.)			
							AC 230V 50Hz			
Frequency [MHz]	Meter Reading (Ave.) [dBuV]	Meter Reading (QP) [dBuV]	Factor [dB]	Level(Ave.) [dBuV]	Level(QP) [dBuV]	Line	Limit(Ave.) [dBuV]	Limit(QP) [dBuV]	Margin(Ave.) [dB]	Margin(QP) [dB]
0.1754	21.9	29.3	9.8	31.7	39.1	VA	66	79	34.3	39.9
20.1843	-2.3	2.5	10.3	8	12.8	VA	60	73	52	60.2
0.4659	27.2	40.3	9.9	37.1	50.2	VB	66	79	28.9	28.8
18.1852	27.4	35.3	10.2	37.6	45.5	VB	60	73	22.4	27.5
RADIATED EMISSION										
Model Name : DHS50B28			Temp. : 25			:				
Model No. :			Humi. : 45			:				
Serial No. :			Date : 2009/4/18 11:10			:				
Points : 3			Test Equip. : R3132,ESPC			:				
Detector : PEAK/QP			Load Line : 100mm			:				
Polarization : Hori. & Vert.			Comment : S.SAWADA			:				
Power Supply : AC 230V 50Hz										
Limit: [EN 55022] Class A<3m>										
							Limit(QP) Limit(QP)(-10dB) Horizontal(PEAK) Vertical(PEAK) Horizontal(QP) Vertical(QP)			
							AC 230V 50Hz			
Frequency [MHz]	Meter Reading (QP) [dBuV/m]	Ant. Type	Antenna Factor [dB/m]	Cable & Preamp [dB]	Level(QP) [dBuV/m]	Angle [°]	Height [cm]	Polar.	Limit [dBuV/m]	Margin [dB]
58.77	67.4	BL	4.9	-32	40.3	212	131	Hori.	50	9.7
101.712	67.8	BL	9.9	-31.7	46	282	115	Vert.	50	4
207.566	66.5	BL	8.7	-31.3	43.9	48	101	Vert.	50	6.1

DATA SHEET		Date	17-Apr-09
Model	Circuit used for measurement	Temp.	25 degreeC
Test	EMI Line conduction & Radiated emission	Humid.	45 %RH
		Tested by	S.SAWADA

1. Line conduction



2. Radiated emission



Test: EMI

Model Name:DHS50B/DHS100B Series

○ Photographs of Test Set-Up

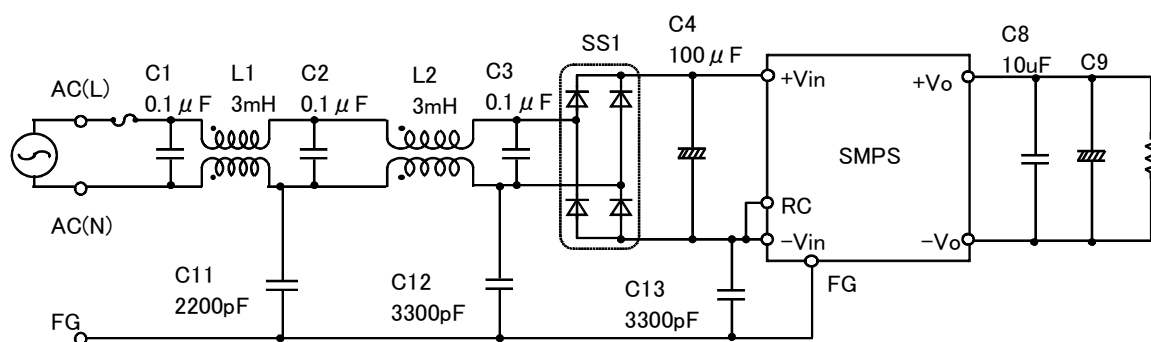
LINE CONDUCTION



RADIATED EMISSION



○ Test circuit



L1,L2 : SC-02-300(NEC TOKIN)
 SS1 : D3SBA60(SINDENGEN)
 C9 : DHS50B03/DHS100B03 2200 μ F
 DHS50B05/DHS100B05 2200 μ F
 DHS50B12/DHS100B12 470 μ F
 DHS50B15/DHS100B15 470 μ F
 DHS50B24/DHS100B24 220 μ F
 DHS50B28/DHS100B28 220 μ F