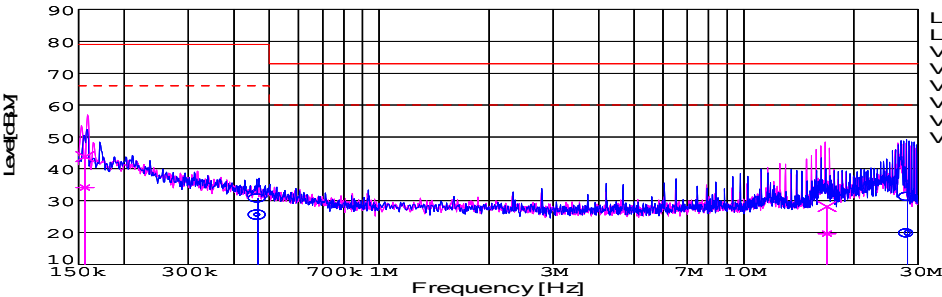
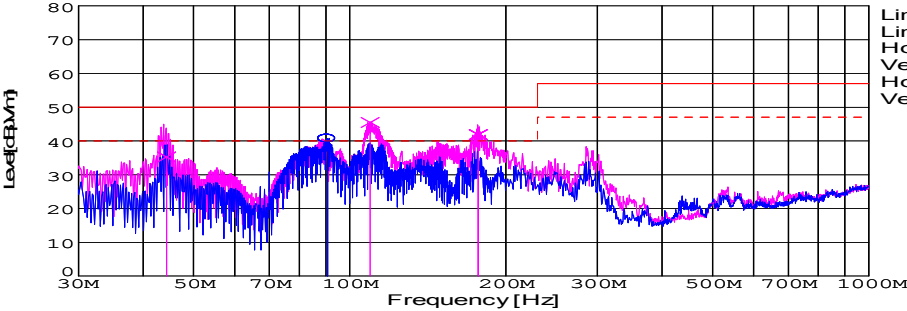
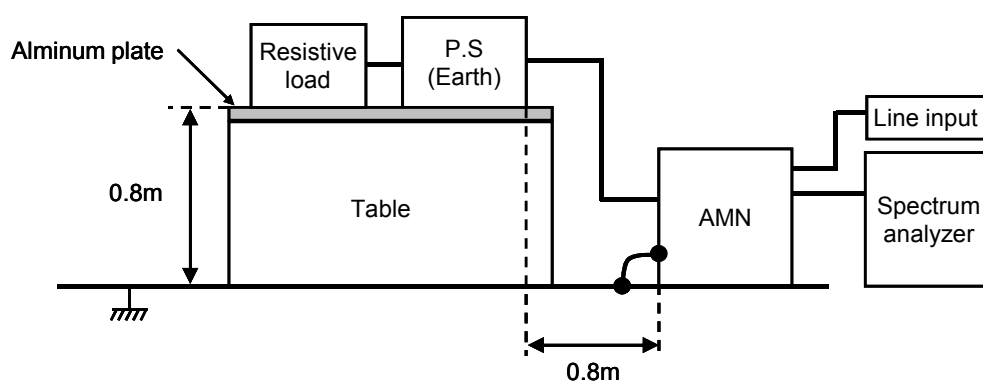


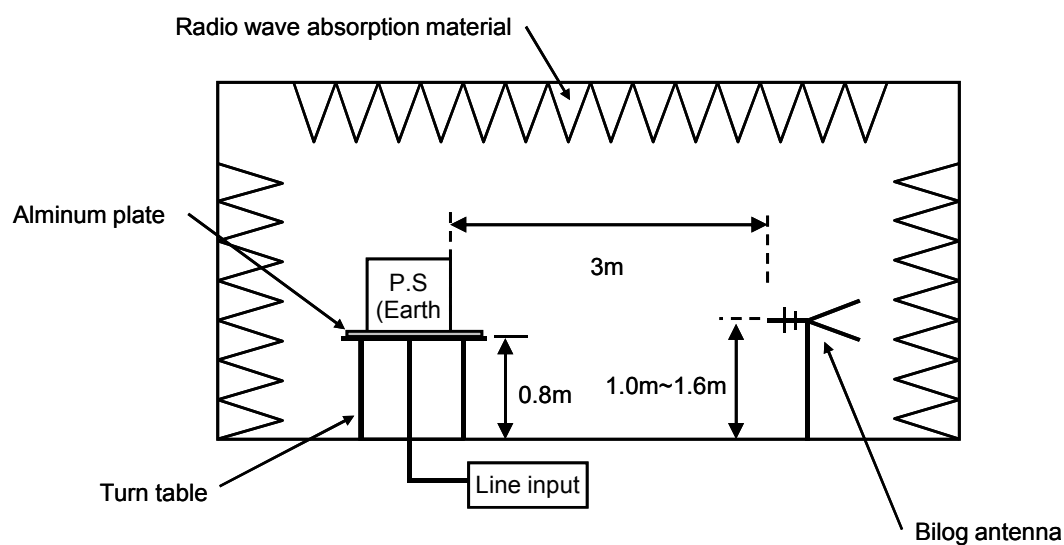
DATA SHEET							Date	18-Apr-09																																																									
Model	DHS50B15						Temp.	25 degreeC																																																									
Test	EMI Line conduction & Radiated emission						Humid.	45 %RH																																																									
							Tested by	S.SAWADA																																																									
LINE CONDUCTION																																																																	
Model Name : DHS50B15			Temp. : 25			:																																																											
Model No. :			Humi. : 45			:																																																											
Serial No. :			Date : 2009/4/18 4:19			:																																																											
Points : 4			Test Equip. : R3132,ESPC			:																																																											
Detector : PEAK/QP/Ave.			Load Line : 100mm			:																																																											
Line Mode : VA/VB			Comment : S.SAWADA			:																																																											
Power Supply : AC 230V 50Hz																																																																	
Limit1: [EN 55022] Class A(QP)																																																																	
Limit2: [EN 55022] Class A(Ave.)																																																																	
							AC 230V 50Hz																																																										
<table><tr><th>Frequency [MHz]</th><th>Meter Reading (Ave.) [dBuV]</th><th>Meter Reading (QP) [dBuV]</th><th>Factor [dB]</th><th>Level(Ave.) [dBuV]</th><th>Level(QP) [dBuV]</th><th>Line</th><th>Limit(Ave.) [dBuV]</th><th>Limit(QP) [dBuV]</th><th>Margin(Ave.) [dB]</th><th>Margin(QP) [dB]</th></tr><tr><td>0.4656</td><td>15.3</td><td>20.6</td><td>10.1</td><td>25.4</td><td>30.7</td><td>VA</td><td>66</td><td>79</td><td>40.6</td><td>48.3</td></tr><tr><td>28.0978</td><td>8.7</td><td>20.2</td><td>11</td><td>19.7</td><td>31.2</td><td>VA</td><td>60</td><td>73</td><td>40.3</td><td>41.8</td></tr><tr><td>0.1561</td><td>24.1</td><td>33.8</td><td>10</td><td>34.1</td><td>43.8</td><td>VB</td><td>66</td><td>79</td><td>31.9</td><td>35.2</td></tr><tr><td>16.9016</td><td>8.9</td><td>17.4</td><td>10.7</td><td>19.6</td><td>28.1</td><td>VB</td><td>60</td><td>73</td><td>40.4</td><td>44.9</td></tr></table>											Frequency [MHz]	Meter Reading (Ave.) [dBuV]	Meter Reading (QP) [dBuV]	Factor [dB]	Level(Ave.) [dBuV]	Level(QP) [dBuV]	Line	Limit(Ave.) [dBuV]	Limit(QP) [dBuV]	Margin(Ave.) [dB]	Margin(QP) [dB]	0.4656	15.3	20.6	10.1	25.4	30.7	VA	66	79	40.6	48.3	28.0978	8.7	20.2	11	19.7	31.2	VA	60	73	40.3	41.8	0.1561	24.1	33.8	10	34.1	43.8	VB	66	79	31.9	35.2	16.9016	8.9	17.4	10.7	19.6	28.1	VB	60	73	40.4	44.9
Frequency [MHz]	Meter Reading (Ave.) [dBuV]	Meter Reading (QP) [dBuV]	Factor [dB]	Level(Ave.) [dBuV]	Level(QP) [dBuV]	Line	Limit(Ave.) [dBuV]	Limit(QP) [dBuV]	Margin(Ave.) [dB]	Margin(QP) [dB]																																																							
0.4656	15.3	20.6	10.1	25.4	30.7	VA	66	79	40.6	48.3																																																							
28.0978	8.7	20.2	11	19.7	31.2	VA	60	73	40.3	41.8																																																							
0.1561	24.1	33.8	10	34.1	43.8	VB	66	79	31.9	35.2																																																							
16.9016	8.9	17.4	10.7	19.6	28.1	VB	60	73	40.4	44.9																																																							
RADIATED EMISSION																																																																	
Model Name : DHS50B15			Temp. : 25			:																																																											
Model No. :			Humi. : 45			:																																																											
Serial No. :			Date : 2009/4/20 14:27			:																																																											
Points : 4			Test Equip. : R3132,ESPC			:																																																											
Detector : PEAK/QP			Load Line : 100mm			:																																																											
Polarization : Hori. & Vert.			Comment : S.SAWADA			:																																																											
Power Supply : AC 230V 50Hz																																																																	
Limit: [EN 55022] Class A<3m>																																																																	
							AC 230V 50Hz																																																										
<table><tr><th>Frequency [MHz]</th><th>Meter Reading (QP) [dBuV]</th><th>Ant. Type</th><th>Antenna Factor [dB/m]</th><th>Cable & Preamp [dB]</th><th>Level(QP) [dBuV/m]</th><th>Angle [°]</th><th>Height [cm]</th><th>Polar.</th><th>Limit [dBuV/m]</th><th>Margin [dB]</th></tr><tr><td>90.57</td><td>63.9</td><td>BL</td><td>8.6</td><td>-31.8</td><td>40.7</td><td>354</td><td>139</td><td>Hori.</td><td>50</td><td>9.3</td></tr><tr><td>109.458</td><td>66.5</td><td>BL</td><td>10.6</td><td>-31.7</td><td>45.4</td><td>15</td><td>118</td><td>Vert.</td><td>50</td><td>4.6</td></tr><tr><td>176.849</td><td>64.8</td><td>BL</td><td>8.5</td><td>-31.4</td><td>41.9</td><td>82</td><td>117</td><td>Vert.</td><td>50</td><td>8.1</td></tr></table>											Frequency [MHz]	Meter Reading (QP) [dBuV]	Ant. Type	Antenna Factor [dB/m]	Cable & Preamp [dB]	Level(QP) [dBuV/m]	Angle [°]	Height [cm]	Polar.	Limit [dBuV/m]	Margin [dB]	90.57	63.9	BL	8.6	-31.8	40.7	354	139	Hori.	50	9.3	109.458	66.5	BL	10.6	-31.7	45.4	15	118	Vert.	50	4.6	176.849	64.8	BL	8.5	-31.4	41.9	82	117	Vert.	50	8.1											
Frequency [MHz]	Meter Reading (QP) [dBuV]	Ant. Type	Antenna Factor [dB/m]	Cable & Preamp [dB]	Level(QP) [dBuV/m]	Angle [°]	Height [cm]	Polar.	Limit [dBuV/m]	Margin [dB]																																																							
90.57	63.9	BL	8.6	-31.8	40.7	354	139	Hori.	50	9.3																																																							
109.458	66.5	BL	10.6	-31.7	45.4	15	118	Vert.	50	4.6																																																							
176.849	64.8	BL	8.5	-31.4	41.9	82	117	Vert.	50	8.1																																																							

DATA SHEET		Date	18-Apr-09
Model	Circuit used for measurement	Temp.	25 degreeC
Test	EMI Line conduction & Radiated emission	Humid.	45 %RH
		Tested by	S.SAWADA

1. Line conduction



2. Radiated emission



Test: EMI

Model Name:DHS50B/DHS100B Series

○ Photographs of Test Set-Up

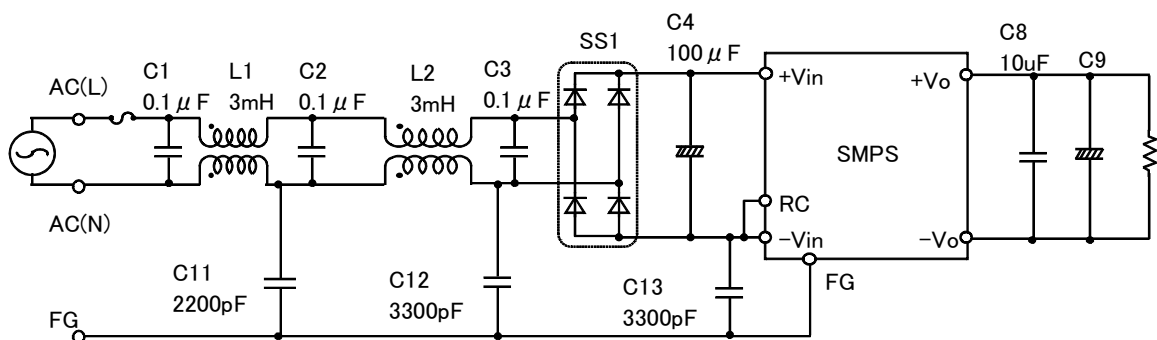
LINE CONDUCTION



RADIATED EMISSION



○ Test circuit



L1,L2	:	SC-02-300(NEC TOKIN)
SS1	:	D3SBA60(SINDENGEN)
C9	:	DHS50B03/DHS100B03 2200 μ F
	:	DHS50B05/DHS100B05 2200 μ F
	:	DHS50B12/DHS100B12 470 μ F
	:	DHS50B15/DHS100B15 470 μ F
	:	DHS50B24/DHS100B24 220 μ F
	:	DHS50B28/DHS100B28 220 μ F