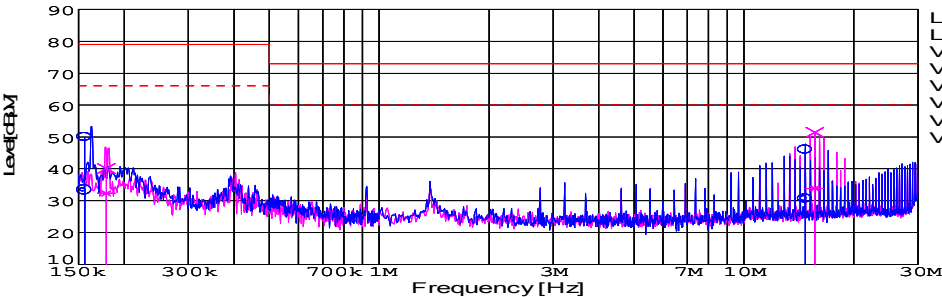
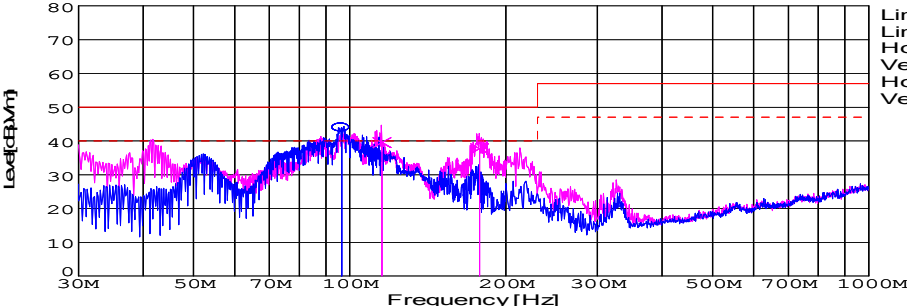
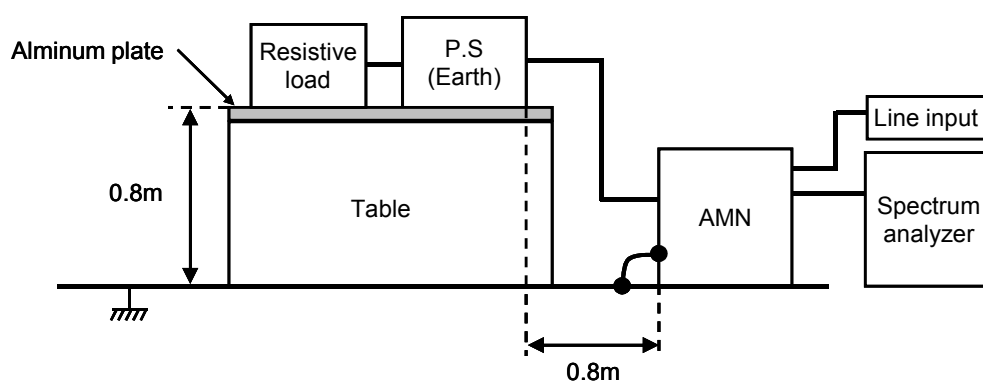


DATA SHEET							Date	20-Apr-09		
Model	DHS50B05						Temp.	25 degreeC		
Test	EMI Line conduction & Radiated emission						Humid.	45 %RH		
							Tested by	S.SAWADA		
LINE CONDUCTION										
Model Name : DHS50B05			Temp. : 25			:				
Model No. :			Humi. : 45			:				
Serial No. :			Date : 2009/4/20 16:00			:				
Points : 4			Test Equip. : R3132,ESPC			:				
Detector : PEAK/QP/Ave.			Load Line : 100mm			:				
Line Mode : VA/VB			Comment : S.SAWADA			:				
Power Supply : 230V(1 Phase) 50Hz										
Limit1: [EN 55022] Class A(QP)										
Limit2: [EN 55022] Class A(Ave.)										
							Limit1(QP) ——— Limit2(Ave.) - - - VA(PEAK) ——— VB(PEAK) ——— VA(QP) ○ VA(Ave.) ——— VB(QP) x VB(Ave.) ———			
							230V(1 Phase) 50Hz			
Frequency [MHz]	Meter Reading (Ave.) [dBuV]	Meter Reading (QP) [dBuV]	Factor [dB]	Level(Ave.) [dBuV]	Level(QP) [dBuV]	Line	Limit(Ave.) [dBuV]	Limit(QP) [dBuV]	Margin(Ave.) [dB]	Margin(QP) [dB]
0.1557	23.5	40.1	9.8	33.3	49.9	VA	66	79	32.7	29.1
14.7357	20.4	35.9	10.2	30.6	46.1	VA	60	73	29.4	26.9
0.1786	22.5	30.3	9.8	32.3	40.1	VB	66	79	33.7	38.9
15.6488	23.6	41.2	10.2	33.8	51.4	VB	60	73	26.2	21.6

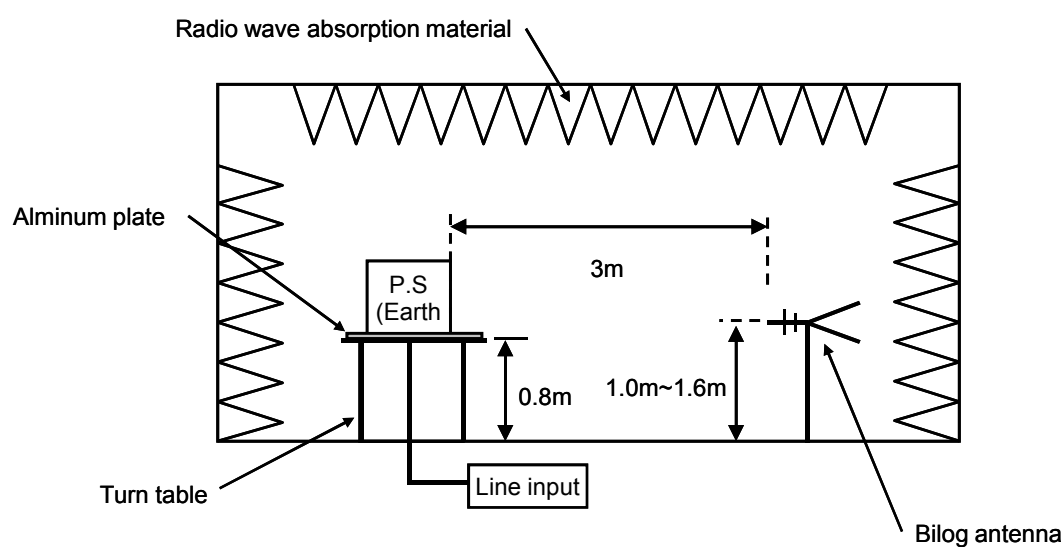
RADIATED EMISSION										
Model Name : DHS50B05			Temp. : 25			:				
Model No. :			Humi. : 45			:				
Serial No. :			Date : 2009/4/20 19:25			:				
Points : 3			Test Equip. : R3132,ESPC			:				
Detector : PEAK/QP			Load Line : 100mm			:				
Polarization : Hori. & Vert.			Comment : S.SAWADA			:				
Power Supply : AC 230V 50Hz										
Limit: [EN 55022] Class A<3m>										
							Limit(QP) ——— Limit(QP)(-10dB) - - - Horizontal(PEAK) ——— Vertical(PEAK) ——— Horizontal(QP) ○ Vertical(QP) x			
							AC230V 50Hz			
Frequency [MHz]	Meter Reading (QP) [dBuV/m]	Ant. Type	Antenna Factor [dB/m]	Cable & Preamp [dB]	Level(QP) [dBuV/m]	Angle [°]	Height [cm]	Polar.	Limit [dBuV/m]	Margin [dB]
96.484	66.3	BL	9.4	-31.8	43.9	338	151	Hori.	50	6.1
115.396	60.4	BL	10.8	-31.7	39.5	65	136	Vert.	50	10.5
177.925	60.6	BL	8.5	-31.4	37.7	134	130	Vert.	50	12.3

DATA SHEET		Date	20-Apr-09
Model	Circuit used for measurement	Temp.	25 degreeC
Test	EMI Line conduction & Radiated emission	Humid.	45 %RH
		Tested by	S.SAWADA

1. Line conduction



2. Radiated emission



Test: EMI

Model Name:DHS50B/DHS100B Series

○ Photographs of Test Set-Up

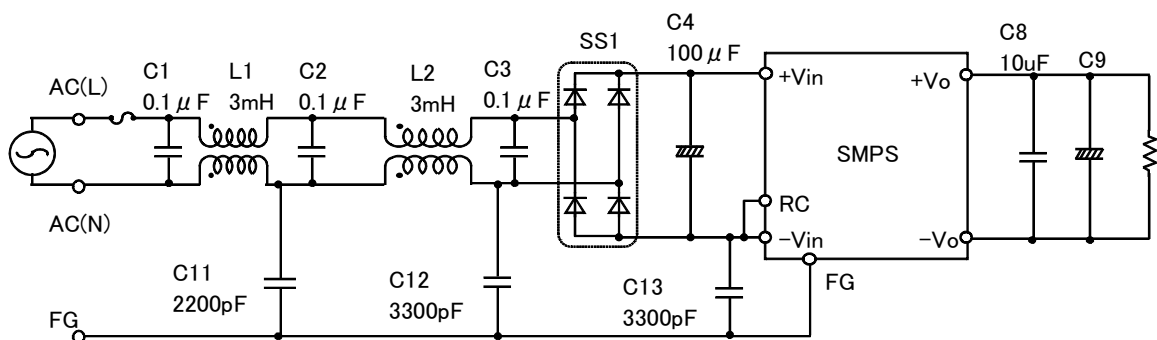
LINE CONDUCTION



RADIATED EMISSION



○ Test circuit



L1,L2 : SC-02-300(NEC TOKIN)
 SS1 : D3SBA60(SINDENGEN)
 C9 : DHS50B03/DHS100B03 2200 μF
 DHS50B05/DHS100B05 2200 μF
 DHS50B12/DHS100B12 470 μF
 DHS50B15/DHS100B15 470 μF
 DHS50B24/DHS100B24 220 μF
 DHS50B28/DHS100B28 220 μF