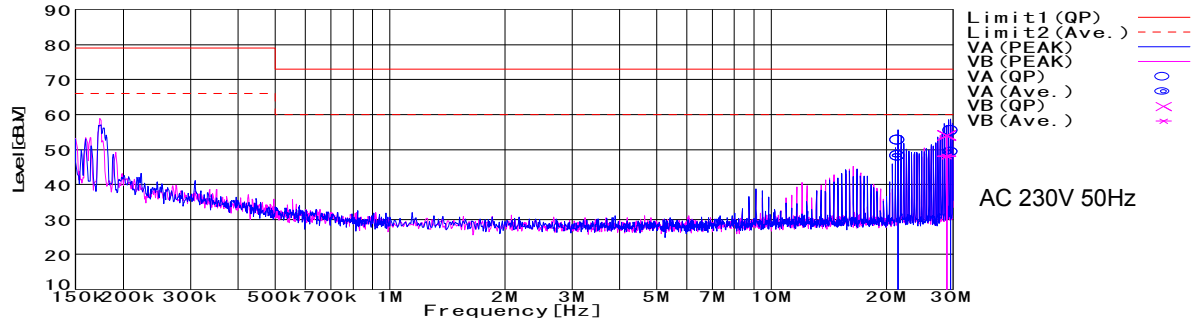


DATA SHEET		Date	08-Oct-09
Model	DHS250B07	Temp.	25 degreeC
Test	EMI Line conduction & Radiated emission	Humid.	45 %RH
		Tested by	D.TSUCHIDA

LINE CONDUCTION
 Model Name : DHS250B07
 Model No. :
 Serial No. :
 Points : 3
 Detector : PEAK/QP/Ave.
 Line Mode : VA/VB
 Power Supply : AC 230V 50Hz
 Limit1 : [EN 55011] Class A Gr. 1 (QP)
 Limit2 : [EN 55011] Class A Gr. 1 (Ave.)

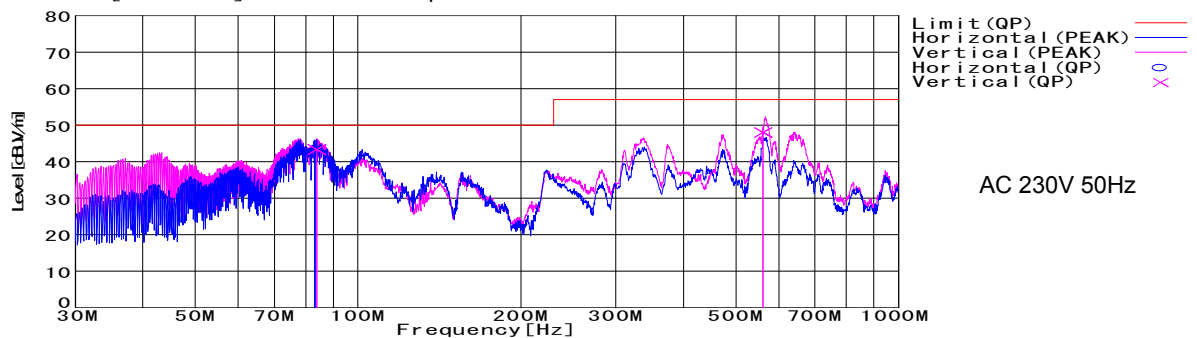
Temp. : 25°C
 Humi. : 45%
 Date : 2009/10/8 16:55
 Test Equip. : R3132. ESPC
 Load Line : 100mm
 Comment : RYOU HOU



Frequency [MHz]	Meter Reading (Ave.) [dBuV]	Meter Reading (QP) [dBuV]	Factor [dB]	Level(Ave.) [dBuV]	Level(QP) [dBuV]	Line	Limit(Ave.) [dBuV]	Limit(QP) [dBuV]	Margin(Ave.) [dB]	Margin(QP) [dB]
21.493	37.3	41.7	10.9	48.2	52.6	VA	60	73	11.8	20.4
29.506	38.1	44.1	11.1	49.2	55.2	VA	60	73	10.8	17.8

RADIATED EMISSION
 Model Name : DHS250B07
 Model No. :
 Serial No. :
 Points : 3
 Detector : PEAK/QP
 Polarization : Hori. & Vert.
 Power Supply : AC230V 50Hz
 Limit : [EN 55011] Class A Group 1<3m>

Temp. : 25°C
 Humi. : 45%
 Date : 2009/10/10 14:44
 Test Equip. : R3132. ESPC
 Load Line : 100mm
 Comment : D. TSUCHIDA



Frequency [MHz]	Meter Reading (QP) [dBuV]	Ant. Type	Antenna Factor [dB/m]	Cable & Preamp [dB]	Level(QP) [dBuV/m]	Angle [°]	Height [cm]	Polar.	Limit [dBuV/m]	Margin [dB]
83.199	59.9	BL	7.6	-25.2	42.3	177	159	Hori.	50	7.7
83.88	60.9	BL	7.8	-25.3	43.4	280	145	Vert.	50	6.6
561.702	51.1	BL	20.5	-23.6	48	89	109	Vert.	57	9

DATA SHEET

Model	Circuit used for measurement
Test	EMI Line conduction & Radiated emission

1. Line conduction



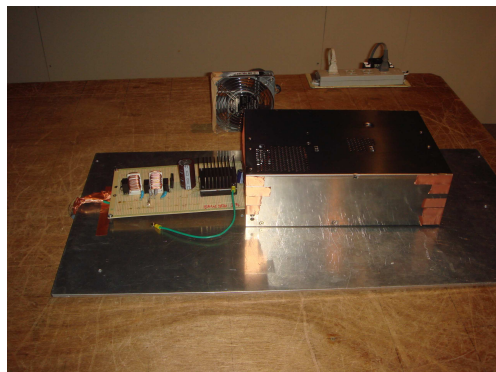
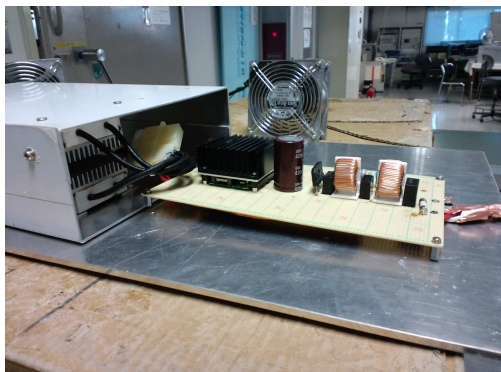
2. Radiated emission



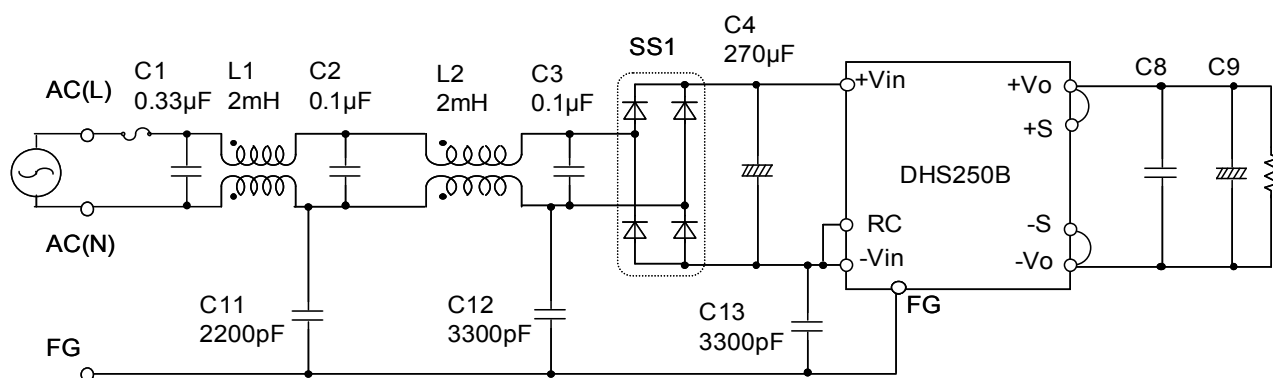
Model Name:DHS250B Series

○ Photographs of Test Set-Up

RADIATED EMISSION



○ Test circuit



SS1 : D10XB60(SINDENGEN)

C8 :	DHS250B03	10μF
	DHS250B05	10μF
	DHS250B07	10μF
	DHS250B12	10μF
	DHS250B15	10μF
	DHS250B24	4.7μF
	DHS250B28	4.7μF
	DHS250B48	2.2μF

C9 : DHS250B03 2200μF
DHS250B05 2200μF
DHS250B07 2200μF
DHS250B12 1000μF
DHS250B15 1000μF
DHS250B24 470μF
DHS250B28 470μF
DHS250B48 330μF