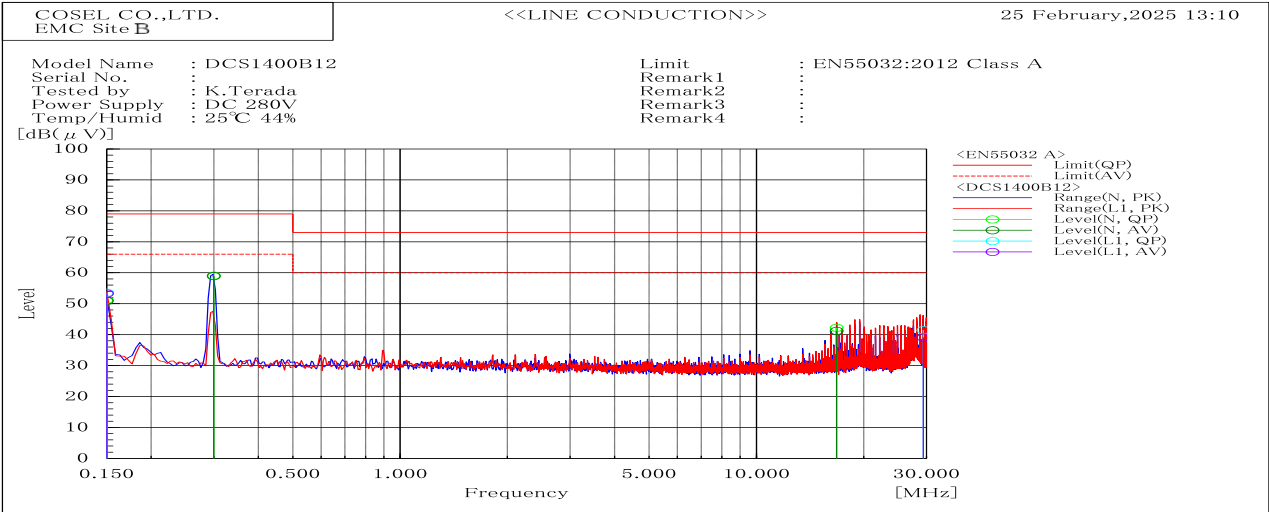
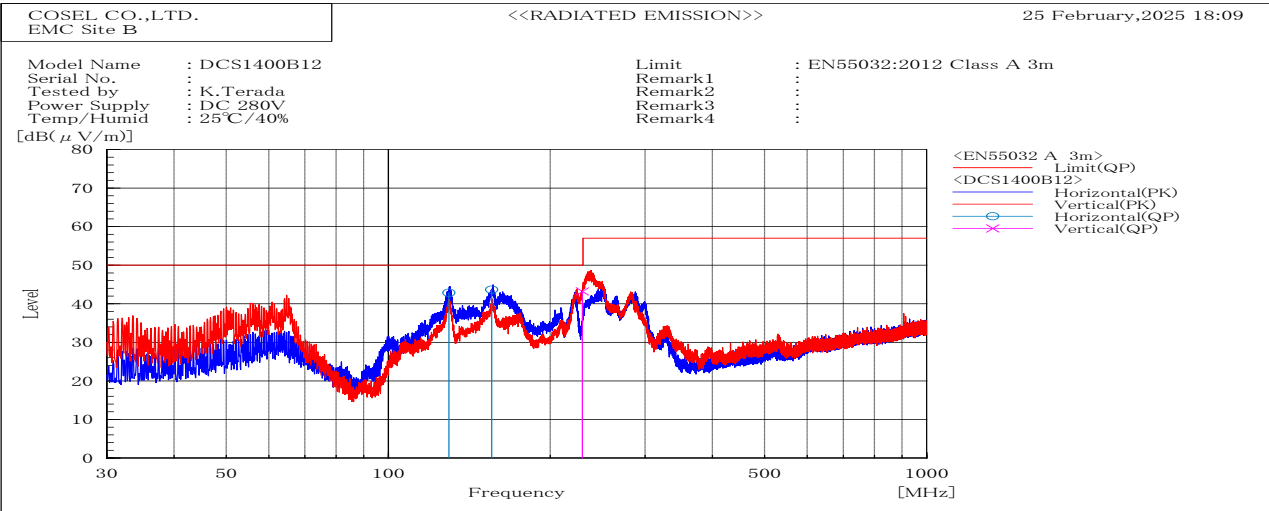


| DATA SHEET | | Date | 15-May-25 |
|------------|--|-----------|------------|
| Model | DCS1400B12 | Temp. | 25 degreeC |
| Test | EMI Line conduction & Radiated emission | Humid. | 40 %RH |
| | | Tested by | K.Terada |



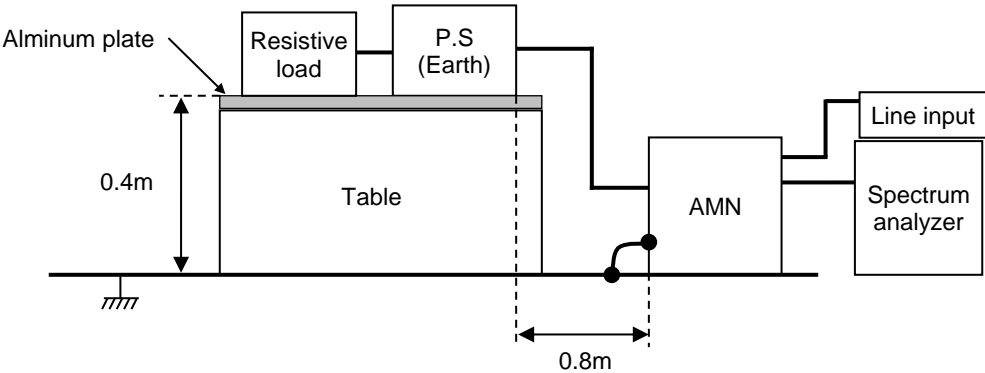
| Frequency | Line | Level | | Limit | | Margin | | Pass/Fail | Remark |
|-----------|------|--------|------|--------|----|--------|------|-----------|--------|
| MHz | | dB(μV) | | dB(μV) | | dB | | | |
| | | QP | AV | QP | AV | QP | AV | | |
| 0.15 | N | 51.3 | 50.9 | 79 | 66 | 27.7 | 15.1 | Pass | |
| 0.3 | N | 59.1 | 58.9 | 79 | 66 | 19.9 | 7.1 | Pass | |
| 16.797 | N | 42.2 | 41.2 | 73 | 60 | 30.8 | 18.8 | Pass | |
| 0.15 | L1 | 53.5 | 53.3 | 79 | 66 | 25.5 | 12.7 | Pass | |
| 29.396 | L1 | 41.5 | 39.1 | 73 | 60 | 31.5 | 20.9 | Pass | |



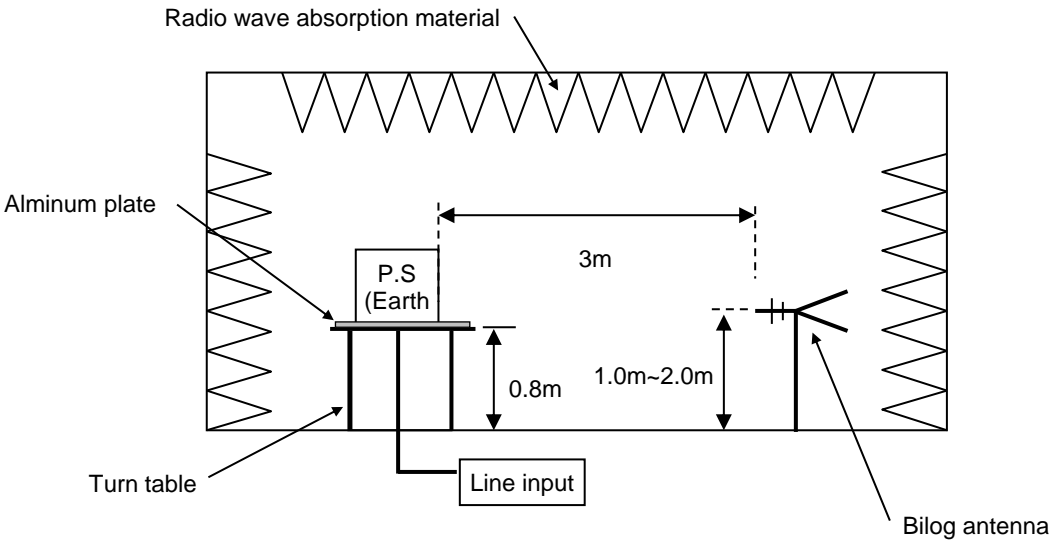
| Frequency MHz | Polarization | Stability | Level | Limit | Margin | Pass/Fail | Height cm | Angle deg | Remark |
|------------------|--------------|-----------|----------------|----------------|----------|-----------|--------------|--------------|--------|
| | | | dB(μV/m) QP | dB(μV/m) QP | dB QP | | | | |
| 129.606 | H | Stable | 42.9 | 50 | 7.1 | Pass | 200 | 298.6 | |
| 155.557 | H | Stable | 43.7 | 50 | 6.3 | Pass | 188.4 | 103 | |
| 229.373 | V | Stable | 43.2 | 50 | 6.8 | Pass | 100.2 | 46.1 | |

| DATA SHEET | | Date | 15-May-25 |
|------------|--|-----------|------------|
| Model | Circuit used for measurement | Temp. | 25 degreeC |
| Test | EMI Line conduction & Radiated emission | Humid. | 40 %RH |
| | | Tested by | K.Terada |

1. Line conduction



2. Radiated emission



Conditions

Test : EMI
Model Name: DCS1400B12

Photographs of Test Set-Up

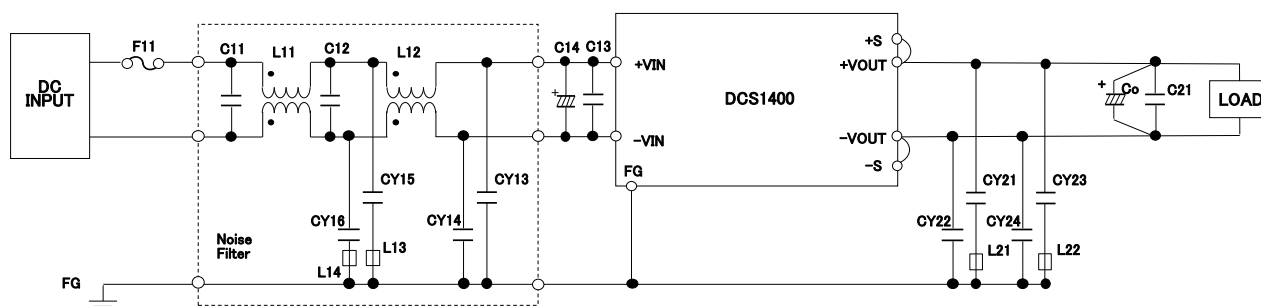
LINE CONDUCTION



RADIATED EMISSION



Testing circuitry



| | |
|---------------------|--|
| F11 | : 0505016 |
| L11,L12 | : SCF25XV-150-1R6A010JH |
| L13,L14 | : Ferrite Bead (K5B T 4x2x2) |
| C11,C13 | : 1.0uF 450V Film Calacitor |
| C12 | : 2.2uF 450V Film Calacitor |
| C14 | : 82uF 450V Electrolytic Capacitor |
| CY13,CY14 | : 2200pF 400V |
| CY15,CY16 | : 1500pF 400V |
| L21,L22 | : Ferrite Bead (K5B T 4x2x2) (For DCS1400B65 only) |
| C21 | : 1.0uF Ceramic Capacitor |
| CY21,CY22,CY23,CY24 | : 0.01uF 300V (For DCS1400B65 only) |
| Co | : DCS1400B12 2200uF 16V Electrolytic Capacitor |
| | DCS1400B24 2200uF 35V Electrolytic Capacitor |
| | DCS1400B28 1000uF 50V Electrolytic Capacitor |
| | DCS1400B36 1000uF 50V Electrolytic Capacitor |
| | DCS1400B48 680uF 63V Electrolytic Capacitor |
| | DCS1400B65 330uF 100V Electrolytic Capacitor |

Fig.1 Testing circuitry