



RADIATED EMISSION

Model Name : DBS400B12

Model No. :

Serial No. :

Detector : PEAK/QP

Points : 5

Polarization : Hori. & Vert.

Limit1: [EN 55022] Class B<3m>

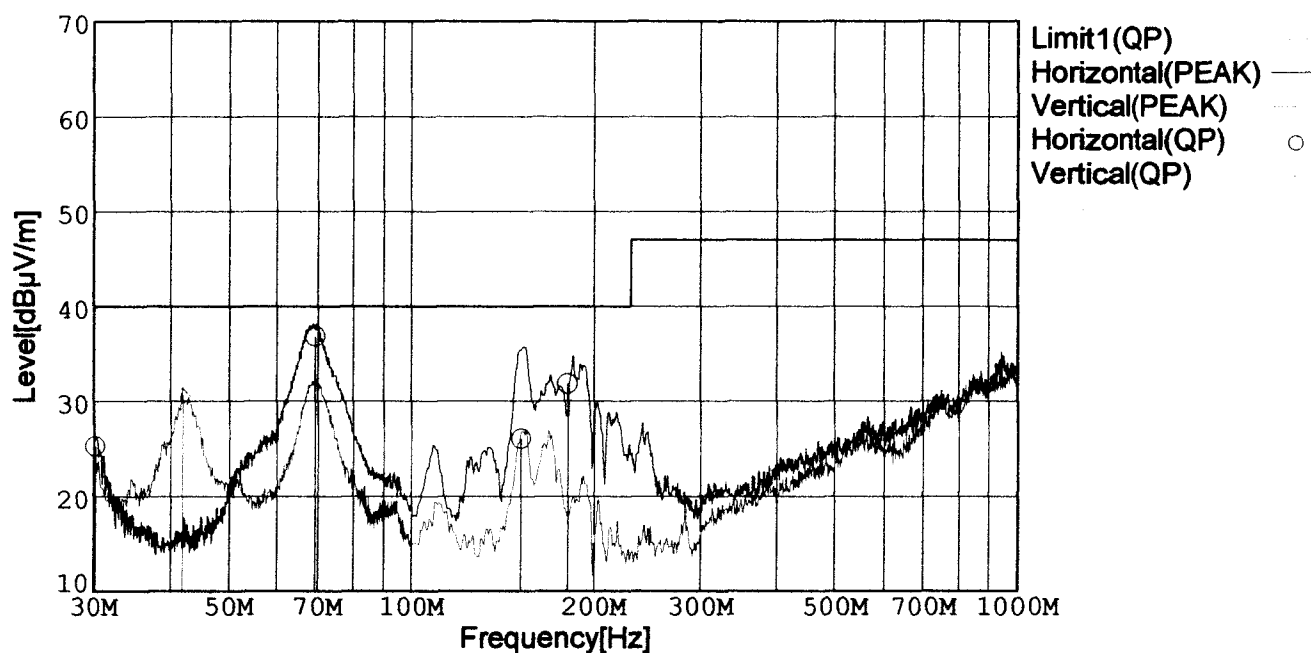
Temperature : 25deg C

Humidity : 45%

Comment : Vin=AC230V,Io=100%

Date : 2000/7/19 21:28

EMI Receiver(s) : R3261A,ESPC



Frequency [MHz]	Meter Reading [dBμV]	Antenna Factor [dB]	Cable Loss [dB]	Level [dBμV/m]	Angle [°]	Height [cm]	Pola.	Limit [dBμV/m]	Margin [dB]
30.096	39.8	-29.0	14.5	25.3	117	117	Hori.	40.0	14.7
69.215	56.1	-28.4	9.1	36.8	37	144	Hori.	40.0	3.2
151.482	40.3	-27.8	13.6	26.1	320	153	Hori.	40.0	13.9
180.923	47.4	-27.6	12.1	31.9	44	156	Hori.	40.0	8.1
41.887	45.2	-28.7	14.9	31.4	350	102	Vert.	40.0	8.6

Conditions

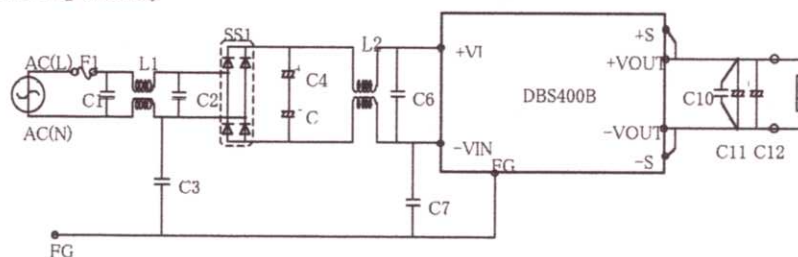
Date 2000/8/11

Test : RADIATED EMISSION
Model Name : DBS400B

○Photographs of Test Set-Up



○Testing circuitry



- F1 : CES15 (SOC:15A 250V)
 C1、C2 : CFJC22E474M (NITSUKO:0.47 μ F 250V)
 C6 : CFJC22E224M (NITSUKO:0.22 μ F 250V)
 C4、C5 : LGQ2E102M (NICHICON:1000 μ F 250V)
 C3、C7 : DE1207-2E332M-KH (MURATA:3300pF 250V)
 L1 : SC-05-20J (TOKIN:2.0mH min 5.0A)
 L2 : SS28H-25045 (TOKIN:4.5mH min 2.5A)
 SS1 : D25XB60 (SINDENGEN:25A 600V)
 C10 : MDD21H104M5 (NITSUKO:0.1 μ F 50V)
 C11、C12 : Table 1 (NIPPON CHEMI-CON)

Table 1

MODEL	C11	C12
DBS400B03	LZX10VB3300MK25	LZX10VB3300MK25
DBS400B05, 07	LZX10VB2200MK20	LZX10VB2200MK20
DBS400B12	LZX25VB1000MK20	LZX25VB1000MK20
DBS400B15, 18	LZX35VB1000MK25	LZX35VB1000MK25
DBS400B24, 28	LZY50VB820MK40	-

Fig 1. Testing circuitry



LINE CONDUCTION

Model Name : DBS400B12

Model No. :

Serial No. :

Detector : PEAK/QP/Ave.

Points : 3

Line Mode : VA/VB

Limit1: [EN 55022] Class B(QP)

Limit2: [EN 55022] Class B(Ave.)

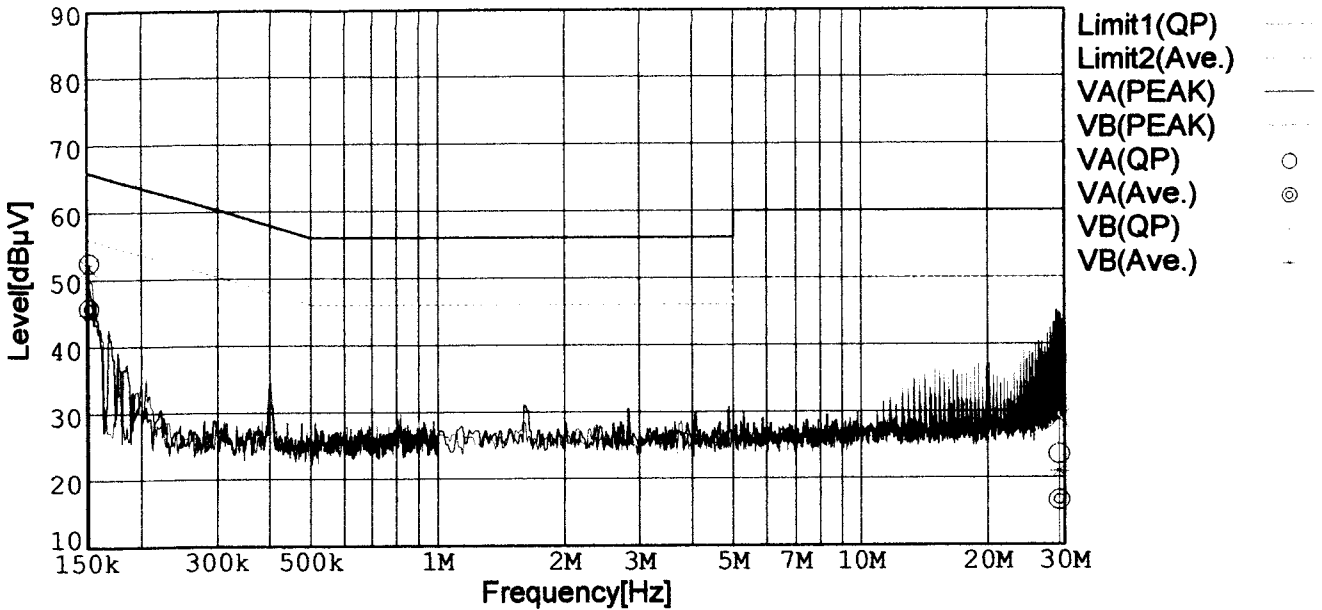
Temperature : 25deg C

Humidity : 45%

Comment : Vin=AC230V,Io=100%

Date : 2000/7/19 22:03

EMI Receiver(s) : R3261A,ESPC



Frequency [MHz]	Meter Reading (QP) [dBμV]	Meter Reading (Ave.) [dBμV]	Factor [dB]	Level (QP) [dBμV]	Level (Ave.) [dBμV]	Line	Limit (QP) [dBμV]	Limit (Ave.) [dBμV]	Margin (QP)[dB]	Margin (Ave.) [dB]
0.1514	42.1	35.3	10.3	52.4	45.6	VA	65.9	55.9	13.5	10.3
0.1512	41.5	34.4	10.3	51.8	44.7	VB	65.9	55.9	14.1	11.2

Conditions

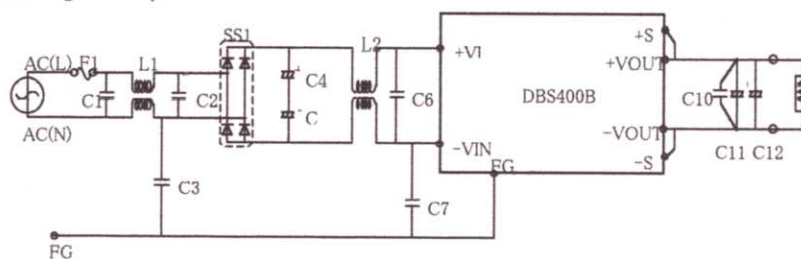
Date 2000/8/11

Test : LINE CONDUCTION
Model Name : DBS400B

○Photographs of Test Set-Up



- Testing circuitry



F1 : CES15 (SOC:15A 250V)
C1、C2 : CFJC22E474M (NITSUKO:0.47 μ F 250V)
C6 : CFJC22E224M (NITSUKO:0.22 μ F 250V)
C4、C5 : LGJ2E102M (NICHICON:1000 μ F 250V)
C3、C7 : DE1207-2E332M-KH (MURATA:3300pF 250V)
L1 : SC-05-20J (TOKIN:2.0mH min 5.0A)
L2 : SS28H-25045 (TOKIN:4.5mH min 2.5A)
SS1 : D25XB60 (SINDENGEN:25A 600V)
C10 : MDD21H104M5 (NITSUKO:0.1 μ F 50V)
C11、C12 : Table 1 (NIPPON CHEMI-CON)

Table 1

MODEL	C11	C12
DBS400B03	LZX10VB3300MK25	LZX10VB3300MK25
DBS400B05, 07	LZX10VB2200MK20	LZX10VB2200MK20
DBS400B12	LZX25VB1000MK20	LZX25VB1000MK20
DBS400B15, 18	LZX35VB1000MK25	LZX35VB1000MK25
DBS400B24, 28	LZY50VB820MK40	-

Fig 1. Testing circuitry