



# RADIATED EMISSION

Model Name : DBS 200B12

Model No. :

Serial No. :

Temperature : 25deg C

Detector : PEAK/QP

Points : 5

Polarization : Hori. & Vert.

Limit1: [EN 55022] Class B<3m>

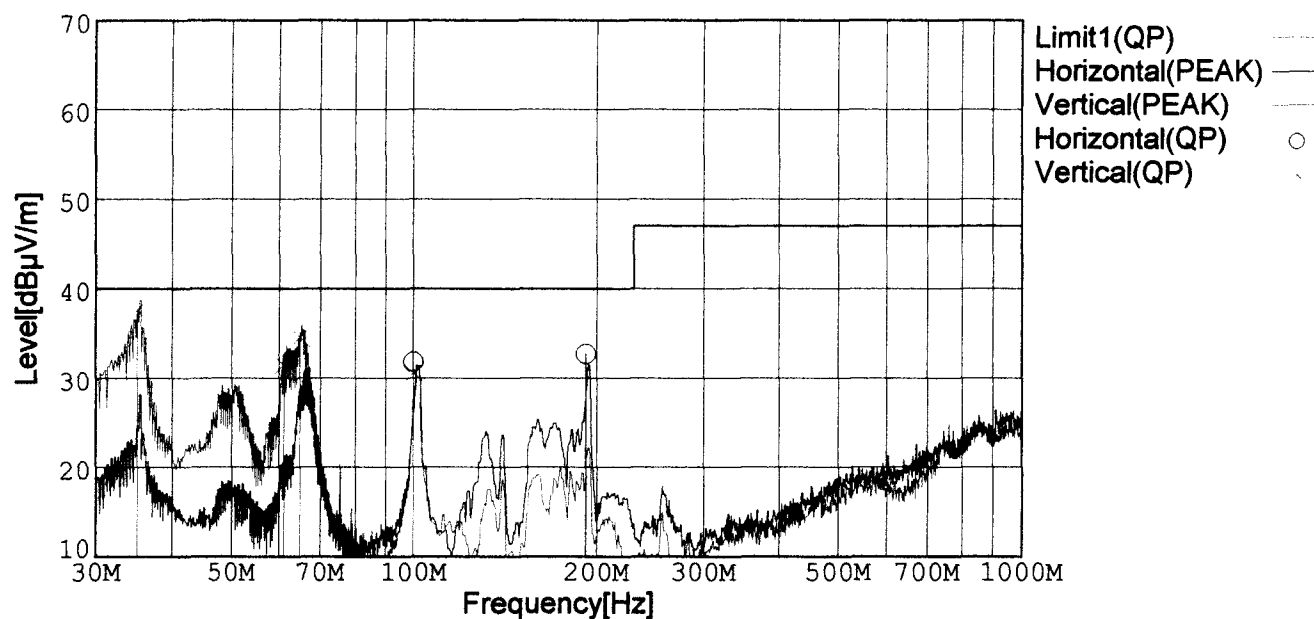
Humidity : 40%

Comment : AC230V Io=100%

Tested by : J.HATAGISHI

Date : 1999/4/9 19:51

EMI Receiver(s) : R3261A,ESPC



| Frequency [MHz] | Meter Reading [dBμV] | Antenna Factor[dB] | Cable Loss[dB] | Level [dBμV/m] | Angle[°] | Height [cm] | Pola. | Limit [dBμV/m] | Margin [dB] |
|-----------------|----------------------|--------------------|----------------|----------------|----------|-------------|-------|----------------|-------------|
| 100.039         | 47.2                 | 9.8                | -25.2          | 31.8           | 339      | 142         | Hori. | 40.0           | 8.2         |
| 192.010         | 48.0                 | 8.4                | -23.7          | 32.7           | 333      | 154         | Hori. | 40.0           | 7.3         |
| 34.891          | 50.2                 | 15.4               | -28.0          | 37.6           | 102      | 100         | Vert. | 40.0           | 2.4         |
| 64.767          | 53.0                 | 4.7                | -23.2          | 34.5           | 48       | 116         | Vert. | 40.0           | 5.5         |
| 60.899          | 49.9                 | 4.6                | -23.1          | 31.4           | 210      | 112         | Vert. | 40.0           | 8.6         |
| 100.039         | 46.1                 | 9.8                | -25.3          | 30.6           | 259      | 160         | Vert. | 40.0           | 9.4         |

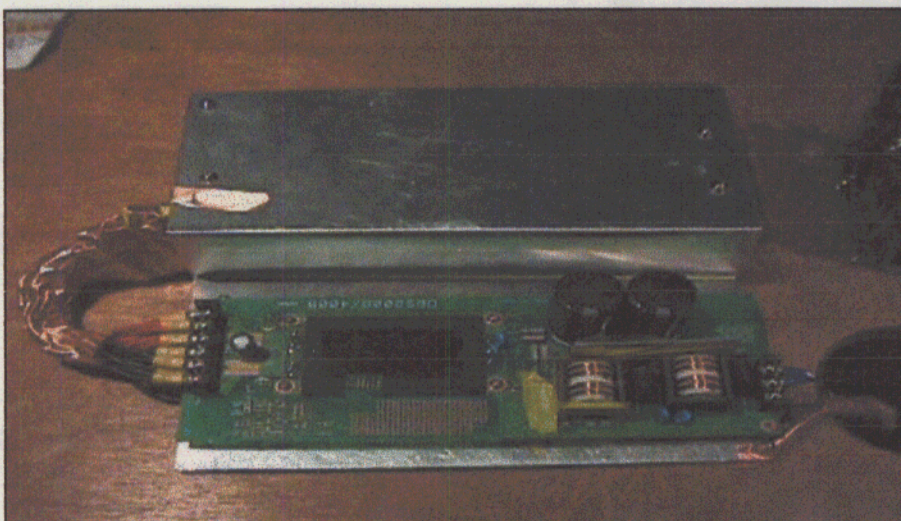
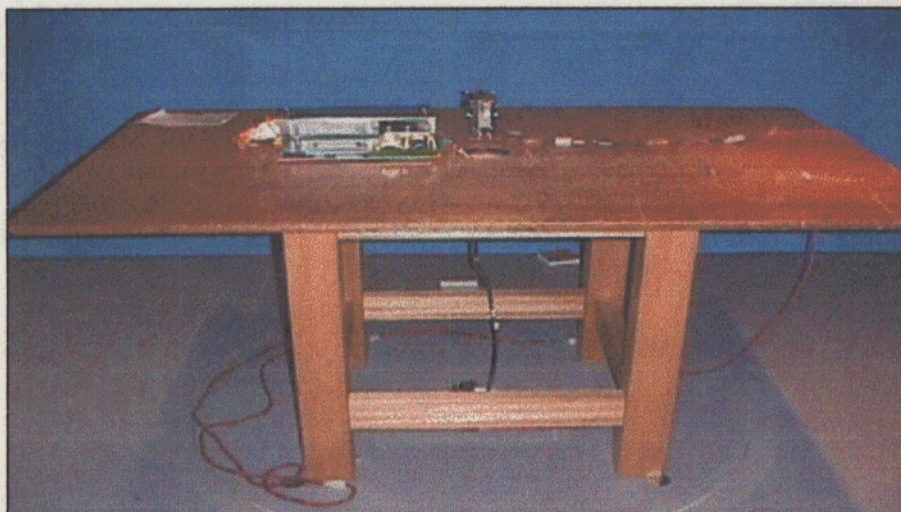


# Conditions

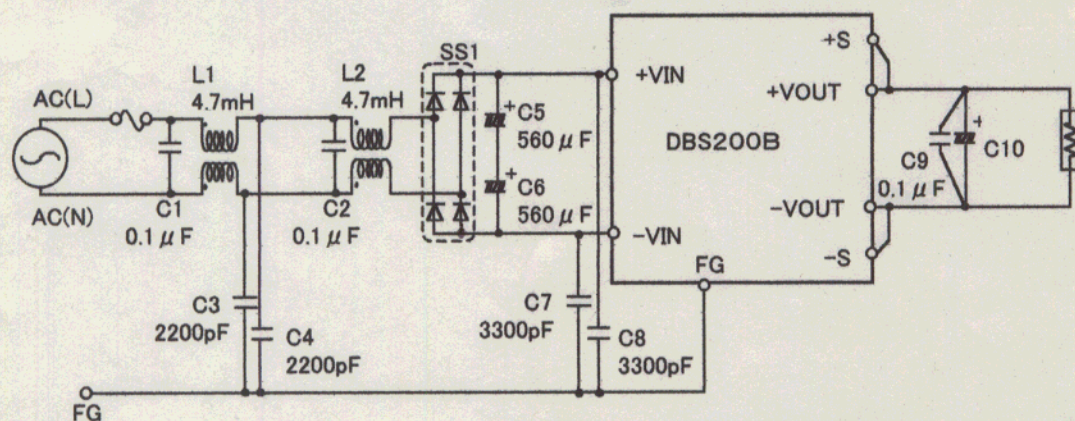
Date 1999/4/9

Test : RADIATED EMISSION  
Model Name : DBS200B

## Photographs of Test Set-Up



## Testing circuitry



- L1, L2 : SS35H-35047 (TOKIN)
- C5, C6 : 250V 560  $\mu$ F (NICHICON:GQseries)
- C10 : 10V 2200  $\mu$ F (DBS200B03,05,07)  
25V 1000  $\mu$ F (DBS200B12)
- SS1 : D10XB60 (SINDENG)

Fig. Testing circuitry



## LINE CONDUCTION

Model Name : DBS 200B12

Model No. :

Serial No. :

Temperature : 25deg C

Detector : PEAK/QP/Ave.

Points : 6

Line Mode : VA/VB

Limit1: [EN 55022] Class B(QP)

Limit2: [EN 55022] Class B(Ave.)

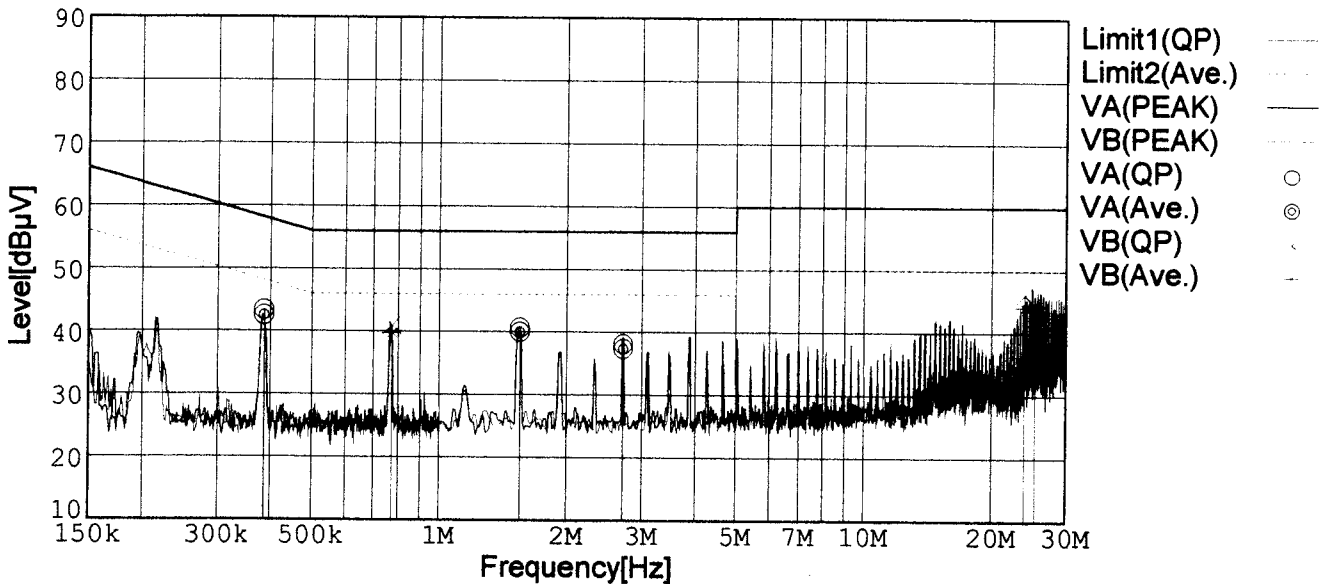
Humidity : 40%

Comment : AC230V Io=100%

Tested by : J.HATAGISHI

Date : 1999/4/9 19:33

EMI Receiver(s) : R3261A,ESPC



| Frequency [MHz] | Meter Reading (QP) [dBμV] | Meter Reading (Ave.) [dBμV] | Factor [dB] | Level (QP) [dBμV] | Level (Ave.) [dBμV] | Line | Limit (QP) [dBμV] | Limit (Ave.) [dBμV] | Margin (QP) [dB] | Margin (Ave.) [dB] |
|-----------------|---------------------------|-----------------------------|-------------|-------------------|---------------------|------|-------------------|---------------------|------------------|--------------------|
| 0.3854          | 33.2                      | 32.3                        | 10.2        | 43.4              | 42.5                | VA   | 58.2              | 48.2                | 14.8             | 5.7                |
| 1.5436          | 30.6                      | 29.9                        | 10.1        | 40.7              | 40.0                | VA   | 56.0              | 46.0                | 15.3             | 6.0                |
| 2.7016          | 28.0                      | 27.2                        | 10.1        | 38.1              | 37.3                | VA   | 56.0              | 46.0                | 17.9             | 8.7                |
| 0.7711          | 30.9                      | 29.7                        | 10.1        | 41.0              | 39.8                | VB   | 56.0              | 46.0                | 15.0             | 6.2                |
| 23.8711         | 35.3                      | 33.2                        | 10.9        | 46.2              | 44.1                | VB   | 60.0              | 50.0                | 13.8             | 5.9                |
| 25.2586         | 26.2                      | 22.8                        | 10.9        | 37.1              | 33.7                | VB   | 60.0              | 50.0                | 22.9             | 16.3               |



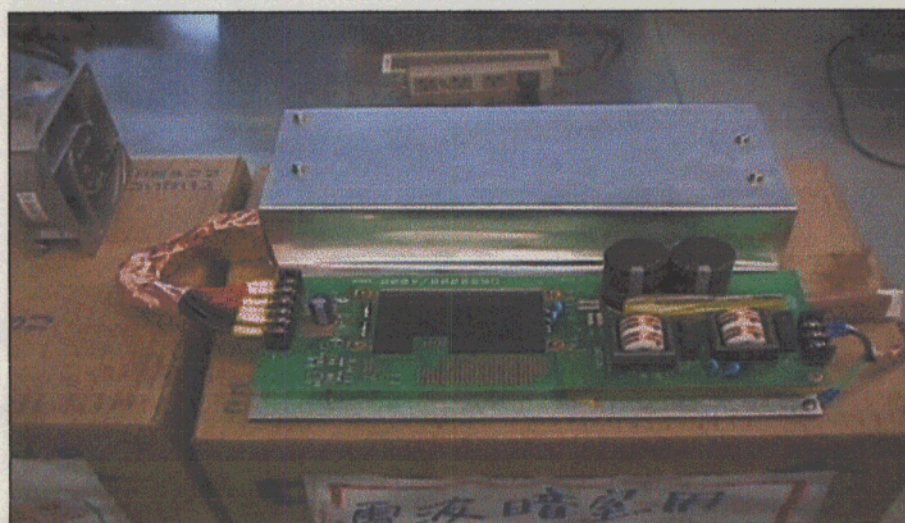
## Conditions

Date 1999/4/9

Test : LINE CONDUCTION

Model Name : DBS200B

○Photographs of Test Set-Up



○Testing circuitry

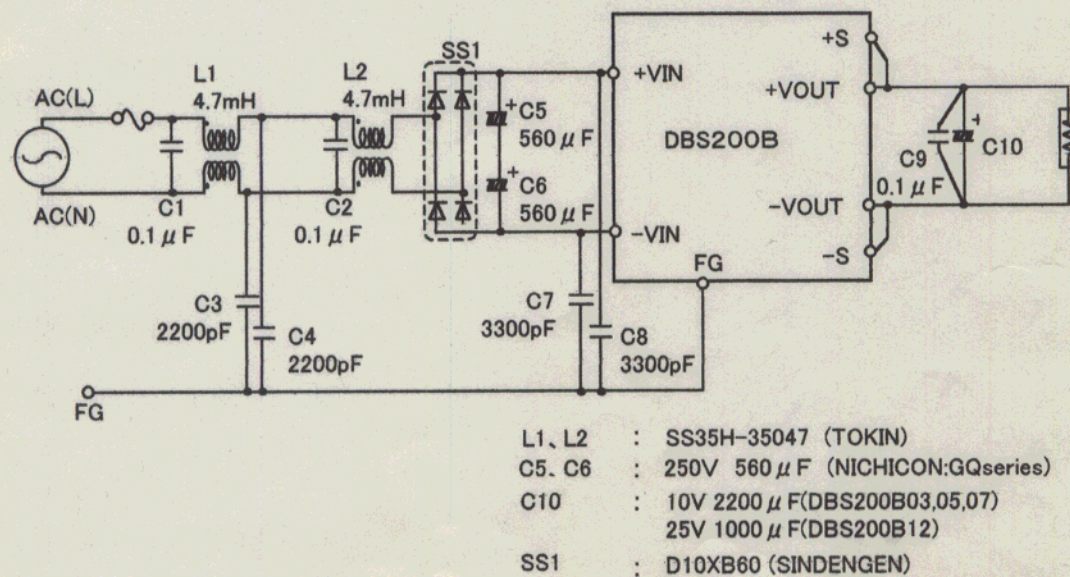


Fig. Testing circuitry