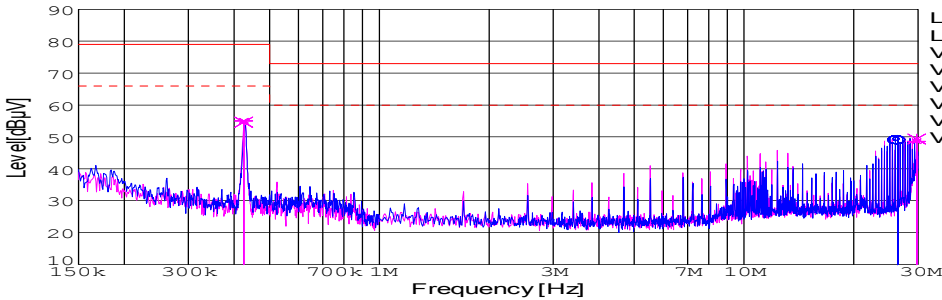
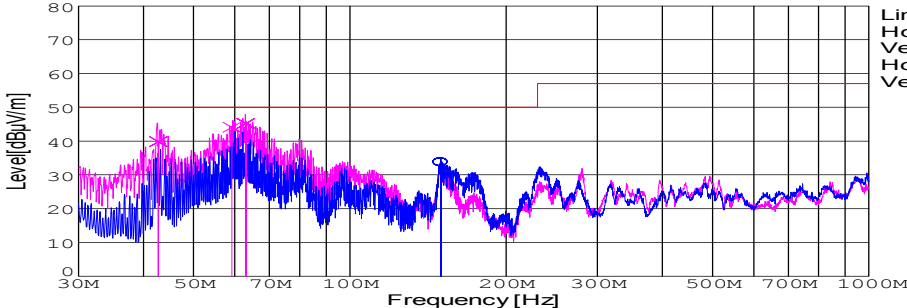


DATA SHEET							Date	12-Jan-07																																																									
Model	CQS48120-14						Temp.	25degC																																																									
Test	EMI Line conduction & Radiated emission						Humid.	45 %RH																																																									
							Tested by	T.Mizuhara																																																									
LINE CONDUCTION																																																																	
Model Name			CQS48120-14		Temp.		25degC																																																										
Model No.					Humi.		45%																																																										
Serial No.					Date		2007/1/11 21:00																																																										
Points			3		Test Equip.		R3132,ESPC																																																										
Detector			PEAK/QP/Ave.		Load Line																																																												
Line Mode			VA/VB		Comment																																																												
Power Supply			DC 48V																																																														
Limit1: [EN 55022]			Class A(QP)																																																														
Limit2: [EN 55022]			Class A(Ave.)																																																														
							Limit1(QP)		—																																																								
							Limit2(Ave.)		- - -																																																								
							VA(PEAK)		—																																																								
							VB(PEAK)		- - -																																																								
							VA(QP)		○																																																								
							VA(Ave.)		○																																																								
							VB(QP)		×																																																								
							VB(Ave.)		×																																																								
							Vin:DC48V																																																										
							Vo:12V Io:14A																																																										
<table><tr><th>Frequency [MHz]</th><th>Meter Reading (Ave.) [dBuV]</th><th>Meter Reading (QP) [dBuV]</th><th>Factor [dB]</th><th>Level(Ave.) [dBuV]</th><th>Level(QP) [dBuV]</th><th>Line</th><th>Limit(Ave.) [dBuV]</th><th>Limit(QP) [dBuV]</th><th>Margin(Ave.) [dB]</th><th>Margin(QP) [dB]</th></tr><tr><td>26.3361</td><td>38.6</td><td>38.5</td><td>10.4</td><td>49</td><td>48.9</td><td>VA</td><td>60</td><td>73</td><td>11</td><td>24.1</td></tr><tr><td>0.4252</td><td>45.2</td><td>44.7</td><td>9.9</td><td>55.1</td><td>54.6</td><td>VB</td><td>66</td><td>79</td><td>10.9</td><td>24.4</td></tr><tr><td>29.7346</td><td>38.1</td><td>38.9</td><td>10.5</td><td>48.6</td><td>49.4</td><td>VB</td><td>60</td><td>73</td><td>11.4</td><td>23.6</td></tr></table>											Frequency [MHz]	Meter Reading (Ave.) [dBuV]	Meter Reading (QP) [dBuV]	Factor [dB]	Level(Ave.) [dBuV]	Level(QP) [dBuV]	Line	Limit(Ave.) [dBuV]	Limit(QP) [dBuV]	Margin(Ave.) [dB]	Margin(QP) [dB]	26.3361	38.6	38.5	10.4	49	48.9	VA	60	73	11	24.1	0.4252	45.2	44.7	9.9	55.1	54.6	VB	66	79	10.9	24.4	29.7346	38.1	38.9	10.5	48.6	49.4	VB	60	73	11.4	23.6											
Frequency [MHz]	Meter Reading (Ave.) [dBuV]	Meter Reading (QP) [dBuV]	Factor [dB]	Level(Ave.) [dBuV]	Level(QP) [dBuV]	Line	Limit(Ave.) [dBuV]	Limit(QP) [dBuV]	Margin(Ave.) [dB]	Margin(QP) [dB]																																																							
26.3361	38.6	38.5	10.4	49	48.9	VA	60	73	11	24.1																																																							
0.4252	45.2	44.7	9.9	55.1	54.6	VB	66	79	10.9	24.4																																																							
29.7346	38.1	38.9	10.5	48.6	49.4	VB	60	73	11.4	23.6																																																							
RADIATED EMISSION																																																																	
Model Name			CQS48120-14		Temp.		25degC																																																										
Model No.					Humi.		45%																																																										
Serial No.					Date		2007/1/12 10:42																																																										
Points			4		Test Equip.		R3132,ESPC																																																										
Detector			PEAK/QP		Load Line																																																												
Polarization			Hori. & Vert.		Comment																																																												
Power Supply			DC 48V																																																														
Limit: [EN 55022]			Class A<3m>																																																														
							Limit(QP)		—																																																								
							Horizontal(PEAK)		—																																																								
							Vertical(PEAK)		- - -																																																								
							Horizontal(QP)		—																																																								
							Vertical(QP)		- - -																																																								
							Horizontal(QP)		○																																																								
							Vertical(QP)		×																																																								
							Vin:DC48V																																																										
							Vo:12V Io:14A																																																										
<table><tr><th>Frequency [MHz]</th><th>MeterReading (QP) [dBuV]</th><th>Ant. Type</th><th>Antenna Factor [dB/m]</th><th>Cable & Preamp [dB]</th><th>Level(QP) [dBuV/m]</th><th>Angle [°]</th><th>Height [cm]</th><th>Polar.</th><th>Limit [dBuV/m]</th><th>Margin [dB]</th></tr><tr><td>149.75</td><td>51.3</td><td>BL</td><td>10.6</td><td>-28.2</td><td>33.7</td><td>352</td><td>160</td><td>Hori.</td><td>50</td><td>16.3</td></tr><tr><td>42.739</td><td>56.7</td><td>BL</td><td>11.5</td><td>-28.4</td><td>39.8</td><td>355</td><td>101</td><td>Vert.</td><td>50</td><td>10.2</td></tr><tr><td>59.237</td><td>64.6</td><td>BL</td><td>4.8</td><td>-25.3</td><td>44.1</td><td>335</td><td>121</td><td>Vert.</td><td>50</td><td>5.9</td></tr><tr><td>63.018</td><td>65.8</td><td>BL</td><td>4.8</td><td>-25.4</td><td>45.2</td><td>356</td><td>117</td><td>Vert.</td><td>50</td><td>4.8</td></tr></table>											Frequency [MHz]	MeterReading (QP) [dBuV]	Ant. Type	Antenna Factor [dB/m]	Cable & Preamp [dB]	Level(QP) [dBuV/m]	Angle [°]	Height [cm]	Polar.	Limit [dBuV/m]	Margin [dB]	149.75	51.3	BL	10.6	-28.2	33.7	352	160	Hori.	50	16.3	42.739	56.7	BL	11.5	-28.4	39.8	355	101	Vert.	50	10.2	59.237	64.6	BL	4.8	-25.3	44.1	335	121	Vert.	50	5.9	63.018	65.8	BL	4.8	-25.4	45.2	356	117	Vert.	50	4.8
Frequency [MHz]	MeterReading (QP) [dBuV]	Ant. Type	Antenna Factor [dB/m]	Cable & Preamp [dB]	Level(QP) [dBuV/m]	Angle [°]	Height [cm]	Polar.	Limit [dBuV/m]	Margin [dB]																																																							
149.75	51.3	BL	10.6	-28.2	33.7	352	160	Hori.	50	16.3																																																							
42.739	56.7	BL	11.5	-28.4	39.8	355	101	Vert.	50	10.2																																																							
59.237	64.6	BL	4.8	-25.3	44.1	335	121	Vert.	50	5.9																																																							
63.018	65.8	BL	4.8	-25.4	45.2	356	117	Vert.	50	4.8																																																							

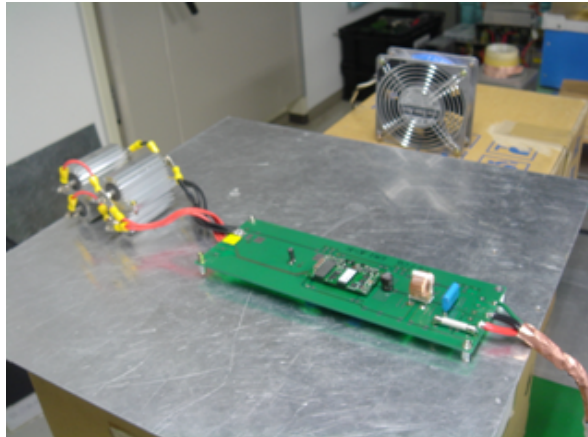


TEST :EMI

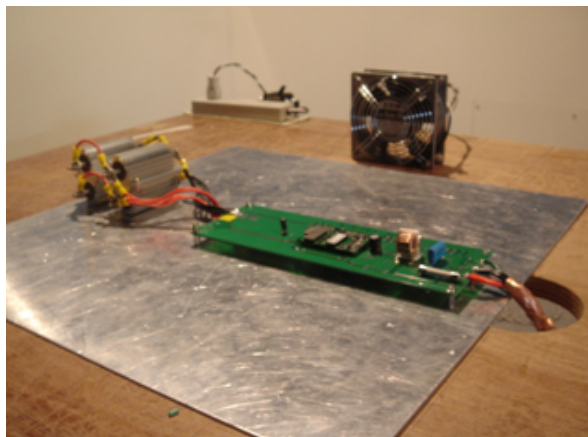
Model Name :CQS48120-14

Date 2007/1/12

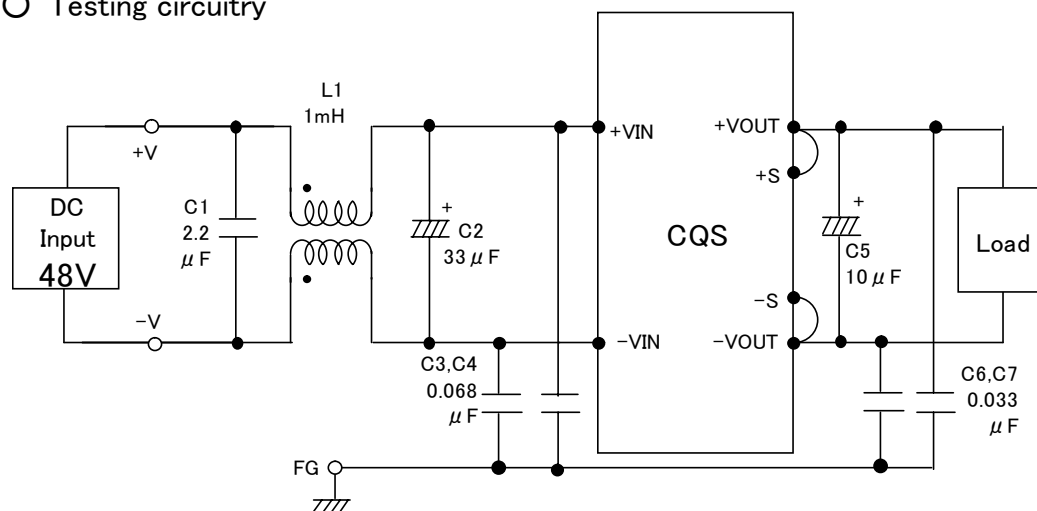
○Photographs of Test Set-Up
LINE CONDUCTION



RADIATED EMISSION



○ Testing circuitry



- L1 : 1mH 5A Inductor
- C1 : 2.2 μ F Film capacitor
- C2 : 100V 33 μ F Electric capacitor
- C3,4 : 630V 0.068 μ F Film capacitor
- C5 : 25V 10 μ F Electric capacitor
- C6,7 : 630V 0.033 μ F Film capacitor