

DATA SHEET							Date	12-Aug-03		
Model	CQS48033-45						Temp.	25 degreeC		
Test	EMI Line conduction & Radiated emission						Humid.	45 %RH		
							Tested by	R.Sakai		
LINE CONDUCTION										
Model Name : CQS48033-45			Temp. : 25							
Model No. :			Humi. : 45							
Serial No. :			Date : 2003/8/12 13:51							
Points : 1			Test Equip. : R3132,ESPC							
Detector : PEAK/QP/Ave.			Comment : R.Sakai							
Line Mode : VB			Load 100%(+3.3V 45A)							
Power Supply : DC 48V										
Limit1: [EN 55022] Class A(QP)										
Limit2: [EN 55022] Class A(Ave.)										
							Limit1(QP) Limit2(Ave.) VA(PEAK) VB(PEAK) VB(QP) VB(Ave.)			
							DC 48V Load 100%(+3.3V 45A)			
Frequency [MHz]	Meter Reading (Ave.)[dBuV]	Meter Reading (QP)[dBuV]	Factor [dB]	Level(Ave.) [dBuV]	Level(QP) [dBuV]	Line	Limit(Ave.) [dBuV]	Limit(QP) [dBuV]	Margin(Ave.) [dB]	Margin(QP) [dB]
0.4109	45	45	9.9	54.9	54.9	VB	66	79	11.1	24.1
RADIATED EMISSION										
Model Name : CQS48033-45			Temp. : 25							
Model No. :			Humi. : 45							
Serial No. :			Date : 2003/8/12 20:17							
Points : 1			Test Equip. : R3132,ESPC							
Detector : PEAK/QP			Comment : R.Sakai							
Polarization : Horizontal			Load 100% (+3.3V 45A)							
Power Supply : DC 48V										
Limit: [EN 55022] Class A<3m>										
							Limit(QP) Horizontal(PEAK) Vertical(PEAK) Horizontal(QP)			
							DC 48V Load 100% (+3.3V 45A)			
Frequency [MHz]	MeterReading (QP)[dBuV]	Ant. Type	Antenna Factor[dB/m]	Cable & Preamp[dB]	Level(QP) [dBuV/m]	Angle [°]	Height[cm]	Polar.	Limit [dBuV/m]	Margin [dB]
72.803	72.7	BL	6	-31.9	46.8	359	160	Hori.	50	3.2

COSEL

○ Testing circuitry

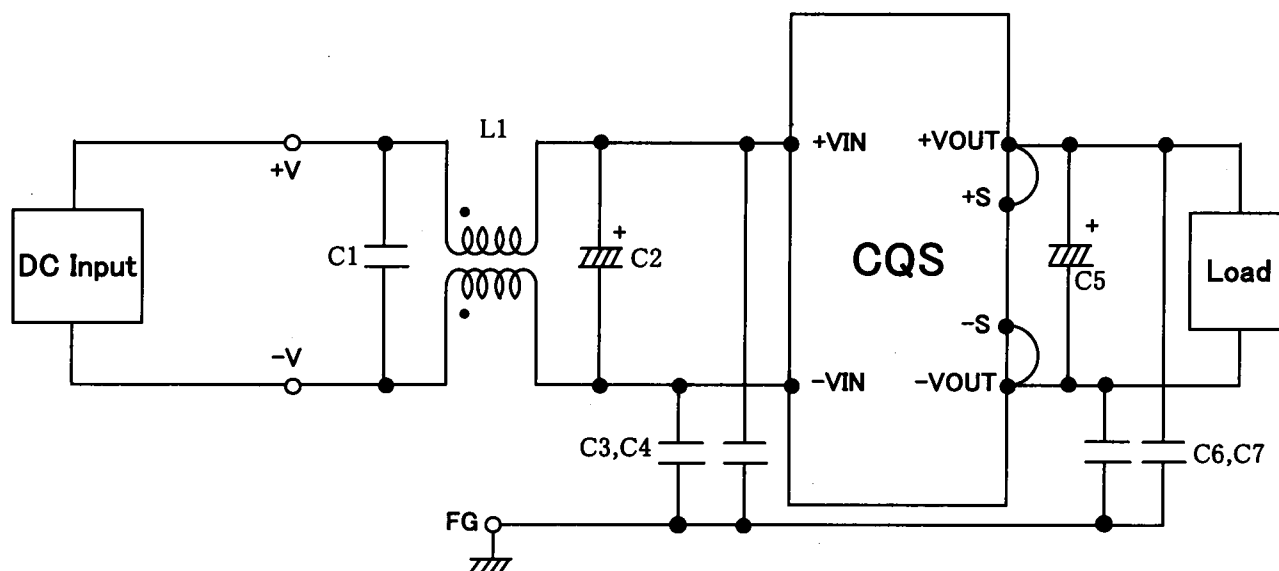


Fig.1 Testing circuitry

- L1 : 1mH SC-05-10J (TOKIN)
 C1 : 2.2 μ F MDS22A225K (NITSUKO)
 C2 : 100V 33 μ F PWseries (nichicon)
 C3,4 : 630V 0.068 μ F MDS22J683K (NITSUKO)
 C5 : 10V 10 μ F PMseries (nichicon)
 C6,7 : 630V 0.033 μ F MDS22J333K (NITSUKO)

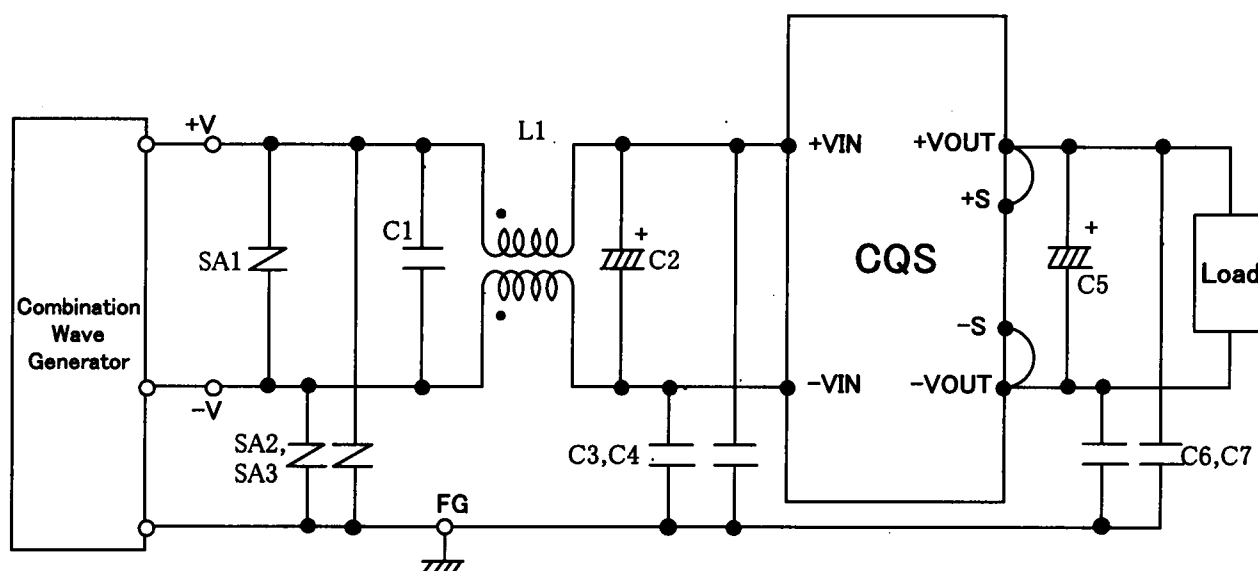


Fig.2 Surge immunity Testing circuitry

- L1 : 1mH SC-05-10J (TOKIN)
 C1 : 2.2 μ F MDS22A225K (NITSUKO)
 C2 : 100V 33 μ F PWseries (nichicon)
 C3,4 : 630V 0.068 μ F MDS22J683K (NITSUKO)
 C5 : 10V 10 μ F PMseries (nichicon)
 C6,7 : 630V 0.033 μ F MDS22J333K (NITSUKO)
 SA1~3: ERZV10D101 (100V)