



RADIATED EMISSION

Model Name : CDS6002412

Model No. :

Serial No. :

Points : 5

Detector : PEAK/QP

Polarization : Hori. & Vert.

Limit: [EN 55022] Class A<3m>

Power Supply

Temp.

Humi.

Date

Test Equip.

Tested by

: Vin=24V Vout=12.5V Iout=48A

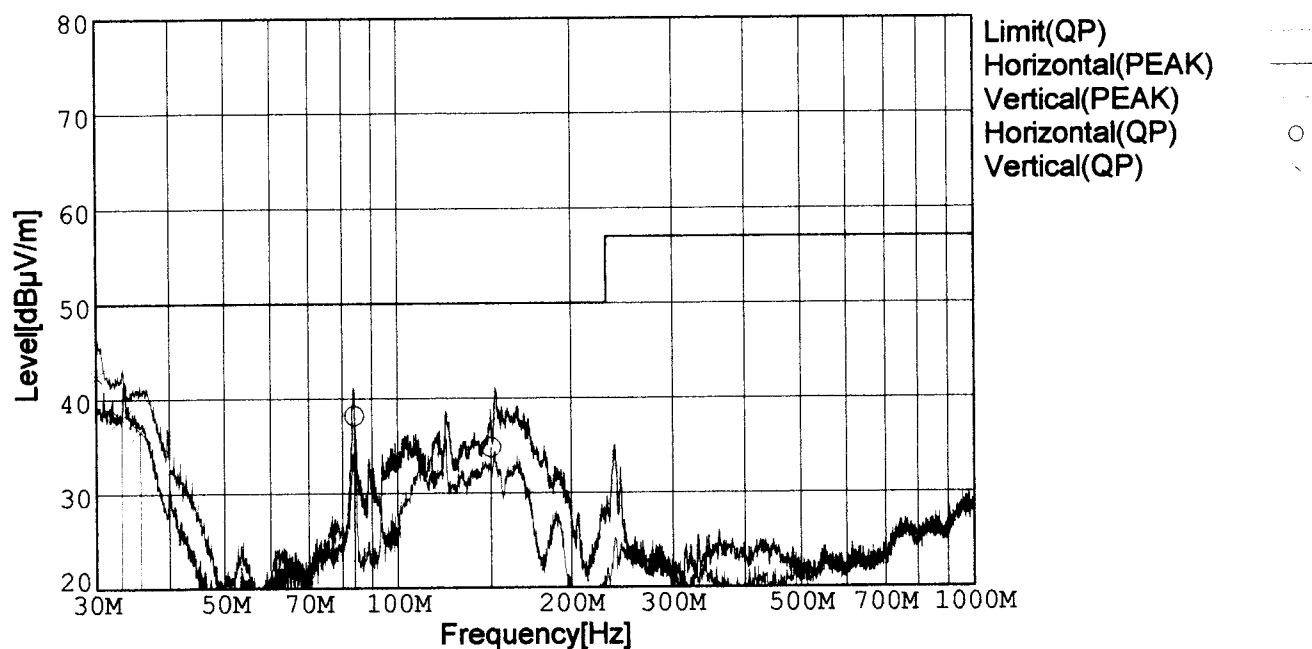
: 25deg

: 45%

: 2001/8/17 17:05

: R3132,ESPC

: R.Sakai



Frequency [MHz]	Meter Reading (QP) [dBμV]	Ant. Type	Antenna Factor [dB/m]	Cable & Preamp [dB]	Level (QP) [dBμV/m]	Angle[°]	Height [cm]	Polar.	Limit [dBμV/m]	Margin [dB]
84.007	62.1	BL	7.8	-31.7	38.2	126	160	Hori.	50.0	11.8
144.716	55.5	BL	10.7	-31.4	34.8	1	144	Hori.	50.0	15.2
30.036	56.2	BL	18.2	-32.1	42.3	181	103	Vert.	50.0	7.7
33.152	53.4	BL	16.6	-32.1	37.9	177	100	Vert.	50.0	12.1
35.733	53.4	BL	15.3	-32.1	36.6	200	100	Vert.	50.0	13.4

BL: Biconi-Log

Conditions

Date 2001/8/17

Test : RADIATED EMISSION
Model Name : CDS6002412

○Photographs of Test Set-Up



○Testing circuitry

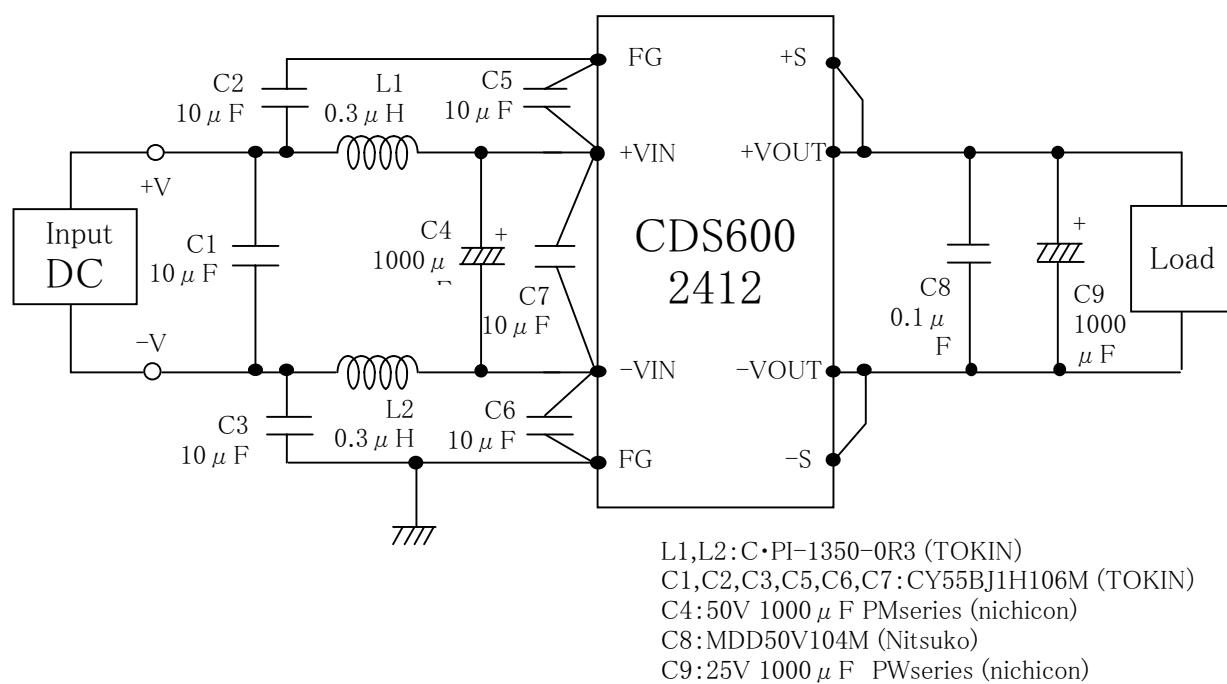


Fig. Testing circuitry



LINE CONDUCTION

Model Name : CDS6002412

Model No. :

Serial No. :

Points : 6

Detector : PEAK/QP/Ave.

Line Mode : VA/VB

Limit1: [EN 55022] Class A(QP)

Limit2: [EN 55022] Class A(Ave.)

Power Supply : Vin=24V Vout=12.5V Iout=48A

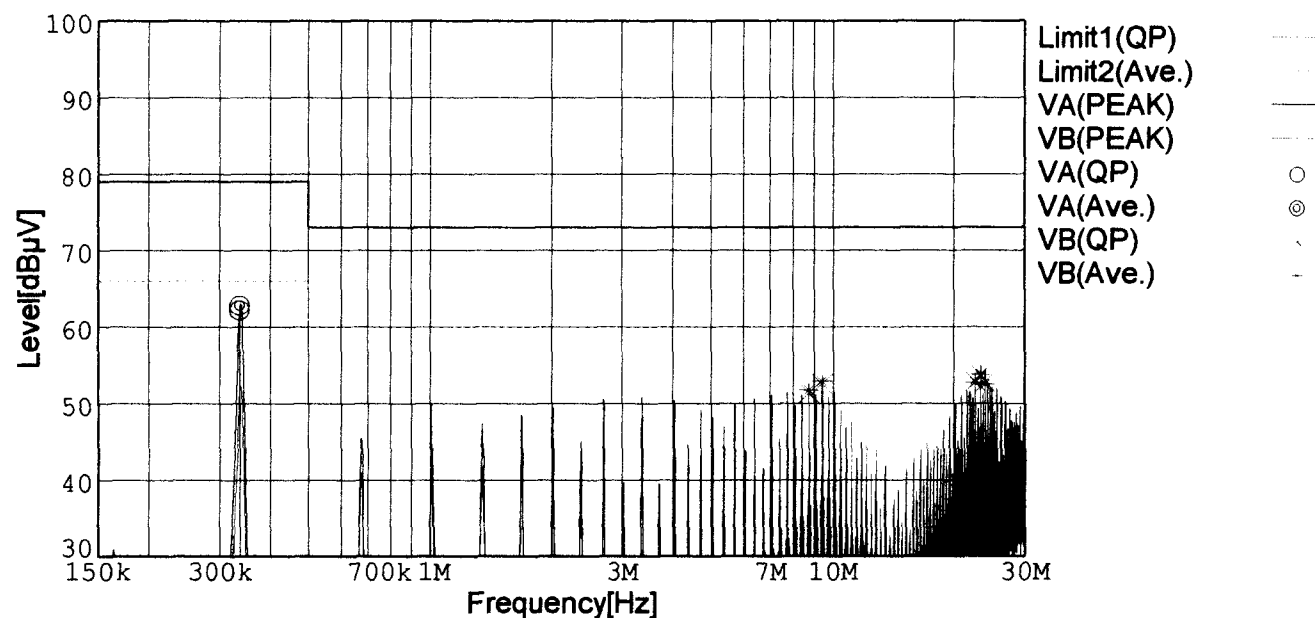
Temp. : 25deg

Humi. : 45%

Date : 2001/7/28 23:29

Test Equip. : R3132,ESPC

Tested by : K.Mizui



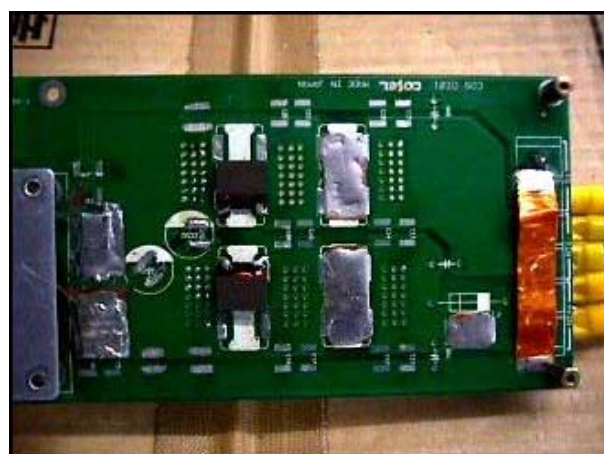
Frequency [MHz]	Meter Reading (QP) [dBμV]	Meter Reading (Ave.) [dBμV]	Factor [dB]	Level (QP) [dBμV]	Level (Ave.) [dBμV]	Line	Limit (QP) [dBμV]	Limit (Ave.) [dBμV]	Margin (QP) [dB]	Margin (Ave.) [dB]
0.3355	52.4	53.0	9.8	62.2	62.8	VA	79.0	66.0	16.8	3.2
8.7284	41.2	41.6	10.1	51.3	51.7	VB	73.0	60.0	21.7	8.3
9.4003	42.5	42.8	10.1	52.6	52.9	VB	73.0	60.0	20.4	7.1
22.4881	42.5	42.4	10.3	52.8	52.7	VB	73.0	60.0	20.2	7.3
23.1556	43.4	43.5	10.3	53.7	53.8	VB	73.0	60.0	19.3	6.2
23.8237	42.5	42.2	10.3	52.8	52.5	VB	73.0	60.0	20.2	7.5

Conditions

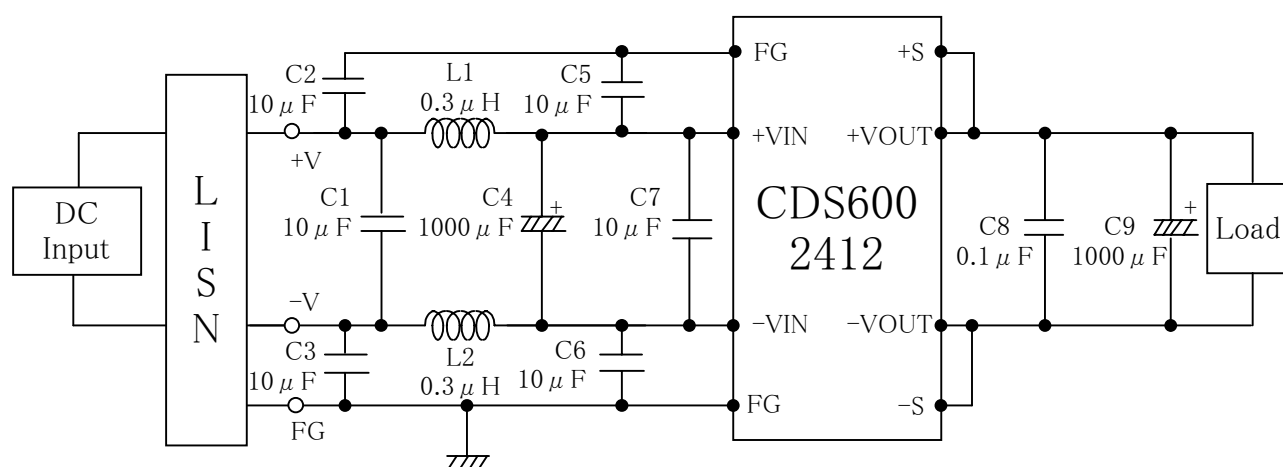
Date 2001/7/28

Test : LINE CONDUCTION
Model Name : CDS6002412

○Photographs of Test Set-Up



○Testing circuitry



L1,L2:C・PI-1350-0R3 (TOKIN)
C1,C2,C3,C5,C6,C7:CY55BJ1H106M (TOKIN)
C4:50V 1000 μ F PMseries (nichicon)
C8:MDD50V104M (Nitsuko)
C9:25V 1000 μ F PWseries (nichicon)

Fig. Testing circuitry