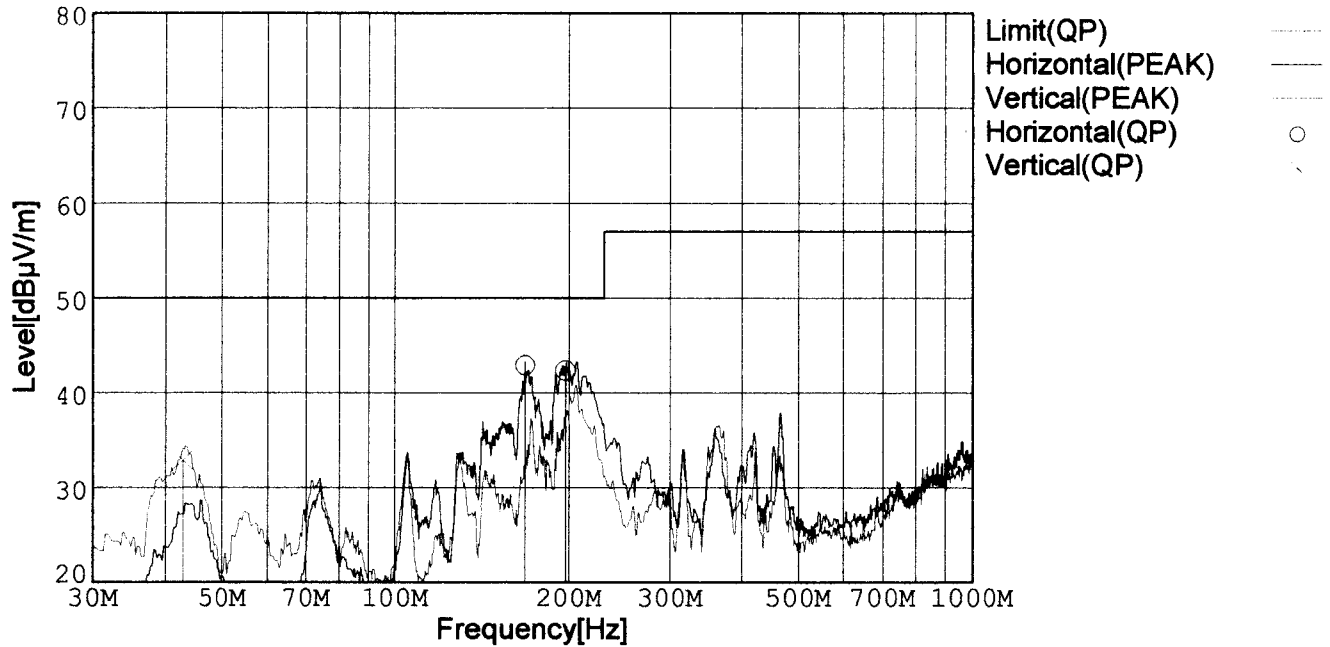


## RADIATED EMISSION

Model Name : CDS4004815  
Model No. :  
Serial No. :  
Detector : PEAK/QP  
Polarization : Hori. & Vert.

Tested by : J.Hatagishi  
Temp. : 25degC  
Humi. : 40%  
Date : 2002/3/9 6:49  
EMI Receiver(s) : R3261A,ESPC  
Comment : Vin=DC48V Io=100%(15V 34A)

Limit: [EN 55022] Class A<3m>



Frequency [MHz]	Meter Reading (QP) [dBμV]	Ant. Type	Antenna Factor [dB/m]	Cable & Preamp [dB]	Level (QP) [dBμV/m]	Angle[°]	Height [cm]	Polar.	Limit [dBμV/m]	Margin [dB]
167.694	57.7	BL	-27.7	12.9	42.9	40	145	Hori.	50.0	7.1
197.309	57.7	BL	-27.4	12.0	42.3	90	147	Hori.	50.0	7.7
42.727	47.0	BL	-28.7	14.6	32.9	17	105	Vert.	50.0	17.1

BL: Biconi-Log

## Conditions

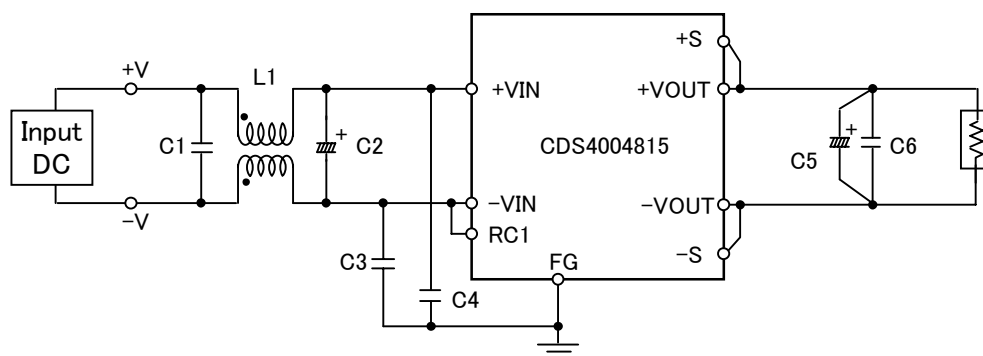
Date 2002/3/9

Test : RADIATED EMISSION  
Model Name : CDS4004815

### ○Photographs of Test Set-Up



### ○Testing circuitry



L1	: 1mH	SC15-10JH (TOKIN)
C1	: 0.68 $\mu$ F	CFJC22E684M (NITSUKO)
C2	: 100V 470 $\mu$ F	PM series (NICHICON)
C3,C4	: 630V 0.033 $\mu$ F	MDS22J333K (NITSUKO)
C5	: 35V 330 $\mu$ F	PW series (NICHICON)
C6	: 50V 0.1 $\mu$ F	MDD21H104M (NITSUKO)

Fig. Testing circuitry



# LINE CONDUCTION

Model Name : CDS4004815

Model No. :

Serial No. :

Points : 4

Detector : PEAK/QP/Ave.

Line Mode : VA/VB

Limit1: [EN 55022] Class A(QP)

Limit2: [EN 55022] Class A(Ave.)

Tested by : J.Hatagishi

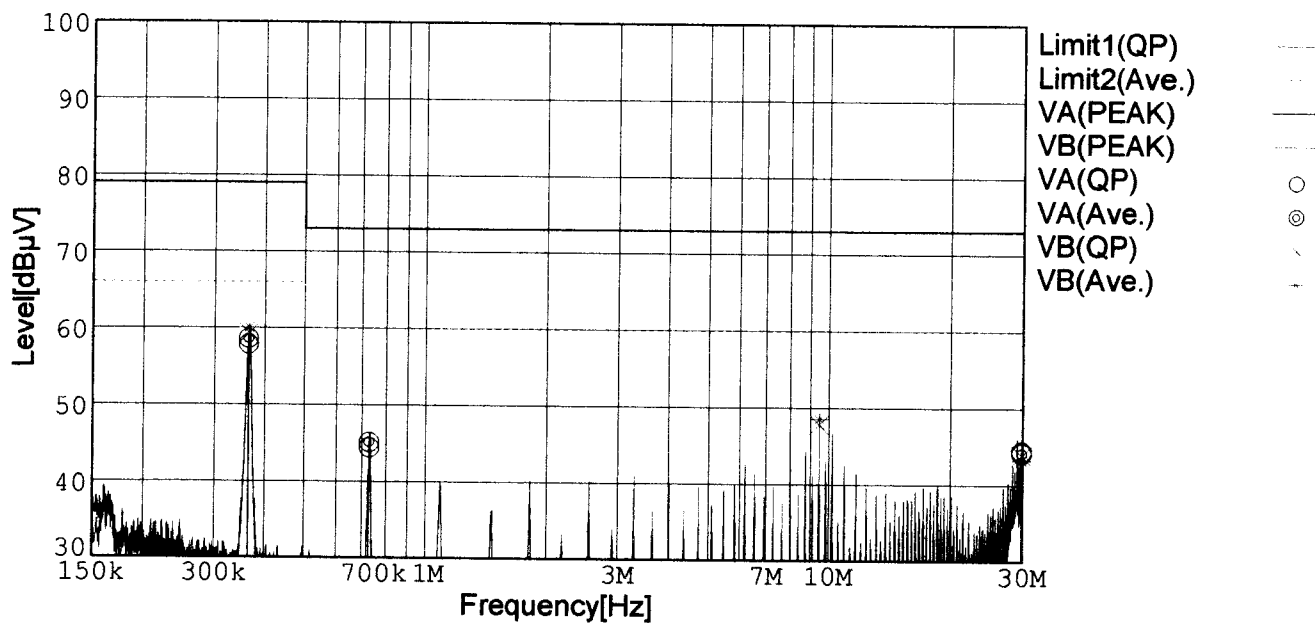
Temp. : 25degC

Humi. : 40%

Date : 2002/3/8 15:04

Test Equip. : R3132,ESPC

Comment : Vin=DC48V Io=100% (15V 34A)



Frequency [MHz]	Meter Reading (QP) [dBμV]	Meter Reading (Ave.) [dBμV]	Factor [dB]	Level (QP) [dBμV]	Level (Ave.) [dBμV]	Line	Limit (QP) [dBμV]	Limit (Ave.) [dBμV]	Margin (QP)[dB]	Margin (Ave.) [dB]
0.3638	48.0	48.7	9.8	57.8	58.5	VA	79.0	66.0	21.2	7.5
0.7283	34.5	35.2	9.9	44.4	45.1	VA	73.0	60.0	28.6	14.9
29.8496	34.0	33.7	10.4	44.4	44.1	VA	73.0	60.0	28.6	15.9
0.3642	49.5	50.2	9.8	59.3	60.0	VB	79.0	66.0	19.7	6.0
9.4659	37.7	38.4	10.1	47.8	48.5	VB	73.0	60.0	25.2	11.5
29.8492	33.4	32.8	10.4	43.8	43.2	VB	73.0	60.0	29.2	16.8

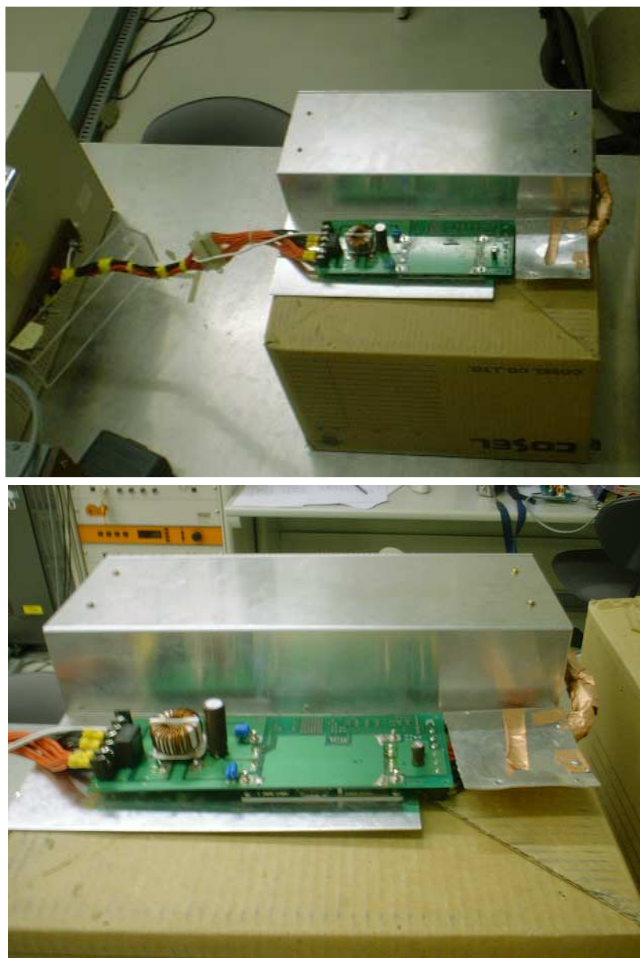
## Conditions

Date 2002/3/8

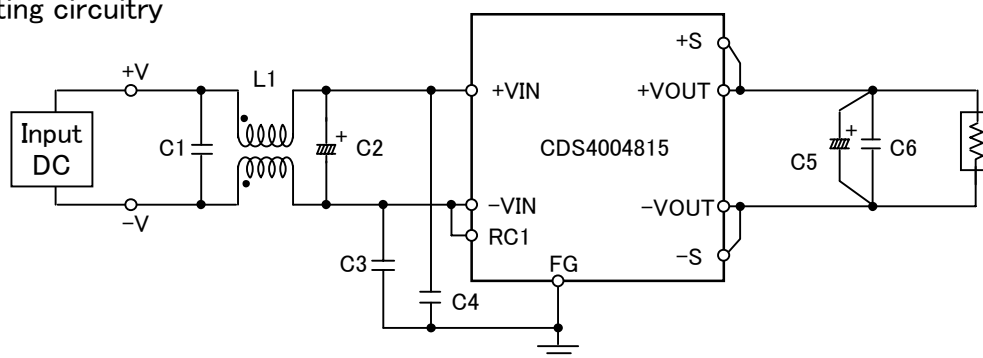
Test : LINE CONDUCTION

Model Name : CDS4004815

○Photographs of Test Set-Up



○Testing circuitry



L1	: 1mH	SC15-10JH (TOKIN)
C1	: 0.68 $\mu$ F	CFJC22E684M (NITSUKO)
C2	: 100V 470 $\mu$ F	PM series (NICHICON)
C3,C4	: 630V 0.033 $\mu$ F	MDS22J333K (NITSUKO)
C5	: 35V 330 $\mu$ F	PW series (NICHICON)
C6	: 50V 0.1 $\mu$ F	MDD21H104M (NITSUKO)

Fig. Testing circuitry