



RADIATED EMISSION

Model Name : CDS4004802

Model No. :

Serial No. :

Points : 4

Detector : PEAK/QP

Polarization : Hori. & Vert.

Limit: [EN 55022] Class A<3m>

Tested by : J.Hatagishi

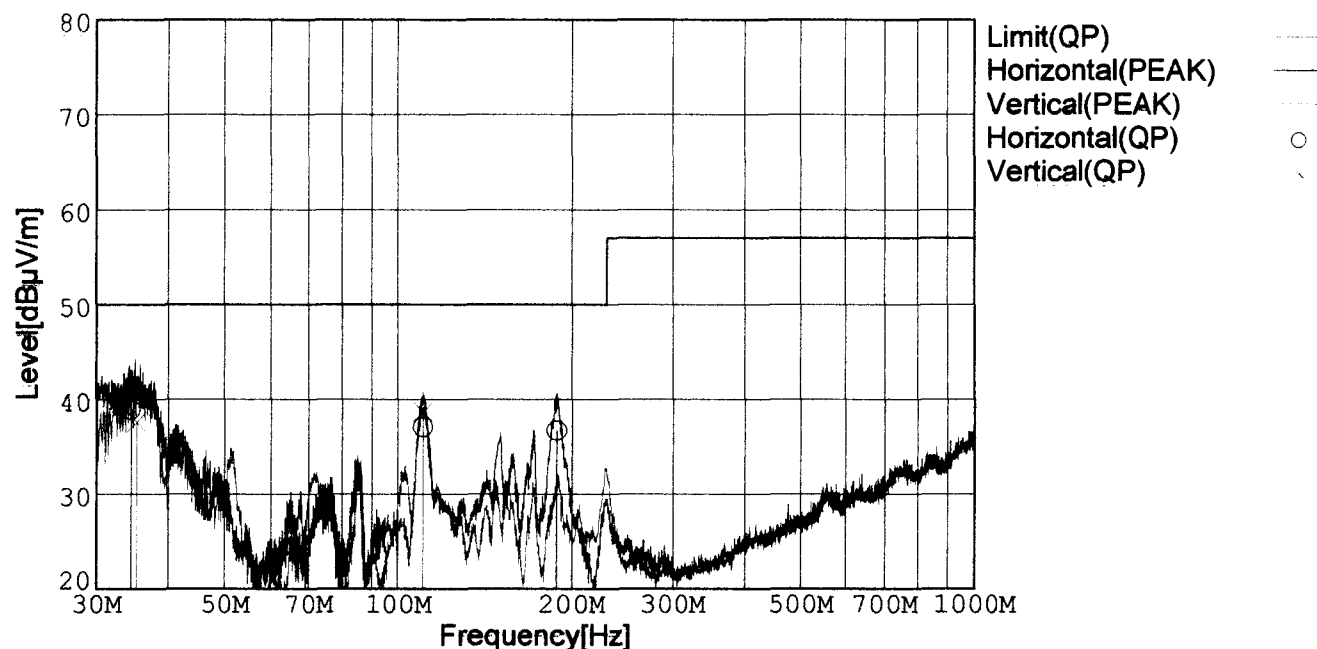
Temp. : 25degC

Humi. : 40%

Date : 2002/3/9 5:49

Test Equip. : R3132,ESPC

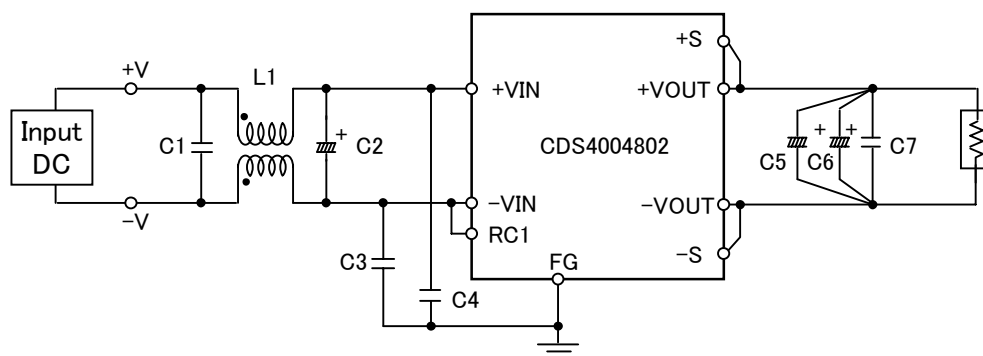
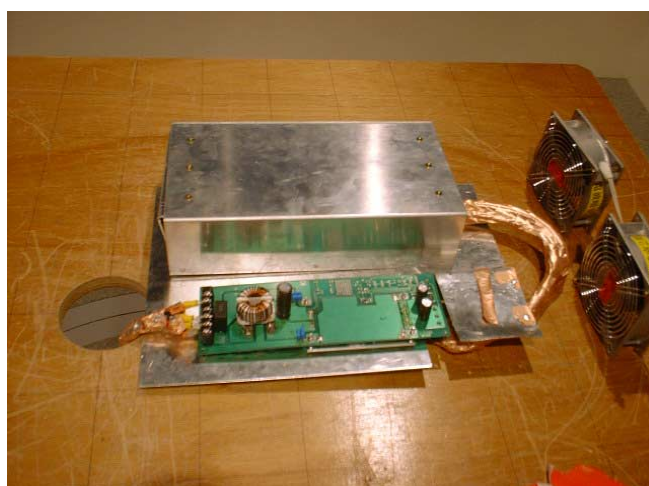
Comment : Vin=DC48V Io=100% (2V 100A)



Frequency [MHz]	Meter Reading (QP) [dBμV]	Ant. Type	Antenna Factor [dB/m]	Cable & Preamp [dB]	Level (QP) [dBμV/m]	Angle[°]	Height [cm]	Polar.	Limit [dBμV/m]	Margin [dB]
34.365	44.6	BL	16.0	-21.7	38.9	260	140	Hori.	50.0	11.1
110.337	47.4	BL	10.7	-21.1	37.0	290	133	Hori.	50.0	13.0
188.847	49.2	BL	8.3	-20.8	36.7	218	141	Hori.	50.0	13.3
35.171	43.6	BL	15.6	-21.6	37.6	337	129	Vert.	50.0	12.4
110.260	49.1	BL	10.7	-21.1	38.7	125	117	Vert.	50.0	11.3

BL: Biconi-Log

○Photographs of Test Set-Up



L1	:1mH	SC15-10JH (TOKIN)
C1	:0.68 μ F	CFJC22E684M (NITSUKO)
C2	:100V 470 μ F	PM series (NICHICON)
C3,C4	:630V 0.033 μ F	MDS22J333K (NITSUKO)
C5,C6	:10V 3300 μ F	PW series (NICHICON)
C7	:50V 0.1 μ F	MDD21H104M (NITSUKO)

Fig. Testing circuitry



LINE CONDUCTION

Model Name : CDS4004802

Model No. :

Serial No. :

Points : 4

Detector : PEAK/QP/Ave.

Line Mode : VA/VB

Limit1: [EN 55022] Class A(QP)

Limit2: [EN 55022] Class A(Ave.)

Tested by : J.Hatagishi

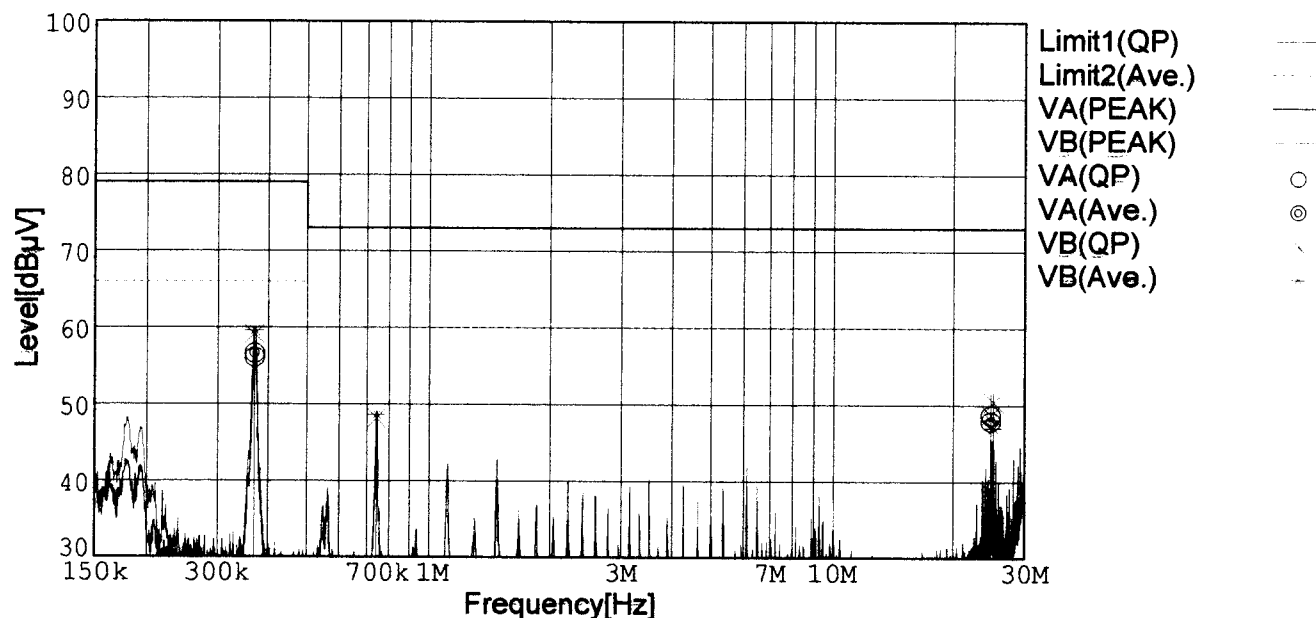
Temp. : 25degC

Humi. : 40%

Date : 2002/3/9 6:18

Test Equip. : R3132,ESPC

Comment : Vin=DC48V Io=100% (2V 100A)



Frequency [MHz]	Meter Reading (QP) [dBμV]	Meter Reading (Ave.) [dBμV]	Factor [dB]	Level (QP) [dBμV]	Level (Ave.) [dBμV]	Line	Limit (QP) [dBμV]	Limit (Ave.) [dBμV]	Margin (QP)[dB]	Margin (Ave.) [dB]
0.3703	46.2	46.8	9.8	56.0	56.6	VA	79.0	66.0	23.0	9.4
24.6597	38.4	37.5	10.3	48.7	47.8	VA	73.0	60.0	24.3	12.2
0.3701	49.3	49.8	9.8	59.1	59.6	VB	79.0	66.0	19.9	6.4
0.7398	38.2	38.7	9.9	48.1	48.6	VB	73.0	60.0	24.9	11.4
24.6559	38.4	37.8	10.3	48.7	48.1	VB	73.0	60.0	24.3	11.9
25.0243	40.0	36.6	10.4	50.4	47.0	VB	73.0	60.0	22.6	13.0

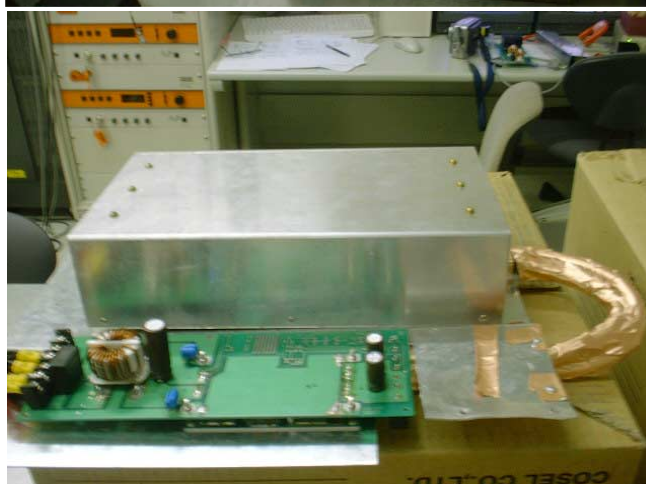
Conditions

Date 2002/3/9

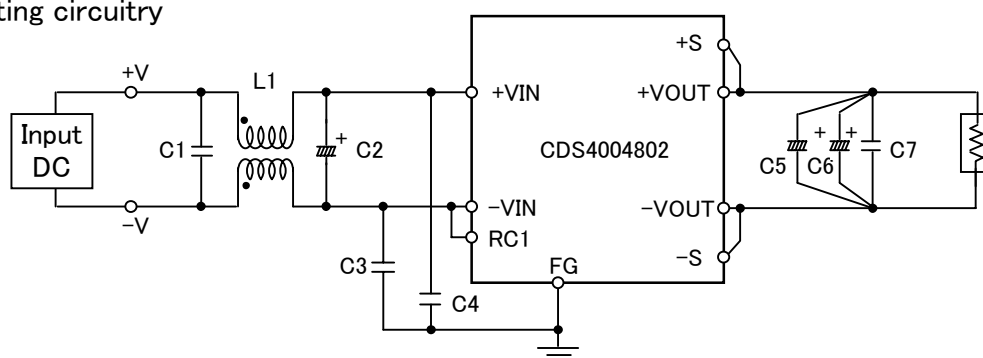
Test : LINE CONDUCTION

Model Name : CDS4004802

○Photographs of Test Set-Up



○Testing circuitry



L1	: 1mH	SC15-10JH (TOKIN)
C1	: 0.68 μ F	CFJC22E684M (NITSUKO)
C2	: 100V 470 μ F	PM series (NICHICON)
C3,C4	: 630V 0.033 μ F	MDS22J333K (NITSUKO)
C5,C6	: 10V 3300 μ F	PW series (NICHICON)
C7	: 50V 0.1 μ F	MDD21H104M (NITSUKO)

Fig. Testing circuitry