



RADIATED EMISSION

Model Name : CBS504828

Model No. :

Serial No. :

Points : 3

Detector : PEAK/QP

Polarization : Hori. & Vert.

Tested by : K.Kinoshita

Temp. : 25degC

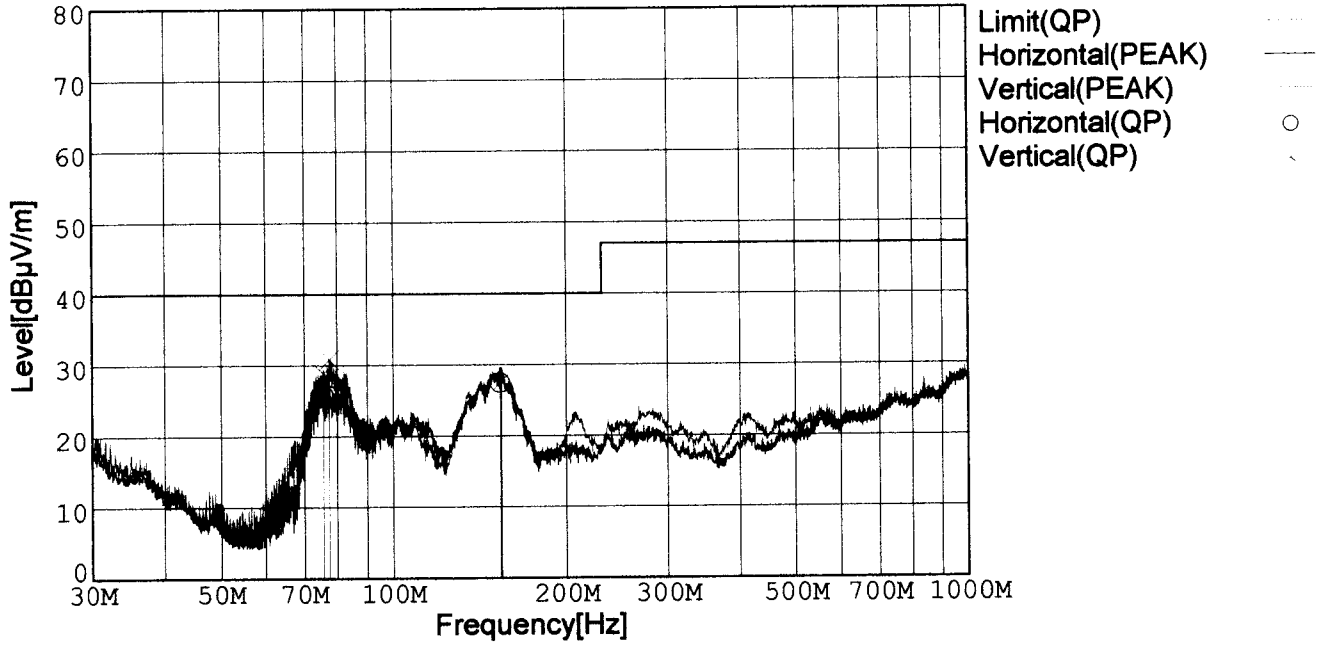
Humi. : 40%

Date : 2001/3/6 16:56

Test Equip. : R3132,ESPC

Comment : DC48V Io=1.8A

Limit: [EN 55022] Class B<3m>



Frequency [MHz]	Meter Reading (QP) [dBμV]	Ant. Type	Antenna Factor [dB/m]	Cable & Preamp [dB]	Level (QP) [dBμV/m]	Angle[°]	Height [cm]	Polar.	Limit [dBμV/m]	Margin [dB]
75.684	51.0	BL	6.5	-31.7	25.8	282	157	Hori.	40.0	14.2
77.506	50.7	BL	6.7	-31.7	25.7	258	154	Hori.	40.0	14.3
153.770	48.5	BL	10.3	-31.4	27.4	286	151	Hori.	40.0	12.6
75.665	54.0	BL	6.5	-31.7	28.8	191	145	Vert.	40.0	11.2
77.485	55.8	BL	6.7	-31.7	30.8	188	132	Vert.	40.0	9.2
154.710	48.8	BL	10.3	-31.4	27.7	345	156	Vert.	40.0	12.3

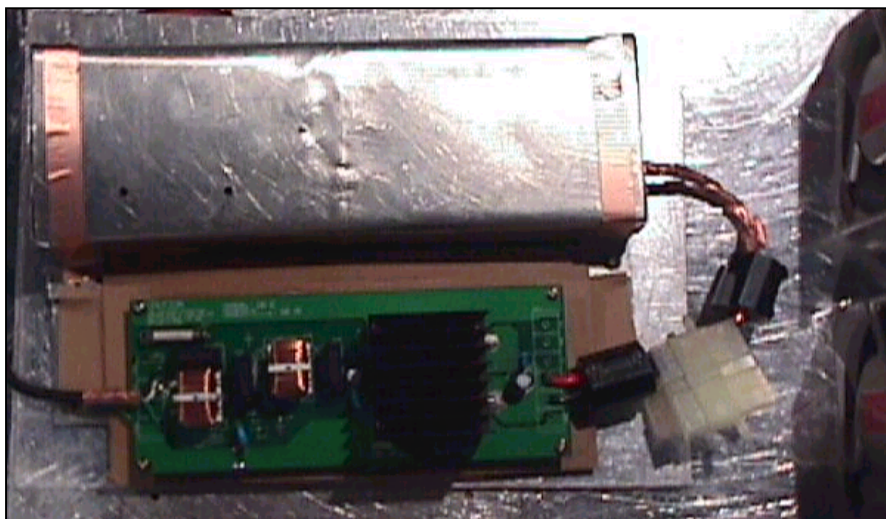
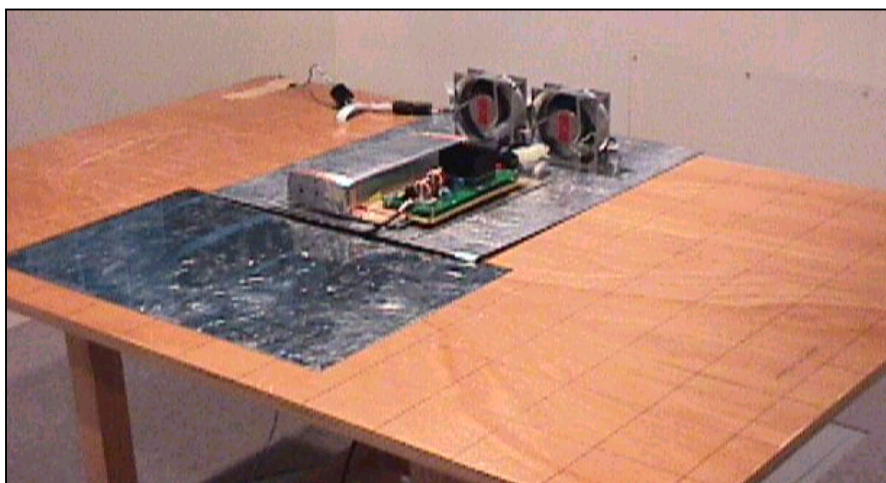
BL: Biconi-Log

Conditions

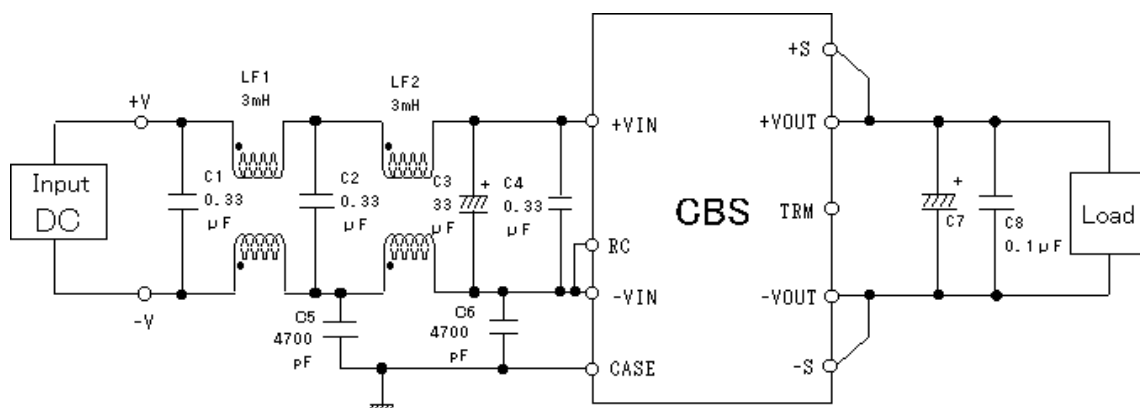
Date 2001/3/7

Test : RADIATED EMISSION
 Model Name : CBS5048

○Photographs of Test Set-Up



○Testing circuitry



L1, L2 : SC-05-30J (TOKIN)
 C1, C2, C4 : CFJC22E334M (Nitsuko)
 C3 : 100V 33 μF PMseries (nichicon)
 C5, C6 : DE1307-640E472M-KH (MURATA)
 C7 : CBS504803,05 10V 2200 μF LXZseries (NIPPON CHEMI-CON)
 CBS504812,15 25V 470 μF LXZseries (NIPPON CHEMI-CON)
 CBS504824,28 35V 220 μF LXZseries (NIPPON CHEMI-CON)
 C8 : MDD21H104M (Nitsuko)

Fig. Testing circuitry



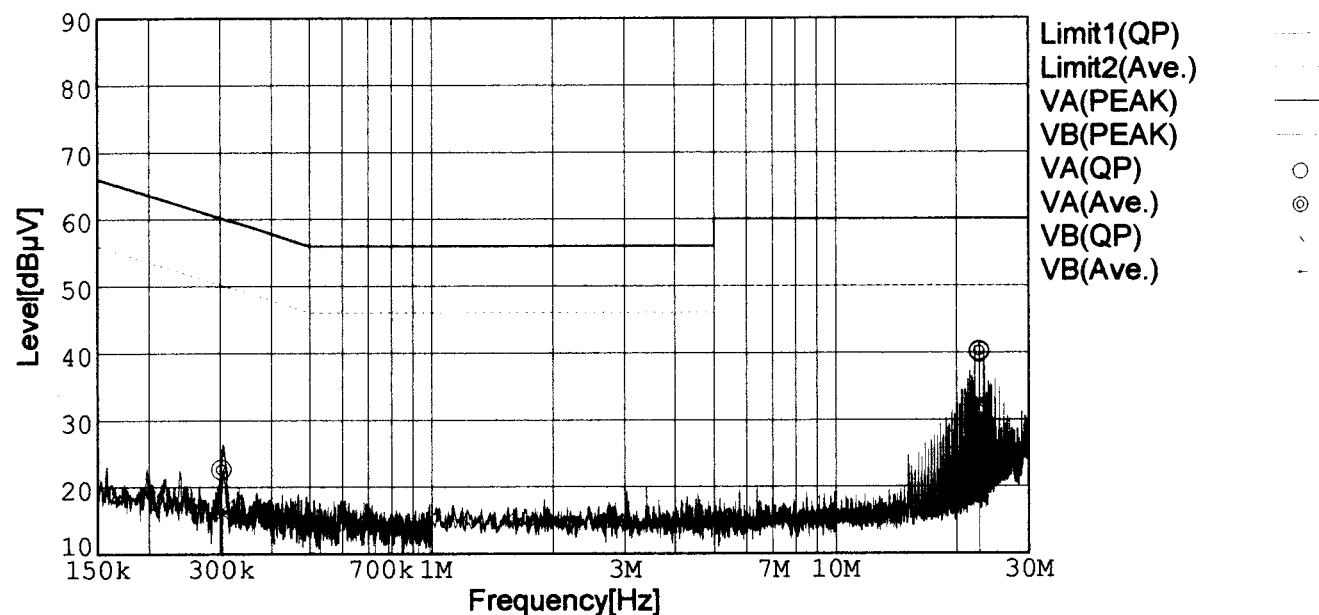
LINE CONDUCTION

Model Name : CBS504828
 Model No. :
 Serial No. :
 Points : 2
 Detector : PEAK/QP/Ave.
 Line Mode : VA/VB

Tested by : K.Kinoshita
 Temp. : 25degC
 Humi. : 40%
 Date : 2001/3/6 16:25
 Test Equip. : R3132,ESPC
 Comment : DC48V Io=1.8A

Limit1: [EN 55022] Class B(QP)

Limit2: [EN 55022] Class B(Ave.)



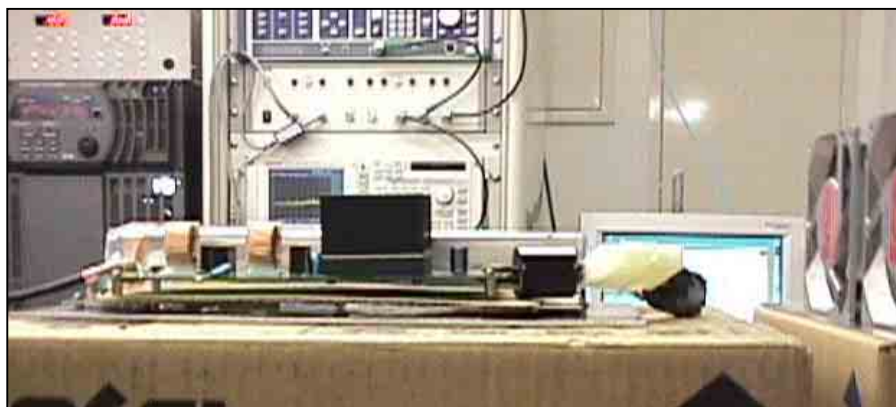
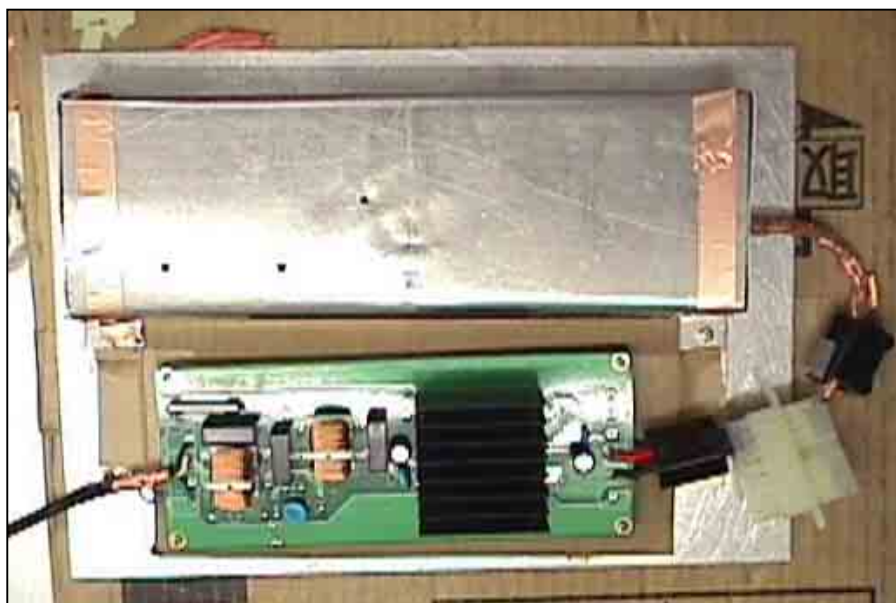
Frequency [MHz]	Meter Reading (QP) [dBμV]	Meter Reading (Ave.) [dBμV]	Factor [dB]	Level (QP) [dBμV]	Level (Ave.) [dBμV]	Line	Limit (QP) [dBμV]	Limit (Ave.) [dBμV]	Margin (QP)[dB]	Margin (Ave.) [dB]
0.3020	12.9	12.8	9.8	22.7	22.6	VA	60.2	50.2	37.5	27.6
22.7486	29.7	29.9	10.3	40.0	40.2	VA	60.0	50.0	20.0	9.8
0.3043	6.9	6.3	9.8	16.7	16.1	VB	60.1	50.1	43.4	34.0
22.7487	22.0	22.5	10.3	32.3	32.8	VB	60.0	50.0	27.7	17.2

Conditions

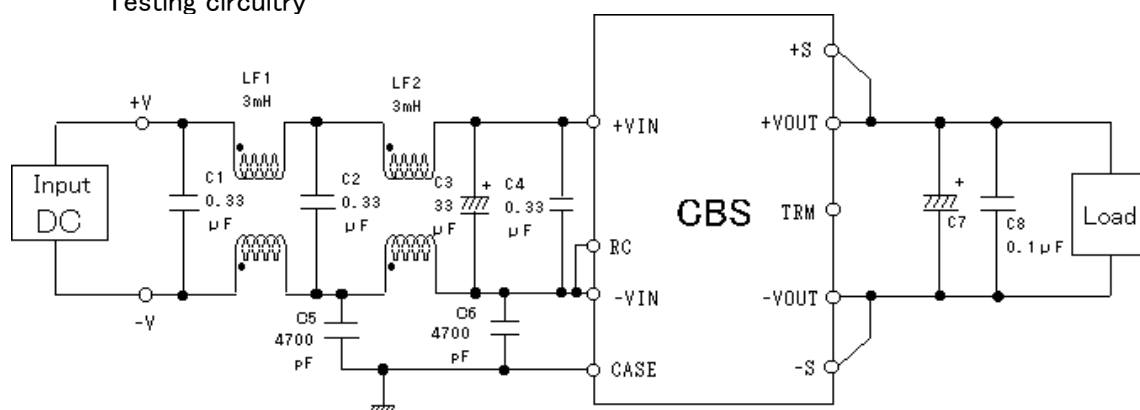
Date 2001/3/7

Test : LINE CONDUCTION
Model Name : CBS5048

Photographs of Test Set-Up



Testing circuitry



L1, L2 : SC-05-30J (TOKIN)
C1, C2, C4 : CFJC22E334M (Nitsuko)
C3 : 100V 33 μF PMseries (nichicon)
C5, C6 : DE1307-640E472M-KH (MURATA)
C7 : CBS504803,05 10V 2200 μF LXZseries (NIPPON CHEMI-CON)
CBS504812,15 25V 470 μF LXZseries (NIPPON CHEMI-CON)
CBS504824,28 35V 220 μF LXZseries (NIPPON CHEMI-CON)
C8 : MDD21H104M (Nitsuko)

Fig. Testing circuitry