



# RADIATED EMISSION

Model Name : CBS504812

Model No. :

Serial No. :

Points : 3

Detector : PEAK/QP

Polarization : Hori. & Vert.

Limit: [EN 55022] Class B<3m>

Tested by : K.Kinoshita

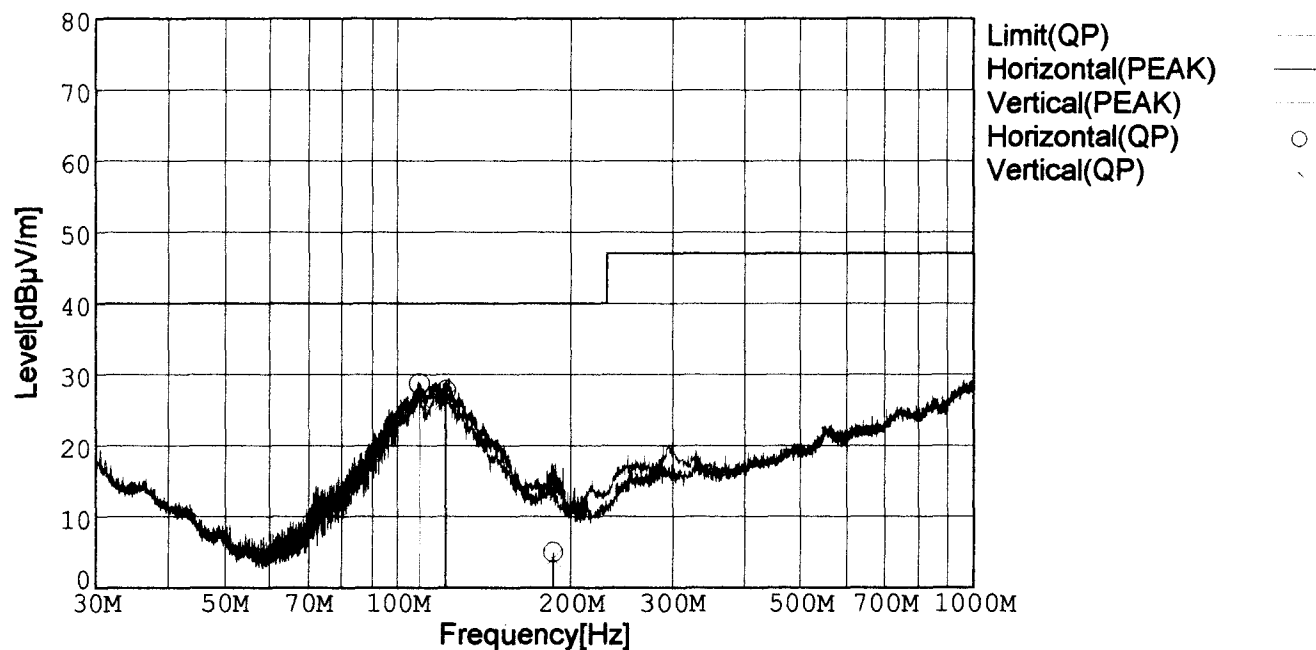
Temp. : 25degC

Humi. : 40%

Date : 2001/2/27 20:47

Test Equip. : R3132,ESPC

Comment : DC48V Io=4.2A



Frequency [MHz]	Meter Reading (QP) [dBμV]	Ant. Type	Antenna Factor [dB/m]	Cable & Preamp [dB]	Level (QP) [dBμV/m]	Angle[°]	Height [cm]	Polar.	Limit [dBμV/m]	Margin [dB]
109.330	49.6	BL	10.6	-31.5	28.7	104	160	Hori.	40.0	11.3
121.267	48.2	BL	11.0	-31.5	27.7	91	159	Hori.	40.0	12.3
186.741	27.9	BL	8.3	-31.2	5.0	0	138	Hori.	40.0	35.0
109.355	47.6	BL	10.6	-31.5	26.7	358	145	Vert.	40.0	13.3
120.628	46.9	BL	11.0	-31.5	26.4	348	150	Vert.	40.0	13.6
186.339	27.0	BL	8.3	-31.2	4.1	180	102	Vert.	40.0	35.9

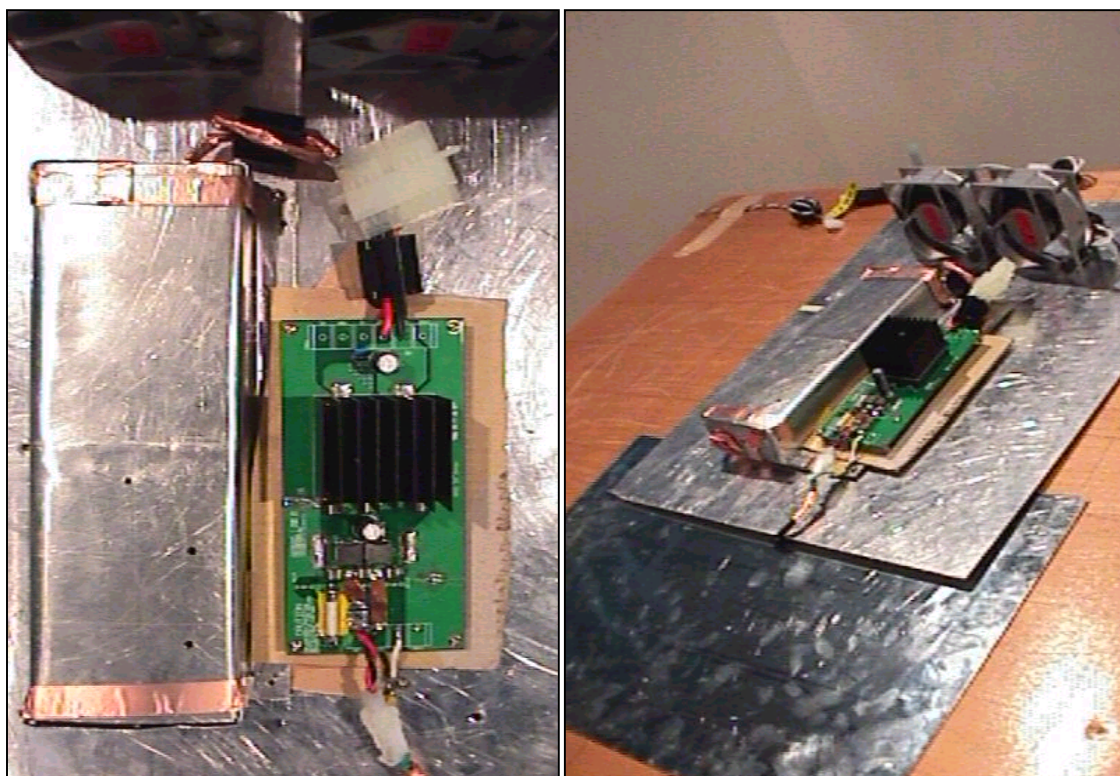
BL: Biconi-Log

## Conditions

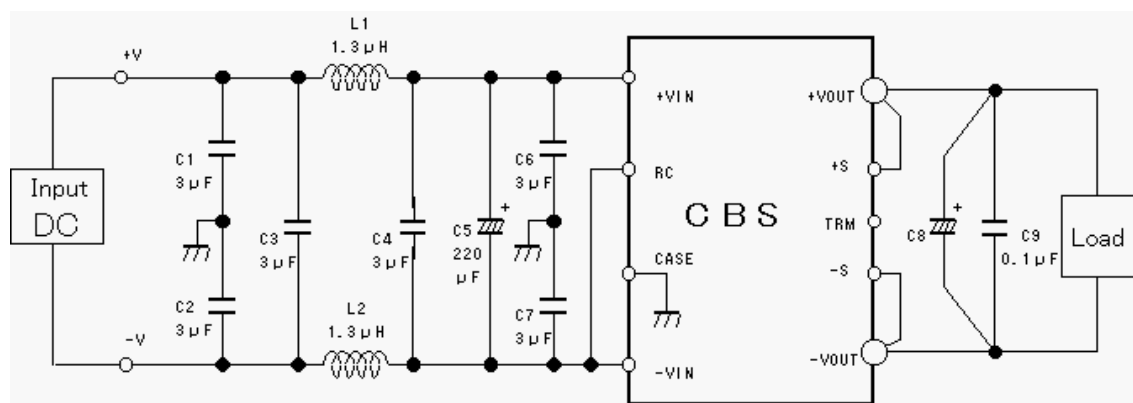
Date 2001/3/7

Test : RADIATED EMISSION  
 Model Name : CBS5048

## ○Photographs of Test Set-Up



## ○Testing circuitry



L1, L2 : ETQP6F1R3LFA (MATSUSHITA)  
 C1, C2, C3, C4, C6, C7 : CY55Y5P2A305M(TOKIN)  
 C5 : 80V 220 $\mu$ F PFseries (nichicon)  
 C8 : CBS504805 10V 2200 $\mu$ F LXZseries (NIPPON CHEMI-CON)  
       CBS504812 25V 470 $\mu$ F LXZseries (NIPPON CHEMI-CON)  
       CBS504828 35V 220 $\mu$ F LXZseries (NIPPON CHEMI-CON)  
 C9 : MDD21H104M (Nitsuko)

Fig. Testing circuitry



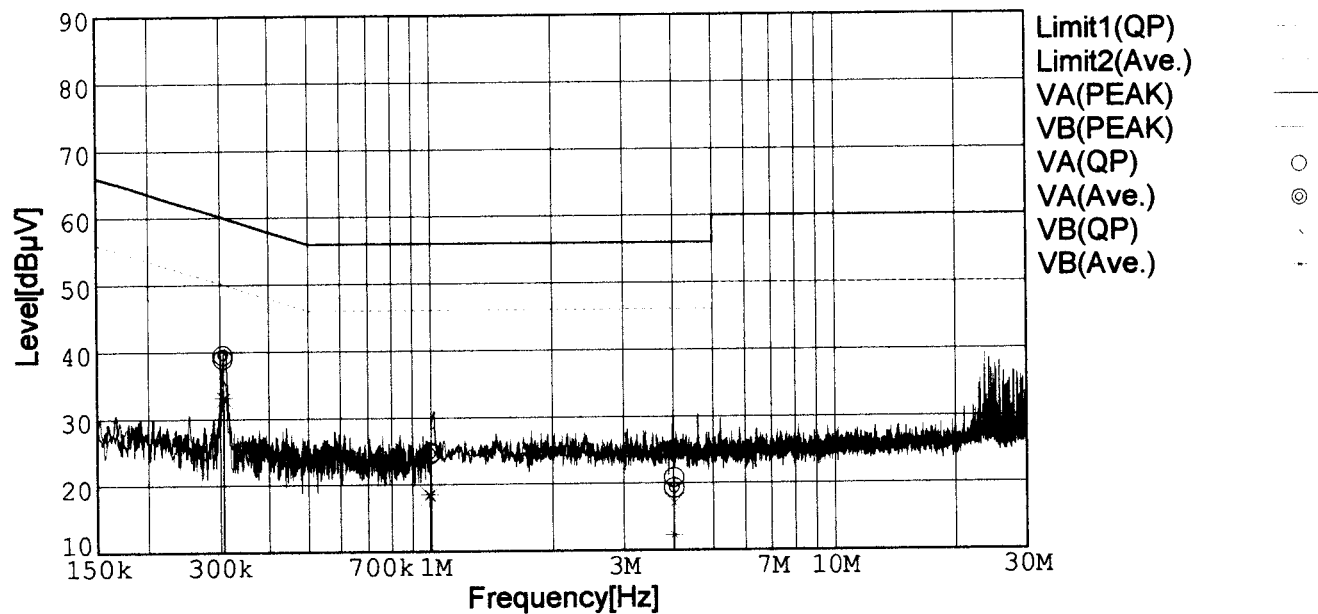
# LINE CONDUCTION

Model Name : CBS504812  
 Model No. :  
 Serial No. :  
 Points : 3  
 Detector : PEAK/QP/Ave.  
 Line Mode : VA/VB

Tested by : K.Kinoshita  
 Temp. : 25degC  
 Humi. : 40%  
 Date : 2001/2/27 21:35  
 Test Equip. : R3132,ESPC  
 Comment : DC48V Io=4.2A

Limit1: [EN 55022] Class B(QP)

Limit2: [EN 55022] Class B(Ave.)



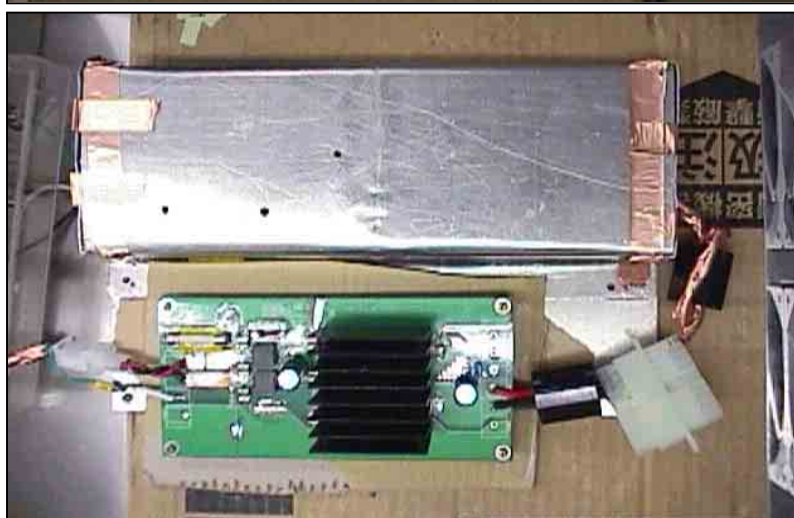
Frequency [MHz]	Meter Reading (QP) [dBμV]	Meter Reading (Ave.) [dBμV]	Factor [dB]	Level (QP) [dBμV]	Level (Ave.) [dBμV]	Line	Limit (QP) [dBμV]	Limit (Ave.) [dBμV]	Margin (QP)[dB]	Margin (Ave.) [dB]
0.3052	29.1	29.7	9.8	38.9	39.5	VA	60.1	50.1	21.2	10.6
0.9985	14.8	14.7	9.9	24.7	24.6	VA	56.0	46.0	31.3	21.4
4.0102	10.8	9.3	10.0	20.8	19.3	VA	56.0	46.0	35.2	26.7
0.3067	23.1	23.3	9.8	32.9	33.1	VB	60.1	50.1	27.2	17.0
0.9919	8.4	8.6	9.9	18.3	18.5	VB	56.0	46.0	37.7	27.5
4.0055	7.0	2.2	10.0	17.0	12.2	VB	56.0	46.0	39.0	33.8

## Conditions

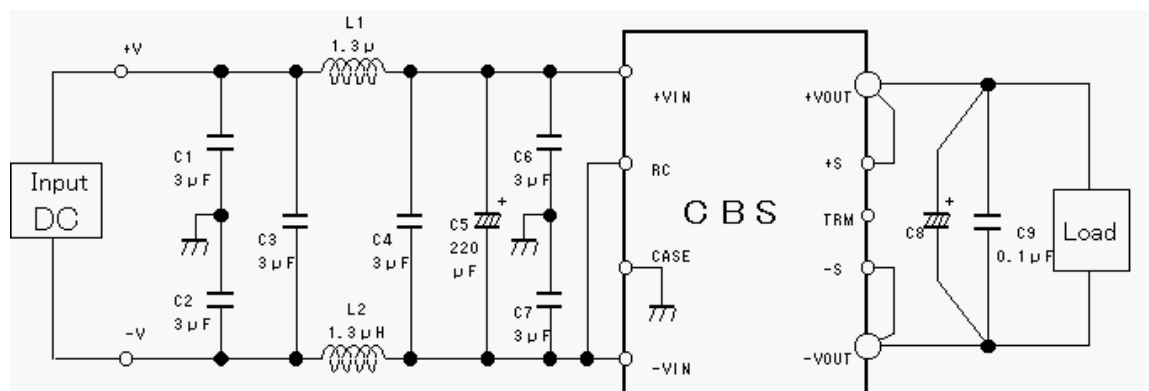
Date 2001/3/7

Test : LINE CONDUCTION  
 Model Name : CBS5048

## Photographs of Test Set-Up



## Testing circuitry



L1, L2 : ETQP6F1R3LFA (MATSUSHITA)  
 C1, C2, C3, C4, C6, C7 : CY55Y5P2A305M(TOKIN)  
 C5 : 80V 220  $\mu$ F PFseries (nichicon)  
 C8 : CBS504805 10V 2200  $\mu$ F LXZseries (NIPPON CHEMI-CON)  
       CBS504812 25V 470  $\mu$ F LXZseries (NIPPON CHEMI-CON)  
       CBS504828 35V 220  $\mu$ F LXZseries (NIPPON CHEMI-CON)  
 C9 : MDD21H104M (Nitsuko)

Fig. Testing circuitry